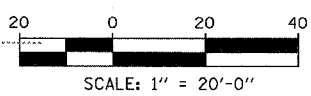
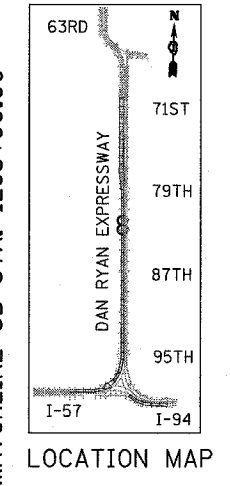
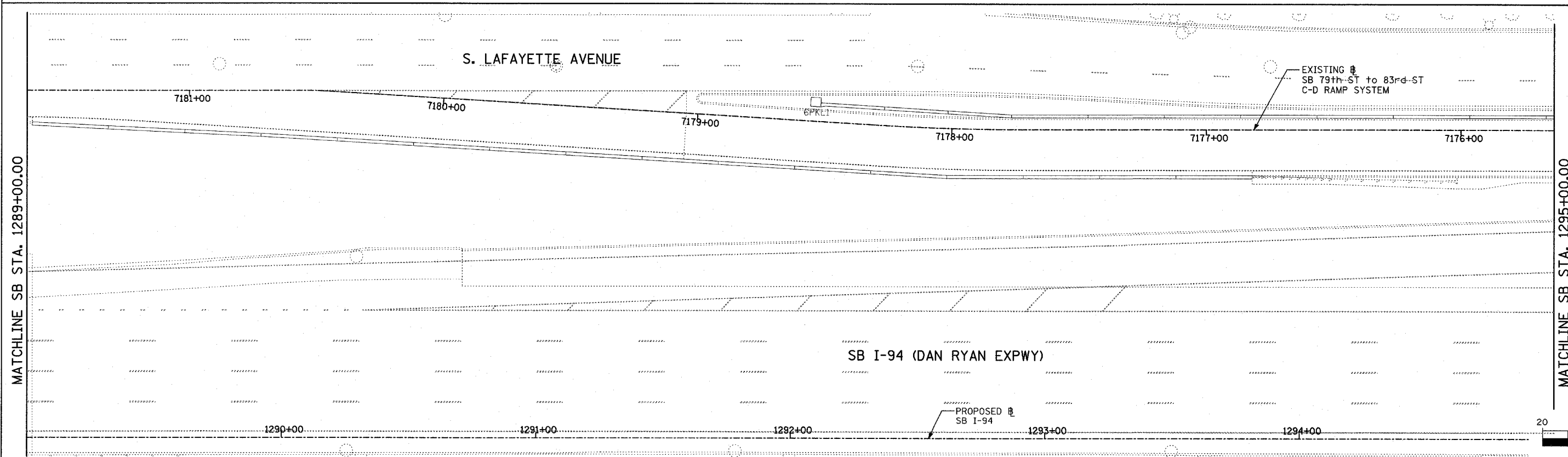
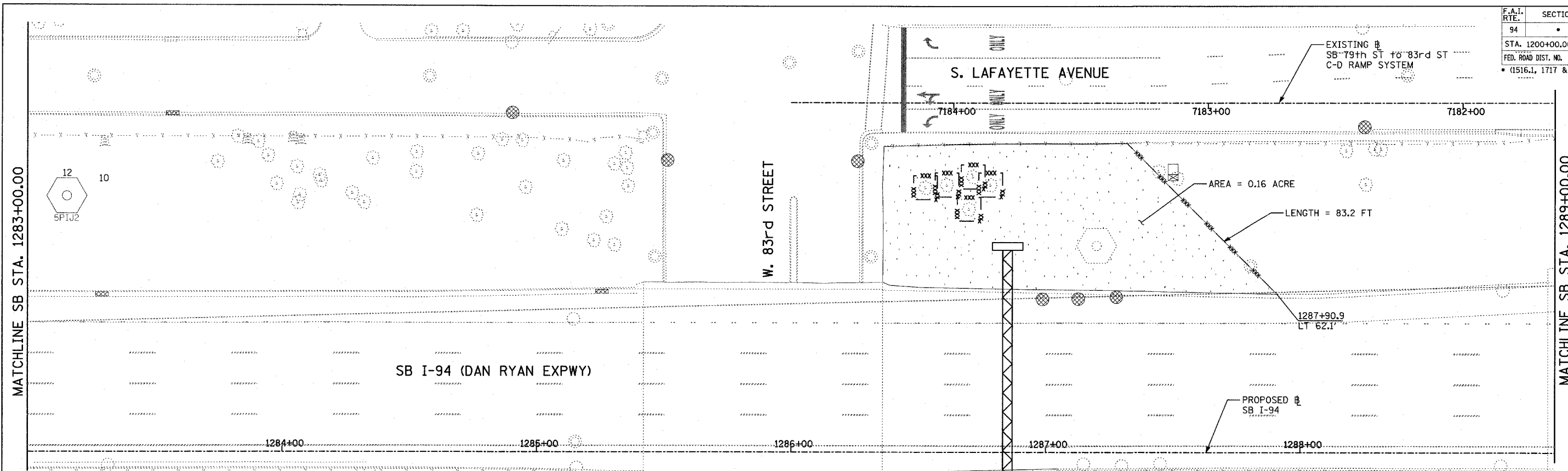


F.A.I. RTE.	SECTION	COUNTY	TOTAL SHEETS	SHEET NO.
94		COOK	907	191
STA. 1200+00.00 TO STA. 1365+00				
FED. ROAD DIST. NO.	ILLINOIS	FED. AID PROJECT		
• (1516.1, 1717 & 1818) R-9		62695		



TYLIN INTERNATIONAL

- LEGEND:**
- TEMPORARY EROSION CONTROL SEEDING
 - PERIMETER EROSION BARRIER
 - INLET FILTER, TO BE INSTALLED IN OFF PROJECT DRAINAGE STRUCTURES
 - TEMPORARY FENCE
 - TEMPORARY DITCH
 - TEMPORARY DITCH CHECK
 - TEMPORARY FENCE FOR TREE PROTECTION (15 FEET PER SIDE = 60 FEET TOTAL)

REVISIONS	
NAME	DATE

ILLINOIS DEPARTMENT OF TRANSPORTATION
 F.A.I. 94 (DAN RYAN EXPRESSWAY)
 EROSION CONTROL PLAN
 SB 79th TO 83rd C-D RAMP SYSTEM
 SB I-94 STA. 1283+00.00 TO 1295+00.00
 SHEET 15 OF 27

SCALE: 1"=20'
 DATE: MARCH 25, 2005

DRAWN BY: JPA, AH
 CHECKED BY: JPM, MAG

05/20/2005 04:09:59 PM