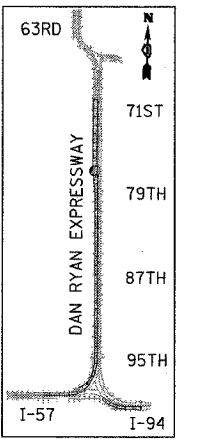
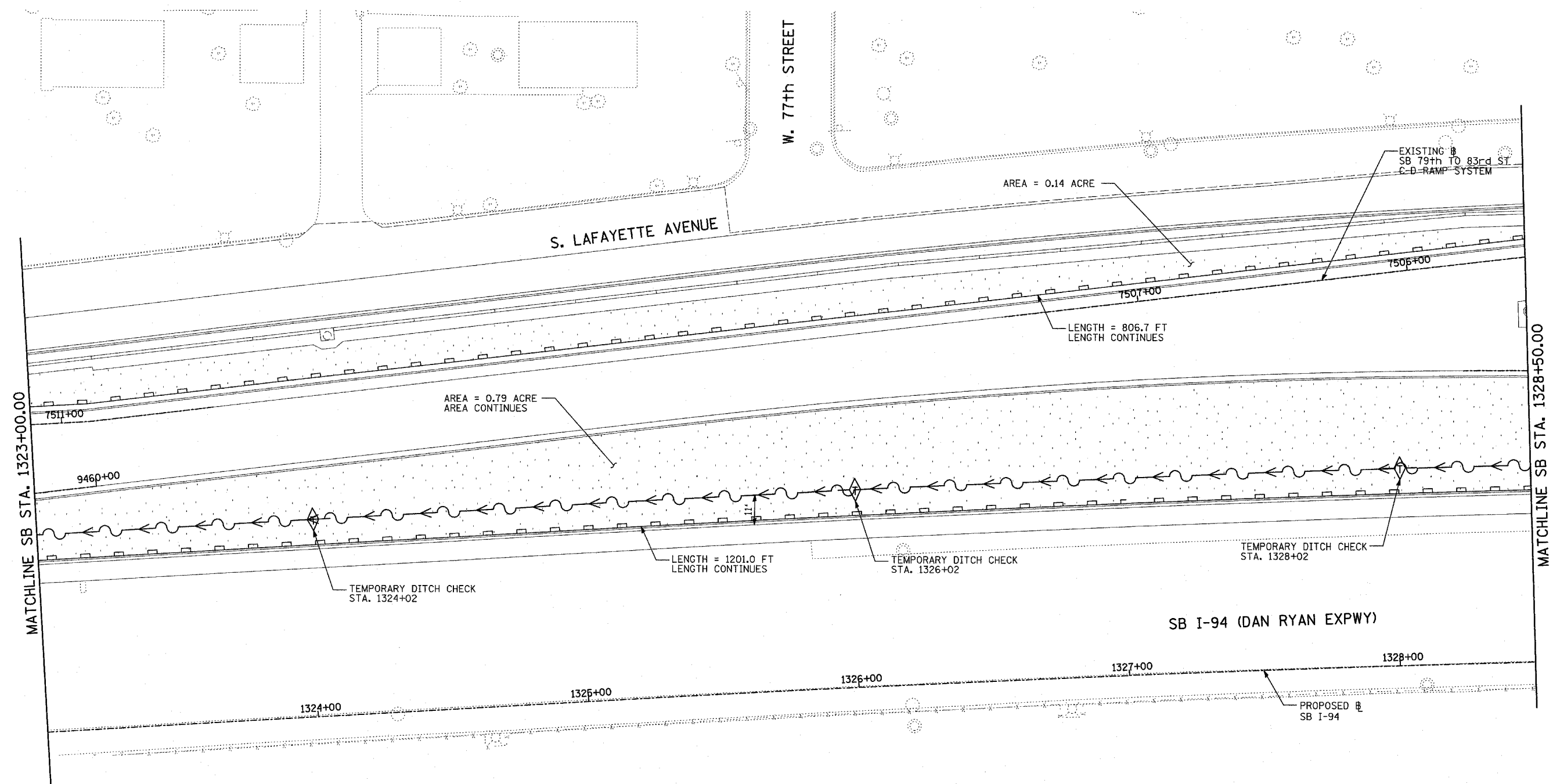
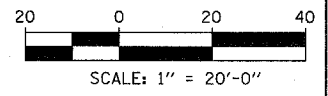


F.A.I. RTE.	SECTION	COUNTY	TOTAL SHEETS	SHEET NO.
94	*	COOK	907	195
STA. 1200+00.00		TO STA. 1365+00		
FED. ROAD DIST. NO.	ILLINOIS	FED. AID PROJECT		
(1516.1, 1717 & 1818) R-9		62695		



LOCATION MAP



LEGEND:

- TEMPORARY EROSION CONTROL SEEDING
- PERIMETER EROSION BARRIER
- INLET FILTER, TO BE INSTALLED IN OFF PROJECT DRAINAGE STRUCTURES ACCEPTING STORMWATER RUNOFF
- TEMPORARY FENCE
- TEMPORARY DITCH
- TEMPORARY DITCH CHECK
- TEMPORARY FENCE FOR TREE PROTECTION (15 FEET PER SIDE = 60 FEET TOTAL)

REVISIONS	
NAME	DATE

ILLINOIS DEPARTMENT OF TRANSPORTATION
 F.A.I. 94 (DAN RYAN EXPRESSWAY)
 EROSION CONTROL PLAN
 SB 76th TO 79th ST C-D RAMP SYSTEM
 SB I-94 STA. 1323+00.00 TO 1328+50.00
 SHEET 19 OF 27

SCALE: 1"=20'
 DATE: MARCH 25, 2005

DRAWN BY: JPA, AH
 CHECKED BY: JPM, MAG

TYLIN INTERNATIONAL

03/30/2005 01:24:08 PM