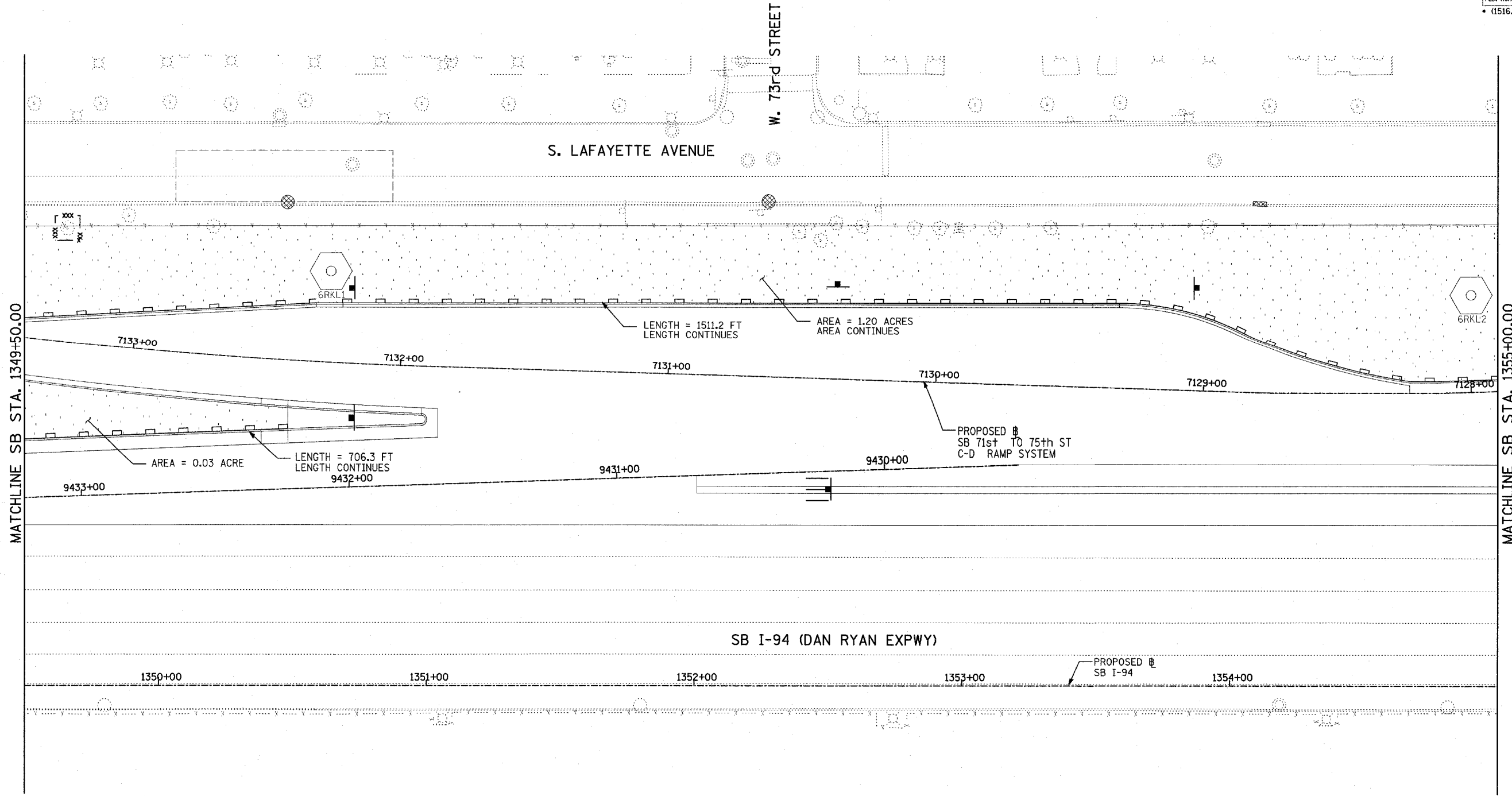
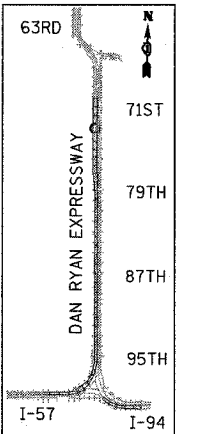


F.A.I. RTE.	SECTION	COUNTY	TOTAL SHEETS	SHEET NO.
94		COOK	907	200
STA. 1200+00.00		TO STA. 1365+00		
FED. ROAD DIST. NO.	ILLINOIS	FED. AID PROJECT		
(1516.1, 1717 & 1818) R-9		62695		

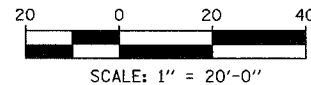


MATCHLINE SB STA. 1349+50.00

MATCHLINE SB STA. 1355+00.00



LOCATION MAP



**LEGEND:**

- TEMPORARY EROSION CONTROL SEEDING
- PERIMETER EROSION BARRIER
- INLET FILTER, TO BE INSTALLED IN OFF PROJECT DRAINAGE STRUCTURES ACCEPTING STORMWATER RUNOFF
- TEMPORARY FENCE
- TEMPORARY DITCH
- TEMPORARY DITCH CHECK
- TEMPORARY FENCE FOR TREE PROTECTION (15 FEET PER SIDE = 60 FEET TOTAL)

REVISIONS	
NAME	DATE

ILLINOIS DEPARTMENT OF TRANSPORTATION  
 F.A.I. 94 (DAN RYAN EXPRESSWAY)  
 EROSION CONTROL PLAN  
 SB 71st TO 75th ST C-D RAMP SYSTEM  
 SB I-94 STA. 1349+50.00 TO 1355+00.00  
 SHEET 24 OF 27

SCALE: 1"=20'  
 DATE: MARCH 25, 2005  
 DRAWN BY: JPA AH  
 CHECKED BY: JPM, MAG