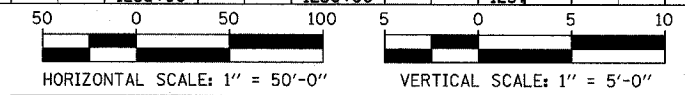
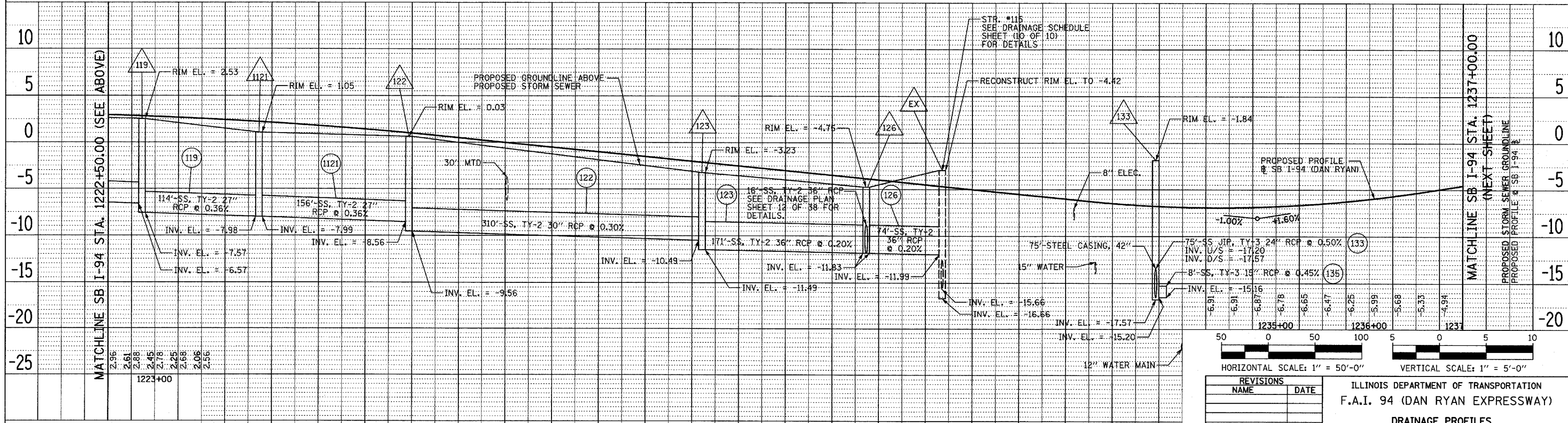
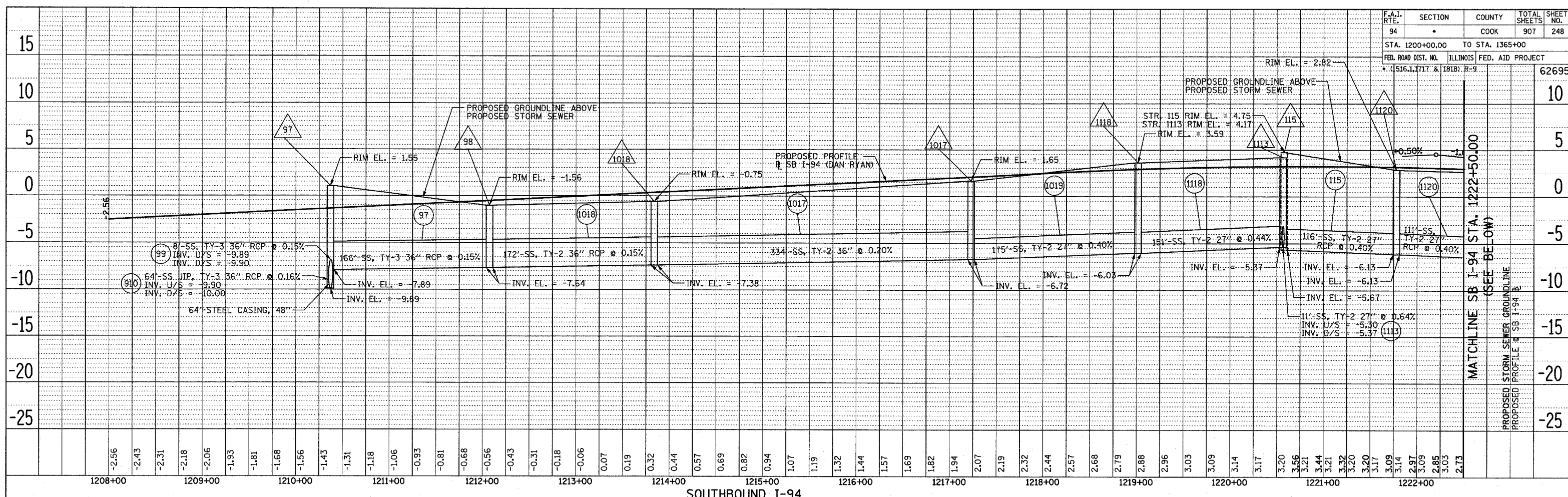


F.A.I. RTE.	SECTION	COUNTY	TOTAL SHEETS	SHEET NO.
94	*	COOK	907	248
STA. 1200+00.00 TO STA. 1365+00				
FED. ROAD DIST. NO. ILLINOIS		FED. AID PROJECT		62695
* (516.1, 1717 & 1818) R-9				



REVISIONS	
NAME	DATE

ILLINOIS DEPARTMENT OF TRANSPORTATION  
F.A.I. 94 (DAN RYAN EXPRESSWAY)  
DRAINAGE PROFILES  
SB I-94  
STA. 1208+00.00 TO 1237+00.00

SCALE: 1" = 50' HORIZ.  
1" = 5' VERT.  
DATE: MARCH 25, 2005

DRAWN BY: NSB  
CHECKED BY: DA