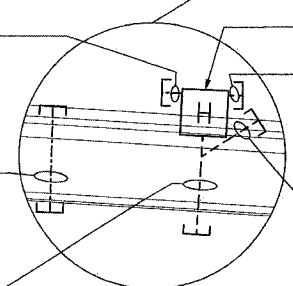
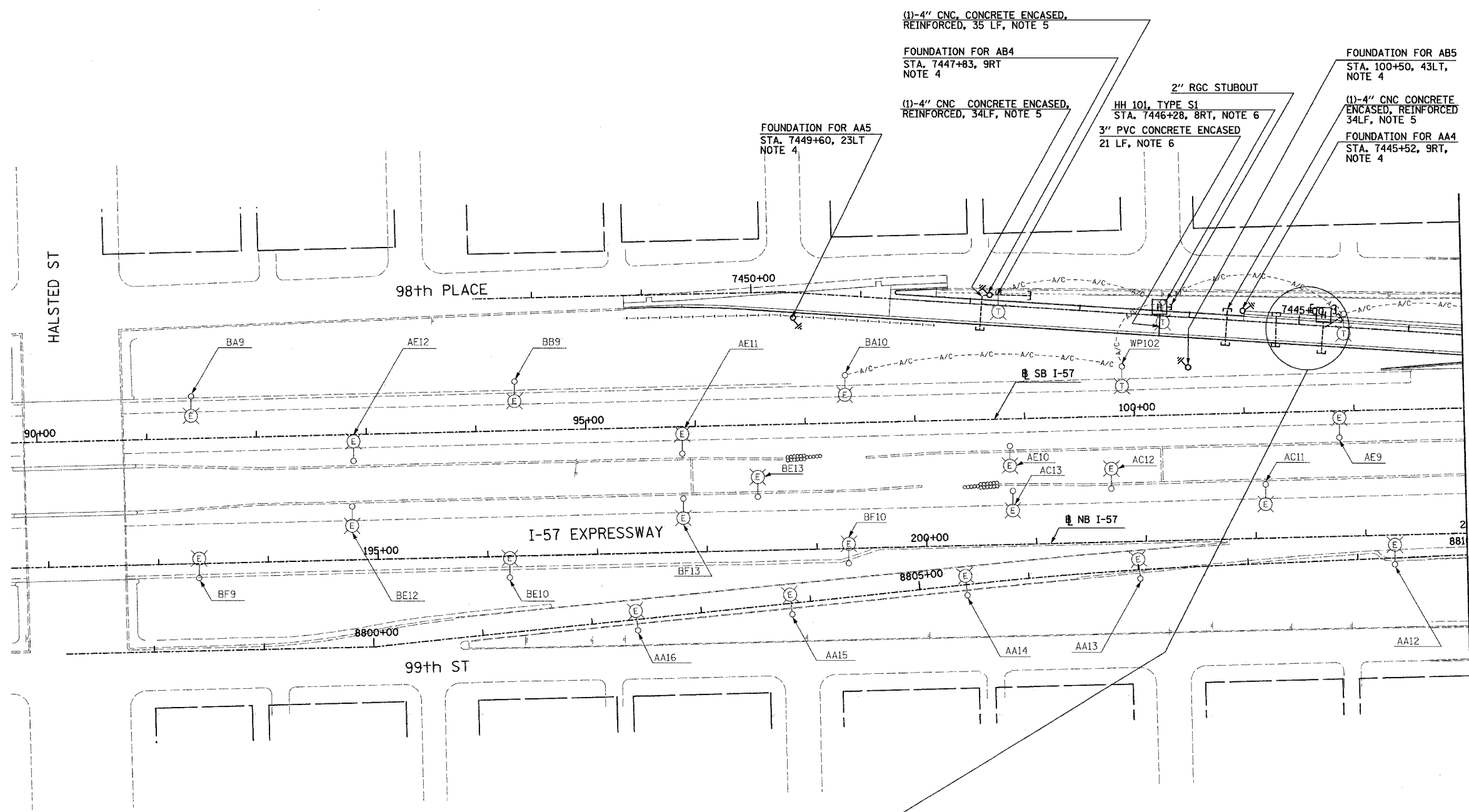


F.A.I. RTE.	SECTION	COUNTY	TOTAL SHEETS	SHEET NO.
94		COOK	907	360
STA. 90+00.00		TO STA. 103+00.00		
FED. ROAD DIST. NO.	ILLINOIS	FED. AID PROJECT		
• (1516, 1, 1717 & 1818) R-9		62695		

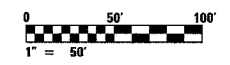
- NOTES:**
- SEE DRAWINGS EI-100 AND EI-101 FOR ELECTRICAL SYMBOLS AND ABBREVIATIONS.
 - COORDINATE ALL WORK WITH IDOT CONTRACTS 62583 AND 62694.
 - UNLESS NOTED OTHERWISE, ALL ITEMS AND WORK SHOWN IN HEAVY LINE WEIGHT ON THIS DRAWING ARE PROPOSED NEW ITEMS AND WORK.
 - PROVIDE FOUNDATIONS FOR CONVENTIONAL LIGHT POLES AS SHOWN ON SHEET E-301. POLES AND WIRING SHALL BE FURNISHED AND INSTALLED BY OTHERS UNDER CONTRACT 62583.
 - REFER SHEET EI-102 AND ME-04 FOR DUCTBANK INSTALLATION DETAILS.
 - REFER TO SHEETS EI-106 AND EI-110 FOR DETAILS.
 - REFER TO SHEETS EI-103, EI-106 AND EI-110 FOR HANDHOLE DETAILS.



MATCHLINE STA. 103+00
SEE SHEET EI-02



- 2" RGC STUBOUT
- HH 102, TYPE S1
STA. 7444+78, 10RT, NOTE 7
- 4" PVC STUBOUT
- (4)-3" RGC, IN TRENCH
34 LF
- (4)-4" CNC CONCRETE ENCASED, REINFORCED,
(2)-4" CNC FOR LIGHTING, 2-4" CNC FOR ITS, 10 LF
- (5)-4" CNC AND (1)-2" CNC,
CONCRETE ENCASED, REINFORCED,
34 LF, NOTE 5



17B/EI-01

REVISIONS	
NAME	DATE
REVISED	5/06/05

ILLINOIS DEPARTMENT OF TRANSPORTATION
F.A.I. 94 (DAN RYAN EXPRESSWAY)

ELECTRICAL INFRASTRUCTURE PLANS
PROPOSED IMPROVEMENTS

SCALE: 1"=50' DRAWN BY: VG
DATE: MARCH 25, 2005 CHECKED BY: TM

SINGH 300 W. ADAMS ST.
CHICAGO, IL 60606
SINGH & ASSOCIATES, INC. TEL: (312) 629-0240
CONSULTING ENGINEERS FAX: (312) 629-8449

5/6/2005 9:46:56 AM