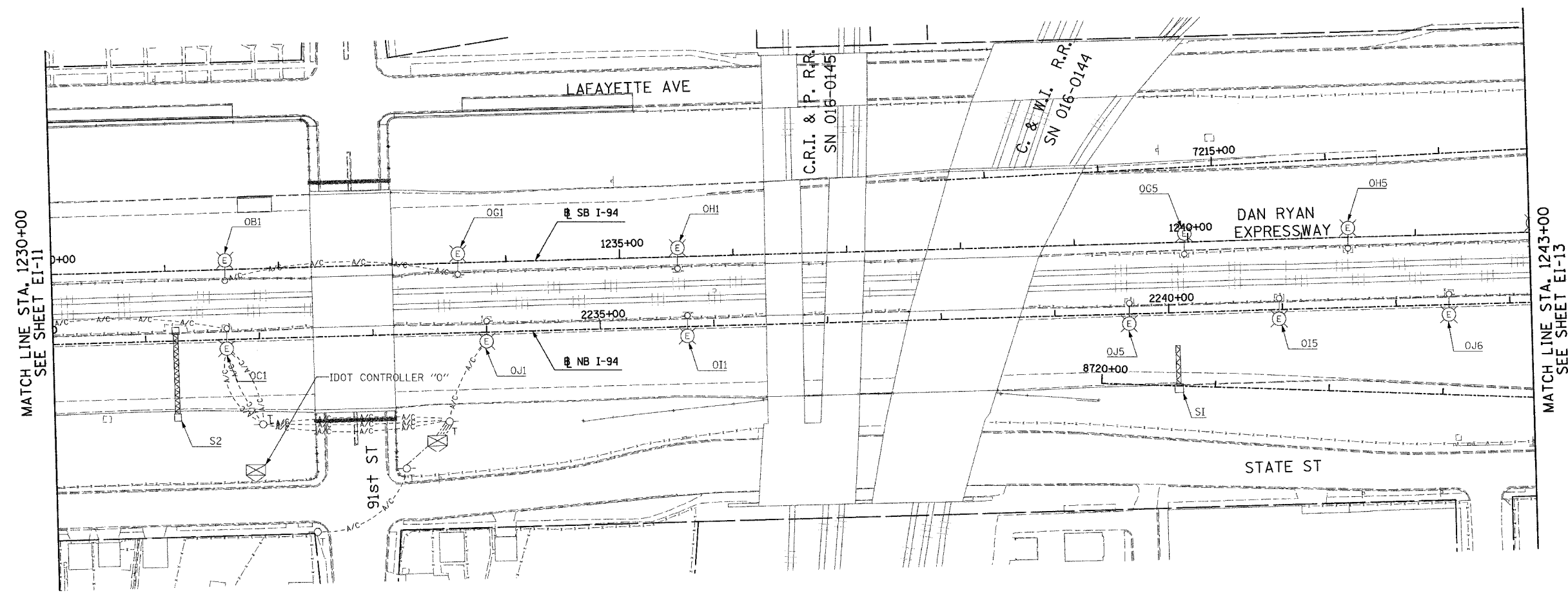
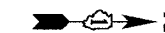


F.A.I. RTE.	SECTION	COUNTY	TOTAL SHEETS	SHEET NO.
94	*	COOK	907	371
STA. 1230+00.00		TO STA. 1243+00.00		
FED. ROAD DIST. NO.	ILLINOIS FED. AID PROJECT			
(1516, 11717 & 1818) R-9		62695		

NOTES:

- SEE DRAWINGS EI-100 AND EI-101 FOR ELECTRICAL SYMBOLS AND ABBREVIATIONS.



MATCH LINE STA. 1230+00
SEE SHEET EI-11

MATCH LINE STA. 1243+00
SEE SHEET EI-13



17B/EI-12

NO ELECTRICAL WORK ON THIS SHEET
FOR REFERENCE ONLY

SINGH 300 W. ADAMS ST.
CHICAGO, IL 60606
SINGH & ASSOCIATES, INC. TEL: (312) 629-0240
CONSULTING ENGINEERS FAX: (312) 629-8449

REVISIONS	
NAME	DATE
REVISED	5/06/05

ILLINOIS DEPARTMENT OF TRANSPORTATION
F.A.I. 94 (DAN RYAN EXPRESSWAY)

ELECTRICAL INFRASTRUCTURE PLANS
PROPOSED IMPROVEMENTS

SCALE: 1"=50' DRAWN BY: VG
DATE: MARCH 25, 2005 CHECKED BY: TM

J:\N75\qgnv\10217532.e\12-01.dwg 5/16/2005 10:30:39 AM