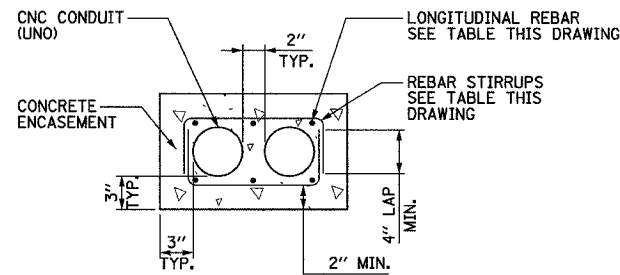
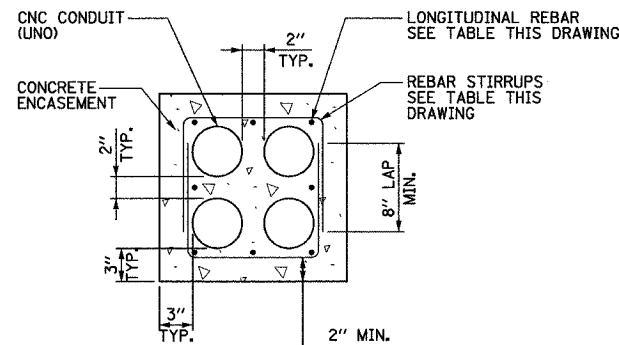


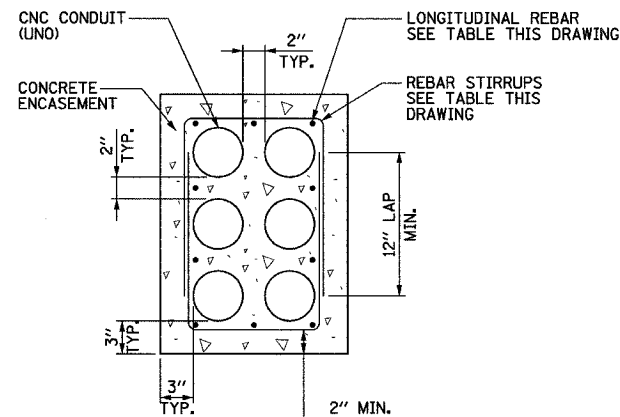
**1x1 DUCTBANK DETAIL-
IN REINFORCED CONCRETE**
NOT TO SCALE



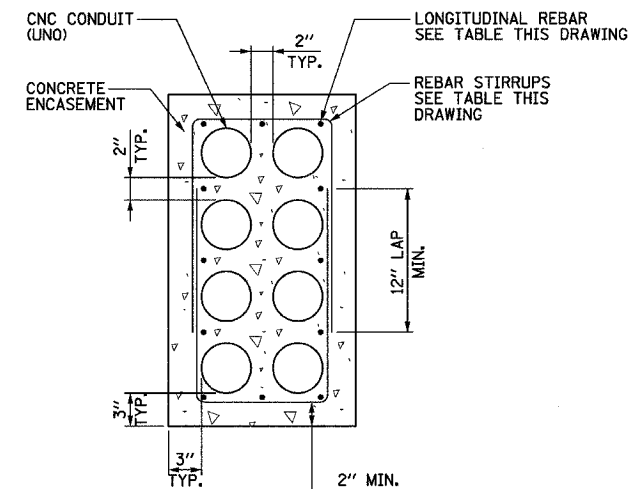
**2x1 DUCTBANK DETAIL-
IN REINFORCED CONCRETE**
NOT TO SCALE



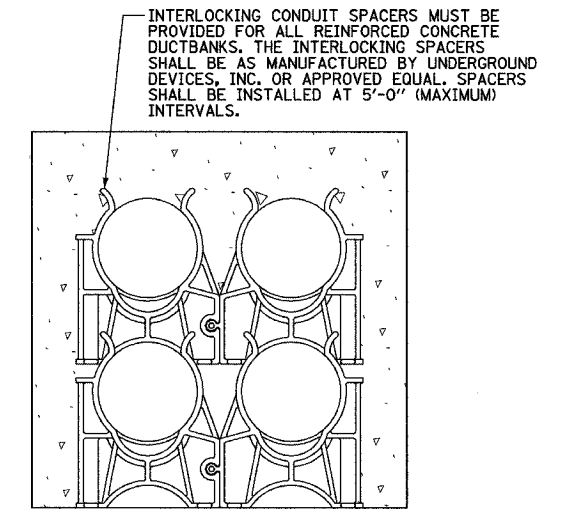
**2x2 DUCTBANK DETAIL-
IN REINFORCED CONCRETE**
NOT TO SCALE



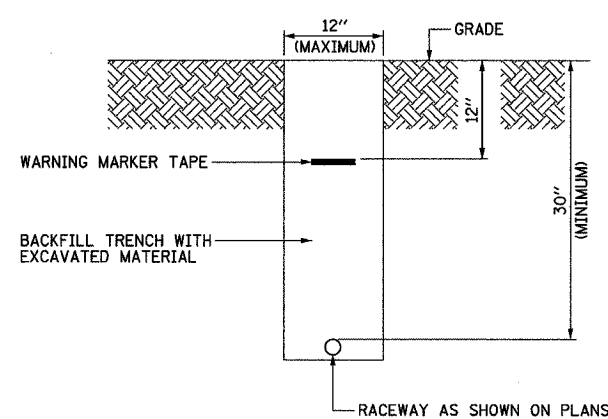
**2x3 DUCTBANK DETAIL-
IN REINFORCED CONCRETE**
NOT TO SCALE



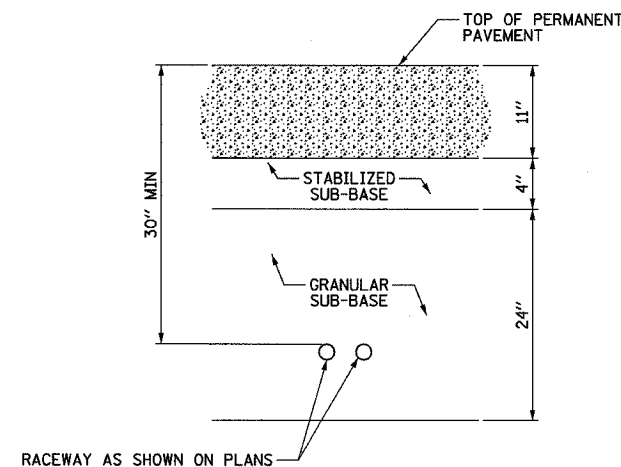
**2x4 DUCTBANK DETAIL-
IN REINFORCED CONCRETE**
NOT TO SCALE



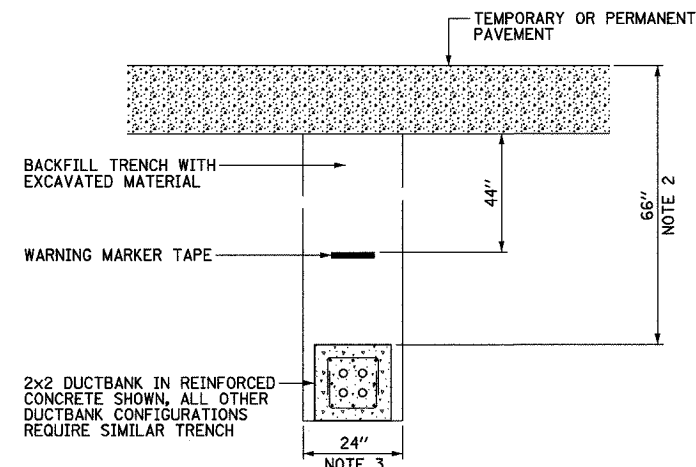
INTERLOCKING CONDUIT SPACER DETAIL
NOT TO SCALE



**TYPICAL ELECTRICAL
CONDUIT IN UNPAVED AREA**
NOT TO SCALE



**TYPICAL SURVEILLANCE
CONDUIT UNDER PERMANENT PAVEMENT**
NOT TO SCALE



**TYPICAL ELECTRICAL
DUCTBANK UNDER PAVEMENT**
NOT TO SCALE

DUCTBANK REINFORCEMENT TABLE		
DUCTBANK CONCRETE CROSS-SECTIONAL AREA SQ. INCHES	LONGITUDINAL REBAR	REBAR STIRRUPS
	BARS	
LESS THAN 450	#4	#3 AT 12" SPACING
451 TO 650	#5	#3 AT 12" SPACING
GREATER THAN 651	#6	#3 AT 12" SPACING

17B/EI-102

ILLINOIS DEPARTMENT OF TRANSPORTATION
F.A.I. 90/94 (DAN RYAN EXPRESSWAY)

REVISIONS	
NAME	DATE

ELECTRICAL DUCTBANK DETAILS

SCALE: NOT TO SCALE DRAWN BY:
DATE: FEB. 25, 2005 CHECKED BY: