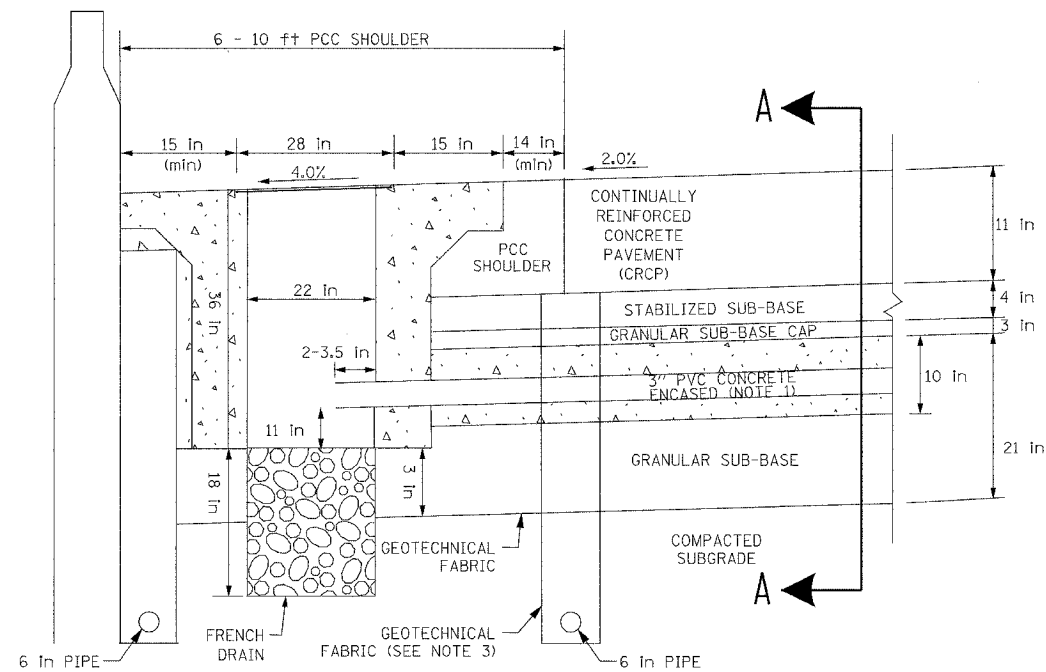
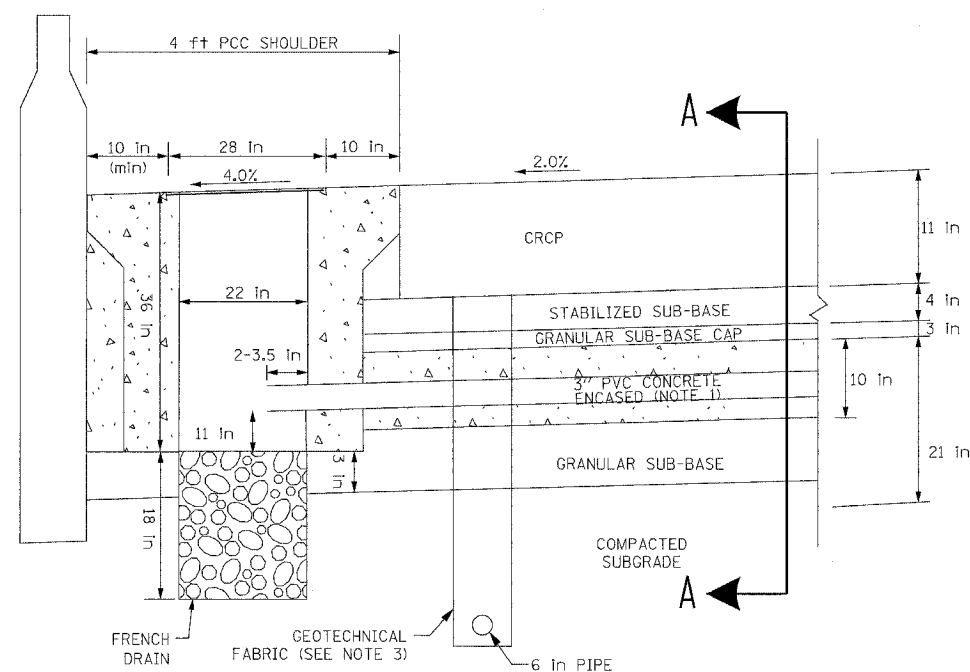


F.A.I. RTE.	SECTION	COUNTY	TOTAL SHEETS	SHEET NO.
94	•	COOK	907	417
FED. ROAD DIST. NO. 1 ILLINOIS FED. AID PROJECT				
• (1516, 1, 1717 & 1818) B-9				

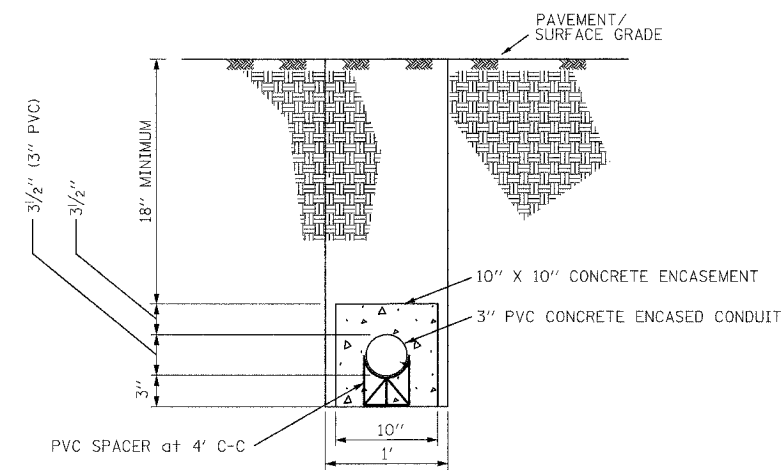
62695



HEAVY DUTY HANDHOLE IN 4' TO 6' RAMP SHOULDER (TYPICAL)



HEAVY DUTY HANDHOLE (SPECIAL) IN 4' RAMP SHOULDER (TYPICAL)



SECTION A-A
TYPICAL 3" PVC CONCRETE ENCASED CONDUIT UNDER PAVEMENT DETAIL
(FOR MICROLOOP INSTALLATION IN PROPOSED RAMP PAVEMENT)

NOTES:

1. 3" PVC CONCRETE ENCASED CONDUIT IS REQUIRED ONLY WHERE SHOWN ON THE PLAN DRAWINGS. WHEN INSTALLED, THE CONDUIT MUST MAINTAIN THE SAME ANGLE AS THE PAVEMENT THROUGHOUT ITS ENTIRE LENGTH.
2. FOR HANDHOLE DETAIL SEE SHEET EI-106.
3. WHEN INSTALLING CONDUIT NEAR OR THROUGH UNDERDRAIN GEOTECHNICAL FABRIC, THE CONTRACTOR SHALL MAINTAIN THE INTEGRITY AND UNIFORMITY OF THE UNDERDRAIN FABRIC THROUGH OVERLAP TO THE SATISFACTION OF THE ENGINEER.

17B/EI-110

REVISIONS	
NAME	DATE

ILLINOIS DEPARTMENT OF TRANSPORTATION
F.A.I. 90/94 (DAN RYAN EXPRESSWAY)

TYPICAL HANDHOLE INSTALLATION
DETAIL - RAMP SHOULDER

SCALE: NTS
DATE: FEB. 25, 2005
DRAWN BY: NB
CHECKED BY: CTC