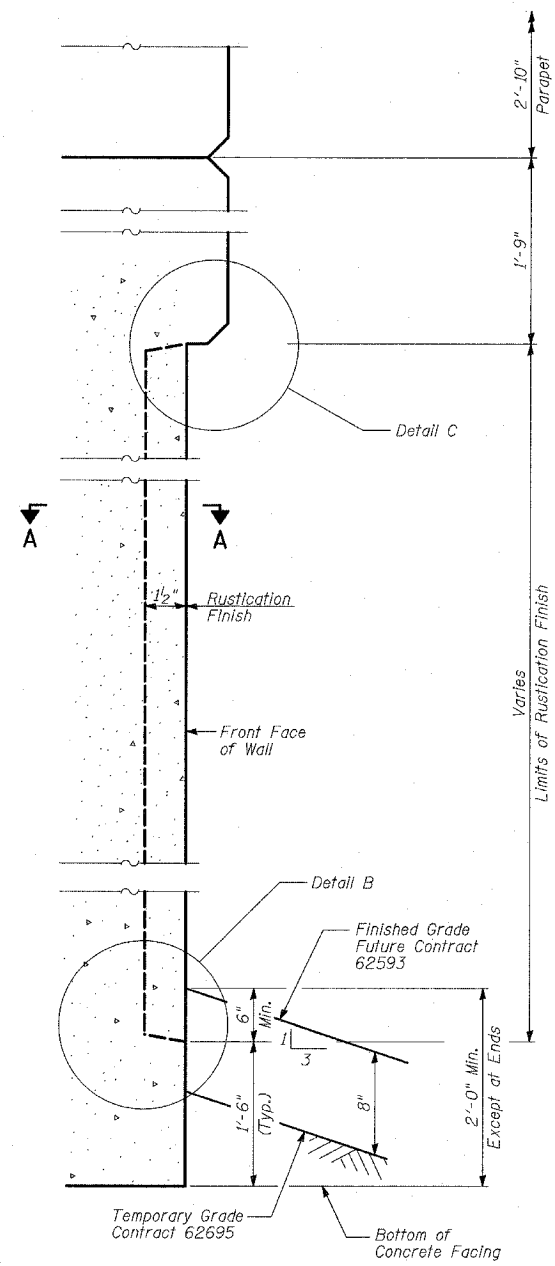
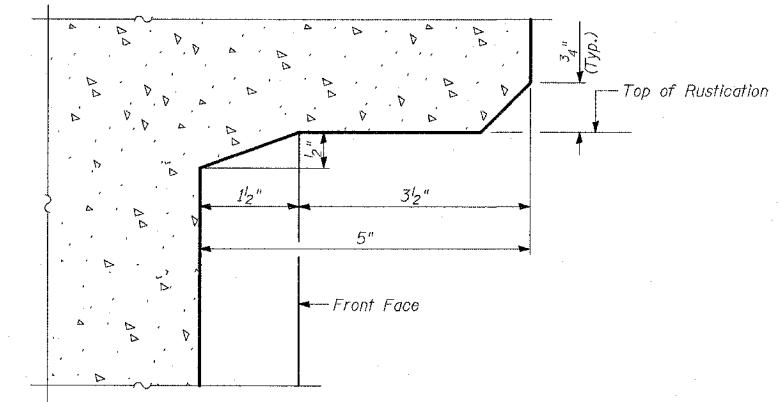


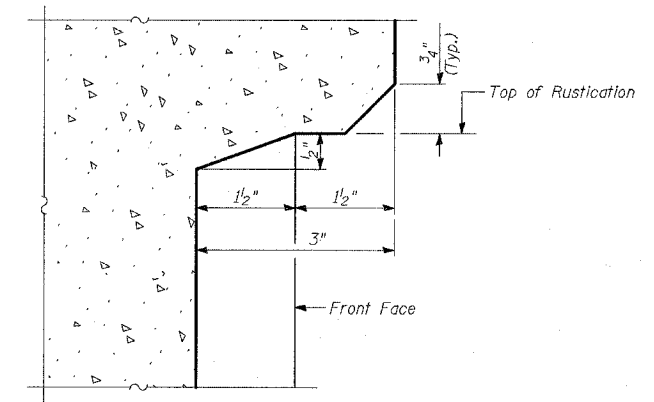
WALL DETAIL AT TYPE F PARAPET



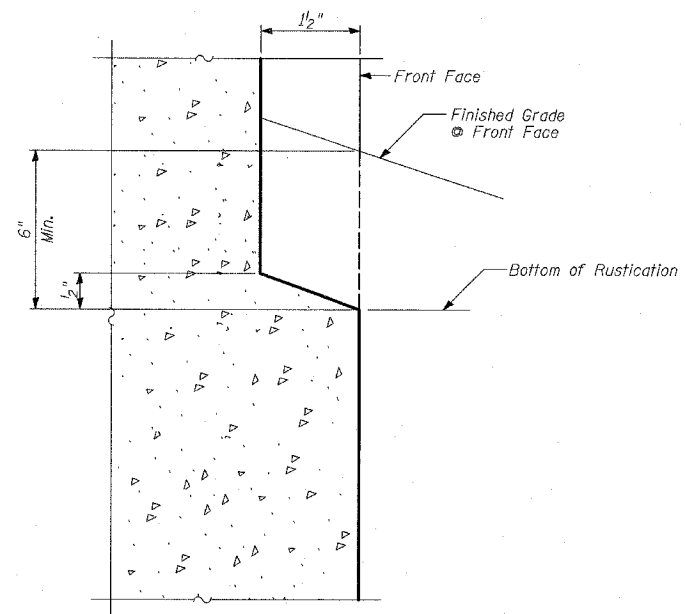
WALL DETAIL AT FLUTED PARAPET



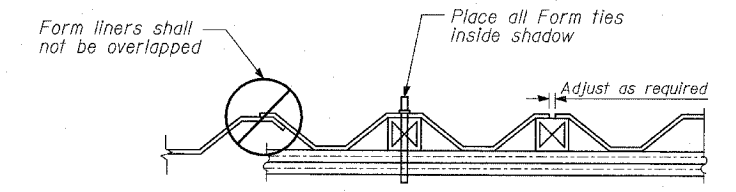
DETAIL A



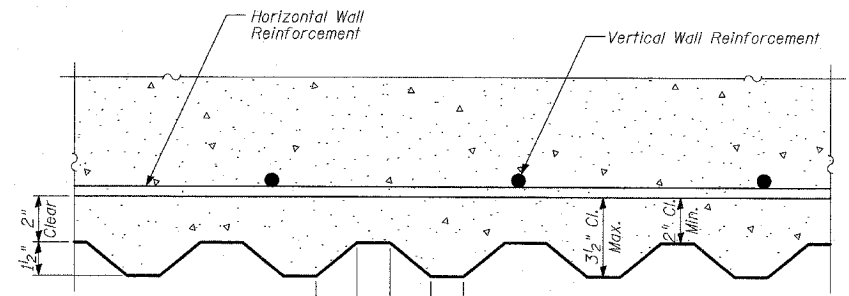
DETAIL C



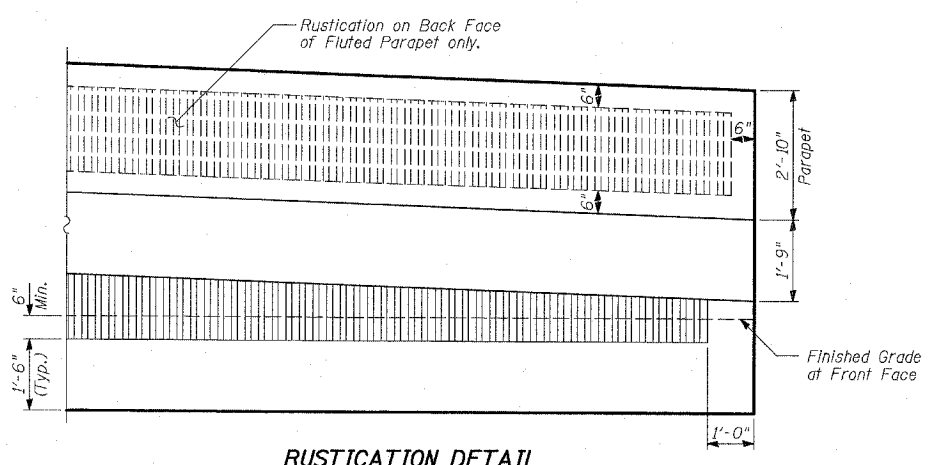
DETAIL B



SUGGESTED FORMWORK DETAIL



SECTION A-A



RUSTICATION DETAIL

NOTES:
 1. See Sheet 11 of 20 for expansion and construction joint details.

BILL OF MATERIAL

ITEM	UNIT	TOTAL
Rustication Finish	SQ FT	4,069

SHEET 12 OF 20

REVISIONS	
NAME	DATE

ILLINOIS DEPARTMENT OF TRANSPORTATION
 F.A.I. 94 (DAN RYAN EXPRESSWAY)
 RETAINING WALL ALONG LAFAYETTE AVE.
 EXIT RAMP TO 95TH ST.
 WALL 34
RUSTICATION DETAILS
 S.N. 016-W946 DESIGNED BY: MI, DJR
 SCALE: N.T.S. DRAWN BY: DJR
 DATE: MARCH 25, 2005 CHECKED BY: TD, MI