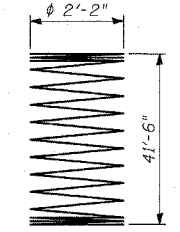


BILL OF MATERIAL

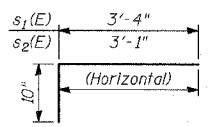
Bar	No.	Size	Length	Shape
s(E)	20	#5	10'-7"	□
s ₁ (E)	40	#5	4'-2"	□
s ₂ (E)	40	#5	3'-11"	□
sp(E)	1	#5	41'-6"	
v ₁₂ (E)	12	#10	41'-6"	—
v ₁₃ (E)	6	#8	12'-10"	L
v ₁₄ (E)	12	#8	12'-3"	L
v ₁₅ (E)	3	#7	11'-2"	□
v ₁₆ (E)	6	#7	10'-8"	□
Reinforcement Bars, Epoxy Coated		POUND	4,120	
Structure Excavation		CU YD	11	
Concrete Structures		CU YD	8	
Protective Coat		SQ YD	13	
Rustication Finish		SQ FT	8	
Drilled Shaft in Soil 36"		FOOT	34	

Reinforcement bars designated (E) shall be epoxy coated.

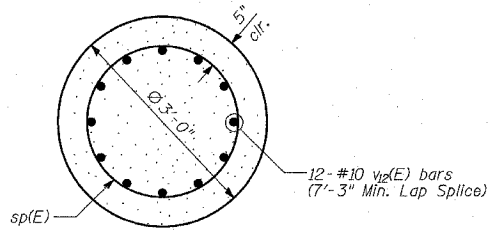
- NOTES:**
- The design loads are based on AASHTO Standard Specifications for Structural Supports for Highway Signs, Luminaires and Traffic Signals-2001.
 - Drilled shafts shall be installed according to IDOT special provisions for "Drilled Shafts".
 - Protective Coat shall be applied to exposed surfaces of the new concrete wall and tower base.
 - At all locations where reinforcement bar laps are not in direct contact, the Contractor shall provide sufficient spacing between the vertical bars, equal to the size of the largest concrete aggregate plus 1/2 inch.
 - For location of drilled shaft, see Sheet 2 of 21.
 - Conduit is not shown for clarity. For location of conduit, see Sheet 8 of 21.
 - Cost of anchor rod assembly, conduit and wires for grounding are included with "Concrete Structures".
 - Minimum lap for spirals = 2'-6"



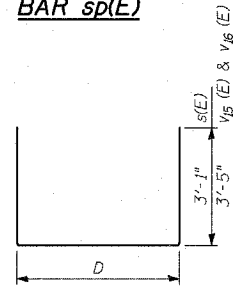
BAR sp(E)



BARS s₁(E) & s₂(E)



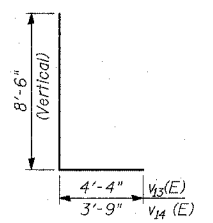
SECTION E-E



BARS s(E), v₁₅(E) & v₁₆(E)

MARK TABLE

Bar	D
s (E)	4'-5"
v ₁₅ (E)	4'-4"
v ₁₆ (E)	3'-10"



BARS v₁₃(E) & v₁₄(E)

TYLIN INTERNATIONAL

REVISIONS

NAME	DATE

ILLINOIS DEPARTMENT OF TRANSPORTATION
F.A.I. 94 (DAN RYAN EXPRESSWAY)
SOUTHBOUND EXIT RAMP RETAINING WALL
AT 79TH ST.
WALL 72
LIGHT TOWER 5PCD4 FOUNDATION DETAILS
 S.N. 016-W971 DESIGNED BY: MI, MAF
 SCALE: N.T.S. DRAWN BY: MAF, DJR
 DATE: MARCH 25, 2005 CHECKED BY: TD, MI