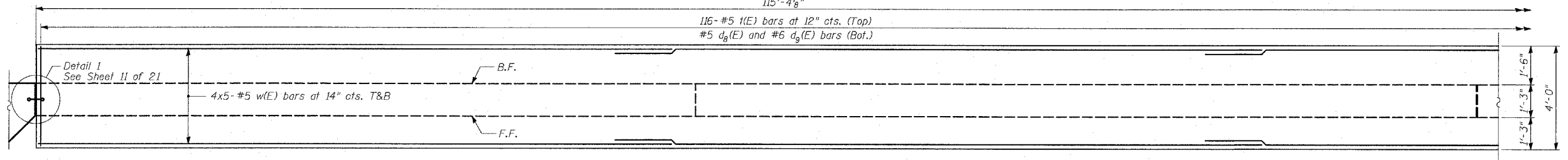
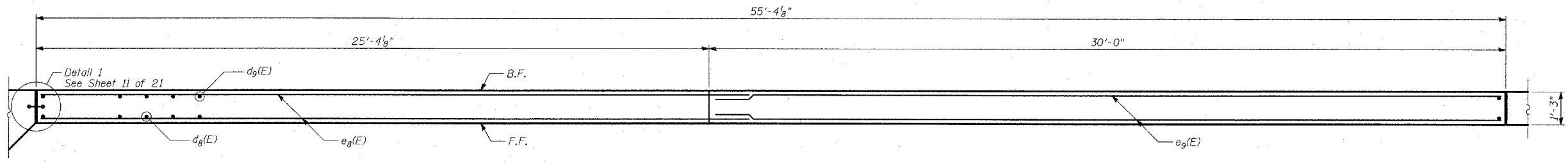


ELEVATION
(Fluted Knee Wall - Front Face)



FOOTING PLAN



WALL PLAN
(Footing omitted for clarity)

- NOTES:**
1. B.F. - denotes Back Face.
 2. E.F. - denotes Each Face.
 3. F.F. - denotes Front Face.
 4. Work this Sheet with Sheet 11 of 21.
 5. For Lap Splices, see Sheet 6 of 21.

TYLIN INTERNATIONAL

| REVISIONS | |
|-----------|------|
| NAME | DATE |
| | |
| | |
| | |
| | |
| | |
| | |
| | |
| | |
| | |
| | |

ILLINOIS DEPARTMENT OF TRANSPORTATION
F.A.I. 94 (DAN RYAN EXPRESSWAY)
SOUTHBOUND EXIT RAMP RETAINING WALL
AT 79TH ST. - WALL 72
PLAN AND ELEVATION - FLUTED KNEE WALL
(1 OF 2)

S.N. 016-W971
SCALE: N.T.S.
DATE: MARCH 25, 2005

DESIGNED BY: MI, MAF
DRAWN BY: MAF, DJR
CHECKED BY: TO, MI