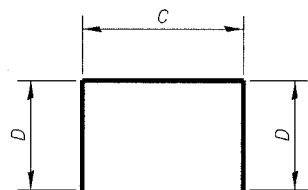


A & B DIMENSIONS

BAR	A	B
h101(E)	22'-10"	10"
h102(E)	13'-8"	10"
h104(E)	5'-7"	3'-0"
h105(E)	3'-0"	1'-0"
h111(E)	8'-2"	1'-8"
h401(E)	22'-10"	10"
h402(E)	13'-8"	10"
h404(E)	5'-7"	3'-0"
h405(E)	3'-0"	1'-0"
h411(E)	8'-2"	1'-8"

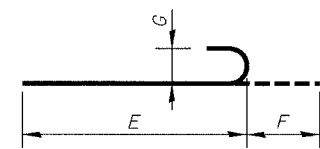
BARS h₁₀₁ (E), h₁₀₂ (E), h₁₀₄ (E), h₁₀₅ (E), h₁₁₁ (E), h₄₀₁ (E), h₄₀₂ (E), h₄₀₄ (E), h₄₀₅ (E), & h₄₁₁ (E)



C & D DIMENSIONS

BAR	C	D
d100(E)	6"	9"
h107(E)	7"	3'-0"
u100(E)	1'-2"	1'-8"
v106(E)	4'-2"	1'-9"
d400(E)	6"	9"
h407(E)	7"	3'-0"
u400(E)	1'-2"	1'-8"
v406(E)	4'-2"	1'-9"

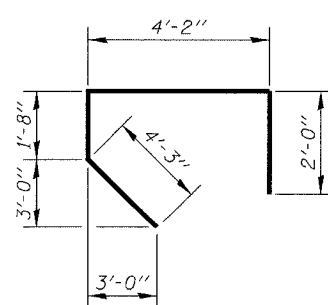
BARS d₁₀₀ (E), h₁₀₇ (E), u₁₀₀ (E), v₁₀₆ (E), d₄₀₀ (E), h₄₀₇ (E), u₄₀₀ (E), & v₄₀₆ (E)



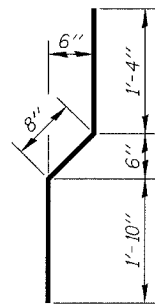
E, F, & G DIMENSIONS

BAR	E	F	G
n100(E)	12'-9"	1'-3"	11 ³ / ₄ "
n101(E)	12'-9"	10"	7"
n102(E)	6'-3"	10"	7"
n400(E)	12'-9"	1'-3"	11 ³ / ₄ "
n401(E)	12'-9"	10"	7"
n402(E)	6'-3"	10"	7"

BARS n₁₀₀ (E), n₁₀₁ (E), n₁₀₂ (E), n₄₀₀ (E), n₄₀₁ (E), & n₄₀₂ (E)



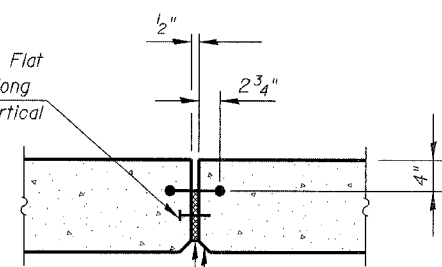
BARS v₁₀₁ (E) & v₄₀₁ (E)



BARS v₁₀₄ (E) & v₄₀₄ (E)

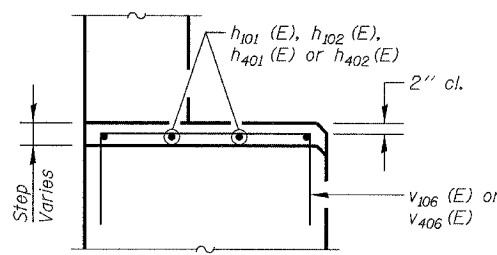
* Cost Included with "Concrete Structures".

* Concrete Nails Flat Head C.S.-1" long at 12" cts. vertical (Typ.)



* 1/2" Premolded Joint Filler with a 6" Non-Metallic Water Seal (Typ.)
1/2" Chamfer (Typ.)

WALL EXPANSION JOINT DETAIL



STEP REINFORCEMENT

WEST ABUTMENT BILL OF MATERIAL

BAR	NO.	SIZE	LENGTH	SHAPE
d100(E)	20	#4	2'-0"	□
h100(E)	156	#5	29'-9"	
h101(E)	8	#5	23'-8"	
h102(E)	8	#5	14'-6"	
h103(E)	32	#6	18'-8"	
h104(E)	88	#5	8'-7"	
h105(E)	28	#5	4'-0"	
h106(E)	28	#5	3'-0"	
h107(E)	8	#4	6'-7"	
h108(E)	184	#5	16'-8"	
h109(E)	32	#4	16'-8"	
h110(E)	12	#6	29'-0"	
h111(E)	4	#5	9'-10"	
n100(E)	282	#9	14'-0"	
n101(E)	92	#7	13'-7"	
n102(E)	72	#7	7'-1"	
t100(E)	282	#9	19'-8"	
t101(E)	46	#8	18'-8"	
t102(E)	25	#7	18'-8"	
t103(E)	40	#7	7'-0"	
t104(E)	106	#6	12'-8"	
u100(E)	16	#4	4'-6"	□
v100(E)	168	#7	15'-6"	
v101(E)	84	#5	12'-1"	
v102(E)	83	#5	6'-4"	
v103(E)	83	#5	5'-5"	
v104(E)	83	#5	3'-10"	
v105(E)	83	#5	3'-3"	
v106(E)	63	#4	7'-8"	
v107(E)	56	#6	11'-8"	
v108(E)	24	#6	9'-8"	
v109(E)	16	#7	23'-3"	
v110(E)	80	#5	3'-9"	
v111(E)	36	#5	28'-5"	
v112(E)	36	#7	21'-6"	
v113(E)	36	#5	18'-11"	
v114(E)	36	#7	10'-0"	
w100(E)	63	#5	28'-6"	
w101(E)	84	#5	25'-0"	
w102(E)	34	#5	15'-0"	
w103(E)	12	#5	31'-0"	
w104(E)	56	#5	16'-8"	
w105(E)	34	#5	14'-0"	
Reinforcement Bars, Epoxy Coated		LB	74280	
Concrete Structures		Cu. Yd.	657	
Structure Excavation		Cu. Yd.	3219	
Bridge Seat Sealer		Sq. Ft.	211	
Porous Granular Embankment		Cu. Yd.	1414	

EAST ABUTMENT BILL OF MATERIAL

BAR	NO.	SIZE	LENGTH	SHAPE
d400(E)	20	#4	2'-0"	□
h400(E)	156	#5	29'-9"	
h401(E)	8	#5	23'-8"	
h402(E)	8	#5	14'-6"	
h403(E)	32	#6	18'-8"	
h404(E)	88	#5	8'-7"	
h405(E)	28	#5	4'-0"	
h406(E)	28	#5	3'-0"	
h407(E)	8	#4	6'-7"	
h408(E)	184	#5	16'-8"	
h409(E)	32	#4	16'-8"	
h410(E)	12	#6	29'-0"	
h411(E)	4	#5	9'-10"	
n400(E)	282	#9	14'-0"	
n401(E)	92	#7	13'-7"	
n402(E)	72	#7	7'-1"	
t400(E)	282	#9	19'-8"	
t401(E)	46	#8	18'-8"	
t402(E)	25	#7	18'-8"	
t403(E)	40	#7	7'-0"	
t404(E)	106	#6	12'-8"	
u400(E)	16	#4	4'-6"	□
v400(E)	168	#7	15'-6"	
v401(E)	84	#5	12'-1"	
v402(E)	83	#5	6'-4"	
v403(E)	83	#5	5'-5"	
v404(E)	83	#5	3'-10"	
v405(E)	83	#5	3'-3"	
v406(E)	63	#4	7'-8"	
v407(E)	56	#6	11'-8"	
v408(E)	24	#6	9'-8"	
v409(E)	16	#7	23'-3"	
v410(E)	80	#5	3'-9"	
v411(E)	36	#5	28'-5"	
v412(E)	36	#7	21'-6"	
v413(E)	36	#5	18'-11"	
v414(E)	36	#7	10'-0"	
w400(E)	63	#5	28'-6"	
w401(E)	84	#5	25'-0"	
w402(E)	34	#5	15'-0"	
w403(E)	12	#5	31'-0"	
w404(E)	56	#5	16'-8"	
w405(E)	34	#5	14'-0"	
Reinforcement Bars, Epoxy Coated		LB	74280	
Concrete Structures		Cu. Yd.	657	
Structure Excavation		Cu. Yd.	3173	
Bridge Seat Sealer		Sq. Ft.	211	
Porous Granular Embankment		Cu. Yd.	1414	

Notes:

Reinforcement Bars designated (E) shall be epoxy coated.

Work this DWG. with DWGS. S-24 thru S-31.

REVISIONS	
NAME	DATE

ILLINOIS DEPARTMENT OF TRANSPORTATION
ABUTMENT MISCELLANEOUS DETAILS
 76TH STREET OVER FAI-94
 FAP ROUTE 1541 SECTION 1818 R-9
 COOK COUNTY
 STATION 73+49.33
 STRUCTURE NUMBER 016-2850
 SCALE: NONE
 DATE: March 25, 2005
 DESIGNED BY: TB
 CHECKED BY: WPM
 DRAWN BY: TL
 CHECKED BY: WPM

FILE: L:\16592\021\Cad\Sheet\Roadway Structures\Bridges\16592-2850-4B01.dgn

KNIGHT
Engineers & Architects