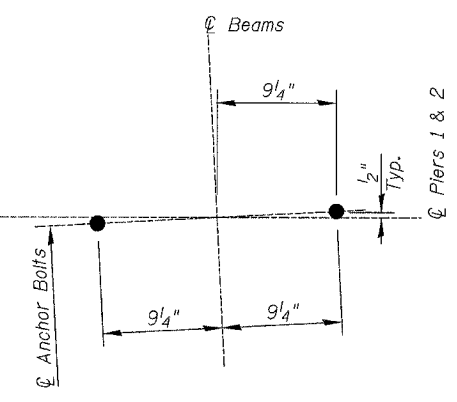


TOP PLAN - PIERS 1 & 2



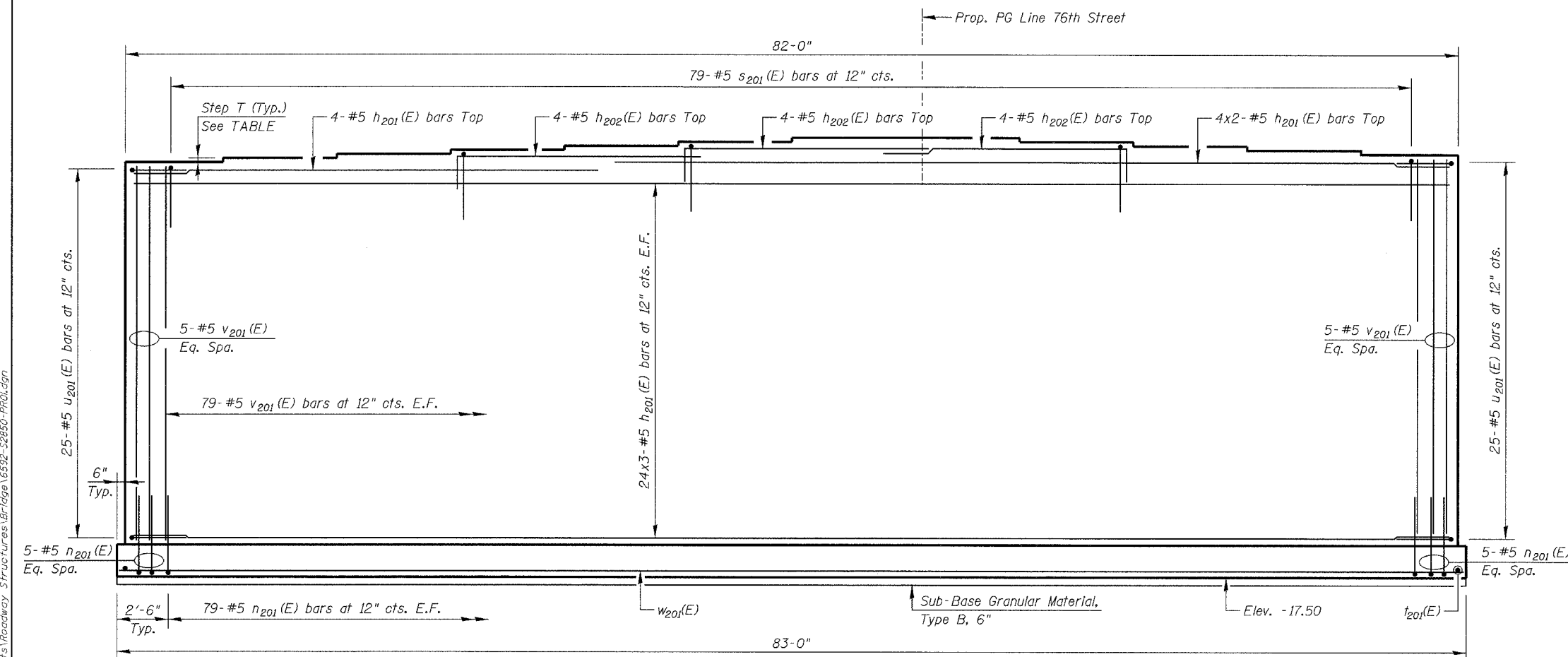
ANCHOR BOLTS - LAYOUT

PIER 1 BEARING SEAT ELEVATIONS

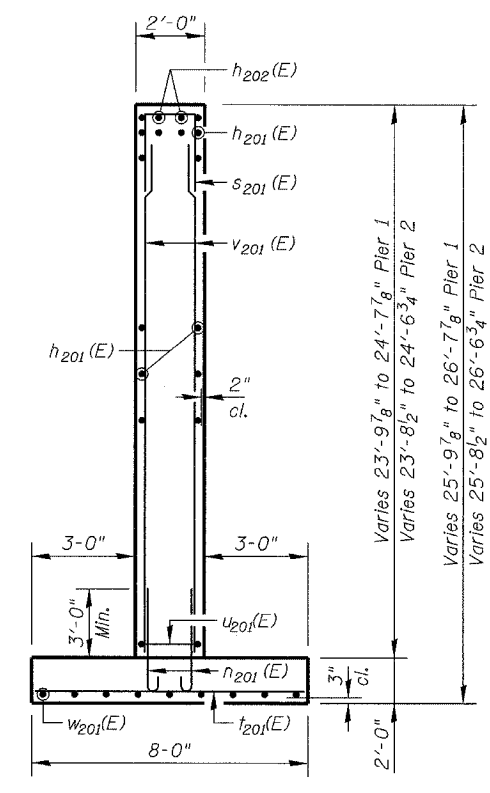
GIRDER	BRG. SEAT ELEVATION	STEP T- inch
G1	8.32	1 3/4"
G2	8.47	1 3/4"
G3	8.61	1 3/4"
G4	8.76	1 3/4"
G5	8.90	1 3/4"
G6	9.04	1 5/8"
G7	9.15	0
G8	9.15	1"
G9	9.07	1 5/8"
G10	8.94	1 3/4"
G11	8.79	1 3/4"
G12	8.64	1 3/4"

PIER 2 BEARING SEAT ELEVATIONS

GIRDER	BRG. SEAT ELEVATION	STEP T- inch
G1	8.21	1 3/4"
G2	8.36	1 3/4"
G3	8.50	1 3/4"
G4	8.65	1 3/4"
G5	8.81	1 7/8"
G6	8.95	1 3/4"
G7	9.07	0
G8	9.07	7/8"
G9	8.99	1 5/8"
G10	8.86	1 3/4"
G11	8.71	1 3/4"
G12	8.58	1 5/8"



ELEVATION - PIERS 1 & 2 (Looking East)



END VIEW

Notes:
 Space reinforcement bars to miss anchor bolts.
 Pour Steps monolithically with cap.
 All exposed edges shall have 3/4" chamfers except as noted.
 Estimated Soil Bearing Pressure = 5 ksf.

Bars Indicated thus 20x3-#5 indicates 20 lines of bars with 3 lengths per line.
 Reinforcement Bars designated (E) shall be epoxy coated.
 Work this DWG. with DWG. S-34.

Legend:
 E.F. = Each Face
Min. Bar Lap:
 Vertical Bars/Horizontal Bars #5 - 1'-8"
 Horizontal Top Bars #5 - 2'-5"

REVISIONS	
NAME	DATE

ILLINOIS DEPARTMENT OF TRANSPORTATION
PIER TOP PLAN & ELEVATION
 76TH STREET OVER FAI-94
 FAP ROUTE 1541 SECTION 1818 R-9
 COOK COUNTY
 STATION 73+49.33
 STRUCTURE NUMBER 016-2850
 SCALE: NONE
 DESIGNED BY: TB
 DRAWN BY: TL
 DATE: March 25, 2005
 CHECKED BY: WPM
 CHECKED BY: WPM

FILE: L:\6592.02\Cad\Drawings\Roadway_Structures\Bridges\6592-S2850-PROJ.dgn

