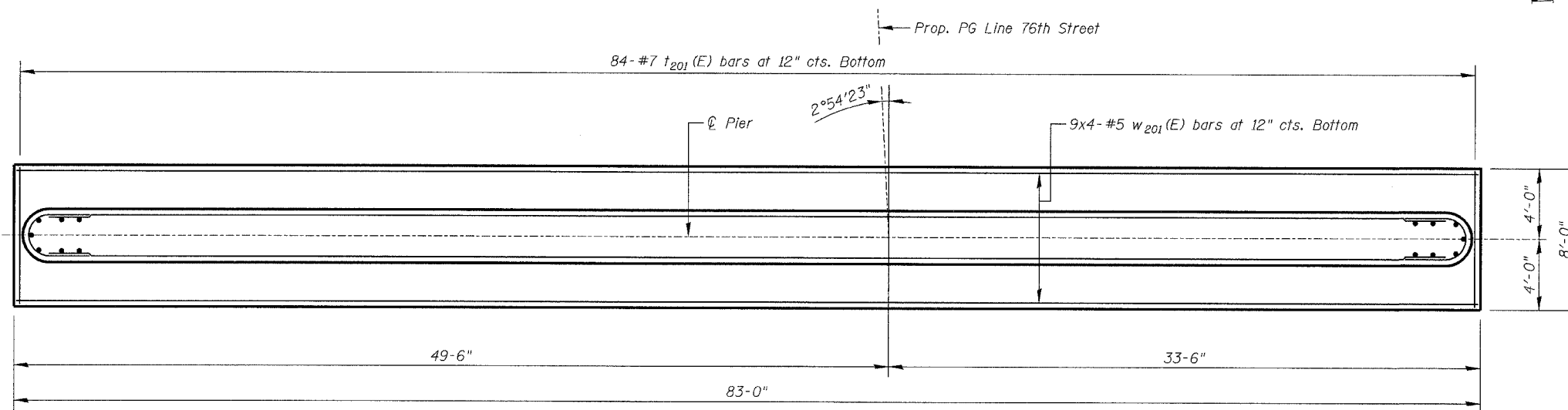


F.A.I. RTE.	SECTION	COUNTY	TOTAL SHEETS	SHEET NO.
94	*	COOK	907	704
STA.		TO STA.		
FED. ROAD DIST. NO.		ILLINOIS FED. AID PROJECT		
*(1516.1, 1717 & 1818) R-9		62695		



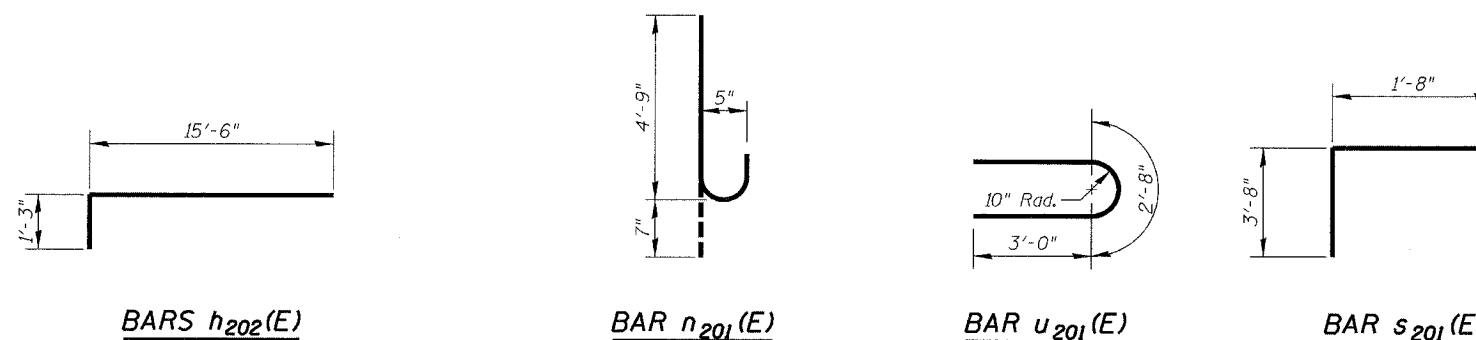
FOOTING PLAN
(Looking East)

PIER 1 BILL OF MATERIAL

BAR	NO.	SIZE	LENGTH	SHAPE
h201(E)	156	#5	28'-9"	
h202(E)	12	#5	16'-9"	
n201(E)	168	#5	5'-4"	U
s201(E)	79	#5	9'-0"	U
t201(E)	84	#7	7'-8"	
u201(E)	50	#5	8'-8"	U
v201(E)	168	#5	23'-0"	
w201(E)	36	#5	22'-6"	
Reinforcement Bars, Epoxy Coated			LB	13,210
Concrete Structures			Cu. Yd.	206

PIER 2 BILL OF MATERIAL

BAR	NO.	SIZE	LENGTH	SHAPE
h201(E)	156	#5	28'-9"	
h202(E)	12	#5	16'-9"	
n201(E)	168	#5	5'-4"	U
s201(E)	79	#5	9'-0"	U
t201(E)	84	#7	7'-8"	
u201(E)	50	#5	8'-8"	U
v201(E)	168	#5	23'-0"	
w201(E)	36	#5	22'-6"	
Reinforcement Bars, Epoxy Coated			LB	13,210
Concrete Structures			Cu. Yd.	206



Notes:

Reinforcement Bars designated (E) shall be epoxy coated.

Bars indicated thus 20x3-#5 indicates 20 lines of bars with 3 lengths per line.

All exposed edges shall have 3/4" chamfers except as noted.

Estimated Soil Bearing Pressure = 5 ksf.

Work this DWG. with DWG. S-33.

Min. Bar Lap:
Horizontal Top Bars
#5 - 2'-5"

DWG. S-34 of 42

REVISIONS		ILLINOIS DEPARTMENT OF TRANSPORTATION PIER FOOTING PLAN & DETAILS 76TH STREET OVER FAI-94 FAP ROUTE 1541 SECTION 1818 R-9 COOK COUNTY STATION 73+49.33 STRUCTURE NUMBER 016-2850
NAME	DATE	
		SCALE: NONE DATE: March 25, 2005 DESIGNED BY: TB DRAWN BY: TL CHECKED BY: WPM CHECKED BY: WPM
REVISIONED	04/15/05	

FILE: L:\6592.D2\CCD\5\sheet5\Rev\Ised 178\04-15-05\6592-S2850-PR02_Rev045925.dgn

KNIGHT
Engineers & Architects