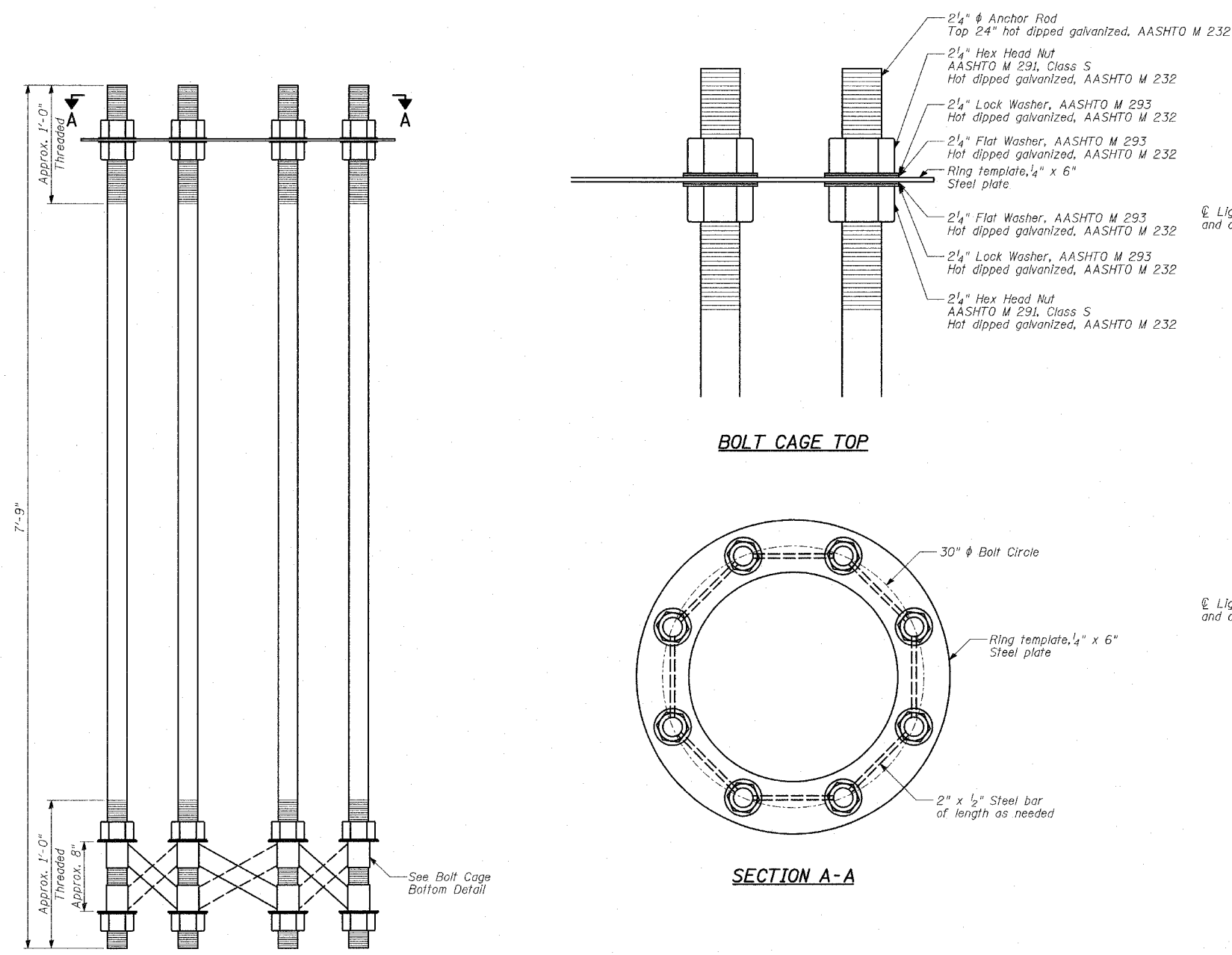


| | | | | |
|---------------------------|---------|-----------------|------------------|-----------|
| F.A.I. RTE. | SECTION | COUNTY | TOTAL SHEETS | SHEET NO. |
| 94 | | COOK | 907 | 714 |
| STA. 1200+00.00 | | TO STA. 1365+00 | | |
| FED. ROAD DIST. NO. | | ILLINOIS | FED. AID PROJECT | |
| (1516.1, 1717 & 1818) R-9 | | 62695 | | |

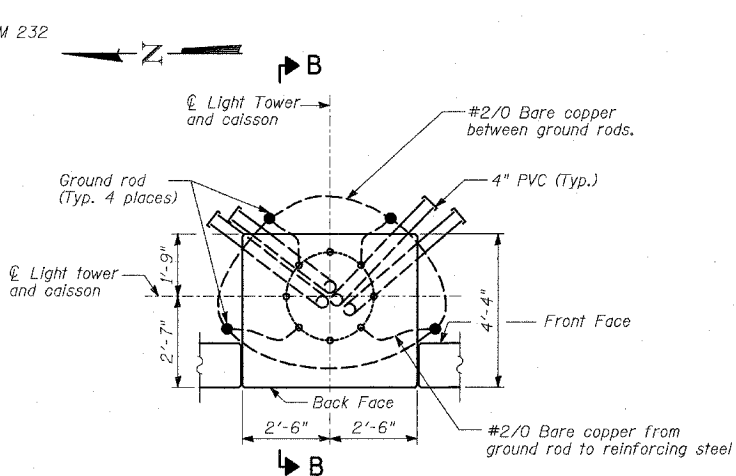


ANCHOR BOLT CAGE

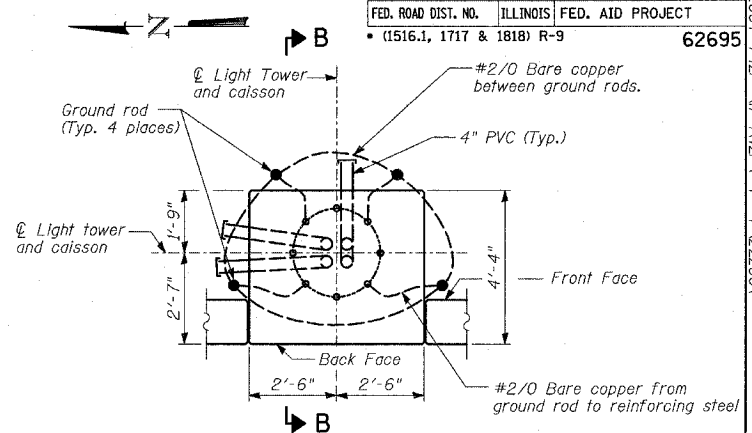
BOLT CAGE TOP

SECTION A-A

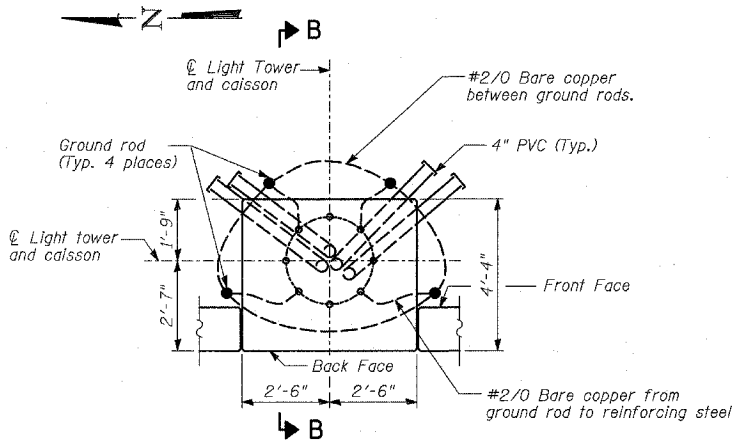
BOLT CAGE BOTTOM



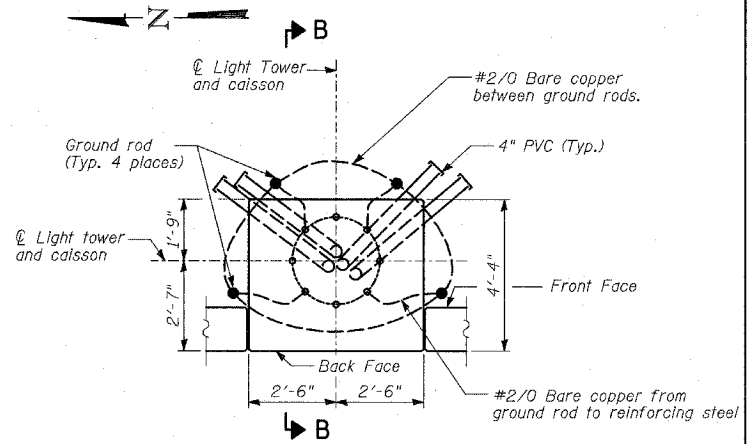
PLAN - 60KL4 CONDUIT PLACEMENT



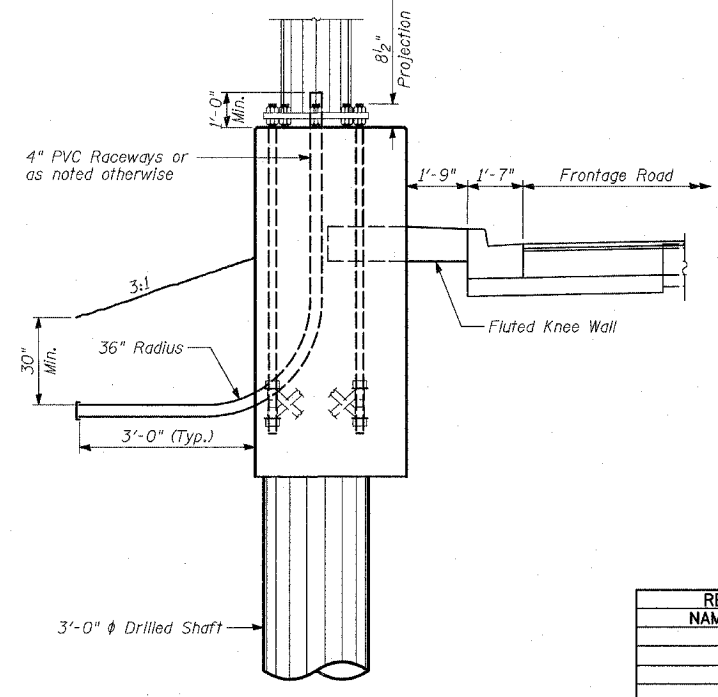
PLAN - 5PAB2 CONDUIT PLACEMENT



PLAN - 6ACD4 CONDUIT PLACEMENT



PLAN - 6ACD5 CONDUIT PLACEMENT



SECTION B-B

- NOTES:**
- Anchor rods shall be straight and shall be according to AASHTO M 314 or ASTM F1554, Grade 105 and galvanized according to Article 1006.09.
 - Anchor rod information shall be submitted for approval and shall be fully coordinated with tower manufacturer's requirements.
 - The Anchor Rods shall be vertical. No adjustment shall be allowed after the foundation is placed.
 - The gap between the foundation and the base plate shall be enclosed with a stainless steel screen fastened with a stainless steel band.
 - The Light Tower shall not be erected until after the concrete has been cured according to Article 1020.13.
 - Two anchor rods opposite each other shall have the anchor rod threads peened after nuts are installed.
 - Refer to BE501 for details.

TYLIN INTERNATIONAL

| REVISIONS | |
|-----------|------|
| NAME | DATE |
| | |
| | |
| | |
| | |
| | |
| | |
| | |
| | |

ILLINOIS DEPARTMENT OF TRANSPORTATION
F.A.I. 94 (DAN RYAN EXPRESSWAY)
HMLT DETAILS AT FLUTED KNEE WALL
 S.N. DESIGNED BY: MI, DJR
 SCALE: N.T.S. DRAWN BY: DJR
 DATE: MARCH 25, 2005 CHECKED BY: TD