





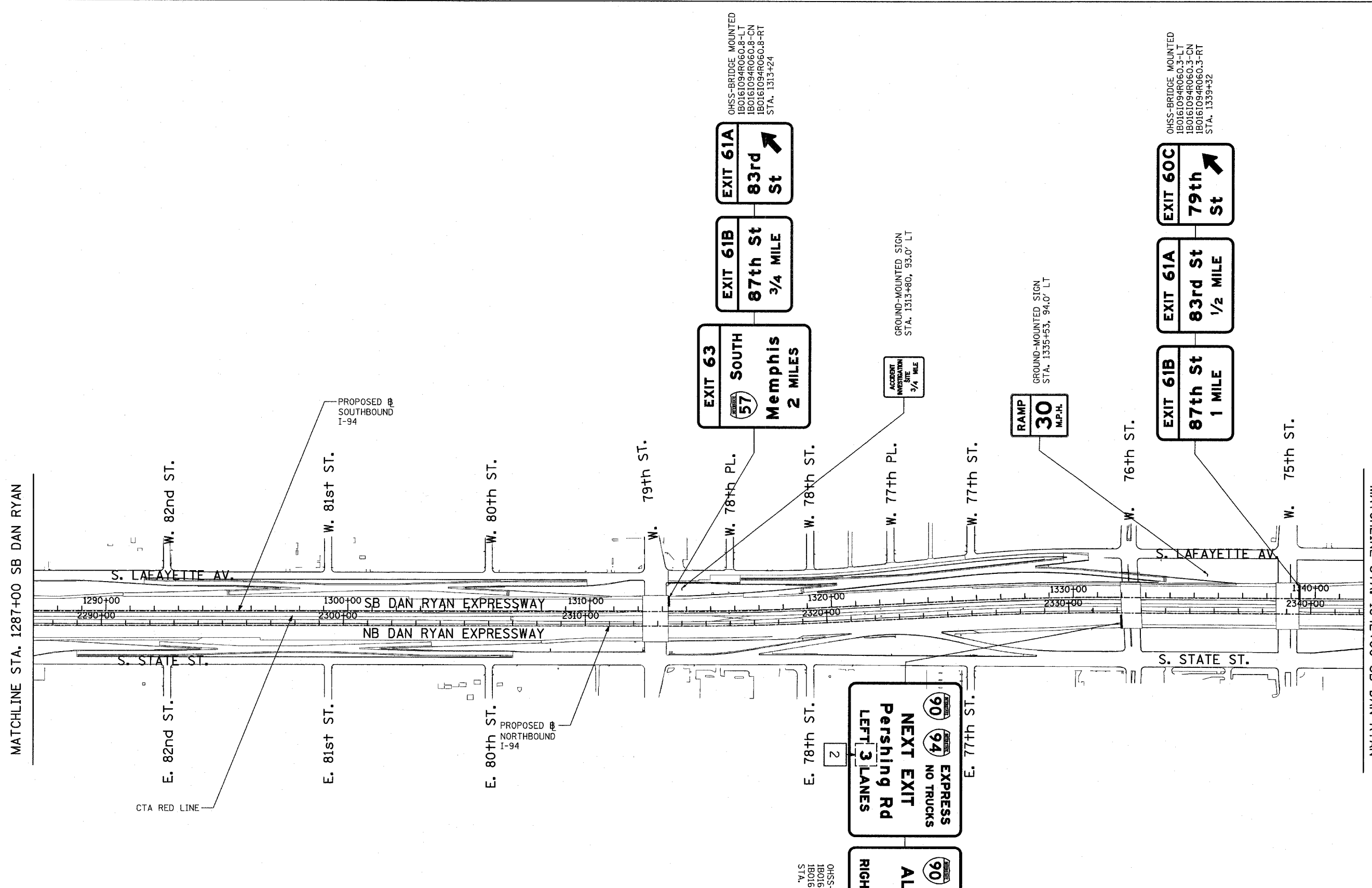


F.A.I. RTE.	SECTION	COUNTY	TOTAL SHEETS	SHEET NO.
94	.	COOK	907	737
STA. 1200+00.00		TO STA. 1365+00		
FED. ROAD DIST. NO.		ILLINOIS	FED. AID PROJECT	
(1516.1, 1717 & 1818) R-9		62695		



**SIGNING LEGEND:**

-  PROPOSED GROUND MOUNTED SIGN
-  PROPOSED OVERHEAD SIGN STRUCTURE - TRUSS
-  PROPOSED OVERHEAD SIGN STRUCTURE - BRIDGE MOUNTED
-  PROPOSED OVERHEAD SIGN STRUCTURE - CANTILEVER
-  PROPOSED SIGN
-  OVERLAY SIGN PANEL



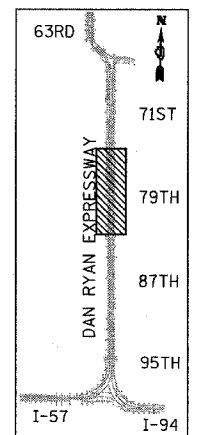
OHSS-BRIDGE MOUNTED  
1B0161094R060.8-LT  
1B0161094R060.8-CN  
1B0161094R060.8-RT  
STA. 1313+24

OHSS-BRIDGE MOUNTED  
1B0161094R060.3-LT  
1B0161094R060.3-CN  
1B0161094R060.3-RT  
STA. 1339+32

GROUND-MOUNTED SIGN  
STA. 1313+80, 93.0' LT

GROUND-MOUNTED SIGN  
STA. 1335+53, 94.0' LT

OHSS-BRIDGE MOUNTED  
1B0161094R060.4-LT  
1B0161094R060.4-RT  
STA. 2332+18



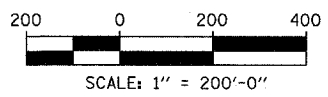
LOCATION MAP

REVISIONS	
NAME	DATE

ILLINOIS DEPARTMENT OF TRANSPORTATION  
F.A.I. 94 (DAN RYAN EXPRESSWAY)

PROPOSED SIGNING  
STA. 1287+00 TO STA 1342+00  
SHEET 5 OF 6

SCALE: 1" = 200'  
DATE: MARCH 25, 2005  
DRAWN BY: AMB  
CHECKED BY: TGB



TYLIN INTERNATIONAL

3/30/2005 12:45:27 PM