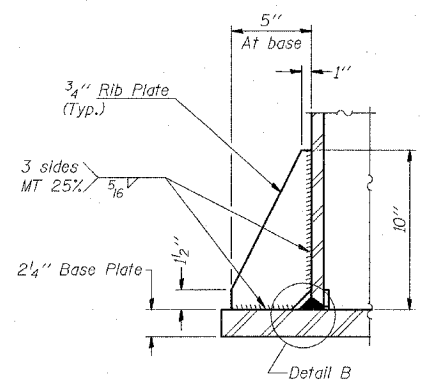
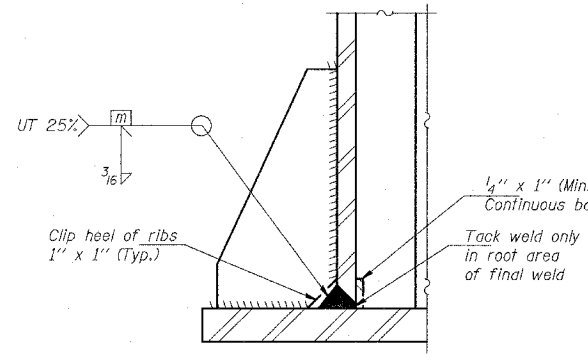


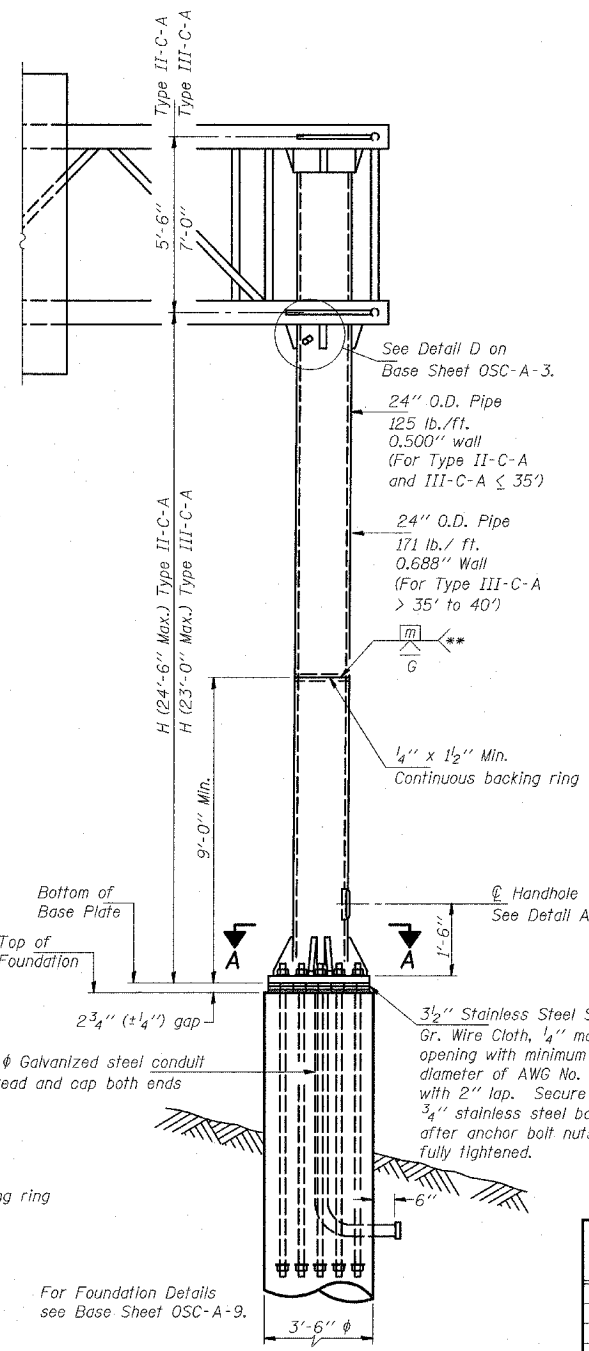
SECTION A-A



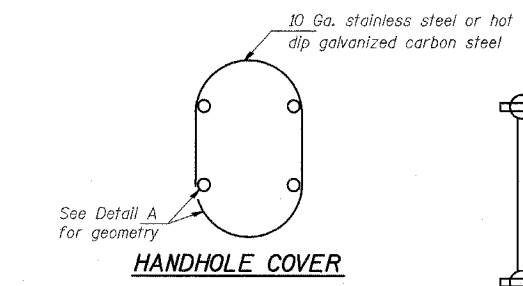
SECTION B-B



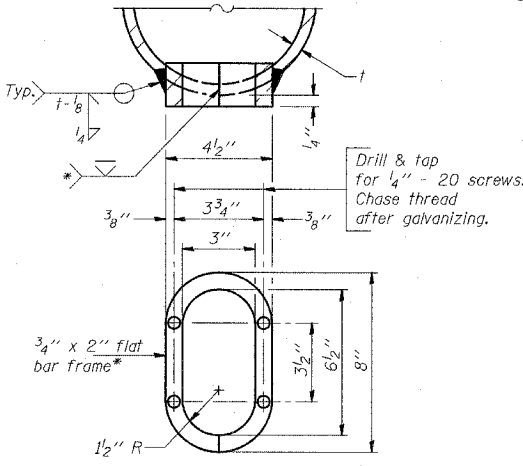
DETAIL B
(Typical rib)



FRONT ELEVATION



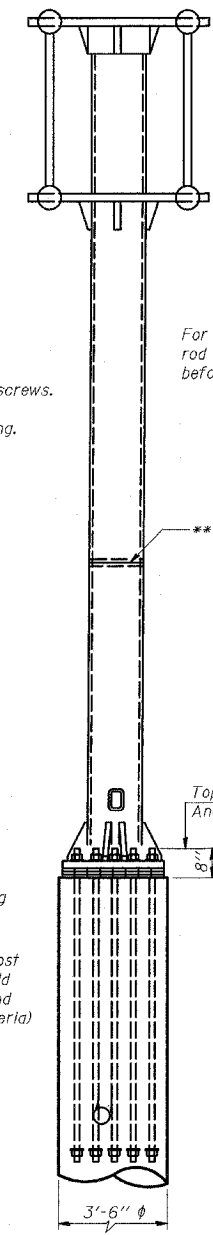
HANDHOLE COVER



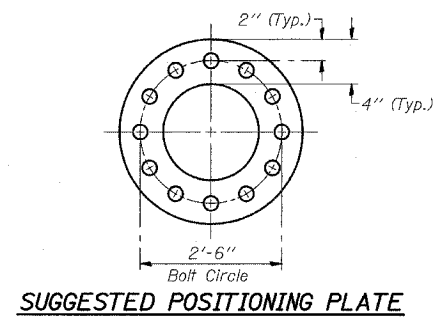
DETAIL A

Provide 8" x 4 1/2" cover. Outside corners = 2 1/4" radius. Provide 4 - 5/16" holes in cover for 1/4" - 20 round head hot dip galvanized or stainless steel machine screws. (See cover details.)

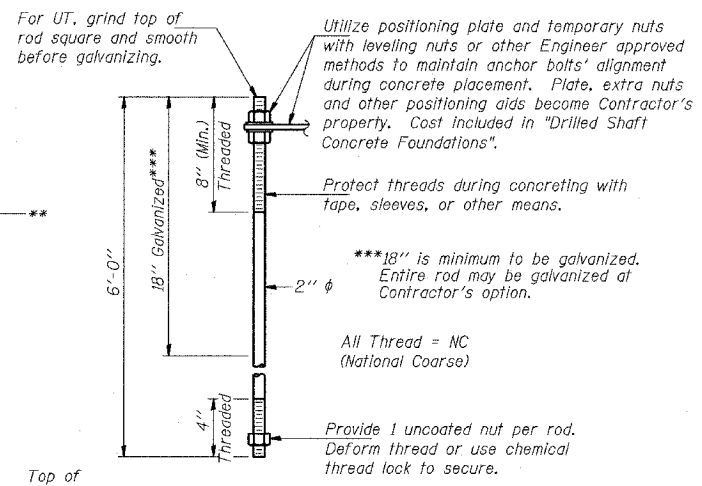
Structure Number	Station	H
IC0161057L357.8	117+30	14.0'
IC0161057R063.0	144+75	13.5'
IC0161094R062.6	1216+75	15.0'
IC0161094R062.4	1227+50	16'



SIDE ELEVATION



SUGGESTED POSITIONING PLATE



ANCHOR ROD DETAIL

Anchor rods shall conform to AASHTO M314 Grade 55 and meet Charpy V-Notch (CVN) energy of 15 lb.-ft. at 10° F. before galvanizing. Galvanize the upper 18" (minimum) and associated M291, Grade A, C or DH heavy hex nuts and hardened washers per AASHTO M232. No welding shall be permitted on rods. Provide an unfinished nut at bottom, a hexagon locknut and washer above base plate and a leveling nut and washer below base plate. Nuts shall each be tightened with 200 lb.-ft. minimum torque against base plate. Before or after threading, but before galvanizing, each anchor rod shall be ultrasonically tested (UT) by a Level II or III inspector, qualified in accord with ANSI guidelines, using a straight beam, 1/2" diameter 3.5 mhz. transducer, to insure no rejectable flaws exist in the upper 18" (tension criteria). Cost of testing included in "Drilled Shaft Concrete Foundations".

NUMBER	REVISION	DATE

OSC-A-5

11/1/2002

TYLIN INTERNATIONAL

REVISIONS	
NAME	DATE

ILLINOIS DEPARTMENT OF TRANSPORTATION
F.A.I. 94 (DAN RYAN EXPRESSWAY)
CANTILEVER SIGN STRUCTURES
TYPE II-C-A & III-C-A TRUSS SUPPORT POST
ALUMINUM TRUSS & STEEL POST

SCALE: AS NOTED DRAWN BY: AMB
DATE: MARCH 25, 2005 CHECKED BY: TB