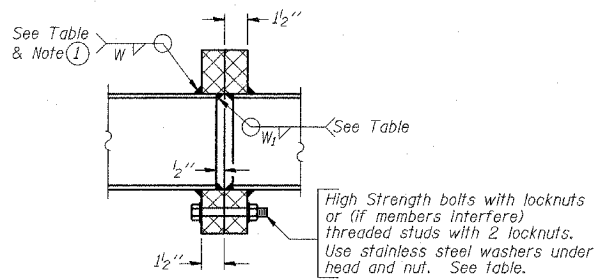


STATE OF ILLINOIS  
DEPARTMENT OF TRANSPORTATION

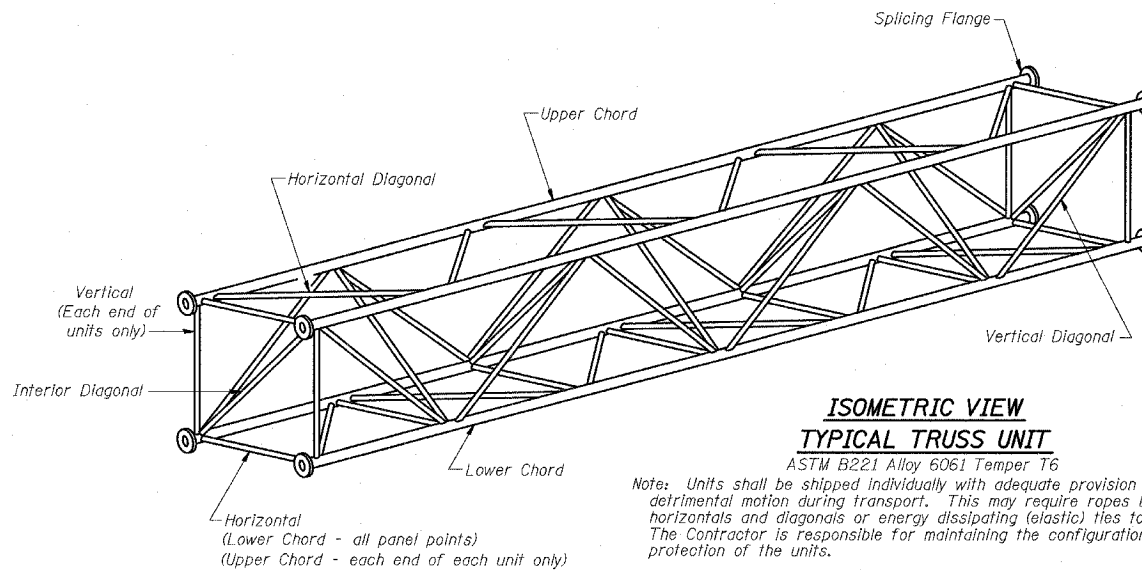
TRUSS UNIT TABLE

Structure Number	Station	Design Truss Type	Exterior Units (2)				Interior Unit				Upper & Lower Chord		Verticals; Horizontals; Vertical, Horizontal, and Interior Diagonals		Camber at Midspan	Splicing Flange				
			No. Panels per Unit	Unit Lgth.(L <sub>o</sub> )	Panel Lgth.(P)	No. Req'd.	No. Panels per Unit	Unit Lgth.(L <sub>i</sub> )	Panel Lgth.(P)	O.D.	Wall	O.D.	Wall	Bolts		Weld Sizes		A	B	
														No./Splice		Dia.	W			W <sub>1</sub>
ISO161094R060.0	1355+91	I-A	6	29'-3 1/2"	4'-7"	1	6	28'-6"	4'-6 1/2"	5"	5/16"	2 1/2"	5/16"	2.55"	6	7/8"	5/16"	1/4"	8 3/4"	11 3/4"
ISO161094R061.3	1286+85	III-A	6	31'-9"	4'-11 3/4"	1	6	31'-1 1/2"	4'-11 3/4"	7"	5/16"	3 1/4"	5/16"	1.95"	6	1"	7/16"	5/16"	11 1/2"	15"
ISO161094R061.5	1276+67	II-A	7	37'-0 1/4"	5'-0 1/4"	1	6	31'-4 1/2"	5'-0 1/4"	6 1/2"	5/16"	3"	5/16"	3.30"	6	1"	3/8"	1/4"	11"	14 1/4"
ISO161094R061.9	1251+43	II-A	6	32'-1 1/2"	5'-0 1/2"	1	6	31'-6"	5'-0 1/2"	6"	5/16"	3"	5/16"	2.75"	6	7/8"	3/8"	1/4"	10 1/4"	13 3/4"
ISO161094R062.5	1224+00	II-A	7	39'-11 1/4"	5'-5 1/4"	1	6	33'-10 1/2"	5'-5 1/4"	7"	5/16"	3"	5/16"	3.73"	6	1"	3/8"	1/4"	11 1/2"	15"
ISO161094R062.9	149+87	II-A	7	38'-5 3/4"	5'-2 3/4"	1	6	32'-7 1/2"	5'-2 3/4"	6 1/2"	5/16"	3"	5/16"	3.5"	6	1"	3/8"	1/4"	11"	14 1/2"



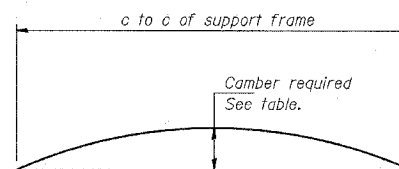
SECTION B-B

① Splicing Flanges shall be attached to each truss unit with the truss shop assembled to camber shown. Truss units shall be in proper alignment and flange surfaces shall be shop bolted into full contact before welding. Sufficient external welds or tacks shall be made to secure flanges until remaining welds are made after disassembly. Adjacent flanges shall be "match marked" to insure proper field assembly.



ISOMETRIC VIEW  
TYPICAL TRUSS UNIT

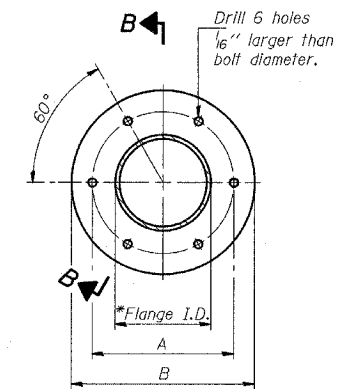
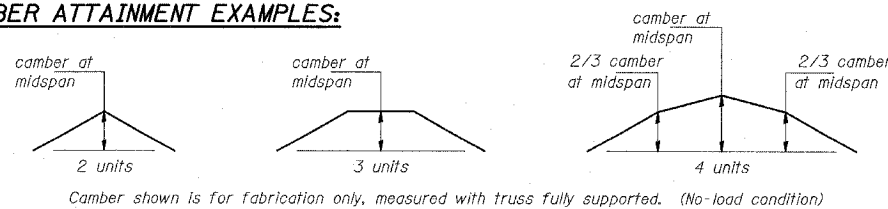
ASTM B221 Alloy 6061 Temper T6



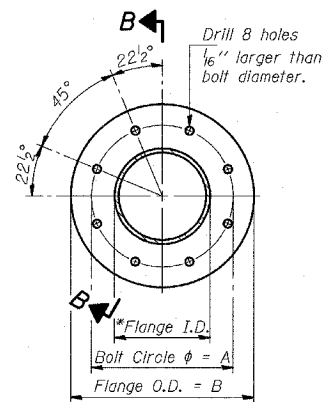
CAMBER DIAGRAM

Camber curve shown is theoretical. Actual camber attained by slope changes at splices between units.

CAMBER ATTAINMENT EXAMPLES:



TRUSS TYPES I-A, II-A, & III-A



TRUSS TYPES II-A & III-A

SPLICING FLANGES

ASTM B221, Alloy 6061-T6 or ASTM B209, Alloy 6061-T651

\*To fit O.D. of Chord with maximum gap of 1/16".

NUMBER	REVISION	DATE

DESIGNED	20
CHECKED	EXAMINED
DRAWN	PASSED
CHECKED	

OS4-A-2 11/1/2002

TYLIN INTERNATIONAL

REVISIONS	
NAME	DATE

ILLINOIS DEPARTMENT OF TRANSPORTATION  
F.A.I. 94 (DAN RYAN EXPRESSWAY)  
OVERHEAD SIGN STRUCTURES  
ALUMINUM TRUSS DETAILS  
FOR TRUSS TYPES I-A, II-A AND III-A

SCALE: AS NOTED DRAWN BY: AMB  
DATE: MARCH 25, 2005 CHECKED BY: TB