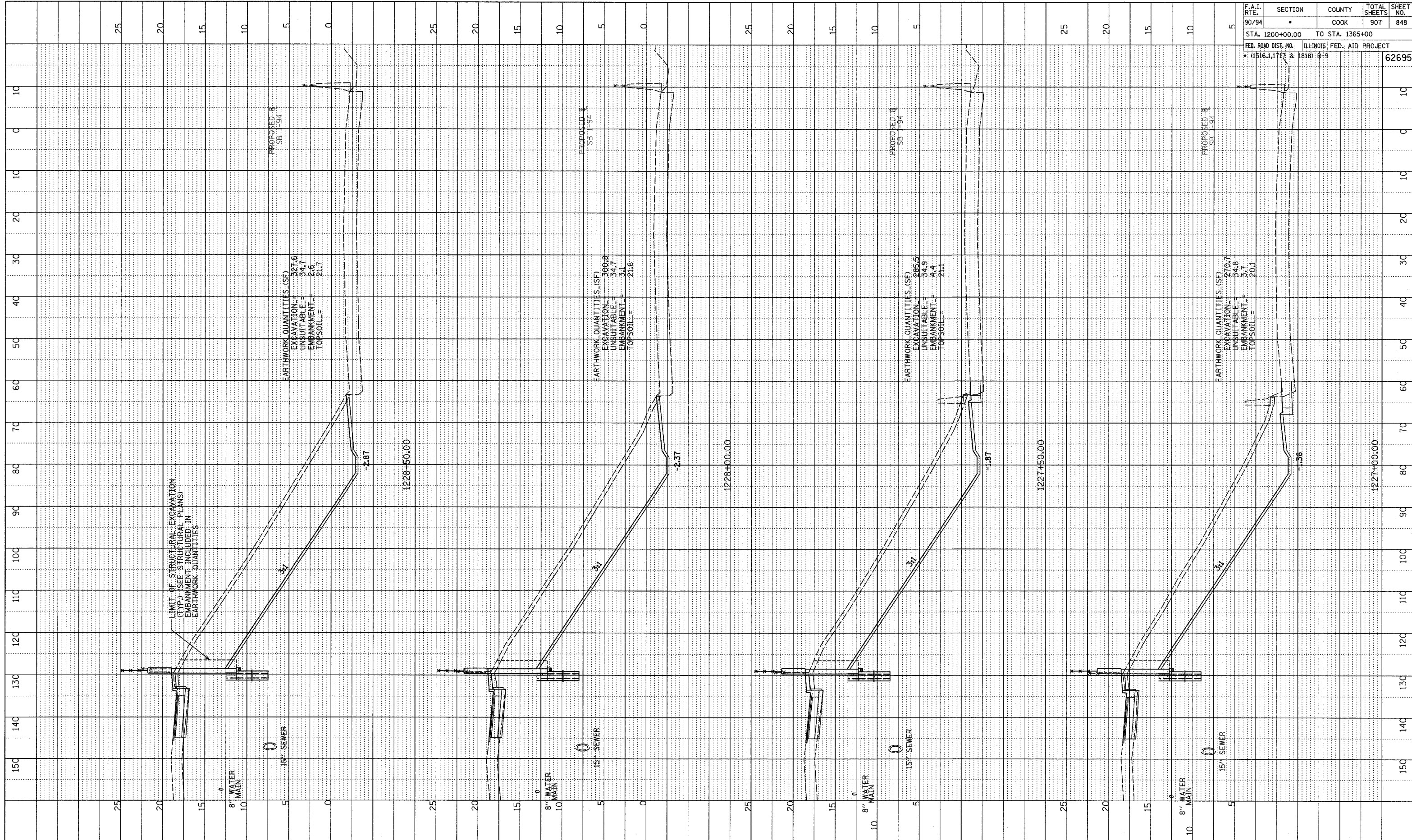


F.A.I. RTE.	SECTION	COUNTY	TOTAL SHEETS	SHEET NO.
90/94	•	COOK	907	848
STA. 1200+00.00 TO STA. 1365+00		ILLINOIS FED. AID PROJECT		
FED. ROAD DIST. NO. (1516.1, 1717 & 1818) R-9		62695		



LIMIT OF STRUCTURAL EXCAVATION (TYP.) (SEE STRUCTURAL PLANS) EMBANKMENT INCLUDED IN EARTHWORK QUANTITIES

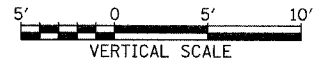
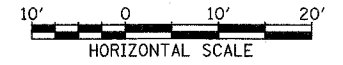
8" WATER MAIN  
15' SEWER

8" WATER MAIN  
15' SEWER

8" WATER MAIN  
15' SEWER

8" WATER MAIN  
15' SEWER

TYLIN INTERNATIONAL



SB 95th ST. EXIT RAMP  
STA. 1227+00 TO STA. 1228+50

FROM ALL PLANNED, GRADES CHECKED, STRUCTURE NOTATIONS CHFD  
 NO. \_\_\_\_\_

P:\0231\road\97\848\17\848-1.dgn