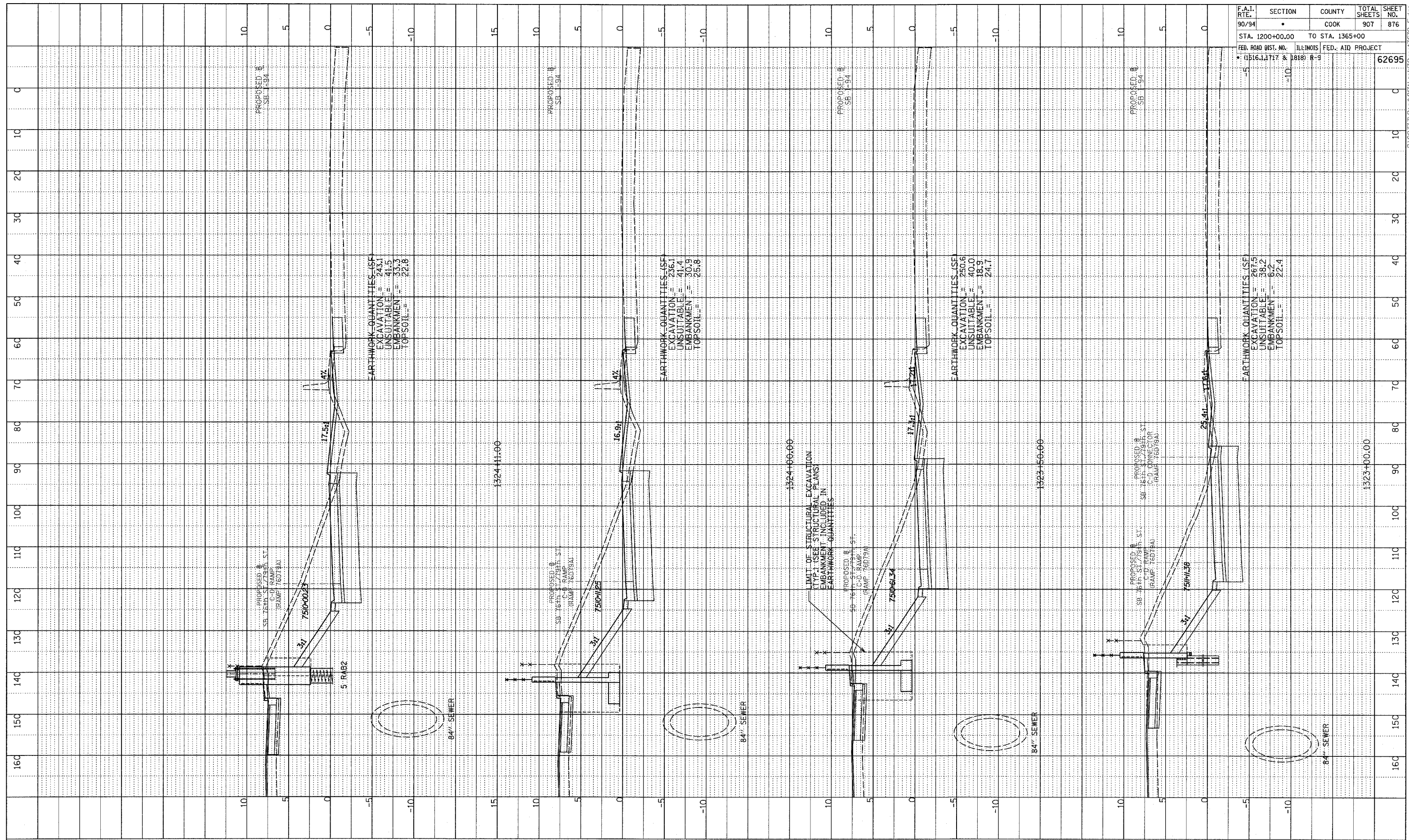
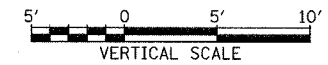


PROFILE  
 GRADES CHECKED  
 NO. NOTED  
 STRUCTURE NOTATIONS CHKD

F.A.I. RTE.	SECTION	COUNTY	TOTAL SHEETS	SHEET NO.
90/94	•	COOK	907	876
STA. 1200+00.00		TO STA. 1365+00		
FED. ROAD DIST. NO.		ILLINOIS	FED. AID PROJECT	
• (1516.1, 1717 & 1818) R-9				62695



TYLIN INTERNATIONAL



SB 76th TO 79th ST. CD RAMP  
STA. 1323+00 TO STA. 1324+11

P:\0231\3\Road\CD Ramp\11\Besshi 619-F.dgn