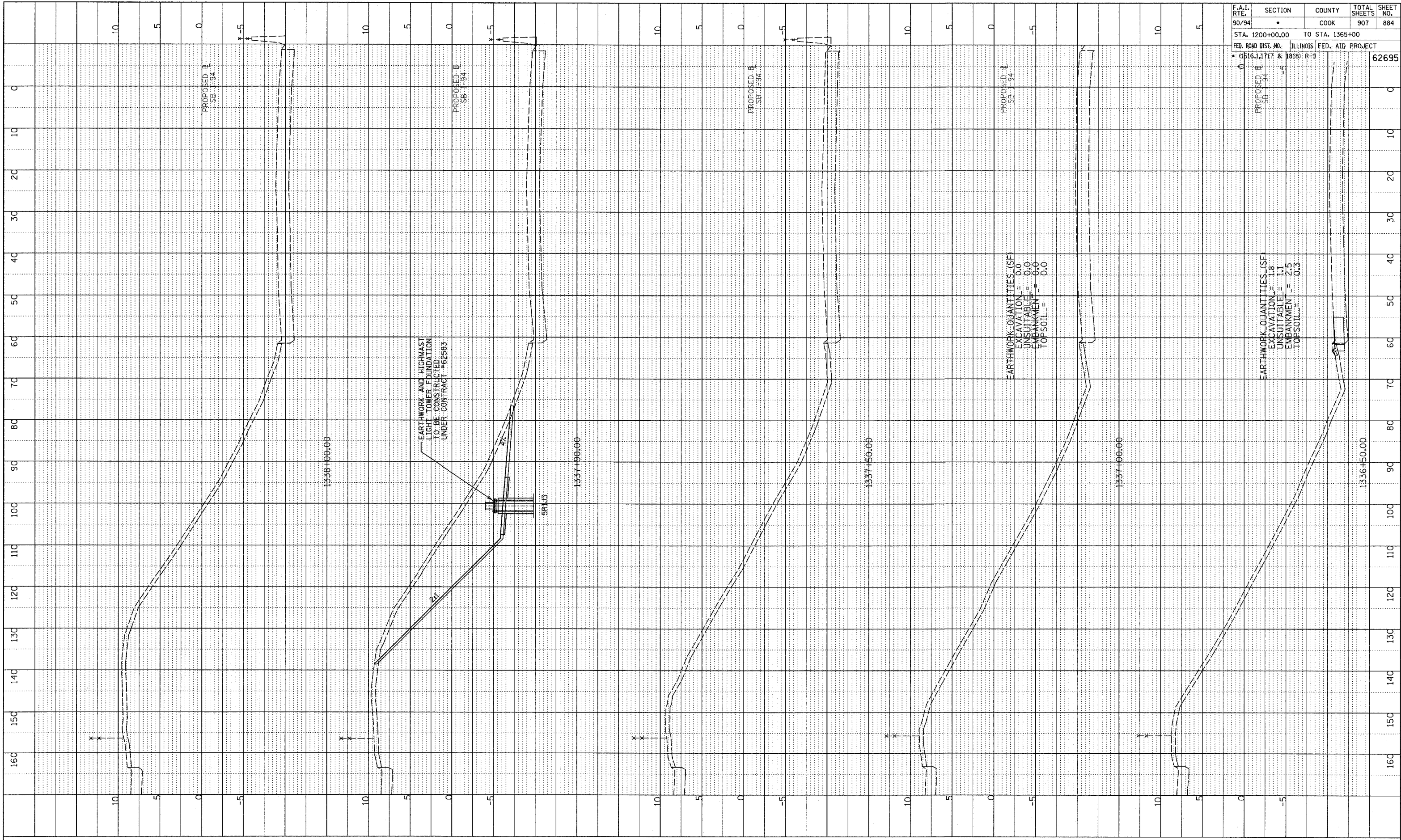
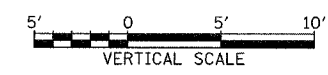
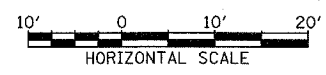


PLOTTED
 GRADIS CHECKED
 STRUCTURE NOTATIONS CHECKED
 NO. _____

F.A.I. RTE.	SECTION	COUNTY	TOTAL SHEETS	SHEET NO.
90/94		COOK	907	884
STA. 1200+00.00 TO STA. 1365+00				
FED. ROAD DIST. NO. ILLINOIS FED. AID PROJECT				
• (1516.11717 & 1818) R-9		62695		



TYLIN INTERNATIONAL



SB 76th TO 79th ST. CD RAMP
 STA. 1336+50 TO STA. 1338+00

P:\02313\Road\CD RAMP\76-79\1336-1338\1336-1338-907-884.dwg