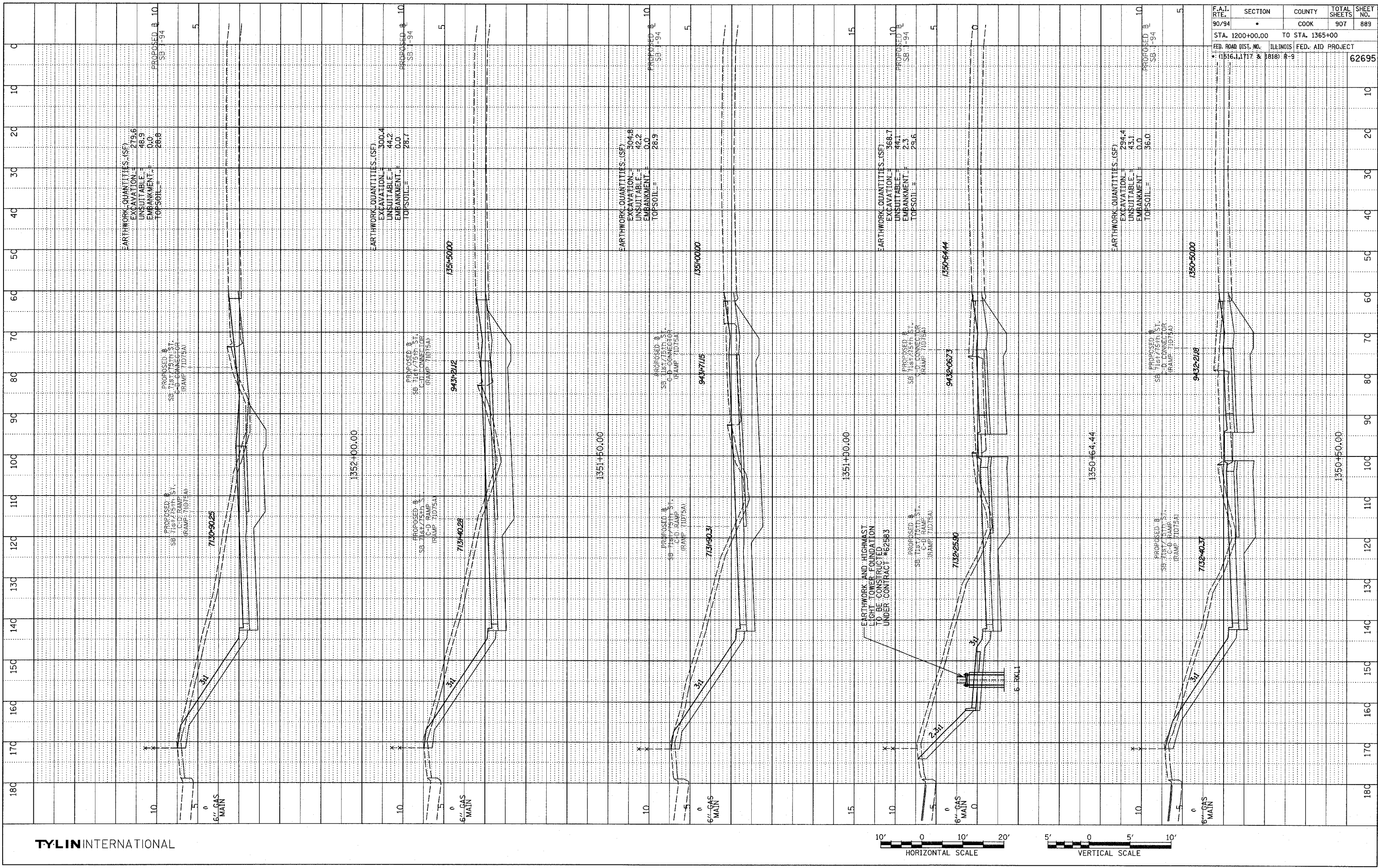
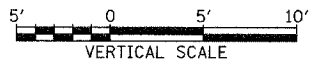
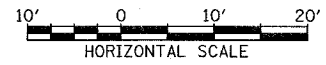


NOTE BOOK NO. _____
 PLOTTED, CHECKED, AND APPROVED BY _____
 STRUCTURE NOTATION: CHAD



TYLIN INTERNATIONAL



F.A.I. RTE.	SECTION	COUNTY	TOTAL SHEETS	SHEET NO.
90/94	*	COOK	907	889
STA. 1200+00.00		TO STA. 1365+00		
FED. ROAD DIST. NO.		ILLINOIS FED. AID PROJECT		
* (1516.1, 1717 & 1818) R-9				62695

P:\02373\Road\7\Drawings\Bussht175_F.dgn