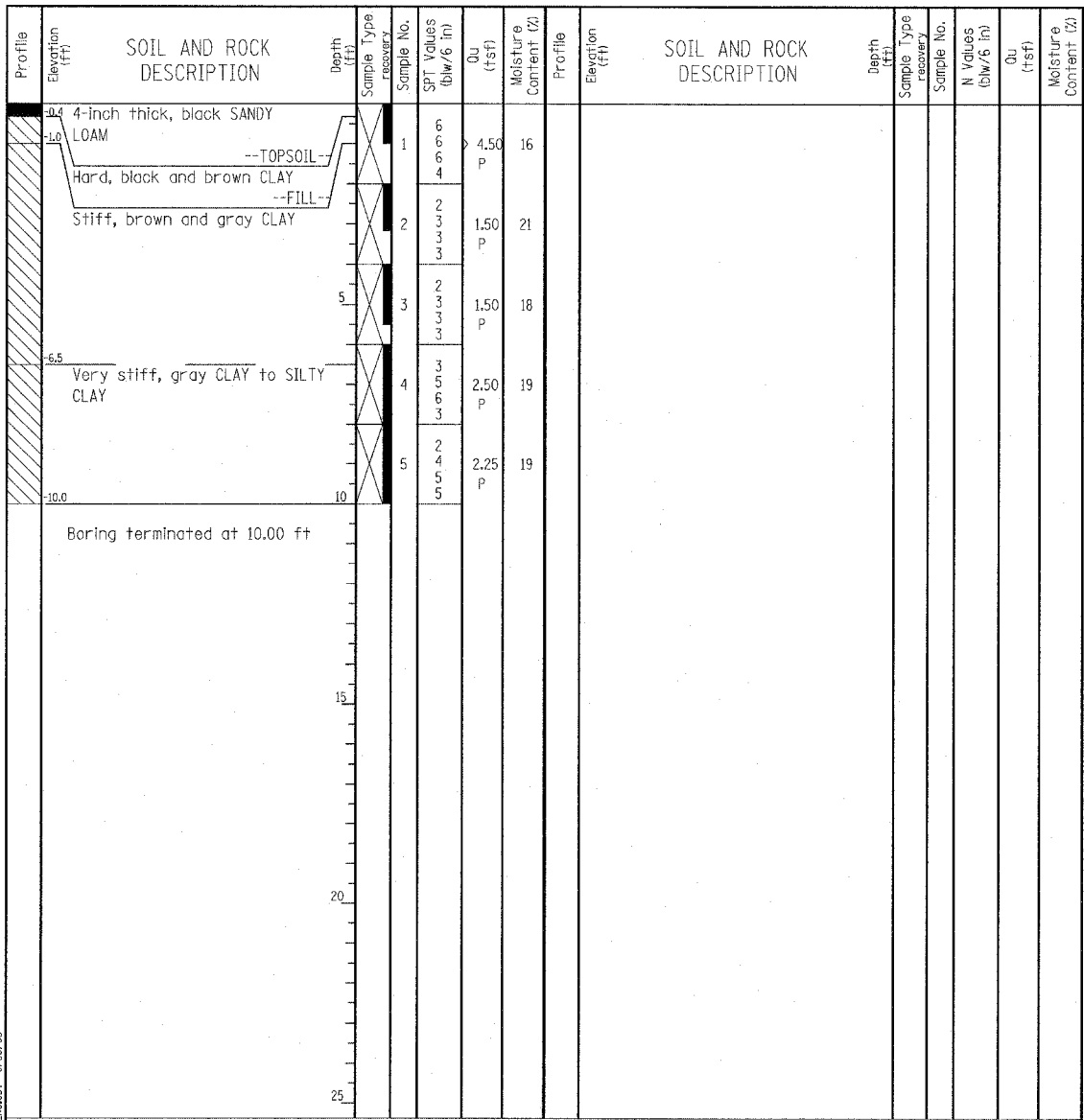


W Wang Engineering, INC.
 Consulting Geotechnical and Environmental Engineers
 wangeng3@wangeng.com
 1145 Main Street
 Lombard, IL 60148
 Telephone: 630 953-9928
 Fax: 630 953-9938

BORING LOG P-115
 WEI Job No.: 414-07-01
 Client: T. Y. LIN International
 Project: Dan Ryan Improvements
 Location: From 95th Street to 69th Street

Datum: CCD
 Elevation: -0.04 ft
 North: 1853656.75 ft
 East: 1177329.78 ft
 Station: 1322+84.26
 Offset: 61.77 LT

Page 1 of 1



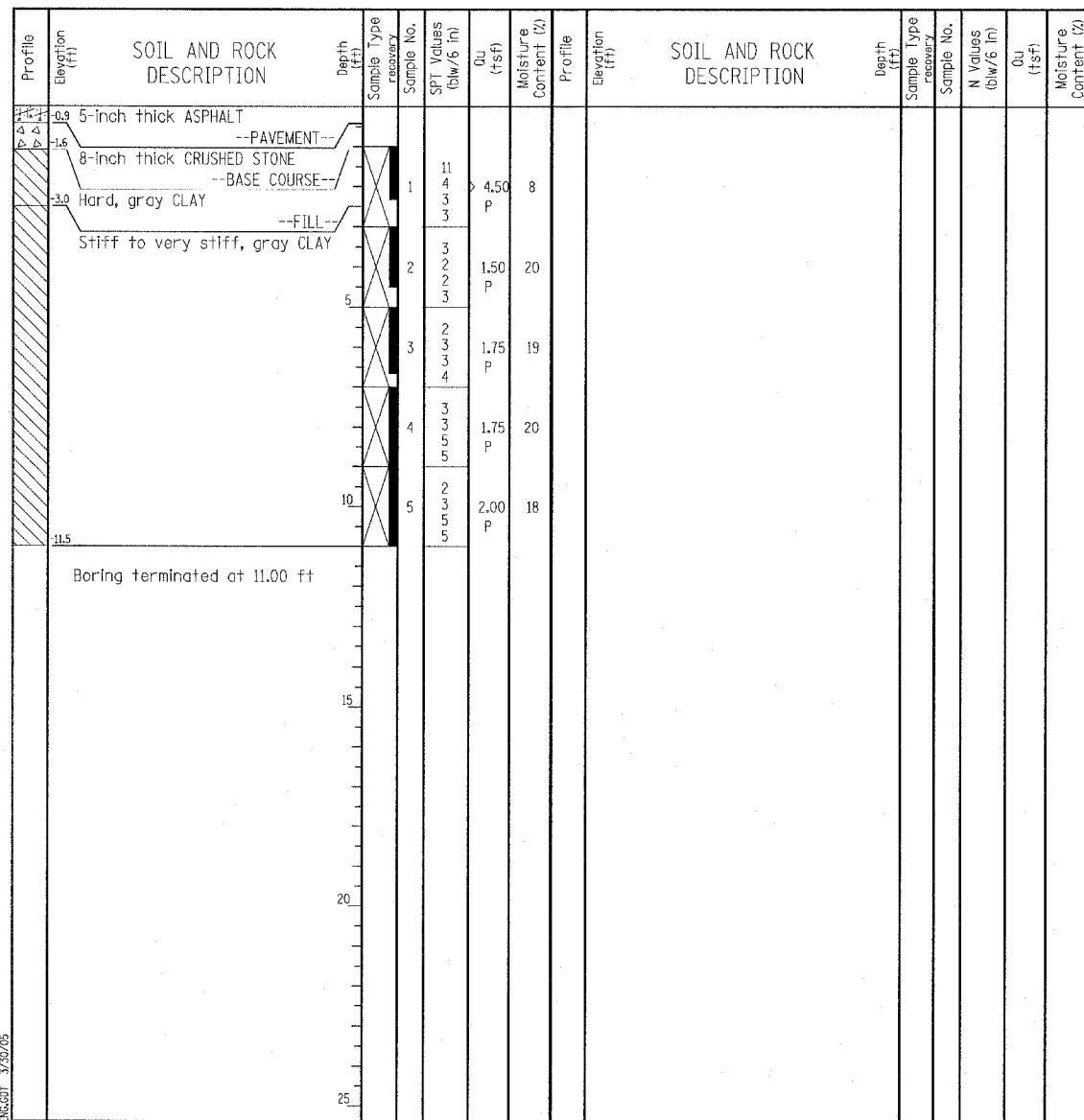
GENERAL NOTES				WATER LEVEL DATA			
Begin Drilling	06-19-2003	Complete Drilling	06-19-2003	While Drilling	∇	DRY	
Drilling Contractor	Patrick Drilling	Drill Rig	CME 75 TMR	At Completion of Drilling	∇	DRY	
Driller	J&B	Logger	S. Janowski	Time After Drilling	NA		
Checked by	MLS			Depth to Water	∇	NA	
Drilling Method 3.25" ID. HSA; Boring backfilled with bentonite upon completion				The stratification lines represent the approximate boundary between soil types; the actual transition may be gradual.			

W Wang Engineering, INC.
 Consulting Geotechnical and Environmental Engineers
 wangeng3@wangeng.com
 1145 Main Street
 Lombard, IL 60148
 Telephone: 630 953-9928
 Fax: 630 953-9938

BORING LOG P-116
 WEI Job No.: 414-07-01
 Client: T. Y. LIN International
 Project: Dan Ryan Improvements
 Location: From 95th Street to 69th Street

Datum: CCD
 Elevation: -0.49 ft
 North: 1853316.33 ft
 East: 1177350.81 ft
 Station: 1319+43.25
 Offset: 68.22 LT

Page 1 of 1



GENERAL NOTES				WATER LEVEL DATA			
Begin Drilling	06-19-2003	Complete Drilling	06-19-2003	While Drilling	∇	DRY	
Drilling Contractor	Patrick Drilling	Drill Rig	CME 75 TMR	At Completion of Drilling	∇	DRY	
Driller	J&B	Logger	S. Janowski	Time After Drilling	NA		
Checked by	MLS			Depth to Water	∇	NA	
Drilling Method 3.25" ID. HSA; Boring backfilled with bentonite upon completion				The stratification lines represent the approximate boundary between soil types; the actual transition may be gradual.			

TYLIN INTERNATIONAL

LEGEND

NP	NON-PLASTIC
B	BULGE FAILURE
S	SHEAR FAILURE
P	POCKET PENETROMETER

REVISIONS	
NAME	DATE

ILLINOIS DEPARTMENT OF TRANSPORTATION
 F.A.I. 94 (DAN RYAN EXPRESSWAY)
 BORING LOGS P-115 & P-116

S.N. _____ DESIGNED BY: DJR
 SCALE: N.T.S. DRAWN BY: DJR
 DATE: MARCH 25, 2005 CHECKED BY: DAK