

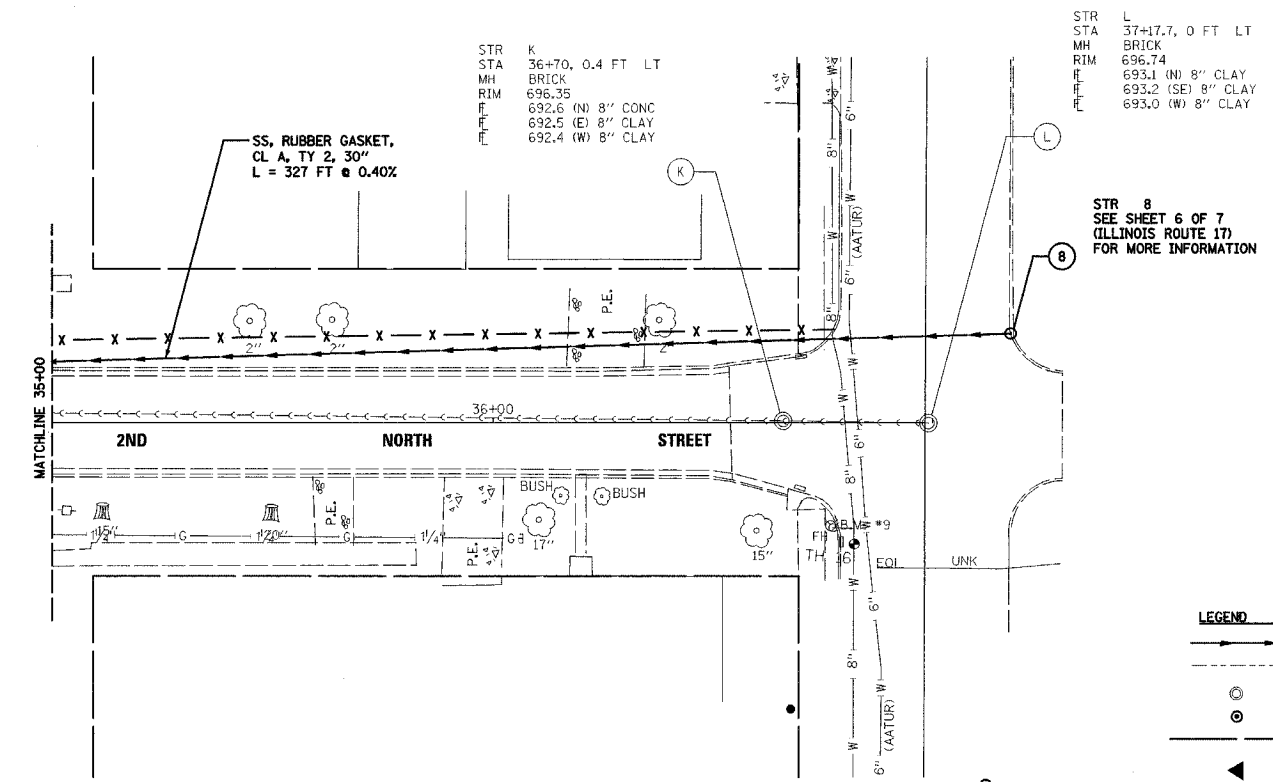
66403

F.A.P. RTE.	SECTION	COUNTY	TOTAL SHEETS	SHEET NO.
649	67(T)RS-2&I	MARSHALL	74	33
STA. 35+00		TO STA. 36+97.94		
FED. ROAD DIST. NO.	ILLINOIS FED. AID PROJECT			
D-93-053-03	CONTRACT NUMBER 66403			

PLAN	SURVEYED	DATE
	BY	
	NOTED	
	CHECKED	
	DATE	

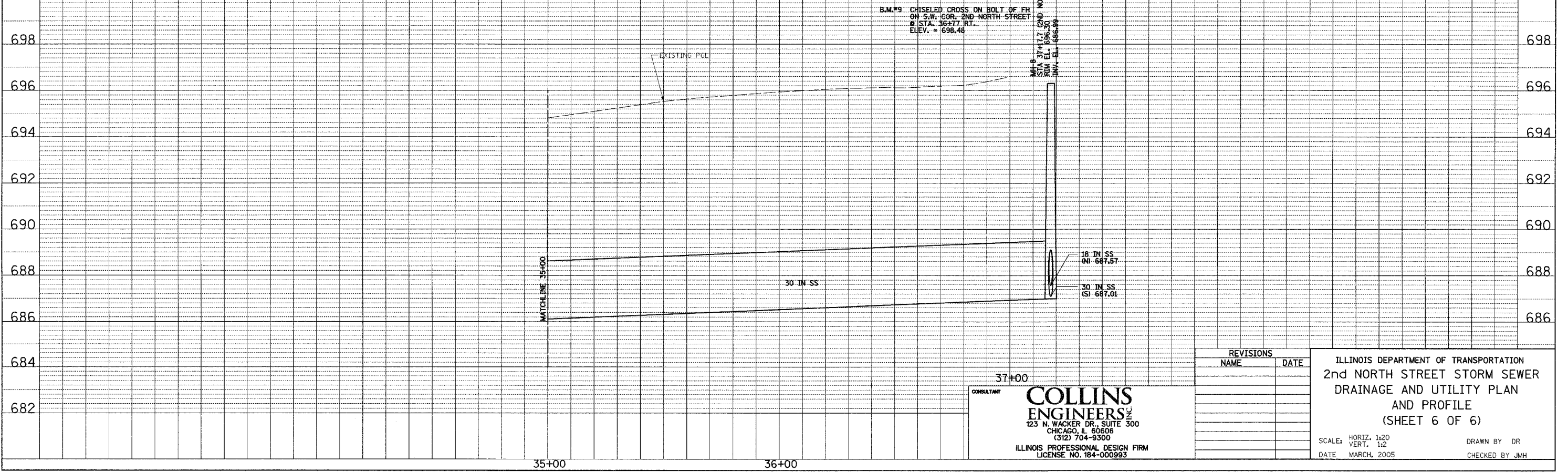
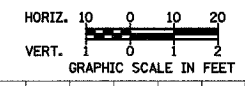
PROFILE	SURVEYED	DATE
	BY	
	NOTED	
	CHECKED	
	DATE	

FILE: g:\3846 16-16-04\shis-2nd.dgn
DATE: 29-Sep-04 11:37



LEGEND

→	PROPOSED STORM SEWER	●	PROPOSED CATCH BASIN
- - -	EXISTING DITCH	-	PROPOSED INLET
○	EXISTING MANHOLE	○	EXISTING STORM SEWER TO BE REMOVED
○	PROPOSED MANHOLE	REM	EXISTING STRUCTURE TO BE REMOVED
—	EXISTING R.O.W.	④	STRUCTURE NUMBER DESIGNATION
◀	PROPOSED CULVERT END SECTION	▭	PERIMETER EROSION BARRIER
- - -	EX STORM/COMBINED/SANITARY SEWER	- X - X -	TEMPORARY FENCE
		⊙	TEST HOLE



CONSULTANT
COLLINS ENGINEERS
123 N. WACKER DR., SUITE 300
CHICAGO, IL 60606
(312) 704-9300
ILLINOIS PROFESSIONAL DESIGN FIRM
LICENSE NO. 184-000993

REVISIONS	
NAME	DATE

ILLINOIS DEPARTMENT OF TRANSPORTATION
2nd NORTH STREET STORM SEWER
DRAINAGE AND UTILITY PLAN
AND PROFILE
(SHEET 6 OF 6)

SCALE: HORIZ. 1:20
VERT. 1:2
DATE MARCH, 2005

DRAWN BY DR
CHECKED BY JMH