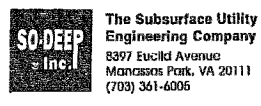


F.A.P. RTE.	SECTION	COUNTY	TOTAL SHEETS	SHEET NO.
649	677RS 212	MARSHALL	74	71
STA.	TO STA.			
FED. ROAD DIST. NO.	ILLINOIS	FED. AID PROJECT		



So-Deep Test Hole Certification Form

© So-Deep, Inc. 1988, 1991

Control # SIL9418
 Test Hole # 10
 Plan Scale 1" = 20'
 Sheet # 6 OF 10
 Proposed STORM PIPE
 Date AUGUST 20, 2004

City, County, State WENONA, IL
 Gen. Loc. W SIDE OF RTE. 17, 229' N OF 2ND SOUTH ST.
 Recorded Size/Material/Type 8" PLASTIC WATER LINE
 Foreman/Truck#/Form By M. NELSON / 2211 M. ARMSTRONG

Condition of paving prior to work ASPH. SHLDR IN GOOD CONDN

Description: (CP 1001) MAG NAIL FOUND, 15'± RT OF SURVEY CL STA. 568+642, IL RTE. 17

Description: (CP 1000) MAG NAIL FOUND, 16'± RT OF SURVEY CL STA. 573+445, IL RTE. 17

B.M. 1 Elev. = 702.16'
 is GIVEN

B.M. 2 Elev. = 697.88'
 is GIVEN

Benchmarks check -BY 0.03'
 Elevations are referenced to B.M.#2

SO-DEEP will attempt to use the BMMH most applicable to your design. If however, BMMH differ by more than .05', resulting differences could cause design conflicts.

Recorded Size/Type of utility WAS FOUND

Existing Grade of ASPH. SHLDR

Survey Mark P.K. NAIL Elev. = 700.68'

There WERE additional utilities in the test hole.

The utility WAS in good condition.

Paving Thickness and type 3" ASPH. OVER 8" CONC.

Color of ribbon installed BLUE

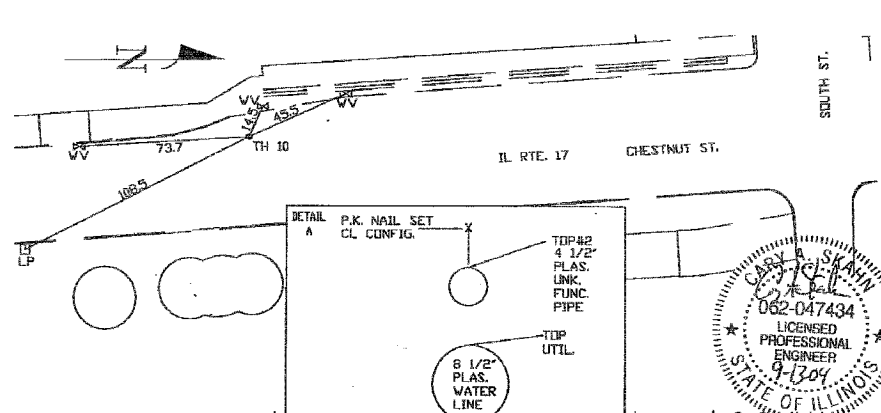
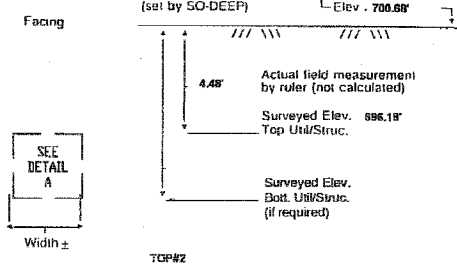
Soil Type MOIST BROWN

Field Condition ASPHALT SHOULDER

T.H. tied to P.K. NAIL

8 1/2" PLAS. WATER LINE
 Size/Material/Type
 Portion of pipe exposed for O.D. measurement: FULL

Remarks: CREW ALSO FOUND A 4 1/2" (O.D.) UNKNOWN FUNCTION PIPE RUNNING ABOVE AND PARALLEL TO THE WATER LINE. ELECTRONIC DESIGNING, TOPSIDE SURVEY, AND THE MAYOR OF WENONA COULD NOT EXPLAIN THE PRESENCE OF THIS PIPE.



- | | | | |
|---------------------------|--------------------|-----------|-----------------------------|
| RAW = Rights of Way | T.C. = Terra Cotta | 08" - 1" | ○ = Sewer Manhole |
| N.T.S. = Not to Scale | PLAS. = Plastic | 16" - 2" | ⊗ = Test Hole |
| * = Not Shown on Plan | BL. = Base Line | 24" - 3" | ⊕ = Fire Hydrant |
| PCC = Precast Concrete | ELEC. = Electric | 30" - 4" | ⊖ = Pole |
| CONC. = Concrete | TELE. = Telephone | 42" - 5" | ⊗ = Fence Line |
| CONC. = Concrete | T.H. = Test Hole | 50" - 6" | ⊗ = Electric Manhole |
| O.D. = Outside Diameter | SW = Skewer | 58" - 7" | ⊗ = T.S. = Traverse Station |
| C.I. = Cast Iron | DW = Driveway | 67" - 8" | ⊕ = Valve |
| D.I. = Ductile Iron | EM = Benchmark | 75" - 9" | ⊕ = Water Meter |
| RPC = Rough Pour Concrete | C.B. = Catch Basin | 83" - 10" | ⊕ = Telephone Manhole |
| CL = Centerline | GV = Gas Valve | 92" - 11" | ⊕ = Telephone Pedestal |

Performing out-of-sight work...with vision!SM
 Note: To Eliminate mistakes and check this work, So-Deep suggests you scale and plot all dimensions onto the plans and review all elevations carefully. So-Deep is responsible only for information shown on our forms.



So-Deep Test Hole Certification Form

© So-Deep, Inc. 1988, 1991

Control # SIL9418
 Test Hole # 11
 Plan Scale 1" = 20'
 Sheet # 6 OF 10
 Proposed STORM PIPE
 Date AUGUST 20, 2004

City, County, State WENONA, IL
 Gen. Loc. INTER OF IL RTE. 17 & 1ST SOUTH ST.
 Recorded Size/Material/Type 6" UNK. TYPE WATER LINE & 2" COATED STEEL GAS LINE
 Foreman/Truck#/Form By M. NELSON / 2211 M. ARMSTRONG

Condition of paving prior to work ASPHALT RDWY IN GOOD CONDN

Description: (CP 1001) MAG NAIL FOUND, 15'± RT OF SURVEY CL STA. 568+642, IL RTE. 17

Description: (CP 1000) MAG NAIL FOUND, 16'± RT OF SURVEY CL STA. 573+445, IL RTE. 17

B.M. 1 Elev. = 702.16'
 is GIVEN

B.M. 2 Elev. = 697.88'
 is GIVEN

Benchmarks check -BY 0.03'
 Elevations are referenced to B.M.#2

SO-DEEP will attempt to use the BMMH most applicable to your design. If however, BMMH differ by more than .05', resulting differences could cause design conflicts.

Recorded Size/Type of utility WAS FOUND

Existing Grade of ASPHALT RDWY

Survey Mark P.K. NAIL Elev. = 702.04'

There WERE NOT additional utilities in the test hole.

The utility WAS in good condition.

Paving Thickness and type 1" ASPH. OVER 8" CONC.

Color of ribbon installed BLUE AND YELLOW

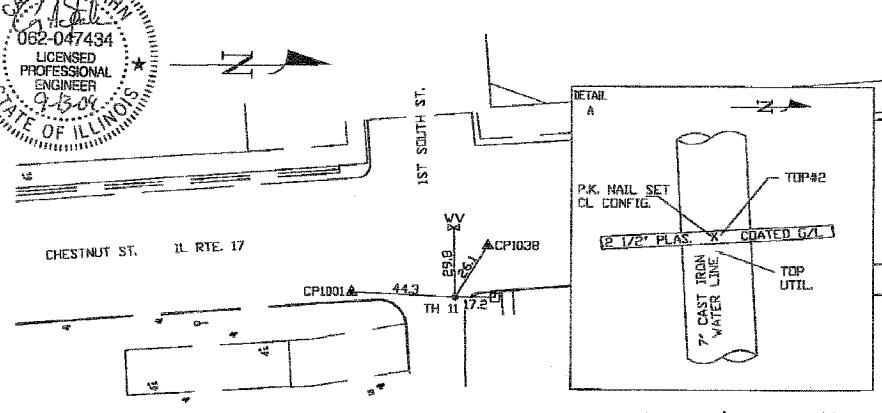
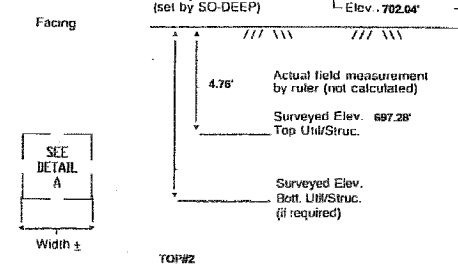
Soil Type MOIST BROWN

Field Condition LIGHT ROAD TRAFFIC

T.H. tied to P.K. NAIL

7" C.I. WR. AND 2 1/2" PLA. CTD STL GAS LINE
 Size/Material/Type
 Portion of pipe exposed for O.D. measurement: FULL

Remarks: NONE



- | | | | |
|---------------------------|--------------------|-----------|-----------------------------|
| RAW = Rights of Way | T.C. = Terra Cotta | 08" - 1" | ○ = Sewer Manhole |
| N.T.S. = Not to Scale | PLAS. = Plastic | 16" - 2" | ⊗ = Test Hole |
| * = Not Shown on Plan | BL. = Base Line | 24" - 3" | ⊕ = Fire Hydrant |
| PCC = Precast Concrete | ELEC. = Electric | 30" - 4" | ⊖ = Pole |
| CONC. = Concrete | TELE. = Telephone | 42" - 5" | ⊗ = Fence Line |
| CONC. = Concrete | T.H. = Test Hole | 50" - 6" | ⊗ = Electric Manhole |
| O.D. = Outside Diameter | SW = Skewer | 58" - 7" | ⊗ = T.S. = Traverse Station |
| C.I. = Cast Iron | DW = Driveway | 67" - 8" | ⊕ = Valve |
| D.I. = Ductile Iron | EM = Benchmark | 75" - 9" | ⊕ = Water Meter |
| RPC = Rough Pour Concrete | C.B. = Catch Basin | 83" - 10" | ⊕ = Telephone Manhole |
| CL = Centerline | GV = Gas Valve | 92" - 11" | ⊕ = Telephone Pedestal |

Performing out-of-sight work...with vision!SM
 Note: To Eliminate mistakes and check this work, So-Deep suggests you scale and plot all dimensions onto the plans and review all elevations carefully. So-Deep is responsible only for information shown on our forms.



So-Deep Test Hole Certification Form

© So-Deep, Inc. 1988, 1991

Control # SIL9418
 Test Hole # 12
 Plan Scale 1" = 20'
 Sheet # 6 OF 10
 Proposed STORM PIPE
 Date AUGUST 20, 2004

City, County, State WENONA, IL
 Gen. Loc. W SIDE OF RTE. 17, 192' N OF 1ST SOUTH ST.
 Recorded Size/Material/Type 8" PLASTIC WATER LINE
 Foreman/Truck#/Form By M. NELSON / 2211 M. ARMSTRONG

Condition of paving prior to work ASPH. SHLDR IN GOOD CONDN

Description: (CP 1001) MAG NAIL FOUND, 15'± RT OF SURVEY CL STA. 568+642, IL RTE. 17

Description: (CP 1000) MAG NAIL FOUND, 16'± RT OF SURVEY CL STA. 573+445, IL RTE. 17

B.M. 1 Elev. = 702.16'
 is GIVEN

B.M. 2 Elev. = 697.88'
 is GIVEN

Benchmarks check -BY 0.03'
 Elevations are referenced to B.M.#2

SO-DEEP will attempt to use the BMMH most applicable to your design. If however, BMMH differ by more than .05', resulting differences could cause design conflicts.

Recorded Size/Type of utility WAS FOUND

Existing Grade of ASPHALT RDWY

Survey Mark P.K. NAIL Elev. = 700.55'

There WERE NOT additional utilities in the test hole.

The utility WAS in good condition.

Paving Thickness and type 3" ASPH. OVER 8" CONC.

Color of ribbon installed BLUE

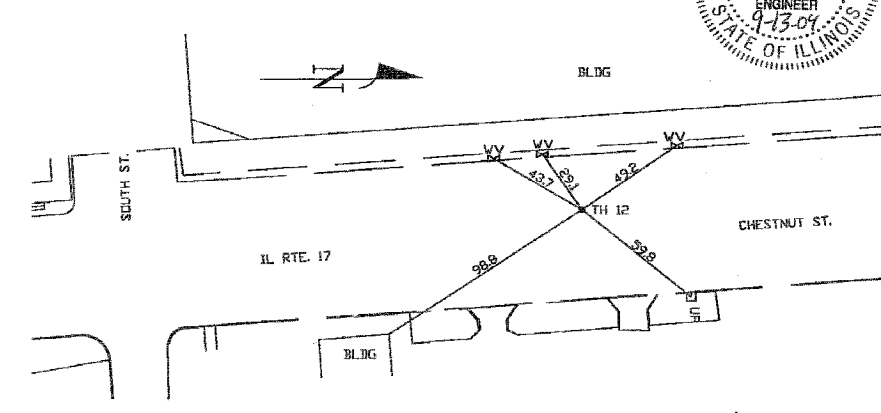
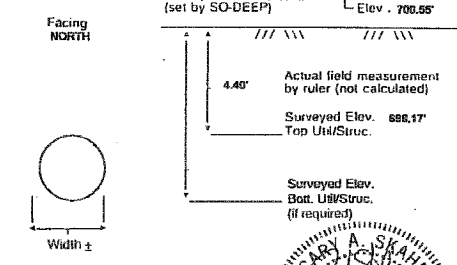
Soil Type MOIST BROWN

Field Condition ASPHALT ROADWAY

T.H. tied to P.K. NAIL

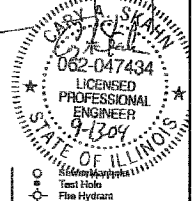
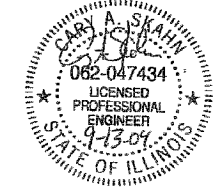
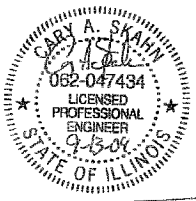
8 1/2" PLAS. WATER LINE
 Size/Material/Type
 Portion of pipe exposed for O.D. measurement: FULL

Remarks: NONE



- | | | | |
|---------------------------|--------------------|-----------|-----------------------------|
| RAW = Rights of Way | T.C. = Terra Cotta | 08" - 1" | ○ = Sewer Manhole |
| N.T.S. = Not to Scale | PLAS. = Plastic | 16" - 2" | ⊗ = Test Hole |
| * = Not Shown on Plan | BL. = Base Line | 24" - 3" | ⊕ = Fire Hydrant |
| PCC = Precast Concrete | ELEC. = Electric | 30" - 4" | ⊖ = Pole |
| CONC. = Concrete | TELE. = Telephone | 42" - 5" | ⊗ = Fence Line |
| CONC. = Concrete | T.H. = Test Hole | 50" - 6" | ⊗ = Electric Manhole |
| O.D. = Outside Diameter | SW = Skewer | 58" - 7" | ⊗ = T.S. = Traverse Station |
| C.I. = Cast Iron | DW = Driveway | 67" - 8" | ⊕ = Valve |
| D.I. = Ductile Iron | EM = Benchmark | 75" - 9" | ⊕ = Water Meter |
| RPC = Rough Pour Concrete | C.B. = Catch Basin | 83" - 10" | ⊕ = Telephone Manhole |
| CL = Centerline | GV = Gas Valve | 92" - 11" | ⊕ = Telephone Pedestal |

Performing out-of-sight work...with vision!SM
 Note: To Eliminate mistakes and check this work, So-Deep suggests you scale and plot all dimensions onto the plans and review all elevations carefully. So-Deep is responsible only for information shown on our forms.



REVISIONS	
NAME	DATE

ILLINOIS DEPARTMENT OF TRANSPORTATION

ILLINOIS ROUTE 17 AND
 2ND NORTH STREET
 TEST HOLE CERTIFICATION FORMS

COLLINS ENGINEERS
 123 N. WACKER DR., SUITE 300
 CHICAGO, IL 60606
 (312) 704-9300
 ILLINOIS PROFESSIONAL DESIGN FIRM
 LICENSE NO. 184-000993

SCALE: NTS
 DATE: MARCH, 2005
 DRAWN BY: DR
 CHECKED BY: JMH