

F.A.U. RTE.	SECTION	COUNTY	TOTAL SHEETS	SHEET NO.
8012		SANGAMON	13	12

STA.	TO STA.

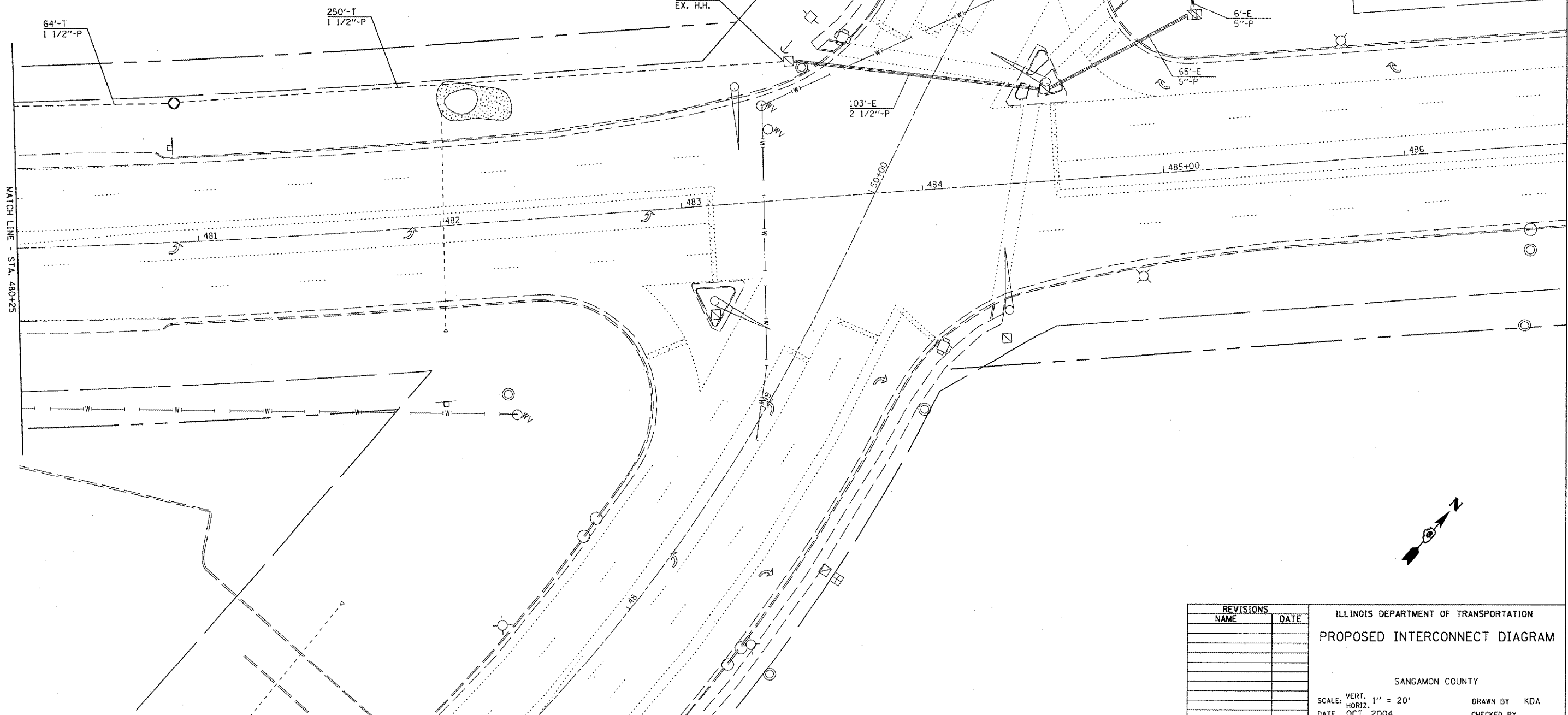
FED. ROAD DIST. NO. ILLINOIS FED. AID PROJECT

D-6 MISC TRAFFIC CONTROL 2006

TRAFFIC SIGNAL QUANTITIES

QUANTITY	UNIT	ITEM
314.0	FOOT	CONDUIT IN TRENCH, 1 1/2" DIA., PVC
1	EACH	JUNCTION BOX (SPECIAL)
314.0	FOOT	TRENCH AND BACKFILL FOR ELECTRICAL WORK
518.5	FOOT	FIBER OPTIC CABLE IN CONDUIT, NO. 62.5/125, 6F
1	EACH	DRILL EXISTING HANDHOLE

CONTRACTOR SHOULD VERIFY EXISTING CONDUIT LENGTHS AND PULL POINTS PRIOR TO ORDERING CABLE. CONDUIT SHOWN IS BASED UPON HISTORICAL DATA.



MATCH LINE - STA. 480+25

REVISIONS	
NAME	DATE

ILLINOIS DEPARTMENT OF TRANSPORTATION  
**PROPOSED INTERCONNECT DIAGRAM**  
 SANGAMON COUNTY  
 SCALE: VERT. 1" = 20'  
 HORIZ. 1" = 20'  
 DATE OCT. 2004  
 DRAWN BY KDA  
 CHECKED BY

PLOT DATE = 2/16/2005  
 FILE NAME = C:\p\projects\4859495\vs\_always.dgn  
 PLOT SCALE = 433795 / IN.  
 REFERENCE = WIER