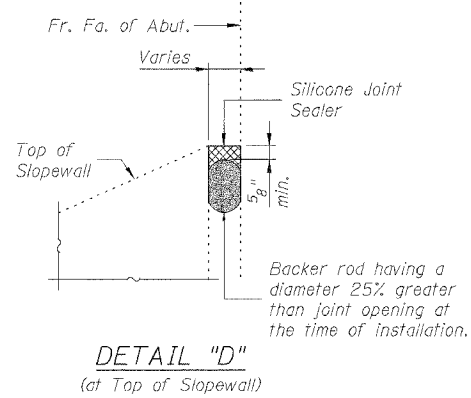


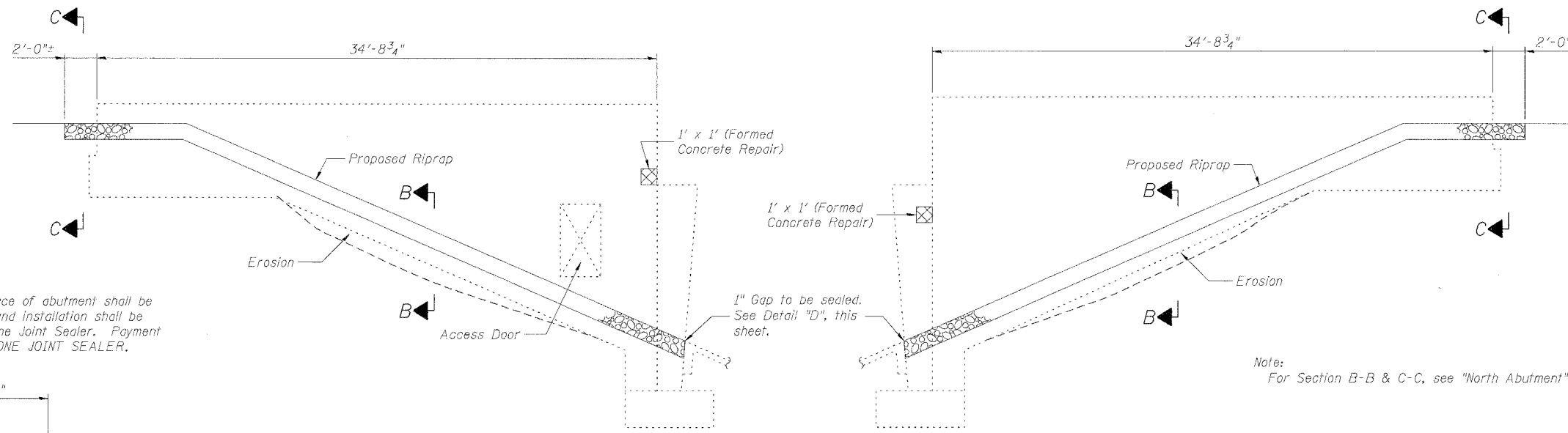
STATE OF ILLINOIS
DEPARTMENT OF TRANSPORTATION

SHEET 8
OF 8

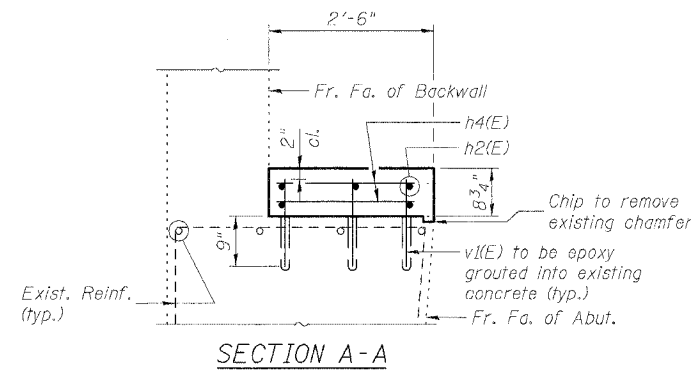
F.A.I. RTE.	SECTION	COUNTY	TOTAL SHEETS	SHEET NO.
64	82-7RS-1, 82-7HB-1, 2I	ST. CLAIR	89	77
FED. ROAD DIST. NO.	ILLINOIS	FED. AID PROJECT		
CONTRACT NO. 76813				



Note:
The gap between the top of slopewall and the front face of abutment shall be sealed for the full length of the abutment. Materials and installation shall be generally according to the Special Provisions for Silicone Joint Sealer. Payment shall be at the contract unit price per foot for SILICONE JOINT SEALER.

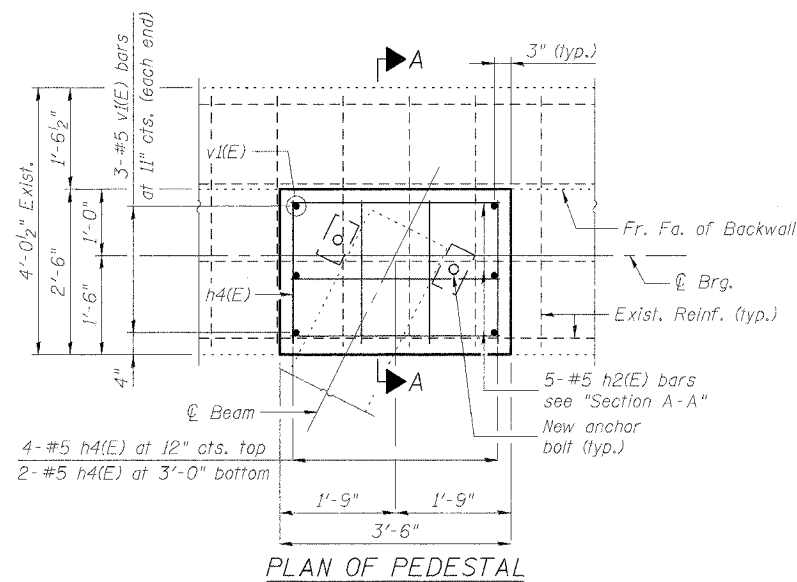
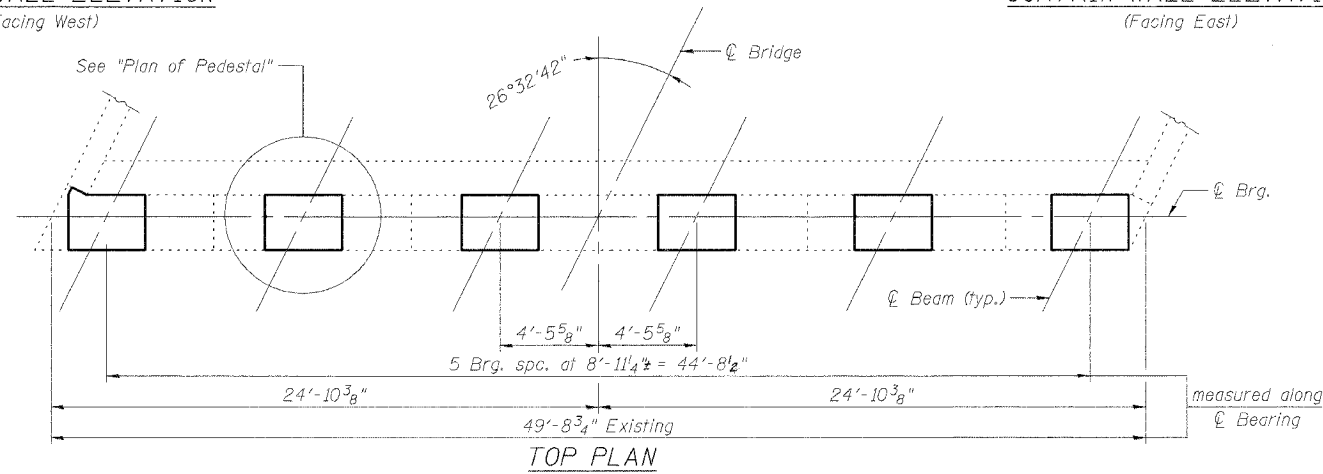


Note:
For Section B-B & C-C, see "North Abutment" sheet.



CURTAIN WALL ELEVATION
(Facing West)

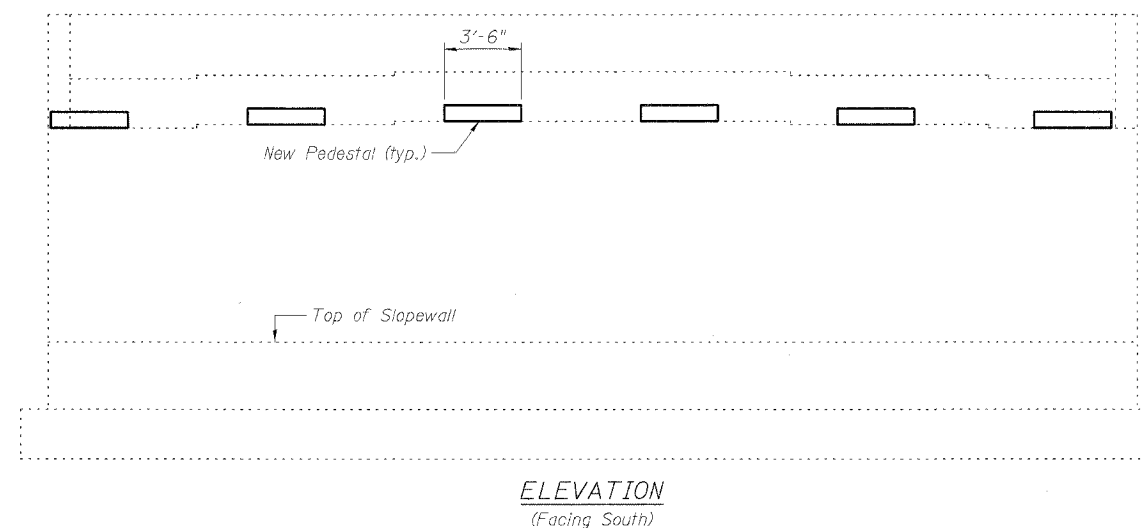
CURTAIN WALL ELEVATION
(Facing East)



BILL OF MATERIAL

Bar	No.	Size	Length	Shape	
h2(E)	30	#5	3'-2"		
h4(E)	36	#5	2'-2"		
v1(E)	36	#5	1'-4"		
Concrete Structures				Cu. Yd.	1.4
Reinforcement Bars, Epoxy Coated				Pound	240
Bridge Seat Sealer				Sq. Ft.	124
Formed Concrete Repair (Depth = < 5")				Sq. Ft.	2
Silicone Joint Sealer				Foot	50
Stone Riprap, Class A1				Ton	32
Stone Riprap, Class A3				Ton	29
Filter Fabric for use with Riprap				Sq. Yd.	115

Reinforcement Bars designated (E) shall be epoxy coated.



SOUTH ABUTMENT
N. MAIN STREET (FAS 844) OVER
INTERSTATE 64
F.A.I. 64 SEC. 82-7RS-1, 82-7HB-1, 2I
ST. CLAIR COUNTY
STATION 883+53.16
STRUCTURE NO. 082-0182

Johnson, Depp & Quisenberry
CONSULTING ENGINEERS
Springfield, Illinois

DESIGNED: CDB	DRAWN: P. Ray
CHECKED: DCD	CHECKED: CDB/DCD