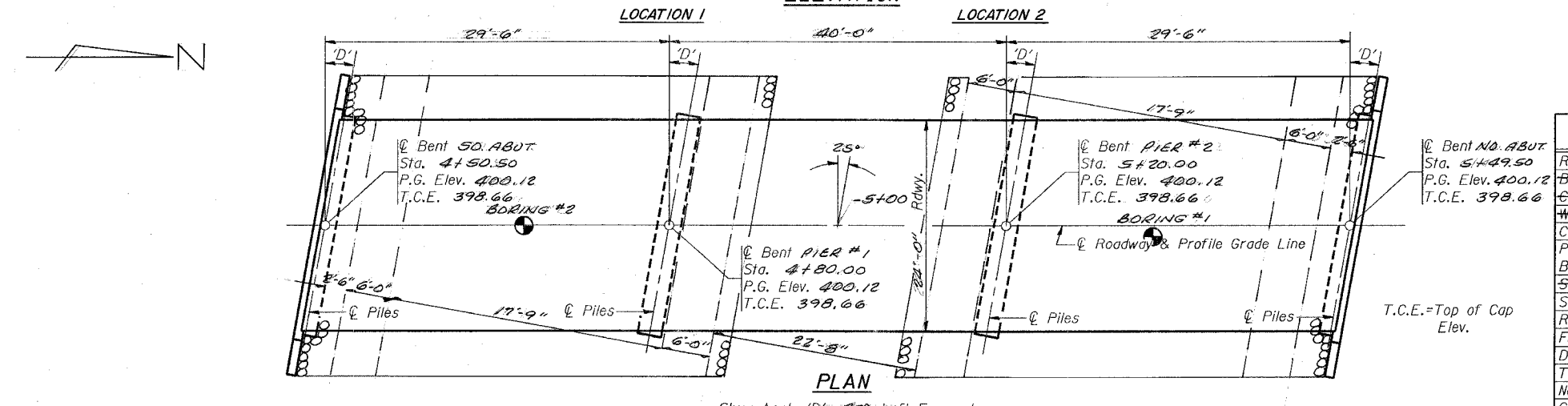
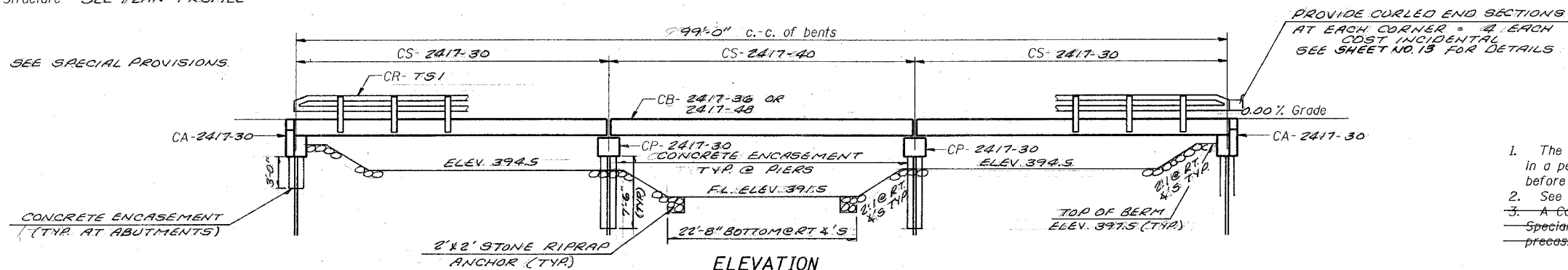


SECTION	97-09110-00-BR	TOTAL SHEETS	14	SHEET NO.	6
COUNTY	WAYNE	ROAD DIST.	GROVER	STA.	TO STA.
CONTRACT # 95385					

B.M. - SEE PLAN-PROFILE

Existing Structure - SEE PLAN-PROFILE

Salvage - SEE SPECIAL PROVISIONS.



**GENERAL NOTES**

1. The Contractor shall drive 2 test piles, as specified, in a permanent location as directed by the Engineer before ordering the remaining piles.
2. See Special Provisions for boring logs.
3. A Calcium Nitrite Corrosion Inhibitor, as covered in the Special Provisions, shall be used in the concrete for precast prestressed concrete deck beams.

**TOTAL BILL OF MATERIAL**

Item	Unit	Super	Sub.		Total
			Piers	Abuts.	
Removal of Existing Structures	Each				1
Bituminous Concrete Surface Course, Class I	Ton				
Waterproofing Membrane System	Sq. Yd.				
Concrete Structures	Cu. Yd.		14.2	19.4	33.6
Precast Prestressed Concrete Deck Beams (17" Depth)	Sq. Ft.	2400			2400
Steel Bridge Rail, Type SM	Foot				
Steel Railing, Type S-1	Foot	200			200
Reinforcement Bars	Pound		1700	2160	3860
Furnishing Steel Piles HP10X42	Foot		413	413	826
Driving Steel Piles	Foot		413	413	826
Test Pile Steel HP10X42	Each		1	1	2
Name Plates	Each				1
Class II Concrete Encasement	Cu. Yd.		5.2	2.1	7.3
STONE DUMPED RIPRAP CL A-4	TON				150

**NOTE:**  
The Article or Section numbers referencing the Standard Specifications for Road and Bridge Construction as shown on the standard bridge plan sheets included with the contract plans should be interpreted as referring to the current edition of the Standard Specification (Adopted January 1, 1997) as shown in the "Article/Section No. Reference Table".

Previous No.	Current No.
504.05	504.06
505.04	505.04
706.05	1006.05
706.32	1006.32
760.07	1060.07

**SEISMIC DATA**

Seismic Performance Category (SPC) = B  
Bedrock Acceleration Coefficient A = 0.093  
Site Coefficient S = 1.0

**PILE DATA (2-PIERS)**

Type Steel HP 10X42  
Capacity Drive to Refusal  
Estimated Length 59 Feet  
Number Required 8 (Includes 1 Test Pile located in Pier # 2)

**PILE DATA (2-ABUTS.)**

Type Steel HP 10X42  
Capacity Drive to Refusal  
Estimated Length 59 Feet  
Number Required 8 (Includes 1 Test Pile located in So. Abut.)

**DESIGN SPECIFICATIONS**

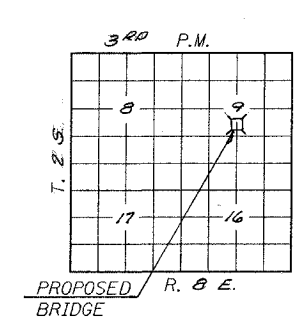
1996 AASHTO, HS20-44 Loading, Load Factor Design.

STONE DUMPED RIPRAP CL A-4 = 150 TONS  
12" MIN. THICKNESS (SEE SPECIAL PROVISIONS)

STATION 5+00  
JOHNSON CREEK  
SEC. 97-09110-00-BR BUILT 200  
GROVER ROAD DIST.  
WAYNE COUNTY  
LOADING HS20  
STR. NO. 096-3432

**LETTERING FOR NAME PLATE**

Locate Name Plate at SOUTHEAST Corner of Bridge (See Std. CN)



**LOCATION SKETCH**

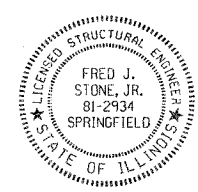
**WATERWAY INFORMATION**

Drainage Area = 7.52 SQ. MI. Low Grade Elev. = 398.55 @ Sta. 8+50									
Flood	Freq. Yr.	C.F.S.	Opening Sq. Ft.		Nat. H.W.E.	Head - Ft.		Headwater El.	
Design	15	1691	Exist.	Prop.	Exist.	Prop.	Exist.	Prop.	
Base	100	2731	28,300	28,300	397.5	1.3	0.9	398.8	398.4
Overtopping			28,300	28,300	398.2	1.0	0.8	399.2	399.0
Max. Calc.	500								

**GENERAL PLAN & ELEVATION**

T.R. ROUTE 456  
OVER JOHNSON CREEK  
SECTION 97-09110-00-BR  
WAYNE COUNTY  
STATION 5+00

I certify that to the best of my knowledge, information and belief, the special components designed for use with the standard bridge plans are structurally adequate for the design loadings shown on the plans and comply with the requirements of the current "AASHTO Standard Specifications for Highway Bridges."



Fred J. Stone, Jr. (10-30-03)  
ILLINOIS STRUCTURAL NO. 2934  
EXPIRES 11-30-04