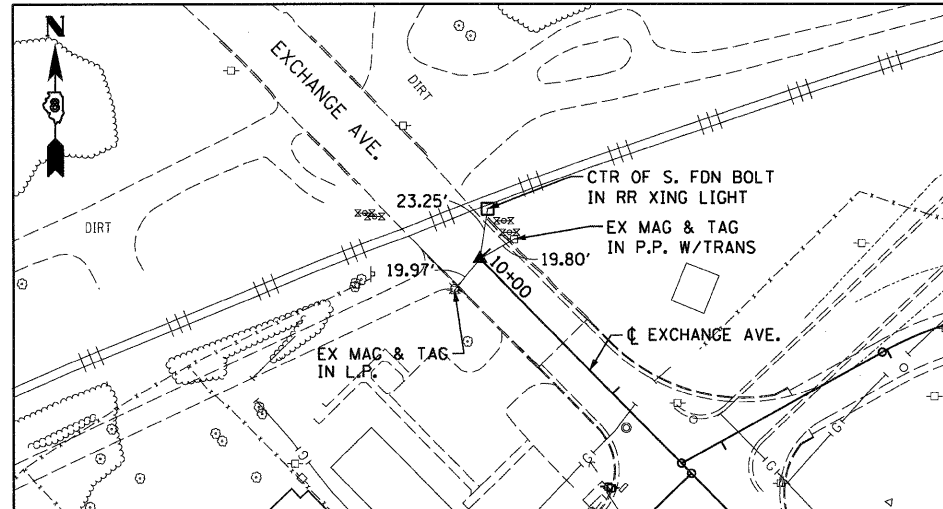
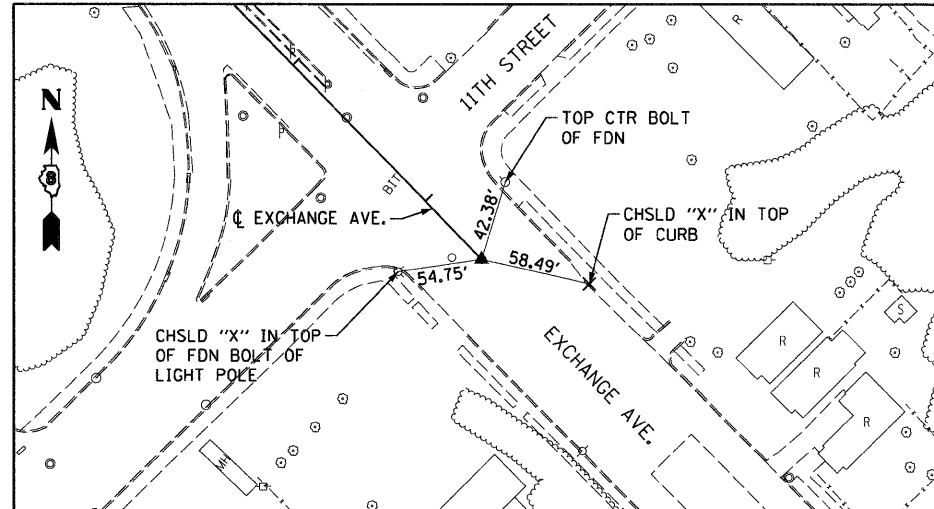


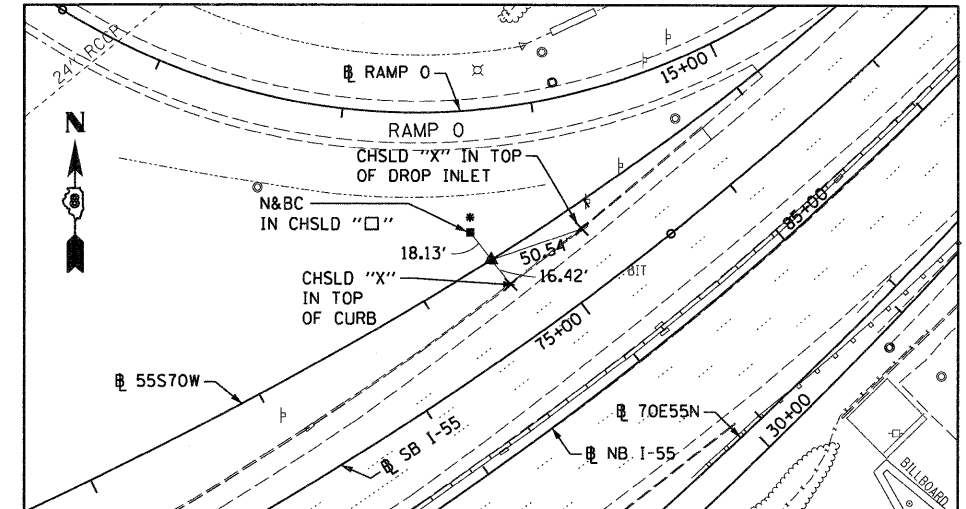
EXCHANGE AVENUE
POT STA 10+00.00
SET MEG NAIL IN CONC. CRACK W/CHSLD "X"
(CONTROL POINT MAY NEED TO BE RE-ESTABLISHED DUE TO CONSTRUCTION ACTIVITY.)



EXCHANGE AVENUE
POT STA 27+42.42
SET MEG NAIL IN CHSLD "□" W/CHSLD "X"

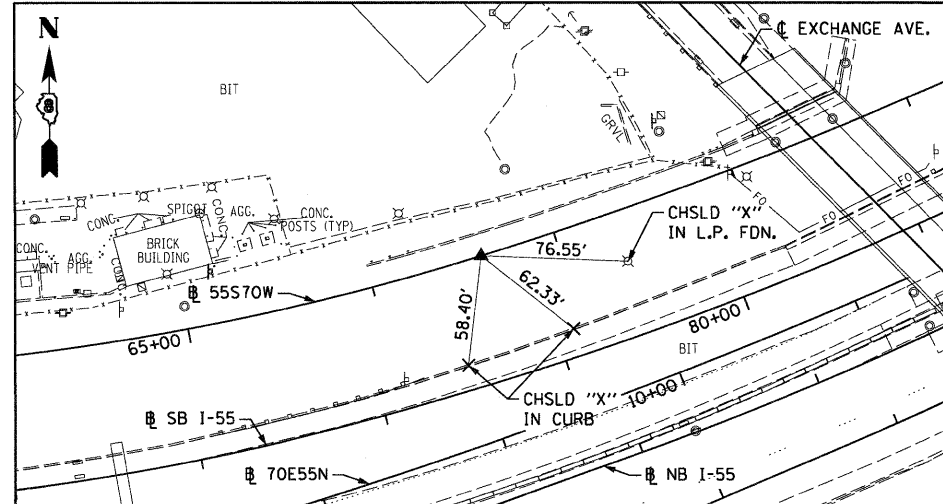


55S70W
PCC STA 57+58.25
SET 5/8" REBAR W/RED CAP FLUSH W/GR



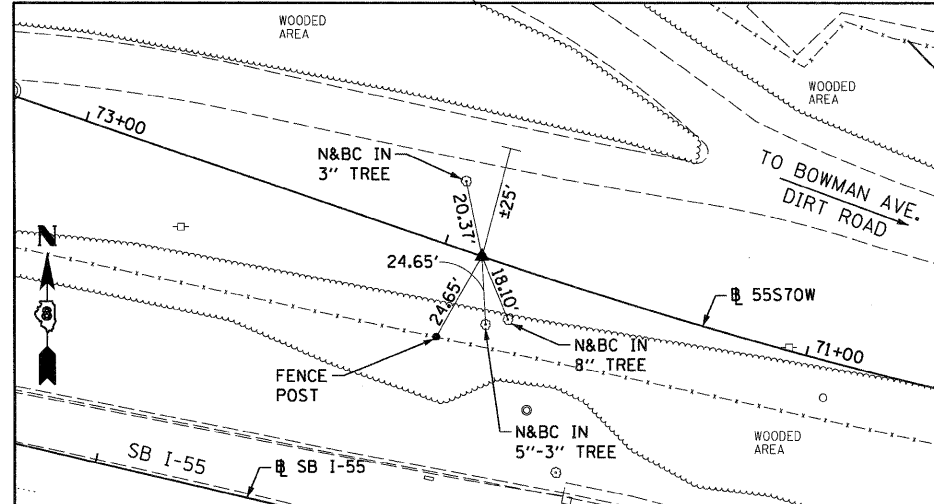
* POINT NOT AVAILABLE

55S70W
PCC STA 63+40.22
SET 5/8" REBAR W/RED LINENG CAP FLUSH W/GR
(CONTROL POINT MAY NEED TO BE RE-ESTABLISHED DUE TO CONSTRUCTION ACTIVITY.)

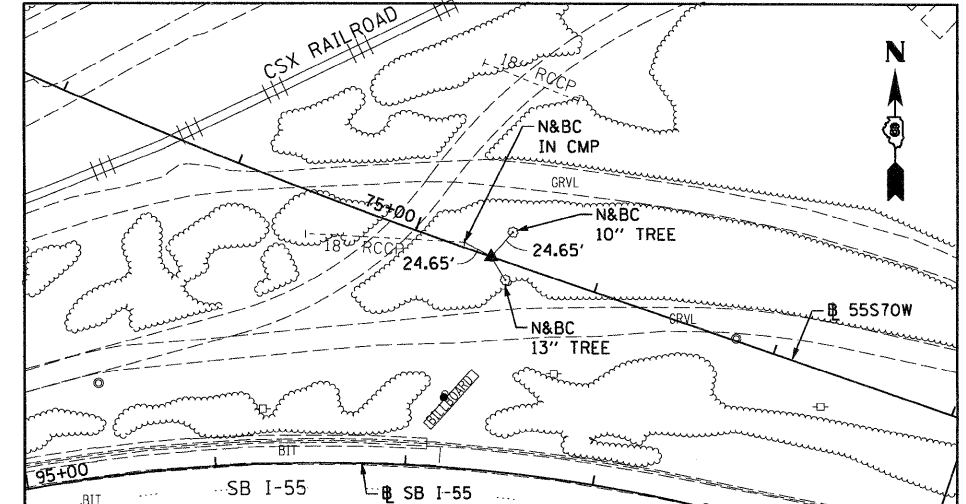


CONTROL POINT MAY NEED TO BE RE-ESTABLISHED DUE TO CONSTRUCTION ACTIVITY.

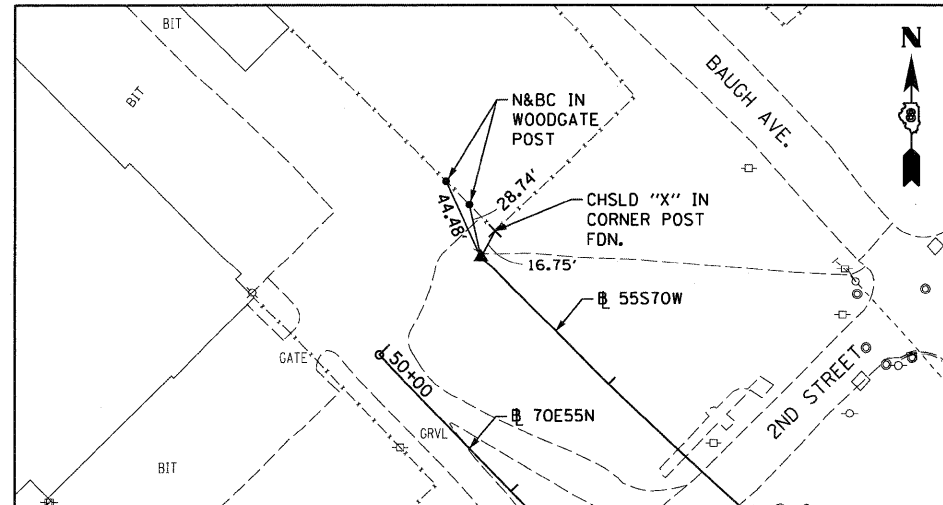
55S70W
PT STA 71+89.66
SET 5/8" REBAR W/RED CAP FLUSH W/GR



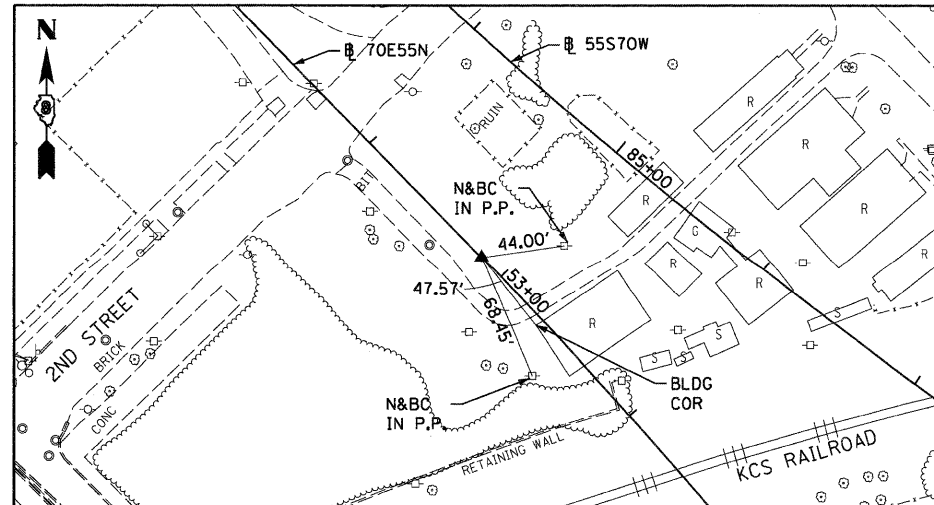
55S70W
PC STA 74+57.77
SET 5/8" REBAR W/RED LIN TRAV. PT CAP



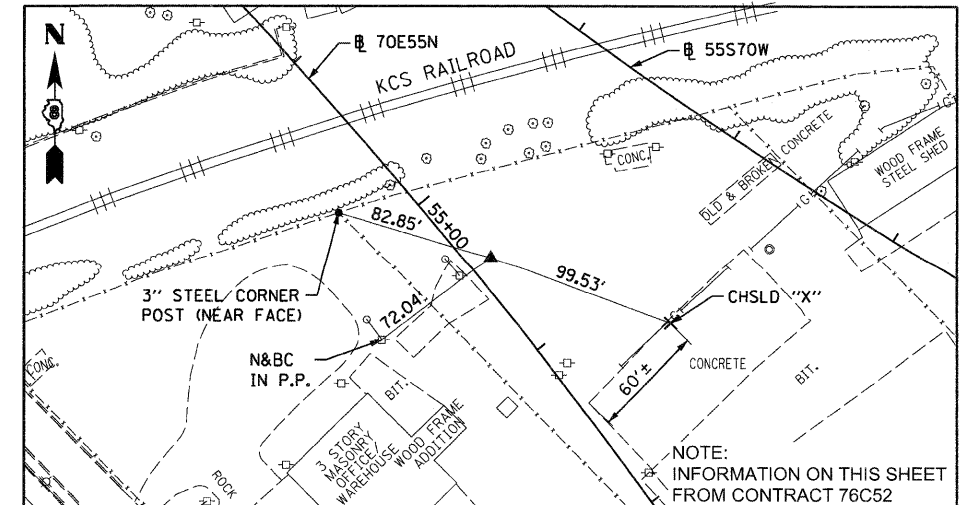
55S70W
PT STA 87+95.40
SET 5/8" REBAR W/RED LIN ENG. CAP FLUSH W/GR



70E55N
PC STA 52+85.08
5/8" I. PIN W/YELLOW CAP



70E55N
PI STA 55+46.88
5/8" I. PIN W/YELLOW CAP



NOTE:
 INFORMATION ON THIS SHEET
 FROM CONTRACT 76C52

FILE NAME = DBTR1-76C52-sh1-ATB-08.dgn

USER NAME = searsb

DESIGNED OP

REVISED -

PLOT SCALE = 100.0000' / 1"

DRAWN PHP

REVISED -

PLOT DATE = 1/24/2012

CHECKED DBM

REVISED -

DATE 1-20-12

REVISED -

STATE OF ILLINOIS
DEPARTMENT OF TRANSPORTATION

ALIGNMENT, TIES AND BENCHMARKS

SCALE: NONE SHEET NO. 8 OF 9 SHEETS STA. TO STA.

F.A.I. RTE.	SECTION	COUNTY	TOTAL SHEETS	SHEET NO.
55/70	82-1LS	ST. CLAIR	38	12
CONTRACT NO. 76F37				

FED. ROAD DIST. NO. ILLINOIS FED. AID PROJECT