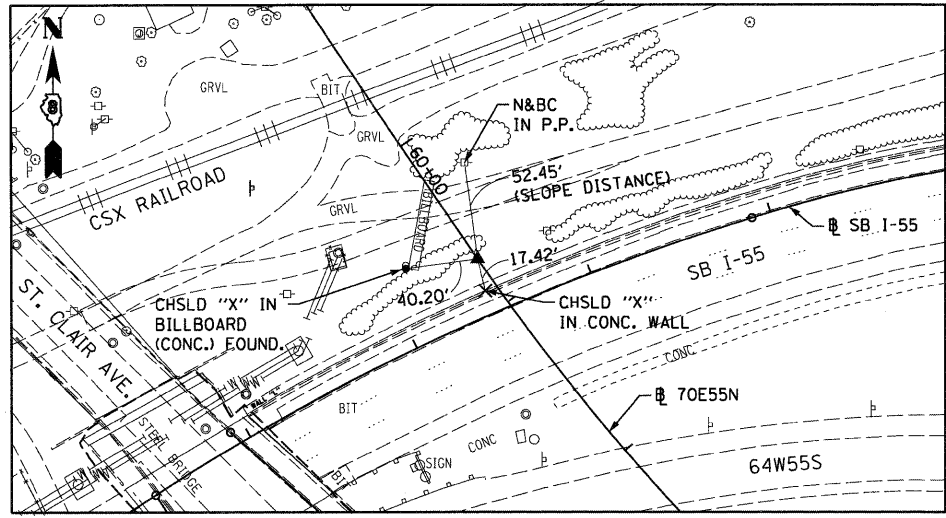
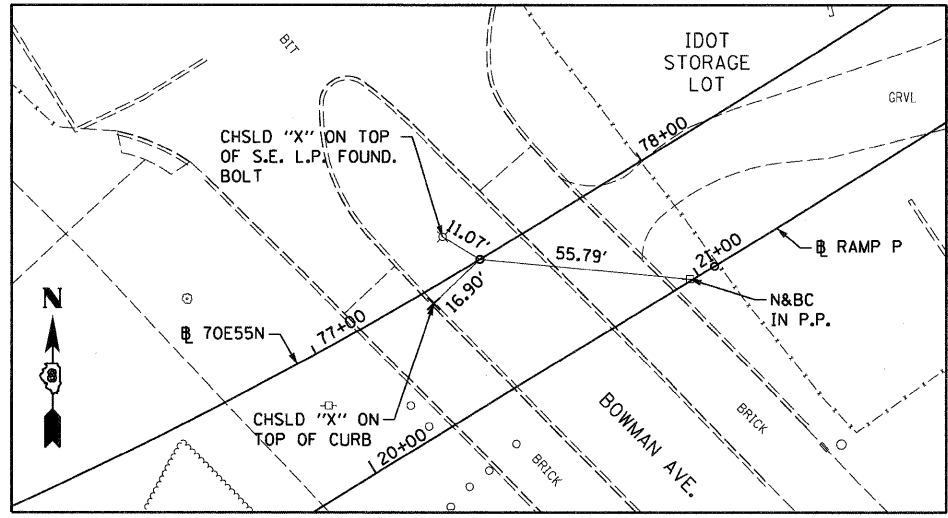


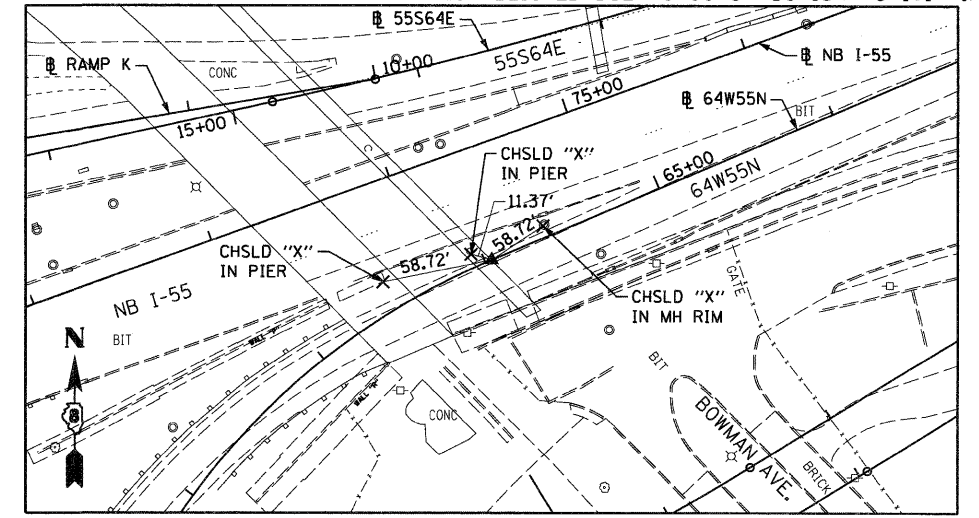
70E55N  
PC 60+72.28  
5/8" I. PIN W/YELLOW CAP



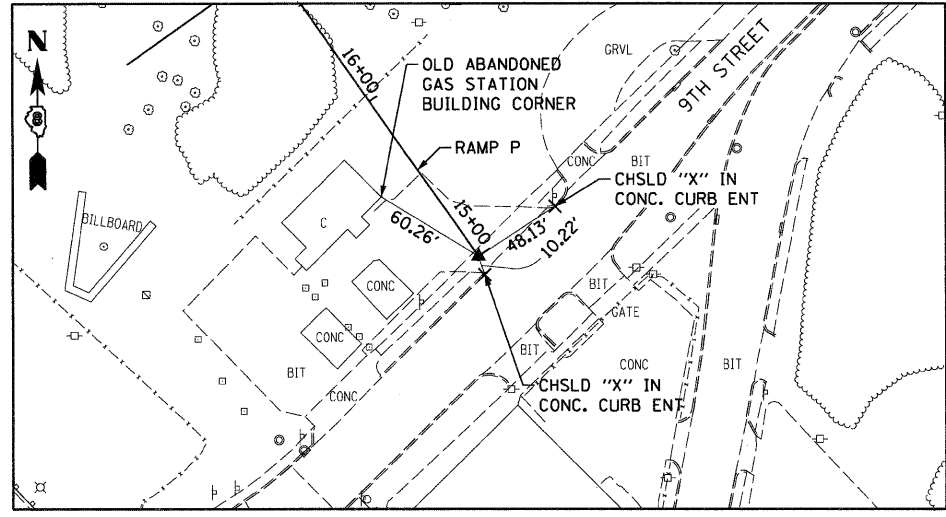
70E55N  
PC 77+49.99  
5/8" I. PIN



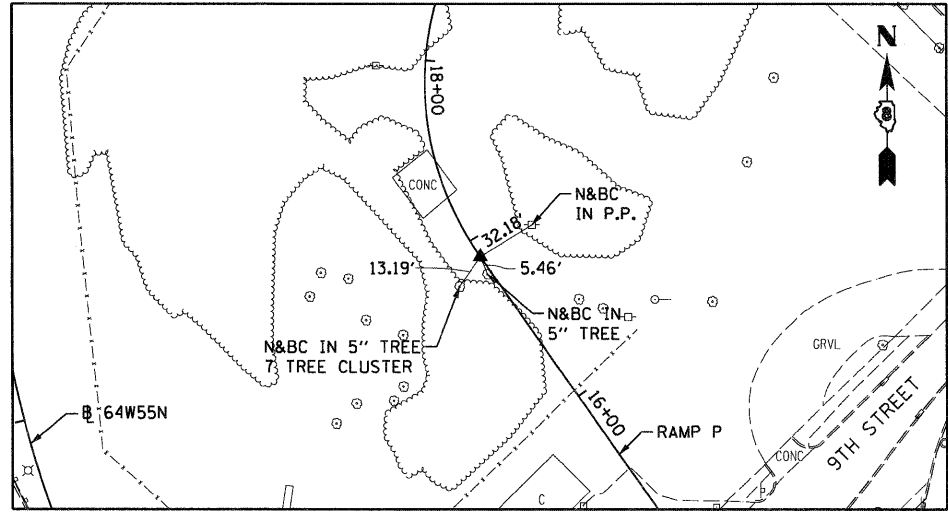
64W55N  
P.T. STA 64+03.55  
SET MAG NAIL IN CHSLD "X" W/CHSLD "X"  
(CONTROL POINT MAY NEED TO BE RE-ESTABLISHED DUE TO CONSTRUCTION ACTIVITY.)



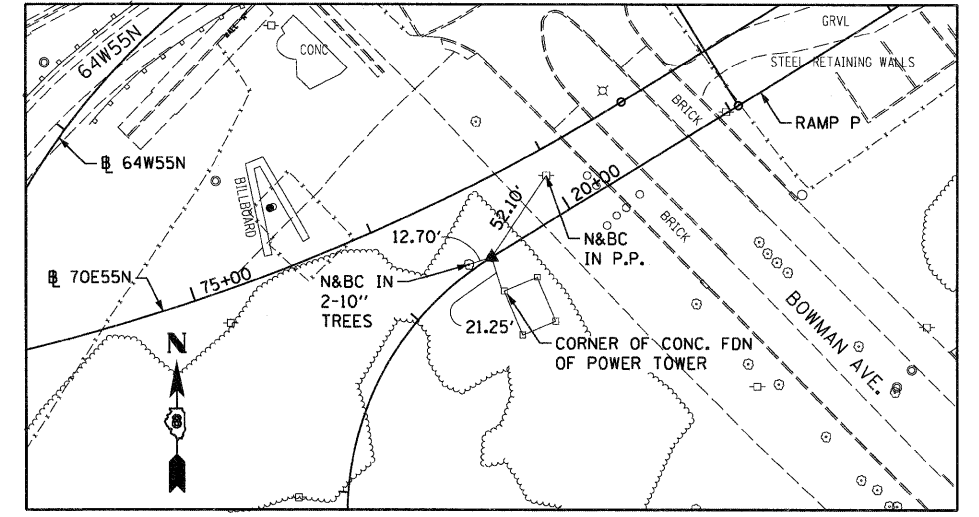
RAMP P  
POT STA 15+00 = 520+44.97 (BAUGH)  
SET MAG NAIL IN CONC. WITH CHISELLED "+"  
(CONTROL POINT MAY NEED TO BE RE-ESTABLISHED DUE TO CONSTRUCTION ACTIVITY.)



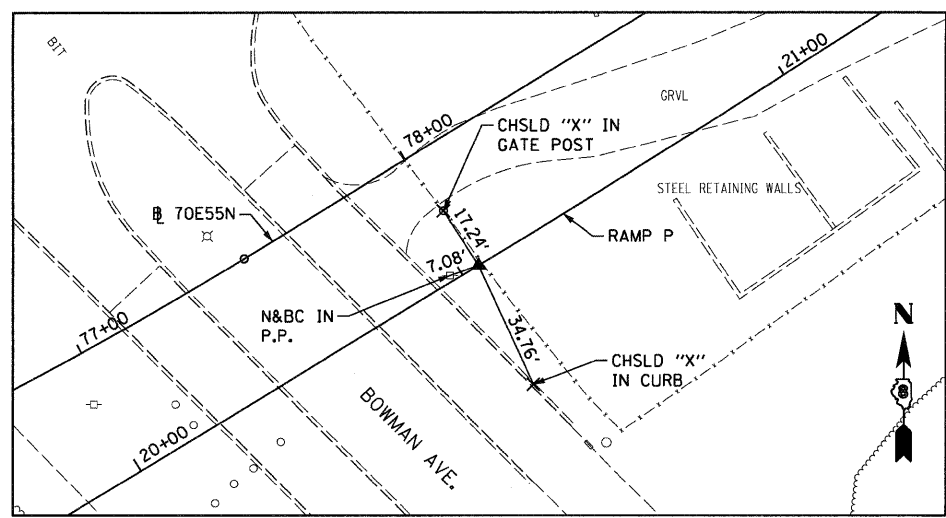
RAMP P  
PC STA 16+90.04  
SET 5/8" REBAR W/RED CAP FLUSH W/GR



RAMP P  
PT STA 19+51.32  
SET 5/8" REBAR W/RED CAP FLUSH W/GR



RAMP P  
PC STA 21+04.96  
SET 5/8" REBAR W/RED LIN ENG. CAP FLUSH W/GR



NOTE:  
INFORMATION ON THIS SHEET  
FROM CONTRACT 76C52

FILE NAME = DBTRI-76C52-sh1-ATB-09.dgn	USER NAME = searsb	DESIGNED OP	REVISED -	<b>STATE OF ILLINOIS DEPARTMENT OF TRANSPORTATION</b>	<b>ALIGNMENT, TIES AND BENCHMARKS</b>			F.A.I RTE. 55/70	SECTION 82-1LS	COUNTY ST. CLAIR	TOTAL SHEETS 38	SHEET NO. 13
	PLOT SCALE = 100.0000' / in.	DRAWN PHP	REVISED -		SCALE: NONE	SHEET NO. 9 OF 9 SHEETS	STA.	TO STA.	CONTRACT NO. 76F37			
	PLOT DATE = 1/24/2012	CHECKED DBM	REVISED -						ILLINOIS FED. AID PROJECT			
		DATE 1-20-12	REVISED -									