

STATE OF ILLINOIS
DEPARTMENT OF TRANSPORTATION

F.A.P. RTE	SECTION	COUNTY	TOTAL SHEETS	SHEET NO.
310	60-(8,9,10,11)RS-2	MADISON	12	1
			ILLINOIS	CONTRACT NO. 76M72

D-98-086-19



LOCATION OF SECTION INDICATED THUS: - - -

PROPOSED HIGHWAY PLANS

FAP ROUTE 310 (IL 255)
SECTION 60-(8,9,10,11)RS-2
PROJECT NHPP-EGHH(196)
SMART RESURFACING FROM I-270 TO IL 143
MADISON COUNTY

FOR INDEX OF SHEETS, SEE SHEET NO. 2

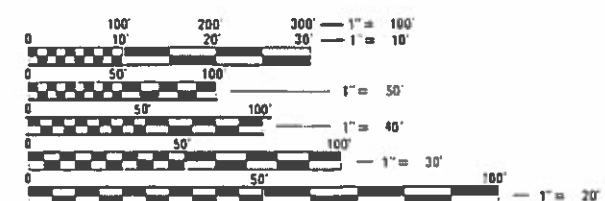
TRAFFIC DATA

FUNCTIONAL CLASSIFICATION: FREEWAY
I-270 TO GATEWAY COMMERCE CENTER DR.
2017 ADT (ACTUAL): 36000
2019 ADT (ESTIMATED): 36900
2039 ADT (ESTIMATED): 46800
SU: 11.7%
MU: 9.0%

GATEWAY COMMERCE CENTER DR. TO NEW POAG RD.
2017 ADT (ACTUAL): 33700
2019 (ESTIMATED): 34500
2039 (ESTIMATED): 43800
SU: 7.8%
MU: 7.6%

NEW POAG RD. TO MADISON AVE.
2017 ADT (ACTUAL): 28600
2019 ADT (ESTIMATED): 29300
2039 ADT (ESTIMATED): 37200
SU: 9.2%
MU: 7.3%

MADISON AVE. TO IL 143
2017 ADT (ACTUAL): 26200
2019 (ESTIMATED): 26800
2039 (ESTIMATED): 34100
SU: 9.7%
MU: 5.3%



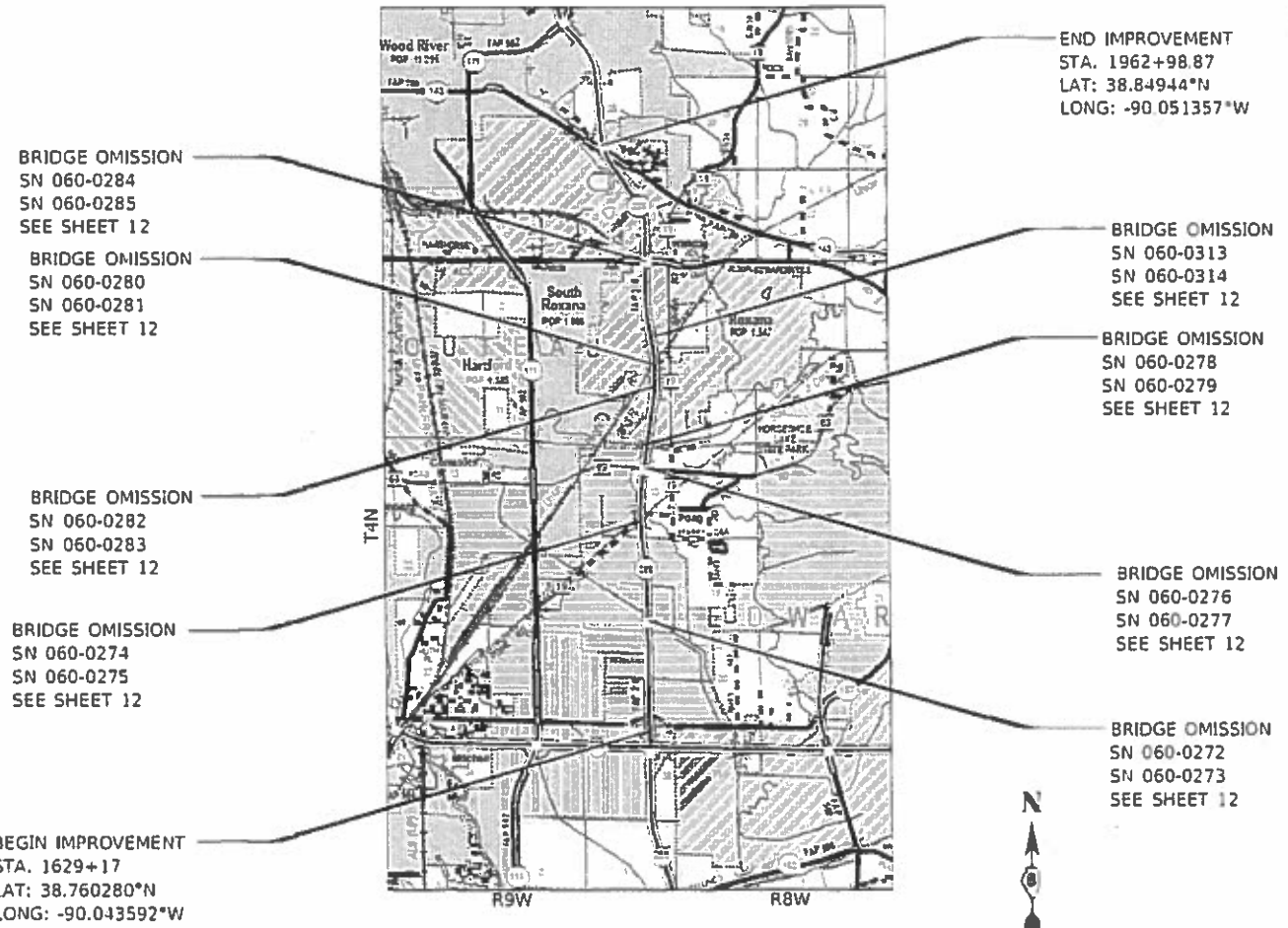
FULL SIZE PLANS HAVE BEEN PREPARED USING STANDARD ENGINEERING SCALES. REDUCED SIZED PLANS WILL NOT CONFORM TO STANDARD SCALES. IN MAKING MEASUREMENTS ON REDUCED PLANS, THE ABOVE SCALES MAY BE USED.

J.U.L.I.E.
JOINT UTILITY LOCATION INFORMATION FOR EXCAVATORS
1-800-892-0123
OR 811

PROJECT ENGINEER TIM PADGETT 618-346-3325
PROJECT MANAGER PHIL COPPERNOLL 618-346-3181

CONTRACT NO. 76M72

C-98-105-19



BRIDGE OMISSION
SN 060-0284
SN 060-0285
SEE SHEET 12

BRIDGE OMISSION
SN 060-0280
SN 060-0281
SEE SHEET 12

BRIDGE OMISSION
SN 060-0282
SN 060-0283
SEE SHEET 12

BRIDGE OMISSION
SN 060-0274
SN 060-0275
SEE SHEET 12

BEGIN IMPROVEMENT
STA. 1629+17
LAT: 38.760280°N
LONG: -90.043592°W

END IMPROVEMENT
STA. 1962+98.87
LAT: 38.84944°N
LONG: -90.051357°W

BRIDGE OMISSION
SN 060-0313
SN 060-0314
SEE SHEET 12

BRIDGE OMISSION
SN 060-0278
SN 060-0279
SEE SHEET 12

BRIDGE OMISSION
SN 060-0276
SN 060-0277
SEE SHEET 12

BRIDGE OMISSION
SN 060-0272
SN 060-0273
SEE SHEET 12



GROSS LENGTH = 33,381 FT. = 6.32 MILE
NET LENGTH = 31,055 FT. = 5.88 MILE

STATE OF ILLINOIS
DEPARTMENT OF TRANSPORTATION

SUBMITTED *June 3 20 19*
Kath Roberts
REGIONAL ENGINEER

June 14 20 19
Scott A. Etkin
ENGINEER OF DESIGN AND ENVIRONMENT

June 10 20 19
David P. Chaffin
DIRECTOR OF HIGHWAYS PROJECT IMPLEMENTATION

PRINTED BY THE AUTHORITY
OF THE STATE OF ILLINOIS

INDEX OF SHEETS

1	COVER SHEET
2	INDEX OF SHEETS, HIGHWAY STANDARDS, GENERAL NOTES, COMMITMENTS, PEAK HOUR RESTRICTIONS
3-4	SUMMARY OF QUANTITIES
5-6	TYPICAL SECTIONS
7-11	SCHEDULE OF QUANTITIES
12	LOCATION MAP, BRIDGE OMISSIONS

HIGHWAY STANDARDS

000001-07	STANDARD SYMBOLS, ABBREVIATIONS AND PATTERNS
001006	DECIMAL OF AN INCH AND OF A FOOT
701400-09	APPROACH TO LANE CLOSURE, FREEWAY / EXPRESSWAY
701401-12	LANE CLOSURE, FREEWAY / EXPRESSWAY
701411-09	LANE CLOSURE, MULTILANE, AT ENTRANCE OR EXIT RAMP FOR SPEEDS ≥ 45 MPH
701426-09	LANE CLOSURE, MULTILANE, INTERMITTENT OR MOVING OPER., FOR SPEEDS ≥ 45 MPH
701428-01	TRAFFIC CONTROL SETUP AND REMOVAL FREEWAY / EXPRESSWAY
701446-09	TWO LANE CLOSURE, FREEWAY / EXPRESSWAY
701456-05	PARTIAL EXIT RAMP CLOSURE FREEWAY / EXPRESSWAY
701901-08	TRAFFIC CONTROL DEVICES
780001-05	TYPICAL PAVEMENT MARKINGS
781001-04	TYPICAL APPLICATIONS RAISED REFLECTIVE PAVEMENT MARKERS

GENERAL NOTES

- ① ILLINOIS STATE LAW REQUIRES A 48-HOUR NOTICE TO BE GIVEN TO ALL UTILITIES WITHIN THE PROJECT AREA BEFORE DIGGING. FIELD MARKING OF FACILITIES MAY BE OBTAINED BY CONTACTING J.U.L.I.E. (1-800-892-0123 OR 811) OR FOR NON-MEMBERS, THE UTILITY COMPANY DIRECTLY.
- ② THE CONTRACTOR AND THE ENGINEER SHALL BE AWARE THAT NO SURVEY WAS PERFORMED FOR THIS PROJECT. THE STATIONING, TOPOGRAPHY, AND QUANTITIES SHOWN IN THE PLANS WERE CREATED USING MICROFILM AND FIELD MEASUREMENTS. ALL SHALL BE ASSUMED TO BE APPROXIMATE. THE CONTRACTOR SHALL VERIFY DIMENSIONS AND CONDITIONS IN THE FIELD PRIOR TO CONSTRUCTION AND ORDERING OF MATERIALS.
- ③ THE THICKNESS OF HOT-MIX ASPHALT SURFACE MIXTURES SHOWN ON THE PLANS IS THE NOMINAL THICKNESS. DEVIATIONS MAY OCCUR DUE TO IRREGULARITIES IN THE EXISTING SURFACE OR BASE ON WHICH THE BITUMINOUS MIXTURE IS PLACED.
- ④ AN ESTIMATED QUANTITY OF 34,943 TONS OF CUTTINGS FROM HMA/MICROSURFACING REMOVAL IS ANTICIPATED.
- ⑤ THE PROPOSED PAVEMENT MARKINGS SHALL MATCH THE LOCATIONS OF THE EXISTING PAVEMENT MARKINGS, AS DIRECTED BY THE ENGINEER.
- ⑥ THE MATERIAL TRANSFER DEVICE CAN CROSS IN AN UNLOADED CONDITION ON ALL STRUCTURES WITHIN THE PROJECT LIMITS.
- ⑦ IF THE PROPOSED SURFACE REMOVAL ON THIS PROJECT PRODUCES A MILLED EDGE NEAR LANE LINES OR EDGE OF PAVEMENT LINES GREATER THAN 1.5 INCHES OR IF THE PROPOSED RESURFACING RESULTS IN AN ELEVATION DIFFERENCE GREATER THAN 2 INCHES NEAR THE LANE LINES BETWEEN ADJACENT OPEN LANES OF TRAFFIC, ONE OF THE FOLLOWING SHALL APPLY:
 - * THE CONTRACTOR SHALL ORGANIZE THE WORK TO AVOID THE ELEVATION DIFFERENCES MENTIONED ABOVE.
 - * THE CONTRACTOR SHALL CONSTRUCT A TEMPORARY HOT MIX ASPHALT WEDGE ALONG THE LANE LINES OR EDGES OF PAVEMENT CENTERLINE TO AVOID THE ELEVATION DIFFERENCES MENTIONED ABOVE.
 - * THE CONTRACTOR SHALL CONSTRUCT A MILLED SLOPE EDGE (MINIMUM 1:3) ALONG THE LANE LINES OR EDGES OF PAVEMENT TO AVOID THE ELEVATION DIFFERENCES MENTIONED ABOVE.

THE COST OF THIS WORK SHALL BE INCLUDED IN THE COST PER SQUARE YARD FOR HOT-MIX ASPHALT SURFACE REMOVAL OF THE DEPTH SPECIFIED OR IN THE COST PER TON FOR THE HOT-MIX ASPHALT RESURFACING MIXES SPECIFIED IN THE PLANS.
- ⑧ THE CONTRACTOR SHALL PROVIDE POSITIVE AND ADEQUATE DRAINAGE AT ALL TIMES. SEE ALSO SPECIAL PROVISIONS "HOT-MIX ASPHALT SURFACE REMOVAL WITH SKETCH OR ILLINOIS STANDARD W8-1107".

GENERAL NOTES CONTINUED

- ⑨ SHORT TERM PAVEMENT MARKING ON SHOULDERS SHALL BE TAPE.
- ⑩ FOUR CHANGEABLE MESSAGE SIGNS SHALL BE PLACED 14 DAYS IN ADVANCE OF CONSTRUCTION. EXACT LOCATION OF CHANGEABLE MESSAGE SIGNS SHALL BE DETERMINED BY THE ENGINEER.
- ⑪ THE DEPARTMENT STRONGLY ENCOURAGES THE PRIME CONTRACTOR AND THEIR APPROVED SUB-CONTRACTORS TO HIRE MINORITY, WOMEN AND DISADVANTAGED INDIVIDUALS FROM ITS FEDERALLY FUNDED HIGHWAY CONSTRUCTION CAREERS TRAINING PROGRAM (HCCTP) TO HELP MEET WORKFORCE AND TRAINEE GOALS. THIS PROGRAM IS TRAINING MINORITIES, WOMEN AND DISADVANTAGED INDIVIDUALS IN HIGHWAY CONSTRUCTION-RELATED SKILLS, E.G., MATH FOR THE TRADES, JOB READINESS, TECHNICAL SKILLS IN COURSEWORK (CARPENTRY, CONCRETE FLATWORK, BLUEPRINT READING, SITE PLANS, SITE WORK, TOOLS USE, ETC.) AND OSHA 10 HOUR CERTIFICATION, TO PREPARE THEM FOR A CAREER IN THE HIGHWAY CONSTRUCTION TRADES. GRADUATES ARE WELL-TRAINED AND READY TO BECOME PRODUCTIVE ENTRY-LEVEL CONSTRUCTION WORKERS. CONTACT THE DISTRICT 8 EEO OFFICE AT 618-346-3360 AND/OR THE HCCTP COORDINATOR AT 618-874-6528 TO LEARN MORE ABOUT THE PROGRAM AND FOR ASSISTANCE IN METTING WORKFORCE AND TRAINEE GOALS.
- ⑫ THE SHOULDER MILLING/RESURFACING SHALL NOT DISTRUB THE EXISTING RUMBLE STRIP IN THE SHOULDERS.
- ⑬ THE MIXTURE REQUIREMENTS ARE AS FOLLOWS:

ROUTE	FAP 310 (IL 255)
SECTION	60-(8,9,10,11)RS-2
COUNTY	MADISON
CONTRACT	76M72

DESCRIPTION:	SMART - RESURFACING FROM FAI 270 TO IL 143 (2" MILL AND FILL) INCLUDES RAMPS
--------------	--

ADT (Construction Yr)	3600
MU%:	9
SU%:	11.7
20 YR. ESAL'S:	2.57

MIXTURE USE	POLY SURFACE				
AC/PG	SB5 PG 76-22				
RAP % (MAX)	SEE SPECIAL PROVISION				
DESIGN AIR VOIDS	4.0% @ Ndes=80				
MIX COMPOSITION (Gradation)	IL 12.5				
FRICTION AGG	SMA				
QUALITY MGMT PROGRAM	PFP				

MIXTURE USE	PATCHING				
AC/PG	PG 64-22				
RAP % (MAX)	SEE SPECIAL PROVISION				
DESIGN AIR VOIDS	4.0% @ Ndes=90				
MIX COMPOSITION (Gradation)	IL 19.0				
FRICTION AGG	MIXTURE "B"				
QUALITY MGMT PROGRAM	QC/QA				

Plan quantities for Bituminous Concrete Surface Course items are calculated using a unit weight of 112 lb/sq yd/in (59.8 kg/sq m/25 mm thickness).

COMMITMENTS

NONE

PEAK HOUR RESTRICTIONS

LOCATION	PEAK HOUR RESTRICTIONS																								
	12:00 AM	1:00 AM	2:00 AM	3:00 AM	4:00 AM	5:00 AM	6:00 AM	7:00 AM	8:00 AM	9:00 AM	10:00 AM	11:00 AM	12:00 PM	1:00 PM	2:00 PM	3:00 PM	4:00 PM	5:00 PM	6:00 PM	7:00 PM	8:00 PM	9:00 PM	10:00 PM	11:00 PM	
IL 255 SOUTH OF GATEWAY COMMERCE DRIVE																									
SB TWO LANES CLOSED						X	X	X	X	X	X	X	X	X	X	X	X	X							
NB TWO LANES CLOSED							X	X	X	X	X	X	X	X	X	X	X	X	X						
SB ONE LANE CLOSED							X	X	X																
NB ONE LANE CLOSED							X	X	X						X	X	X								
IL 255 NORTH OF GATEWAY COMMERCE DRIVE																									
SB ONE LANE CLOSED							X	X	X						X	X	X	X	X						
NB ONE LANE CLOSED							X	X	X						X	X	X	X	X						
	X - DENOTES PEAK HOUR																								
	In addition to the restrictions noted above, no lane closures will be allowed on Fridays between 12:00 p.m. and 12:00 a.m. midnight.																								

MODEL: Default
 FILE: \\nrcs-pic\pub\harcourt\illinois\pwr\DOT\Documents\DOT_Offices\Illinet\B:\Projects\IDB76M72\CADDba\CADDba\Sheets\IDB76M72-2hc-genmake.dgn

USER NAME = coppemallpe	DESIGNED -	REVISED -
	DRAWN -	REVISED -
PLOT SCALE = 100,0000' / in.	CHECKED -	REVISED -
PLOT DATE = 6/3/2019	DATE -	REVISED -

**STATE OF ILLINOIS
DEPARTMENT OF TRANSPORTATION**

**INDEX OF SHEETS, HIGHWAY STANDARDS,
GENERAL NOTES, COMMITMENTS, PEAK HOUR RESTRICTIONS**

SCALE: SHEET 1 OF 1 SHEETS STA. TO STA.

F.A.P RTE.	SECTION	COUNTY	TOTAL SHEETS	SHEET NO.
310	60-(8,9,10,11)RS-2	MADISON	12	2
			CONTRACT NO. 76M72	
		ILLINOIS	FED. AID PROJECT	

CODE NO.	ITEM	UNIT	TOTAL QUANTITY	CONSTR. CODE	
				ROADWAY	URBAN
				80% FED	20% STATE
40600295	POLYMERIZED BITUMINOUS MATERIALS (TACK COAT)	POUND	124631		
40600982	HOT-MIX ASPHALT SURFACE REMOVAL - BUTT JOINT	SQ YD	1887		
40600990	TEMPORARY RAMP	SQ YD	933		
44000158	HOT-MIX ASPHALT SURFACE REMOVAL, 2 1/4"	SQ YD	275435		
44201835	CLASS D PATCHES, TYPE I, 16 INCH	SQ YD	4		
44201839	CLASS D PATCHES, TYPE II, 16 INCH	SQ YD	10		
44201845	CLASS D PATCHES, TYPE IV, 16 INCH	SQ YD	460		
67100100	MOBILIZATION	L SUM	1		
70100420	TRAFFIC CONTROL AND PROTECTION, STANDARD 701411	EACH	20		
70100800	TRAFFIC CONTROL AND PROTECTION, STANDARD 701401	L SUM	1		
70100815	TRAFFIC CONTROL AND PROTECTION, STANDARD 701446	L SUM	1		
70100825	TRAFFIC CONTROL AND PROTECTION, STANDARD 701456	L SUM	1		
70107025	CHANGEABLE MESSAGE SIGN	CAL DA	56		
70200100	NIGHTTIME WORK ZONE LIGHTING	L SUM	1		

MODEL: Default
 FILE: \\nrcs-pic\pub\room\dat\illinois.gov\PWIDOT\Documents\DOT_Offices\Dir\ctc @Projects\IDF76M72\CADD\ba\CAD\sheet\IDF76M72-ht-500.dgn

USER NAME = coppemolpe	DESIGNED -	REVISED -
	DRAWN -	REVISED -
PLOT SCALE = 100.0000 ' / in.	CHECKED -	REVISED -
PLOT DATE = 6/2/2019	DATE -	REVISED -

**STATE OF ILLINOIS
DEPARTMENT OF TRANSPORTATION**

SUMMARY OF QUANTITIES

SCALE: SHEET 1 OF 2 SHEETS STA. TO STA.

F.A.P RTE.	SECTION	COUNTY	TOTAL SHEETS	SHEET NO.
310	60-(8,9,10,11)RS-2	MADISON	12	3
CONTRACT NO. 76M72				
		ILLINOIS	FED. AID PROJECT	

MODEL: Default
 FILE NAME: p:\iblancom.dti\illinois.gov\PWIDOT\Documents\DOT_Offices\District_8\Projects\876M72\CAD\data\CADTables\876M72-shc-500.dgn

				CONSTR. CODE
CODE NO.	ITEM	UNIT	TOTAL QUANTITY	ROADWAY 0005 URBAN
70300100	SHORT TERM PAVEMENT MARKING	FOOT	41827	41827
70300150	SHORT TERM PAVEMENT MARKING REMOVAL	SQ FT	4647	4647
70300210	TEMPORARY PAVEMENT MARKING LETTERS AND SYMBOLS	SQ FT	324	324
70300240	TEMPORARY PAVEMENT MARKING - LINE 6"	FOOT	269260	269260
70300250	TEMPORARY PAVEMENT MARKING - LINE 8"	FOOT	16376	16376
* 78004200	PREFORMED PLASTIC PAVEMENT MARKING, TYPE B - INLAID - LETTERS AND SYMBOLS	SQ FT	324	324
* 78004230	PREFORMED PLASTIC PAVEMENT MARKING, TYPE B - INLAID - LINE 6"	FOOT	269260	269260
* 78004240	PREFORMED PLASTIC PAVEMENT MARKING, TYPE B - INLAID - LINE 8"	FOOT	16376	16376
* 78100100	RAISED REFLECTIVE PAVEMENT MARKER	EACH	2096	2096
78300200	RAISED REFLECTIVE PAVEMENT MARKER REMOVAL	EACH	1959	1959
X4060006	POLYMERIZED HOT-MIX ASPHALT SURFACE COURSE, STONE MATRIX ASPHALT, 12.5, N80	TON	31019	31019
X7030005	TEMPORARY PAVEMENT MARKING REMOVAL	SQ FT	146107	146107
Ø 20076600	TRAINEES	hour	3000	3000
20033700	LONGITUDINAL JOINT SEALANT	FOOT	86234	86234
Ø 20076604	TRAINEES TRAINING PROGRAM GRADUATE	hour	3000	3000
20034105	MATERIAL TRANSFER DEVICE	TON	31019	31019

* SPECIALTY ITEM
 Ø 0042

USER NAME = coppernolpe	DESIGNED -	REVISED -
	DRAWN -	REVISED -
PLOT SCALE = 100.0000 / in.	CHECKED -	REVISED -
PLOT DATE = 6/2/2019	DATE -	REVISED -

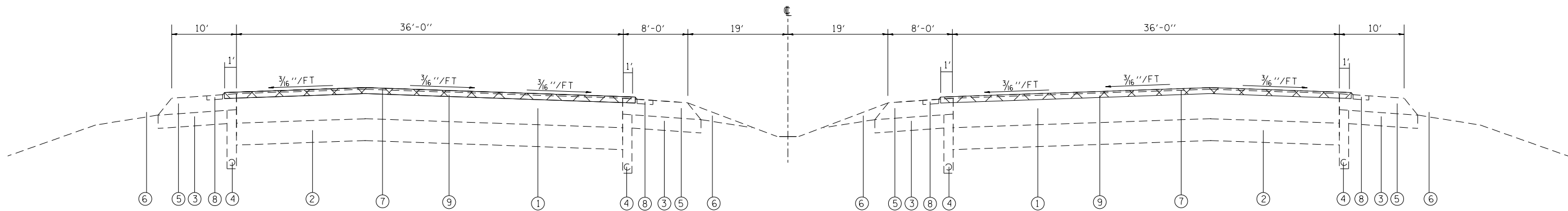
**STATE OF ILLINOIS
 DEPARTMENT OF TRANSPORTATION**

SUMMARY OF QUANTITIES

SCALE: SHEET 2 OF 2 SHEETS STA. TO STA.

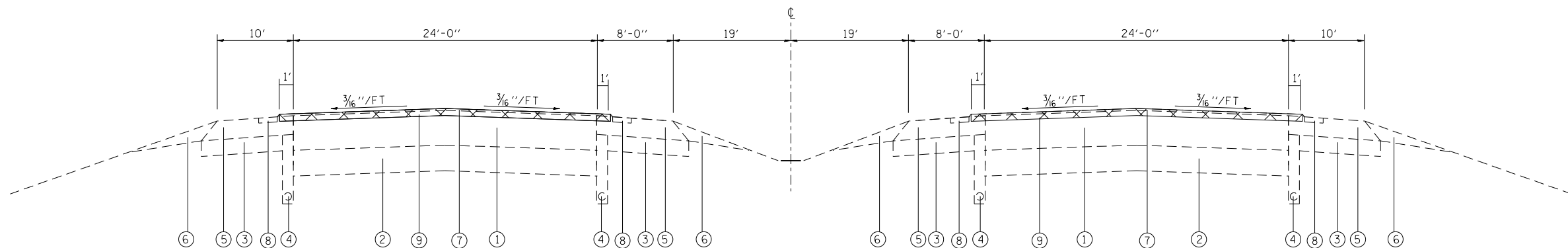
F.A.P. RTE.	SECTION	COUNTY	TOTAL SHEETS	SHEET NO.
310	60-(8,9,10,11)RS-2	MADISON	12	4
ILLINOIS FED. AID PROJECT				

CONTRACT NO. 76M72



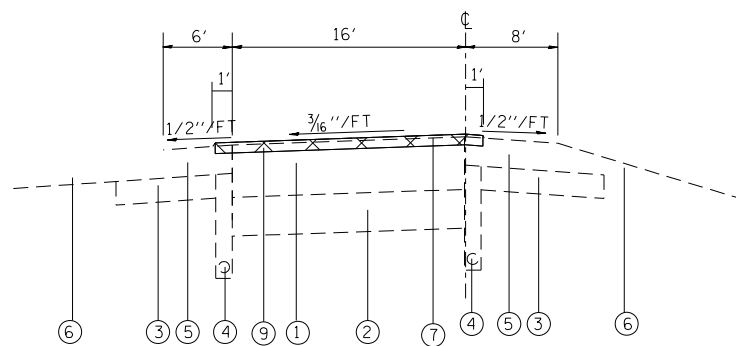
IL 255 - EXISTING TYPICAL SECTION

STA. 1629+17 TO STA. 1681+14



IL 255 - EXISTING TYPICAL SECTION

STA. 1681+14 TO STA. 1964+37



RAMP - EXISTING TYPICAL SECTION

I-270 (CD, RAMP 3, RAMP 5)
 GATEWAY COMMERCE CENTER (RAMPS A,B,C,D)
 NEW POAG ROAD (RAMPS 1,2,3,4)
 MADISON AVENUE (RAMPS 1,2,3,4)
 IL 143 (RAMPS 1,2)

LEGEND

- ① EXISTING HMA FULL-DEPTH PAVEMENT, 16 1/2"
- ② EXISTING LIME MODIFIED SOIL, 12"
- ③ EXISTING STABILIZED SUB-BASE, 4"
- ④ EXISTING PIPE UNDERDRAIN, 4"
- ⑤ EXISTING HMA SHOULDERS
- ⑥ EXISTING AGG. SHOULDERS
- ⑦ EXISTING MICRO-SURFACING SINGLE PASS, TYPE II, MIX D
- ⑧ EXISTING SHOULDER RUMBLE STRIP
- ⑨ PROPOSED HOT-MIX ASPHALT SURFACE REMOVAL 2 1/4"
- ⑩ PROPOSED LONGITUDINAL JOINT SEALANT
- ⑪ PROPOSED BITUMINOUS MATERIALS (TACK COAT)
- ⑫ PROPOSED POLYMERIZED HOT-MIX ASPHALT SURFACE COURSE, STONE MATRIX ASPHALT, 12.5, N80, 2"
- ⑬ PROPOSED PREFORMED PLASTIC PAVEMENT MARKING, TYPE B - INLAID

MODEL: Default
 FILE: Model: P:\pub\planroom.dwg
 PROJECT: I:\DOT\Documents\DOT_Offices\I\dot\I\DOT\Projects\DOT\76M72\CADD\Drawings\DOT\76M72-Sub\Typical.dgn
 PLOT DATE: 6/2/2019

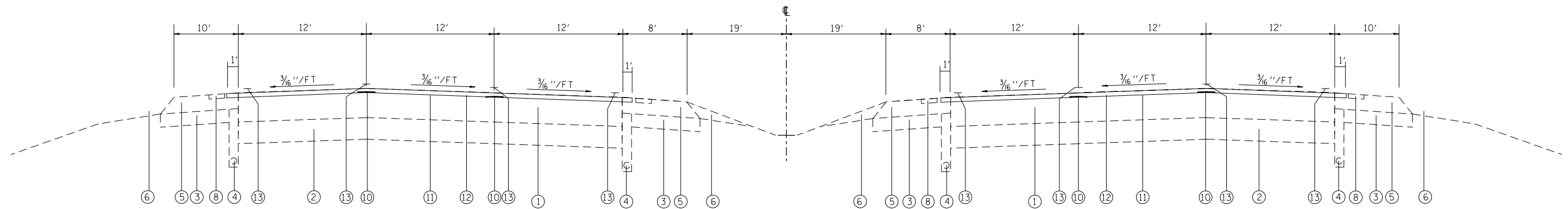
USER NAME = coppemolpe	DESIGNED -	REVISED -
	DRAWN -	REVISED -
PLOT SCALE = 100.0000' / in.	CHECKED -	REVISED -
PLOT DATE = 6/2/2019	DATE -	REVISED -

**STATE OF ILLINOIS
 DEPARTMENT OF TRANSPORTATION**

EXISTING TYPICAL SECTIONS

SCALE: SHEET 1 OF 2 SHEETS STA. TO STA.

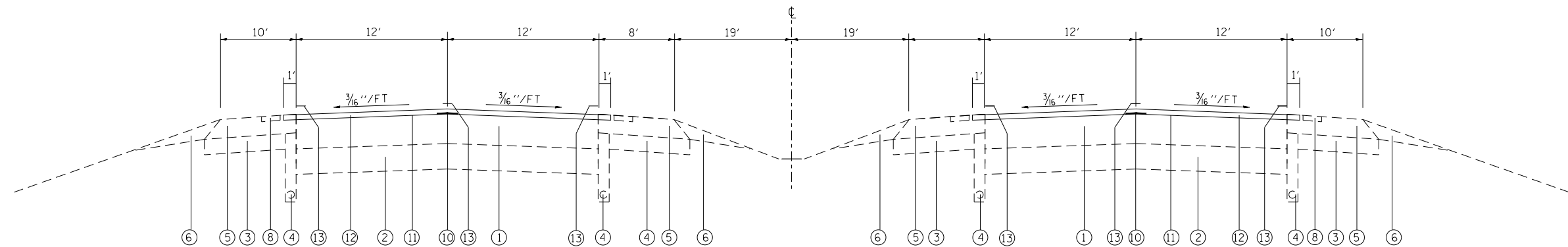
F.A.P. RTE.	SECTION	COUNTY	TOTAL SHEETS	SHEET NO.
310	60-(8,9,10,11)RS-2	MADISON	12	5
CONTRACT NO. 76M72				
ILLINOIS FED. AID PROJECT				



IL 255 - PROPOSED TYPICAL SECTION

STA. 1748+73 TO STA. 1964+37

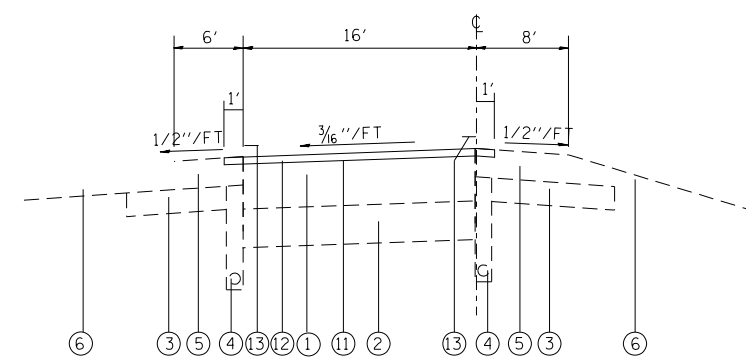
NOTE: LONGITUDINAL JOINT SEALANT SHALL BE APPLIED BETWEEN LANE LINES AND RAMPS GORE AREAS



IL 255 - PROPOSED TYPICAL SECTION

STA. 1748+73 TO STA. 1964+37

NOTE: LONGITUDINAL JOINT SEALANT SHALL BE APPLIED BETWEEN LANE LINES AND RAMPS GORE AREAS



RAMP - PROPOSED TYPICAL SECTION

I-270 (CD, RAMP 3, RAMP 5)
 GATEWAY COMMERCE CENTER (RAMPS A,B,C,D)
 NEW POAG ROAD (RAMPS 1,2,3,4)
 MADISON AVENUE (RAMPS 1,2,3,4)
 IL 143 (RAMPS 1,2)

NOTE: LONGITUDINAL JOINT SEALANT SHALL BE APPLIED BETWEEN LANE LINES AND RAMPS GORE AREAS

LEGEND

- ① EXISTING HMA FULL-DEPTH PAVEMENT, 16 1/2"
- ② EXISTING LIME MODIFIED SOIL, 12"
- ③ EXISTING STABILIZED SUB-BASE, 4"
- ④ EXISTING PIPE UNDERDRAIN, 4"
- ⑤ EXISTING HMA SHOULDERS
- ⑥ EXISTING AGG. SHOULDERS
- ⑦ EXISTING MICRO-SURFACING SINGLE PASS, TYPE II, MIX D
- ⑧ EXISTING SHOULDER RUMBLE STRIP
- ⑨ PROPOSED HOT-MIX ASPHALT SURFACE REMOVAL 2 1/4"
- ⑩ PROPOSED LONGITUDINAL JOINT SEALANT
- ⑪ PROPOSED BITUMINOUS MATERIALS (TACK COAT)
- ⑫ PROPOSED POLYMERIZED HOT-MIX ASPHALT SURFACE COURSE, STONE MATRIX ASPHALT, 12.5, N80, 2"
- ⑬ PROPOSED PREFORMED PLASTIC PAVEMENT MARKING, TYPE B - INLAID

MODEL: Default
 FILE: \\nrcs-pic\pub\room\dat\illinois.gov\PI\DOT\Documents\DOT_Offices\District_8\Projects\ID076M72\CADD\Drawings\ID076M72-Sub\Typical.dgn

USER NAME = coppemolpe	DESIGNED -	REVISED -
	DRAWN -	REVISED -
PLOT SCALE = 100.0000' / in.	CHECKED -	REVISED -
PLOT DATE = 6/2/2019	DATE -	REVISED -

**STATE OF ILLINOIS
 DEPARTMENT OF TRANSPORTATION**

PROPOSED TYPICAL SECTIONS

SCALE: SHEET 2 OF 2 SHEETS STA. TO STA.

F.A.P. RTE.	SECTION	COUNTY	TOTAL SHEETS	SHEET NO.
310	60-(8,9,10,11)RS-2	MADISON	12	6
CONTRACT NO. 76M72				
ILLINOIS FED. AID PROJECT				

NB MAINLINE PAVEMENT MARKING SCHEDULE													
LOCATION			LENGTH FOOT	PERFORMED PLASTIC PAVEMENT MARKING, TYPE B - INLAID					TEMPORARY PAVEMENT MARKING REMOVAL SQ FT	SHORT TERM PAVEMENT MARKING (3 APPLICATIONS) FOOT	SHORT TERM PAVEMENT MARKING REMOVAL (FINAL SURFACE ONLY) SQ FT		
STA.	TO	STA.		6" YELLOW SOLID FOOT	6" WHITE SKIP DASH FOOT	6" WHITE SOLID FOOT	8" WHITE SOLID FOOT	8" WHITE DASHED FOOT					
IL 255 NB													
1629+17	TO	1637+41	824.2	824	412.1	824			1030.3	647.4	71.9		
1637+41	TO	1641+98	457.0	457	228.5		457		647.5	359.0	39.9		
1641+98	TO	1650+94	895.3	895	447.6	895			1119.1	703.2	78.1		
1650+94	TO	1669+30	1836.4	1836	459.1	1836		459	2525.1	941.6	104.6		
1669+30	TO	1677+00	770.1	770	192.5	770	770		1379.7	394.8	43.9		
1677+00	TO	1690+41	1341.5	1341	335.4	1341			1509.2	687.8	76.4		
1690+41	TO	1692+84	242.0	SN 060-0272 IL 255 NB OVER GATEWAY COMMERCE CENTER DRIVE OMISSION									
1692+84	TO	1703+86	1102.6	1103	275.6	1103			1240.4	565.3	62.8		
1703+86	TO	1707+88	402.1	402	100.5		402		519.4	206.2	22.9		
1707+88	TO	1745+91	3802.5	3803	950.6	3803			4277.8	1949.7	216.6		
1745+91	TO	1749+81	389.9	SN 060-0274 IL 255 NB OVER RR AND OLD POAG ROAD OMISSION									
1749+81	TO	1754+46	465.4	465	116.3	465			523.6	238.6	26.5		
1754+46	TO	1758+40	394.4	789	98.6		394		706.7	202.2	22.5		
1758+40	TO	1771+19	1278.1	1278	319.5	1278			1437.8	655.3	72.8		
1771+19	TO	1774+26	307.3	307	76.8		307		396.9	157.5	17.5		
1774+26	TO	1774+96	70.3	70	17.6	70	141		172.7	36.0	4.0		
1774+96	TO	1777+78	282.0	SN 060-0276 IL 255 NB OVER NEW POAG / LEVEE ROAD OMISSION									
1777+78	TO	1785+75	796.9	3188	199.2	797			2091.9	408.6	45.4		
1785+75	TO	1790+03	428.1	SN 060-0278 IL 255 NB OVER CAHOKIA DIVERSION CHANNEL OMISSION									
1790+03	TO	1815+50	2547.1	10188	636.8	7641			9233.1	1305.9	145.1		
1815+50	TO	1817+28	178.1	SN 060-0282 IL 255 NB OVER WAGON WHEEL ROAD OMISSION									
1817+28	TO	1835+57	1828.5	1829	457.1	1829			2057.1	937.5	104.2		
1835+57	TO	1839+50	393.1	SN 060-0280 IL 255 NB OVER UNION PACIFIC RR OMISSION									
1839+50	TO	1847+55	805.0	3220	201.3	2415			2918.3	412.8	45.9		
1847+55	TO	1849+03	147.7	SN 060-0313 IL 255 NB OVER FIELD ACCESS OMISSION									
1849+03	TO	1876+10	2707.5	10830	676.9	5415			8460.8	1388.2	154.2		
1876+10	TO	1876+89	79.0	79	19.8	158	79		181.1	40.5	4.5		
1876+89	TO	1879+47	258.2	258	64.5		258		333.5	132.4	14.7		
1879+47	TO	1891+94	1246.6	1247	311.6	1247			1402.4	639.1	71.0		
1891+94	TO	1894+80	286.3	286	71.6		286		369.8	146.8	16.3		
1894+80	TO	1897+45	265.0	SN 060-0284 IL 255 NB OVER MADISON AVENUE OMISSION									
1897+45	TO	1931+05	3360.3	3360	840.1	3360			3780.3	1722.9	191.4		
1931+05	TO	1941+05	1000.0	1000	250.0	1000	250		1375.0	512.7	57.0		
1941+05	TO	1946+48	542.9	543	135.7	543	543		972.7	278.3	30.9		
1946+48	TO	1949+45	297.0	297	74.3	297	594		730.1	152.3	16.9		
1949+45	TO	1952+11	265.3	265	66.3	265	265		342.6	136.0	15.1		
1952+11	TO	1962+99	1088.3	1088	272.1	1088			1224.4	558.0	62.0		
SUBTOTAL				52020	8308	38176	4497	709	52959	16517	1835		
SUB TOTAL					98504		4497	710	52959	16517	1835		

LOCATION	PERFORMED PLASTIC PAVEMENT MARKING, TYPE B - INLAID						TEMPORARY PAVEMENT MARKING REMOVAL SQ FT	SHORT TERM PAVEMENT MARKING (3 APPLICATIONS) FOOT	SHORT TERM PAVEMENT MARKING REMOVAL (FINAL SURFACE ONLY) SQ FT	
	6" YELLOW SOLID FOOT	6" WHITE SKIP DASH FOOT	6" WHITE SOLID FOOT	8" WHITE SOLID FOOT	8" WHITE DASHED FOOT	LETTERS & SYMBOLS SQ FT				
	NB MAINLINE	52020	8308	38176	4497	709				
SB MAINLINE	51781	8922	39974	3971			52986	17203	1911	
CD AND RAMPS	40550	181	29348	7199		323.6	40162.0	8107.1	900.8	
	269260			16376			323.6	146107.2	41826.6	4647.4
ROUNDED TOTAL	269260			16376			324	146107	41827	4647

**STATE OF ILLINOIS
DEPARTMENT OF TRANSPORTATION**

SCHEDULE OF QUANTITIES

F.A.P. RTE.	SECTION	COUNTY	TOTAL SHEETS	SHEET NO.
310	60-(8,9,10,11)RS-2	MADISON	12	9
CONTRACT NO. 76M72				
ILLINOIS		FED. AID PROJECT		

SCALE: SHEET 3 OF 5 SHEETS STA. TO STA.

COLLECTOR DISTRIBUTOR (CD) AND RAMP PAVEMENT MARKING SCHEDULE

LOCATION	LENGTH	PERFORMED PLASTIC PAVEMENT MARKING, TYPE B - INLAID					TEMPORARY PAVEMENT MARKING REMOVAL	SHORT TERM PAVEMENT MARKING (3 APPLICATIONS)	SHORT TERM PAVEMENT MARKING REMOVAL (FINAL SURFACE ONLY)	
		6" YELLOW SOLID	6" WHITE SKIP DASH	6" WHITE SOLID	8" WHITE SOLID	LETTERS & SYMBOLS				
STA. TO STA.	FOOT	FOOT	FOOT	FOOT	FOOT	SQ FT	FOOT	SQ FT		
IL 255 SB CD										
1629+52 TO 1637+76	824.7	825		825		824.7	197.9	22.0		
1637+76 TO 1640+69	292.7	293			293	341.5	70.3	7.8		
1640+69 TO 1650+54	984.5	984		1969		1476.7	236.3	26.3		
1650+54 TO 1654+16	362.3	362			362	422.6	86.9	9.7		
IL 255 SB TO I-270 WB (RAMP 3)										
338+29 TO 341+20	290.9	291			291	339.4	69.8	7.8		
341+20 TO 354+86	1366.6	1367		1367		1366.6	328.0	36.4		
354+86 TO 356+60	173.6	174		174	347	405.2	41.7	4.6		
745+43 TO 749+00	357.4	357		357	715	834.0	85.8	9.5		
749+00 TO 764+65	1564.9	1565		1565		1564.9	375.6	41.7		
I-270 EB TO IL 255 NB (RAMP 5)										
584+18 TO 612+25	2807.0	5614		2807		4210.5	673.7	74.9		
612+25 TO 616+80	454.9	455			455	530.7	109.2	12.1		
IL 255 NB TO GTWY CMRC (RAMP A)										
110+00 TO 112+00	200.0	200			200	233.3	48.0	5.3		
112+00 TO 122+63	1062.8	4251		1323		2841.2	255.1	28.3		
GTWY CMRC TO IL 255 NB (RAMP B)										
201+61 TO 215+22	1361.0	1361		1361		1361.0	326.6	36.3		
215+22 TO 219+21	399.5	400			400	466.1	95.9	10.7		
IL 255 SB TO GTWY CMRC (RAMP C)										
0+00 TO 6+59	659.4	659			659	769.3	158.3	17.6		
6+59 TO 20+31	1372.0	1372		1722		1601.1	329.3	36.6		
GTWY CMRC TO IL 255 SB (RAMP D)										
401+73 TO 415+90	1417.2	1417		1417		1417.2	340.1	37.8		
415+90 TO 419+38	347.5	348			348	405.4	83.4	9.3		
IL 255 NB TO NEW POAG ROAD (RAMP 4)										
453+50 TO 458+36	486.7	487			487	567.8	116.8	13.0		
458+36 TO 476+62	1825.9	1826		1876		1905.0	438.2	48.7		
NEW POAG ROAD TO IL 255 NB (RAMP 3)										
309+28 TO 321+76	1248.7	1249		1249		1248.7	299.7	33.3		
321+76 TO 324+81	304.2	304			304	354.9	73.0	8.1		
IL 255 SB TO NEW POAG ROAD (RAMP 2)										
282+21 TO 284+81	259.8	260			260	303.2	62.4	6.9		
284+81 TO 300+53	1572.3	1572		1572		1595.2	377.3	41.9		
NEW POAG ROAD TO IL 255 SB (RAMP 1)										
196+15 TO 213+75	1759.6	1760			1760	1759.6	422.3	46.9		
213+75 TO 217+84	408.6	409			409	476.6	98.1	10.9		
IL 255 NB TO MADISON AVE (RAMP 4)										
13+29 TO 15+87	257.7	258			258	300.6	61.8	6.9		
15+87 TO 32+73	1685.5	1686		1686		1708.4	404.5	44.9		
MADISON AVE TO IL 255 NB (RAMP 3)										
11+36 TO 22+33	1097.4	1097		1097		1097.4	263.4	29.3		
22+33 TO 25+17	283.8	284			284	331.1	68.1	7.6		
IL 255 SB TO MADISON AVE (RAMP 2)										
14+02 TO 16+61	258.2	1033			258	688.5	62.0	6.9		
16+61 TO 33+00	1639.5	1639		1639		1662.4	393.5	43.7		
MADISON AVE TO IL 255 SB (RAMP 1)										
13+40 TO 29+81	1640.4	1640		1640		1640.4	393.7	43.7		
29+81 TO 32+84	302.9	303			303	353.4	72.7	8.1		
IL 255 NB TO IL 143 (RAMP 2)										
13+40 TO 16+00	259.6	260	64.9		260	335.4	62.3	6.9		
16+00 TO 19+00	300.0	300	75.0		300	337.5	72.0	8.0		
19+00 TO 20+65	165.0	165	41.3		225	308.2	39.6	4.4		
IL 143 TO IL 255 SB (RAMP 1)										
11+66 TO 25+84	1417.3	1417		1417		1417.3	340.2	37.8		
25+84 TO 28+91	307.7	308			308	359.0	73.9	8.2		
SUBTOTAL			40550	181.2	29348	7199	323.6	40162.0	8107.1	900.8
SUB TOTAL				70079		7199	324	40162	8107	901

TEMPORARY RAMP SCHEDULE			
LOCATION			TEMPORARY RAMP
STA.	TO	STA.	NB/SB SQ YD
IL-255 Mainline			
1629+17.00	TO	1629+27.00	NB 19.3
1690+31.48	TO	1690+41.48	NB 19.3
1692+83.52	TO	1692+93.52	NB 19.3
1745+80.73	TO	1745+90.73	NB 19.3
1749+80.63	TO	1749+90.63	NB 19.3
1774+86.02	TO	1774+96.02	NB 19.3
1777+78.00	TO	1777+88.00	NB 19.3
1785+64.92	TO	1785+74.92	NB 19.3
1790+03.07	TO	1790+13.07	NB 19.3
1815+40.13	TO	1815+50.13	NB 19.3
1817+28.27	TO	1817+38.27	NB 19.3
1835+46.78	TO	1835+56.78	NB 19.3
1839+49.88	TO	1839+59.88	NB 19.3
1847+44.93	TO	1847+54.93	NB 19.3
1849+02.61	TO	1849+12.61	NB 19.3
1894+70.08	TO	1894+80.08	NB 19.3
1897+45.08	TO	1897+55.08	NB 19.3
1962+88.87	TO	1962+98.87	NB 19.3
IL-255 Mainline			
1629+35.85	TO	1629+45.85	SB 19.3
1690+76.52	TO	1690+86.52	SB 19.3
1693+58.52	TO	1693+68.52	SB 19.3
1745+20.00	TO	1745+30.00	SB 19.3
1749+14.94	TO	1749+24.94	SB 19.3
1774+86.02	TO	1774+96.02	SB 19.3
1777+71.00	TO	1777+81.00	SB 19.3
1785+39.58	TO	1785+49.58	SB 19.3
1789+77.08	TO	1789+87.08	SB 19.3
1815+35.80	TO	1815+45.80	SB 19.3
1817+24.73	TO	1817+34.73	SB 19.3
1834+43.07	TO	1834+53.07	SB 19.3
1838+49.62	TO	1838+59.62	SB 19.3
1847+44.56	TO	1847+54.56	SB 19.3
1849+02.91	TO	1849+12.91	SB 19.3
1894+70.08	TO	1894+80.08	SB 19.3
1897+45.08	TO	1897+55.08	SB 19.3
1963+97.73	TO	1964+07.73	SB 19.3
IL-255 CD			
1629+51.78	TO	1629+61.78	13.3
IL-255 SB TO I-270 WB RAMP (RAMP 3)			
745+32.57	TO	745+42.57	13.3
764+54.87	TO	764+64.87	13.3
I-270 WB TO IL 255 NB RAMP (RAMP 5)			
584+17.77	TO	584+27.77	13.3
IL 255 NB TO GATEWAY COMMERCE CT (RAMP A)			
122+52.83	TO	122+62.83	13.3
GATEWAY COMMERCE CT TO IL 255 NB (RAMP B)			
201+60.85	TO	201+70.85	13.3
IL 255 SB TO GATEWAY COMMERCE CT (RAMP C)			
20+21.38	TO	20+31.38	13.3
GATEWAY COMMERCE CT TO IL 255 SB (RAMP D)			
401+73.28	TO	401+83.28	13.3
IL 255 NB TO NEW POAG ROAD (RAMP 4)			
476+52.23	TO	476+62.23	13.3
NEW POAG ROAD TO IL 255 NB (RAMP 3)			
309+27.81	TO	309+37.81	13.3
IL 255 SB TO NEW POAG ROAD (RAMP 2)			
300+42.80	TO	300+52.80	13.3
NEW POAG ROAD TO IL 255 SB (RAMP 1)			
196+15.39	TO	196+30.39	13.3
IL 255 NB TO MADISON AVE (RAMP 4)			
32+62.64	TO	32+72.64	13.3
MADISON AVE TO IL 255 NB (RAMP 3)			
11+35.85	TO	11+45.85	13.3
IL 255 SB TO MADISON AVE (RAMP 2)			
32+90.00	TO	33+00.00	13.3
MADISON AVE TO IL 255 SB (RAMP 1)			
11+40.00	TO	11+50.00	13.3
IL 255 NB TO IL 143 (RAMP 2)			
13+40.36	TO	19+00.00	
20+55.00	TO	20+65.00	13.3
IL 143 TO SB IL 255 (RAMP 1)			
11+66.27	TO	11+76.27	13.3
TOTAL			933

MODEL: Default
 FILE: \\ns1pc\pub\room\dat\illinois\gov\pww\DOT\Documents\DOT - Offices\Illtct - Offices\Illtct - 6/2/2019\CD\shc-schedule.dgn

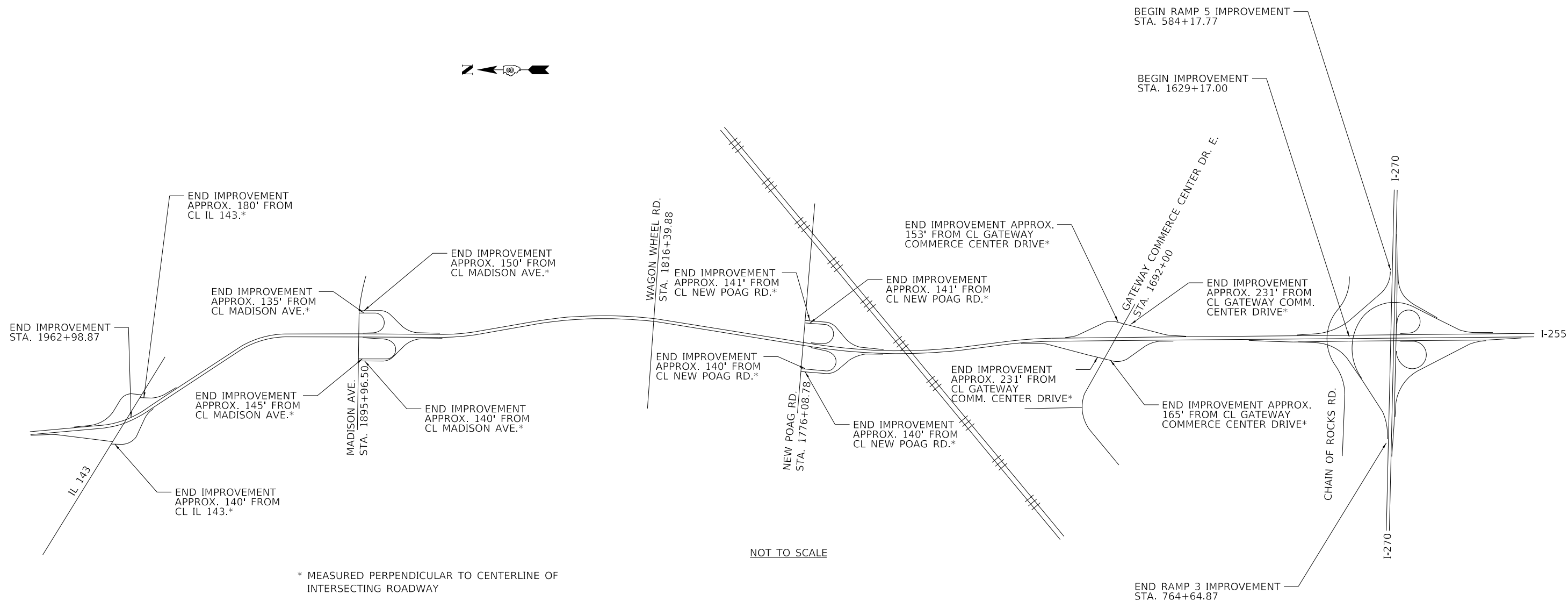
USER NAME = coppemalpe	DESIGNED -	REVISED -
	DRAWN -	REVISED -
PLOT SCALE = 100,0000' / in.	CHECKED -	REVISED -
PLOT DATE = 6/2/2019	DATE -	REVISED -

STATE OF ILLINOIS
 DEPARTMENT OF TRANSPORTATION

SCHEDULE OF QUANTITIES

SCALE: SHEET 5 OF 5 SHEETS STA. TO STA.

F.A.P RTE.	SECTION	COUNTY	TOTAL SHEETS	SHEET NO.
310	60-(8,9,10,11)RS-2	MADISON	12	11
CONTRACT NO. 76M72				
ILLINOIS FED. AID PROJECT				



NOT TO SCALE

* MEASURED PERPENDICULAR TO CENTERLINE OF INTERSECTING ROADWAY

BRIDGE OMISSIONS							
S.N.	NB/SB	STATION	TO	STATION	STRUCTURE LENGTH (FT)	FACILITY CARRIED	FEATURE CROSSED
060-0285	SB	1894+80.08	TO	1897+45.08	265.0	IL 255	MADISON AVE
060-0284	NB	1894+80.08	TO	1897+45.08	265.0	IL 255	MADISON AVE
060-0314	SB	1847+54.56	TO	1849+02.91	148.4	IL 255	FARMERS ACCESS RD.
060-0313	NB	1847+54.93	TO	1849+02.61	147.7	IL 255	FARMERS ACCESS RD.
060-0281	SB	1834+53.07	TO	1838+49.62	396.5	IL 255	UNION PACIFIC RAILROAD
060-0280	NB	1835+56.78	TO	1839+49.88	393.1	IL 255	UNION PACIFIC RAILROAD
060-0283	SB	1815+45.8	TO	1817+24.73	178.9	IL 255	WAGON WHEEL ROXANA
060-0282	NB	1815+50.13	TO	1817+28.27	178.1	IL 255	WAGON WHEEL ROXANA
060-0279	SB	1785+49.58	TO	1789+77.08	427.5	IL 255	CAHOKIA DIVERSION
060-0278	NB	1785+74.92	TO	1790+03.07	428.1	IL 255	CAHOKIA DIVERSION
060-0277	SB	1774+96.02	TO	1777+71.	275.0	IL 255	NEW POAG RD./LEVEE RD.
060-0276	NB	1774+96.02	TO	1777+78.	282.0	IL 255	NEW POAG RD./LEVEE RD.
060-0275	SB	1745+30.	TO	1749+14.94	384.9	IL 255	OLD POAG & N+S RAILROAD
060-0274	NB	1745+90.73	TO	1749+80.63	389.9	IL 255	OLD POAG & N+S RAILROAD
060-0273	SB	1690+86.52	TO	1693+58.52	272.0	IL 255	GATEWAY COMMERCE DR. & CITY DITCH
060-0272	NB	1690+41.48	TO	1692+83.52	242.0	IL 255	GATEWAY COMMERCE DR. & CITY DITCH

MODEL: Default
 FILE: \\nrc\p\pub\room.d\at\illinois.gov\p\pub\room\Documents\DOT_Offices\I11\dot\Projects\I11\76M72\CADDData\CAD\Sheets\I11\76M72-chc-24a-dgn

USER NAME = coppemallpe	DESIGNED -	REVISED -
	DRAWN -	REVISED -
PLOT SCALE = 100,0000' / in.	CHECKED -	REVISED -
PLOT DATE = 6/2/2019	DATE -	REVISED -

**STATE OF ILLINOIS
DEPARTMENT OF TRANSPORTATION**

**LOCATION MAP, BRIDGE OMISSIONS,
PEAK HOUR RESTRICTIONS**

SCALE: N.T.S. SHEET 1 OF 1 SHEETS STA. TO STA.

F.A.P. RTE.	SECTION	COUNTY	TOTAL SHEETS	SHEET NO.
310	60-(8,9,10,11)RS-2	MADISON	12	12
CONTRACT NO. 76M72				
ILLINOIS FED. AID PROJECT				