

STATE OF ILLINOIS  
DEPARTMENT OF TRANSPORTATION

F.A.P. RTE.	SECTION	COUNTY	TOTAL SHEETS	SHEET NO.
64	12)PP;RS-8	PEORIA	14	1
		ILLINOIS	CONTRACT NO. 68H07	

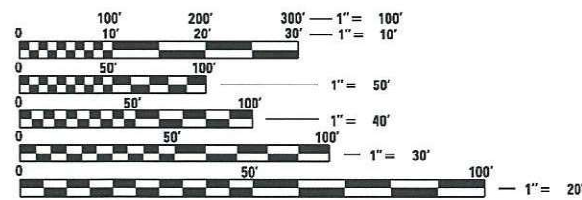
INDEX OF SHEETS:

- 1 COVER SHEET
- 2 GENERAL NOTES
- 3-4 SUMMARY OF QUANTITIES
- 5-7 EXISTING TYPICAL SECTIONS
- 8 LINE DIAGRAM
- 9 SCHEDULES OF QUANTITIES
- 10-12 PAVEMENT MARKING DETAILS
- 13-14 DISTRICT STANDARDS

HIGHWAY STANDARDS:

- 701101-05
- 701426-09
- 701606-10
- 701611-01
- 701901-08
- 780001-05
- 781001-04
- 782001-01

ADT: 14,100 (2019)  
SU: 600 (4.3%)  
MU: 500 (3.5%)



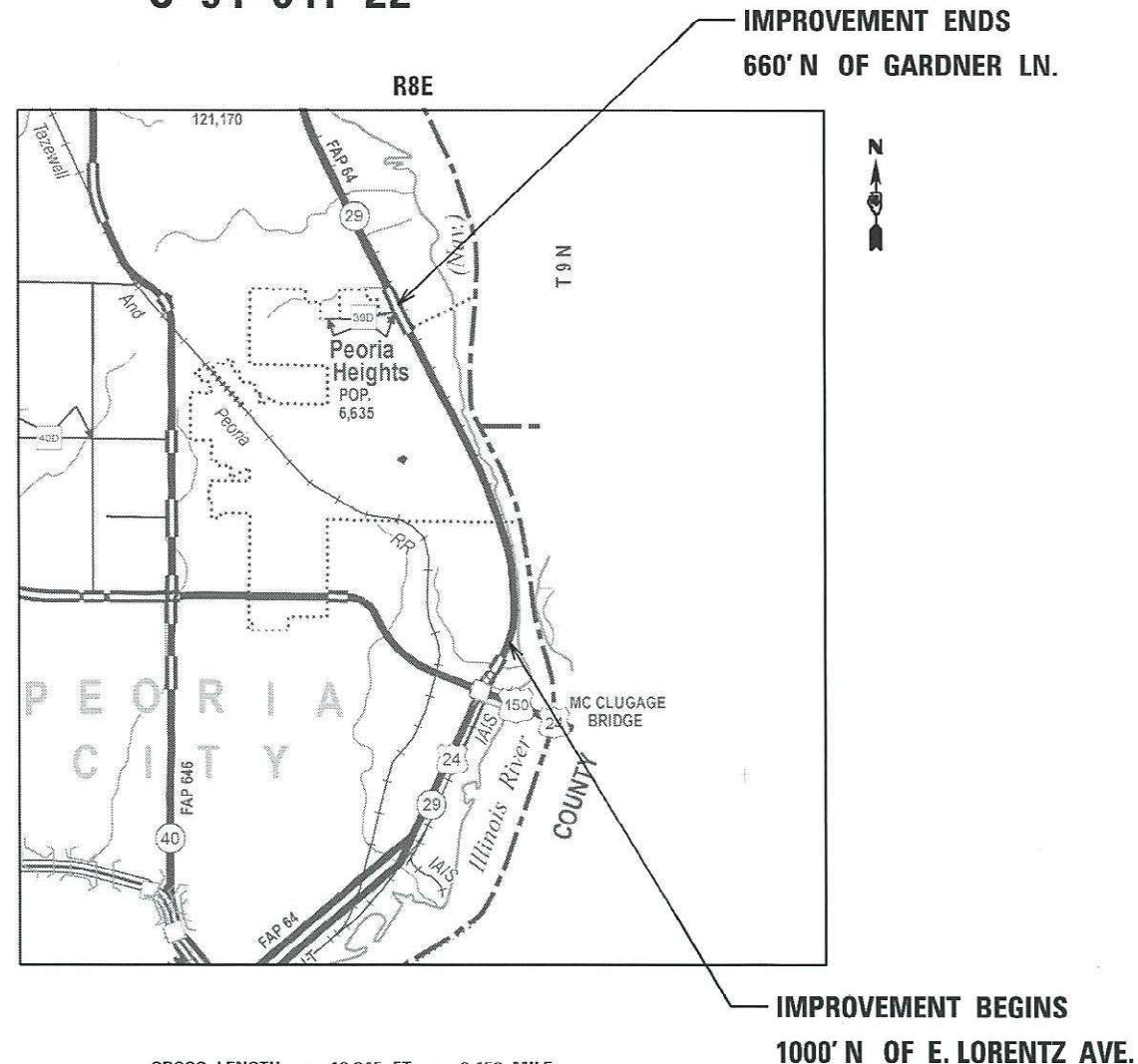
FULL SIZE PLANS HAVE BEEN PREPARED USING STANDARD ENGINEERING SCALES. REDUCED SIZED PLANS WILL NOT CONFORM TO STANDARD SCALES. IN MAKING MEASUREMENTS ON REDUCED PLANS, THE ABOVE SCALES MAY BE USED.

J.U.L.I.E.  
JOINT UTILITY LOCATION INFORMATION FOR EXCAVATORS  
1-800-892-0123  
OR 811

PROJECT ENGINEER RICH DOTSON (309-671-3455)  
PROJECT MANAGER MIA WRIGHT (309-671-3473)  
CATALOG NO. 036315-00D  
CONTRACT NO. 68H07

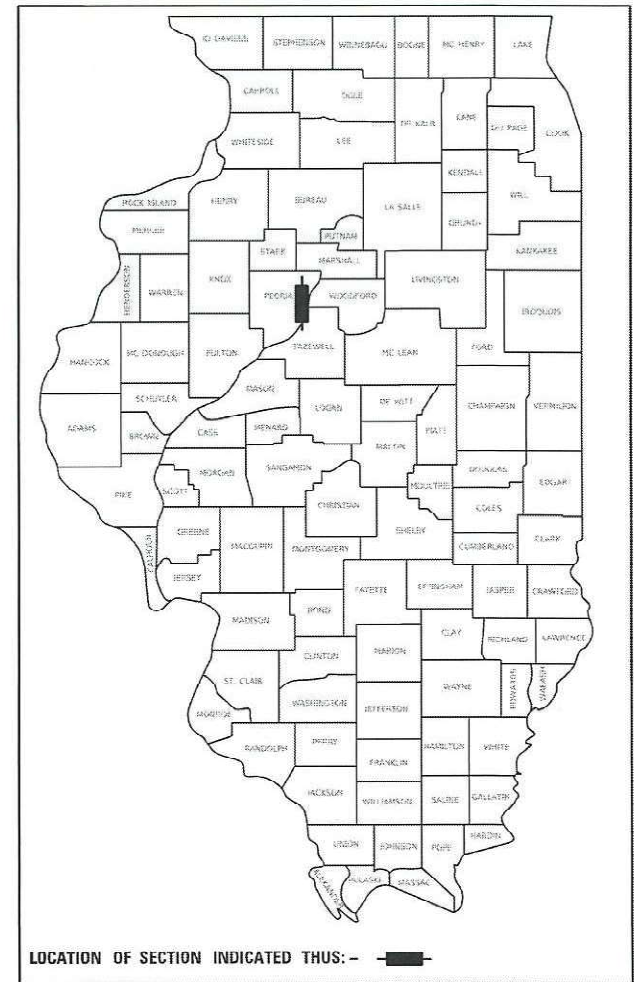
PROPOSED  
HIGHWAY PLANS

FAP ROUTE 64 (IL 29)  
SECTION (12)PP;RS-8  
PATCHING  
PEORIA COUNTY  
C-94-041-22



GROSS LENGTH = 12,945 FT. = 2.452 MILE  
NET LENGTH = 12,945 FT. = 2.452 MILE

D-94-026-22



LOCATION OF SECTION INDICATED THIS: - [black rectangle] -

PROJECT DESCRIPTION:  
PARTIAL DEPTH PATCHING AND LONGITUDINAL JOINT REPAIR ON IL 29 FROM NORTH OF LORENTZ AVE. TO NORTH OF GARDNER LN.

STATE OF ILLINOIS  
DEPARTMENT OF TRANSPORTATION

SUBMITTED April 28, 2022  
[Signature] REGIONAL ENGINEER

June 10, 2022 [Signature] ENGINEER OF DESIGN AND ENVIRONMENT

June 10, 2022 [Signature] DIRECTOR OF HIGHWAYS PROJECT IMPLEMENTATION

PRINTED BY THE AUTHORITY  
OF THE STATE OF ILLINOIS

## GENERAL NOTES

### COMMITMENTS

Commitments are not to be altered without the written approval of all parties to which the commitment was made.  
No commitments have been made for this project.

### ENVIRONMENTAL REVIEWS

Prior to the use of any proposed borrow areas, use areas (temporary access roads, detours, run-arounds, etc.) and/or waste areas, the Contractor shall file the required environmental resource request surveys according to Section 107.22 of the Standard Specifications. These surveys are required in order for the Department to conduct cultural and biological resource surveys for the proposed site.

The required environmental resource documentation shall include the following:

- \* BDE Form 2289 (Borrow Site Review)
- \* BDE Form 2290 (Waste/Use Area Review)
- \* A location map showing the size limits and location of the use area
- \* Color photographs depicting the use area
- \* Borrow Area Entry Agreement form – D4 PI0101

Prior to any waste materials being removed from the construction site the required environmental resource surveys shall be obtained and filed by the Contractor. Excess waste products removed from the construction site shall be disposed of as required in Section 202.03 of the Standard Specifications.

Any protruding metal bars shall be removed prior to the disposal of broken concrete at approved disposal sites.

Please note that a minimum of four weeks shall be allowed for the District to obtain the required waste site environmental clearances and six weeks for the required borrow site environmental clearances.

### HOT-MIX ASPHALT MIXTURE REQUIREMENTS

<b>Mixture Use(s):</b>	<b>PARTIAL DEPTH PATCHING AND LONGITUDINAL JOINT REPAIR (ALL LIFTS)</b>
<b>AC/PG:</b>	<b>PG 58-28</b>
<b>Design Air Voids:</b>	<b>4.0% N= 50</b>
<b>Mixture Composition:</b>	<b>IL-9.5</b>
<b>(Mixture Gradation)</b>	
<b>Friction Aggregate:</b>	<b>MIX C</b>
<b>Quality Management Program:</b>	<b>QCQA</b>
<b>MTD (YES OR NO):</b>	<b>NO</b>

## PROJECT SPECIFIC NOTES

The Contractor shall fill the void under the outside edge of the existing northbound pavement approximately 2,250 feet from the south end of the project with controlled low strength material as directed by the Engineer. This work will be paid for in accordance with Article 109.04 of the Standard Specifications.

The Contractor shall have a qualified electrical contractor locate all of the existing detector loops, lead-ins, and detector loop risers along IL Route 29 at the intersection of Gardner Ln. Milling depths or limits shall be adjusted, as directed by the Engineer, to prevent the existing detector loops from being damaged. This work shall be included in the pay item Miscellaneous Electrical Work.

GPSD will adjust one manhole on southbound IL 29 at Terrace Ct. and one manhole on southbound IL 29 just south of Terrace Ct. The Contractor shall contact Mr. John Boyle (309-678-9035) with GPSD one week prior to lane closures on southbound IL 29 in the area of these structures. The Contractor shall coordinate traffic control with the adjustment work at these structures. This coordination shall be considered included in the cost of the provided traffic control pay items.

The Contractor shall sweep and pick up loose pieces of the deteriorating PCC median on IL 29 near Gardner Ln. to the satisfaction of the Engineer. The Contractor shall dispose of the material in accordance with Article 202.03 of the Standard Specifications. This work will be paid in accordance with Article 109.04 of the Standard Specifications.

MODEL: C:\Users\c1net\FILE NAME: \\h104g01a\DOT\DOT\45\h07\GEN\W\W\05\05\03\IL\_29\_patching\_68H07\Drawings\68H07\_Sheets.dgn

USER NAME = wrightmm PLOT SCALE = 100.0000' / in. PLOT DATE = 4/29/2022	DESIGNED - DRAWN - CHECKED - DATE -	REVISED - REVISED - REVISED - REVISED -	<b>STATE OF ILLINOIS DEPARTMENT OF TRANSPORTATION</b>	<b>GENERAL AND PROJECT SPECIFIC NOTES</b>	SCALE: SHEET OF SHEETS STA. TO STA.	F.A.P. RTE. SECTION COUNTY TOTAL SHEETS SHEET NO. 64 (12)PP;R5-8 PEORIA 14 2 CONTRACT NO. 68H07 ILLINOIS FED. AID PROJECT
---	--	--	---	---	-------------------------------------	--

CODE NO.	ITEM	UNIT	TOTAL QUANTITY	CONSTR. CODE
				100% STATE
				ROADWAY
				0006 URBAN
67100100	MOBILIZATION	L SUM	1	1
70102625	TRAFFIC CONTROL AND PROTECTION, STANDARD 701606	L SUM	1	1
70102634	TRAFFIC CONTROL AND PROTECTION, STANDARD 701611	L SUM	1	1
70107025	CHANGEABLE MESSAGE SIGN	CAL DA	28	28
70300100	SHORT TERM PAVEMENT MARKING	FOOT	3532	3532
70300150	SHORT TERM PAVEMENT MARKING REMOVAL	SQ FT	1177	1177
* 78001100	PAINT PAVEMENT MARKING - LETTERS AND SYMBOLS	SQ FT	65	65
* 78001110	PAINT PAVEMENT MARKING - LINE 4"	FOOT	51274	51274
* 78001130	PAINT PAVEMENT MARKING - LINE 6"	FOOT	6468	6468
* 78001140	PAINT PAVEMENT MARKING - LINE 8"	FOOT	1236	1236
* 78001150	PAINT PAVEMENT MARKING - LINE 12"	FOOT	58	58
* 78001180	PAINT PAVEMENT MARKING - LINE 24"	FOOT	13	13
* 78100100	RAISED REFLECTIVE PAVEMENT MARKER	EACH	647	647
* 78200020	CURB REFLECTORS	EACH	133	133

\*= SPECIALTY ITEM

MODEL: Quantities  
 FILE NAME: \\hwsa001\DOT\DOT\Sharepoint\GEN\WIN\ORD\ST\64\US\64031L\_29\_patching\_68H07\Drawings\68H07\_Sheets.dgn

USER NAME = wrightmm	DESIGNED -	REVISED -	<b>STATE OF ILLINOIS DEPARTMENT OF TRANSPORTATION</b>	<b>SUMMARY OF QUANTITIES</b>			F.A.P. RTE.	SECTION	COUNTY	TOTAL SHEETS	SHEET NO.
PLOT SCALE = 100.0000' / in.	DRAWN -	REVISED -					64	(12)PP;R5-8	PEORIA	14	3
PLOT DATE = 4/29/2022	CHECKED -	REVISED -		SCALE: SHEET 1 OF 2 SHEETS STA. TO STA.			CONTRACT NO. 68H07				
DATE -	REVISED -	REVISED -					ILLINOIS FED. AID PROJECT				

Model: Quantities  
FILE NAME: \\hp042\apps\DOT\DOT\Sharepoint\GEN\WV\GEN\WV\OR\DOT\68H07\Drawings\68H07\_Sheets.dgn

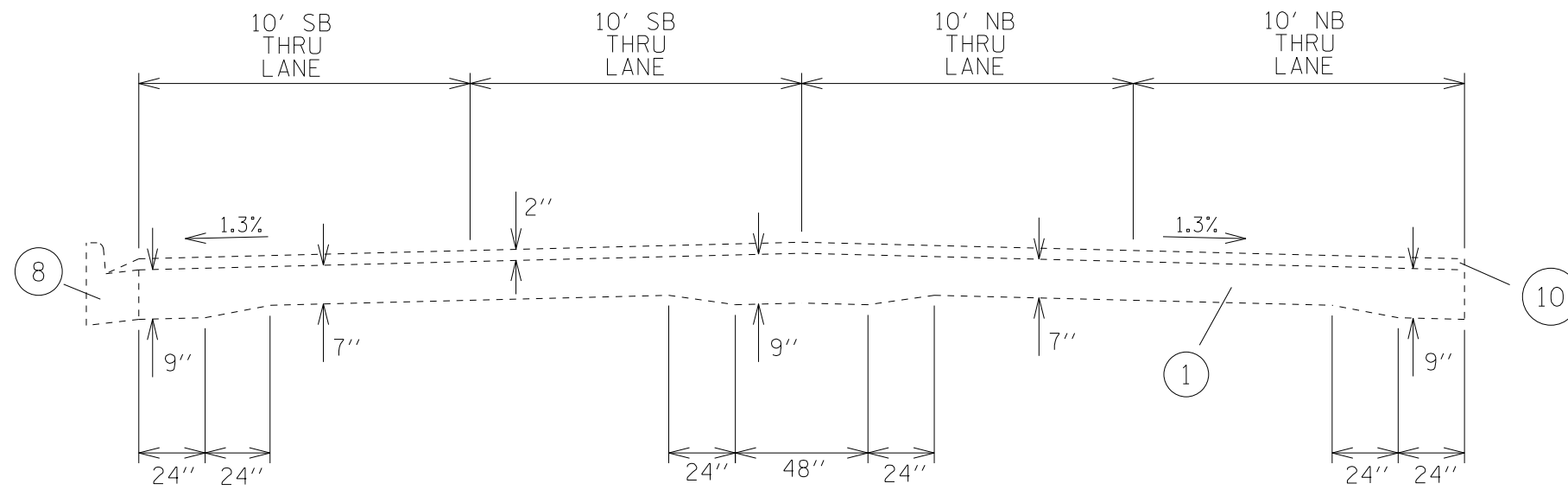
CONSTR. CODE

100% STATE  
ROADWAY  
0006  
URBAN

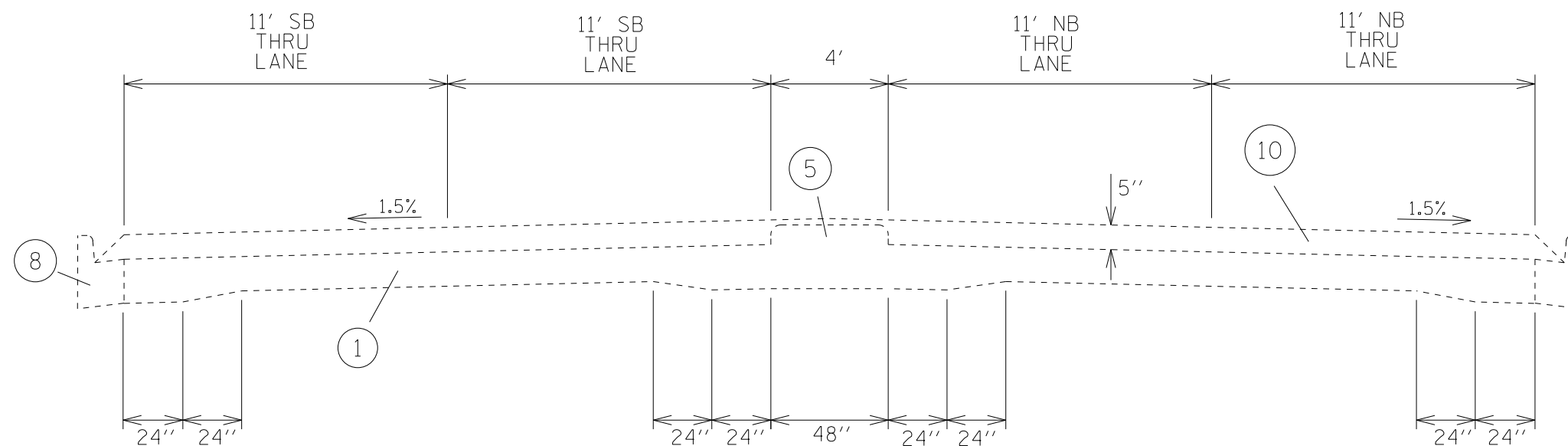
CODE NO.	ITEM	UNIT	TOTAL QUANTITY	
78300200	RAISED REFLECTIVE PAVEMENT MARKER REMOVAL	EACH	275	275
* X0327739	MISCELLANEOUS ELECTRICAL WORK	L SUM	1	1
X0556100	PARTIAL DEPTH PATCHING (SPECIAL)	SQ YD	2721	2721
X3200003	HOT-MIX ASPHALT SURFACE REMOVAL - LONGITUDINAL JOINT	SQ YD	8908	8908
X4421000	PARTIAL DEPTH PATCHING	TON	457	457
Z0033650	LONGITUDINAL JOINT REPAIR	TON	1122	1122

\* = SPECIALTY ITEM

USER NAME = wrightmm	DESIGNED -	REVISED -	<b>STATE OF ILLINOIS DEPARTMENT OF TRANSPORTATION</b>		<b>SUMMARY OF QUANTITIES</b>				F.A.P. RTE.	SECTION	COUNTY	TOTAL SHEETS	SHEET NO.
PLOT SCALE = 100.0000' / in.	DRAWN -	REVISED -			64	(12)PP;R5-8	PEORIA	14	4				
PLOT DATE = 4/29/2022	CHECKED -	REVISED -			CONTRACT NO. 68H07				ILLINOIS FED. AID PROJECT				
DATE -					SCALE:	SHEET 2	OF 2	SHEETS	STA.	TO STA.			



EXISTING TYPICAL SECTION 1



EXISTING TYPICAL SECTION 2

LEGEND

- ① EXISTING PCC PAVEMENT, VARIES 7" TO 9"
- ② EXISTING PCC PAVEMENT, 8"
- ③ EXISTING PCC PAVEMENT, 9 1/2"
- ④ EXISTING PCC BASE COURSE WIDENING, 8"
- ⑤ EXISTING PCC MEDIAN, 4"
- ⑥ EXISTING PCC MEDIAN, 6"
- ⑦ EXISTING PCC CORRUGATED MEDIAN (MODIFIED)
- ⑧ EXISTING TYPE B-6.12 CURB & GUTTER
- ⑨ EXISTING TYPE B-6.24 CURB & GUTTER
- ⑩ EXISTING HMA OVERLAY

MODEL: Existing Typical  
 FILE NAME: \\mhzp001\DOT\DOT\SHARED\PDGEN\WIN\ORD\ST&F\MS\Sau0031L 29 Patching 68H07\Drawings\68H07\_Sheets.dgn

USER NAME = wrightmm	DESIGNED -	REVISED -
PLOT SCALE = 40.0000' / in.	DRAWN -	REVISED -
PLOT DATE = 3/23/2022	CHECKED -	REVISED -
	DATE -	REVISED -

STATE OF ILLINOIS  
DEPARTMENT OF TRANSPORTATION

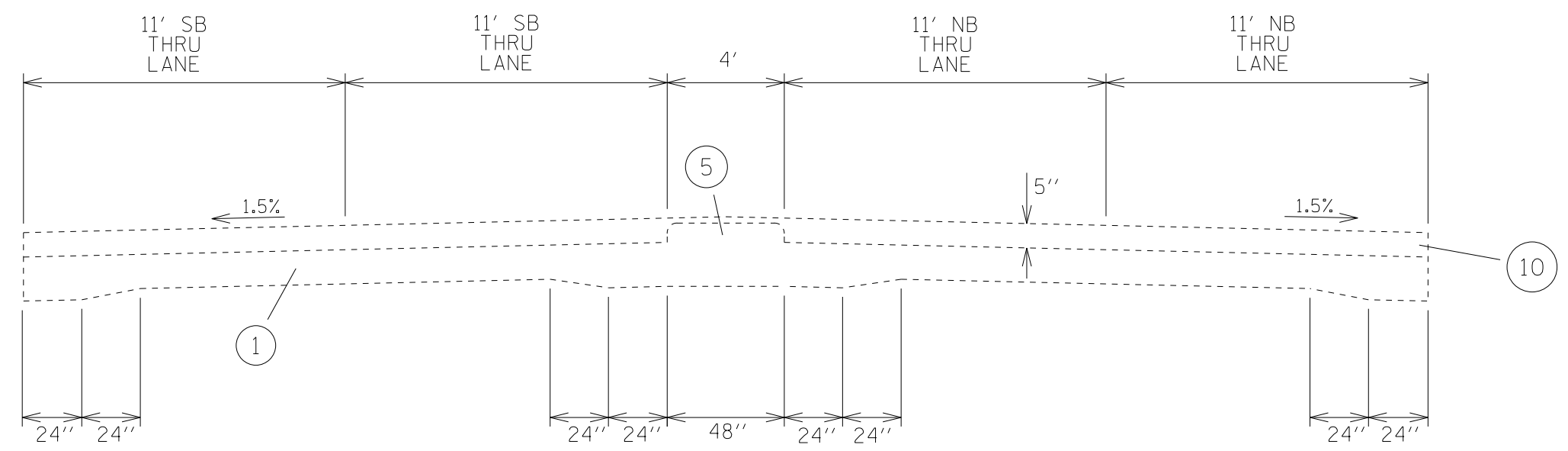
EXISTING TYPICAL SECTIONS

SCALE: SHEET 1 OF 3 SHEETS STA. TO STA.

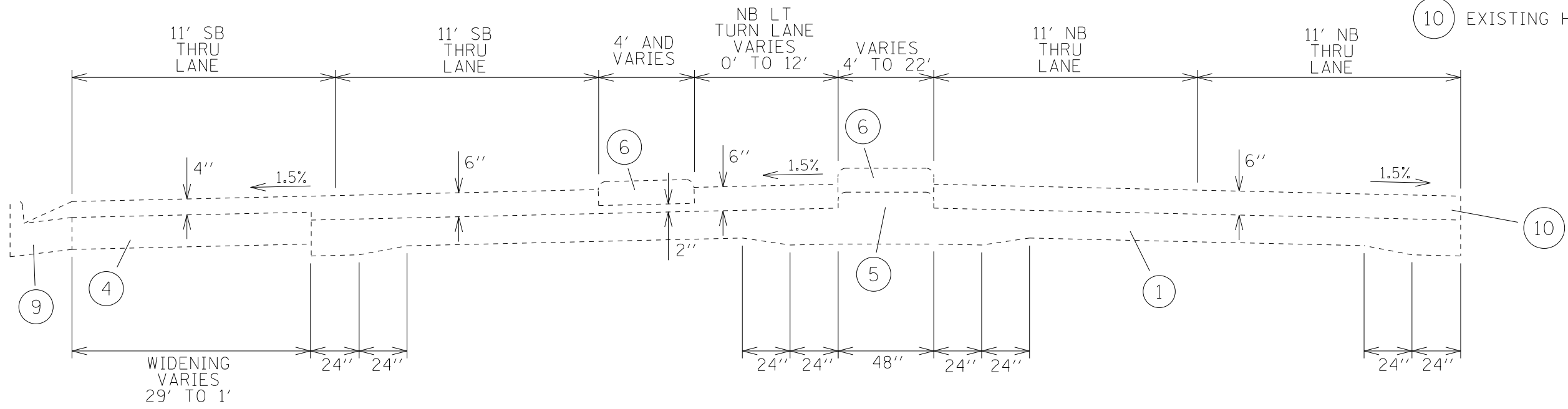
F.A.P. RTE.	SECTION	COUNTY	TOTAL SHEETS	SHEET NO.
64	(12)PP;R5-8	PEORIA	14	5
CONTRACT NO. 68H07				
ILLINOIS FED. AID PROJECT				

LEGEND

- ① EXISTING PCC PAVEMENT, VARIES 7" TO 9"
- ② EXISTING PCC PAVEMENT, 8"
- ③ EXISTING PCC PAVEMENT, 9 1/2"
- ④ EXISTING PCC BASE COURSE WIDENING, 8"
- ⑤ EXISTING PCC MEDIAN, 4"
- ⑥ EXISTING PCC MEDIAN, 6"
- ⑦ EXISTING PCC CORRUGATED MEDIAN (MODIFIED)
- ⑧ EXISTING TYPE B-6.12 CURB & GUTTER
- ⑨ EXISTING TYPE B-6.24 CURB & GUTTER
- ⑩ EXISTING HMA OVERLAY



EXISTING TYPICAL SECTION 3



EXISTING TYPICAL SECTION 4

MODEL: Existing Typical  
 FILE NAME: \\mhzp001\DOT\DOTS\share\pdr\GEN\WIN\WORK\05\STATE\68H07\Drawings\68H07\_Sheets.dgn

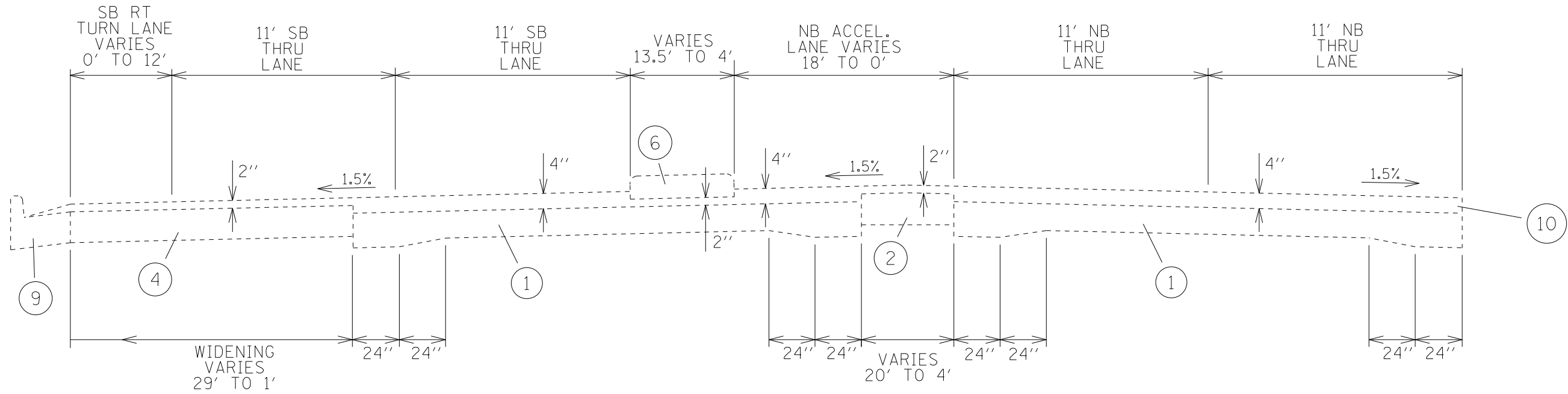
USER NAME = wrightmm	DESIGNED -	REVISED -
DRAWN -	REVISOR -	REVISOR -
PLOT SCALE = 40.0000' / in.	CHECKED -	REVISOR -
PLOT DATE = 3/23/2022	DATE -	REVISOR -

**STATE OF ILLINOIS  
DEPARTMENT OF TRANSPORTATION**

**EXISTING TYPICAL SECTIONS**

SCALE: SHEET 2 OF 3 SHEETS STA. TO STA.

F.A.P. RTE.	SECTION	COUNTY	TOTAL SHEETS	SHEET NO.
64	(12)PP;R5-8	PEORIA	14	6
CONTRACT NO. 68H07				
ILLINOIS FED. AID PROJECT				



EXISTING TYPICAL SECTION 5

LEGEND

- ① EXISTING PCC PAVEMENT, VARIES 7" TO 9"
- ② EXISTING PCC PAVEMENT, 8"
- ③ EXISTING PCC PAVEMENT, 9 1/2"
- ④ EXISTING PCC BASE COURSE WIDENING, 8"
- ⑤ EXISTING PCC MEDIAN, 4"
- ⑥ EXISTING PCC MEDIAN, 6"
- ⑦ EXISTING PCC CORRUGATED MEDIAN (MODIFIED)
- ⑧ EXISTING TYPE B-6.12 CURB & GUTTER
- ⑨ EXISTING TYPE B-6.24 CURB & GUTTER
- ⑩ EXISTING HMA OVERLAY

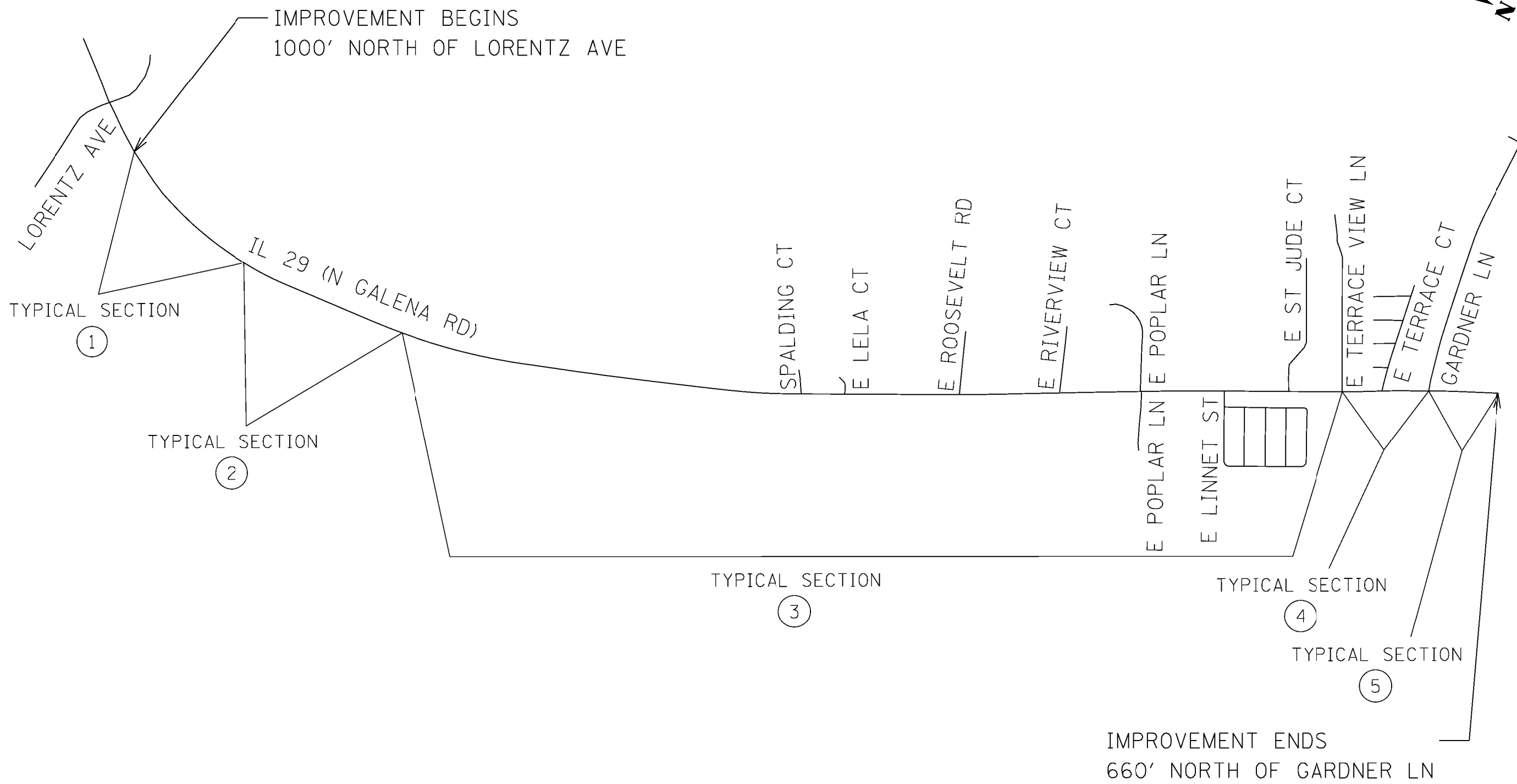
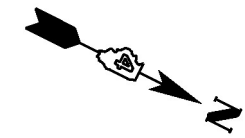
MODEL: Existing Typical  
 FILE NAME: \\m0201001\DOT\DOT\Drawings\68H07\Drawings\68H07\_Sheets.dgn

USER NAME = wrightmm	DESIGNED -	REVISED -
	DRAWN -	REVISED -
PLOT SCALE = 40.0000' / in.	CHECKED -	REVISED -
PLOT DATE = 3/23/2022	DATE -	REVISED -

**STATE OF ILLINOIS  
DEPARTMENT OF TRANSPORTATION**

<b>EXISTING TYPICAL SECTIONS</b>			
SCALE:	SHEET 3	OF 3	SHEETS
	STA.		TO STA.

F.A.P. RTE.	SECTION	COUNTY	TOTAL SHEETS	SHEET NO.
64	(12)PP:R5-8	PEORIA	14	7
CONTRACT NO. 68H07				
ILLINOIS FED. AID PROJECT				



MODEL: Line Diagram  
 FILE NAME: \\mms\gou\DOT\DESIGN\PROJECTS\GEN\WIN\ORD\STDAE\N5\Squid3IL\_29\_Patching\_68H07\Drawings\68H07\_Sheets.dgn

USER NAME = wrightmm	DESIGNED -	REVISED -
	DRAWN -	REVISED -
PLOT SCALE = 2916.0000' / in.	CHECKED -	REVISED -
PLOT DATE = 3/23/2022	DATE -	REVISED -

**STATE OF ILLINOIS  
DEPARTMENT OF TRANSPORTATION**

<b>LINE DIAGRAM</b>			
SCALE:	SHEET	OF SHEETS	STA. TO STA.

F.A.P. RTE.	SECTION	COUNTY	TOTAL SHEETS	SHEET NO.
64	(12)PP;R5-8	PEORIA	14	8
CONTRACT NO. 68H07				
ILLINOIS FED. AID PROJECT				



PAVEMENT MARKING SCHEDULE														
LOCATION	70300100	70300150	78001100	78001180	78001150		78001140	78001130	78001110		78100100	78300200	78200020	
	SHORT TERM PAVEMENT MARKING	SHORT TERM PAVEMENT MARKING REMOVAL	PAINT PAVEMENT MARKING - LETTERS AND SYMBOLS	PAINT PAVEMENT MARKING - LINE 24"	PAINT PAVEMENT MARKING - LINE 12"		PAINT PAVEMENT MARKING - LINE 8"	PAINT PAVEMENT MARKING - LINE 6"	PAINT PAVEMENT MARKING - LINE 4"		RAISED REFLECTIVE PAVEMENT MARKER	RAISED REFLECTIVE PAVEMENT MARKER REMOVAL	CURB REFLECTORS	
IL 29	FOOT	SQ.FT	SQ.FT	FOOT	FOOT	FOOT	FOOT	FOOT	FOOT	FOOT	FOOT	EACH	EACH	EACH
PROJECT LENGTH	3532	1177	65	13	11	47	1236	6468	25872	25402	647	275	133	
<b>TOTAL</b>	<b>3532</b>	<b>1177</b>	<b>65</b>	<b>13</b>	<b>58</b>		<b>1236</b>	<b>6468</b>	<b>51274</b>		<b>647</b>	<b>275</b>	<b>133</b>	

PATCHING SCHEDULE										
LOCATION	WIDTH	LENGTH	NUMBER OF PATCHES						X0556100	X4421000
			NORTHBOUND			SOUTHBOUND			PARTIAL DEPTH PATCHING (SPECIAL)	PARTIAL DEPTH PATCHING
			FOOT	FOOT	CENTERLINE	PASSING LANE	DRIVING LANE	CENTERLINE	PASSING LANE	DRIVING LANE
IL 29	4	11		57	55		34	39	904.4	151.9
	6	11		15	15		9	7	337.3	56.7
	8	11		7	5				117.3	19.7
	20	11					1	1	48.9	8.2
	50	11			1				61.1	10.3
	100	11					1		122.2	20.5
	16	8						1	14.2	2.4
	20	6						1	13.3	2.2
	60	4				1			26.7	4.5
	2	2340			1*				520.0	87.4
2	2500			1**				555.6	93.3	
<b>TOTAL</b>									<b>2721</b>	<b>457</b>

CHANGEABLE MESSAGE SIGN SCHEDULE	
LOCATION	70107025
	CHANGEABLE MESSAGE SIGN
	CAL DA
NORTH END	14
SOUTH END	14
<b>TOTAL</b>	<b>28</b>

NOTE:

\*REPRESENTS LONGITUDINAL PARTIAL DEPTH PATCH ON OUTSIDE EDGE FROM BEGINNING OF CURB (APPROX. 1500' N OF S END OF PROJECT) TO END OF CURB.

\*\*REPRESENTS LONGITUDINAL PARTIAL DEPTH PATCH ON OUTSIDE EDGE FROM LINNET ST. TO N END OF PROJECT.

LONGITUDINAL JOINT REPAIR SCHEDULE								
LOCATION	NORTHBOUND			SOUTHBOUND			Z0033650	X3200003
	INSIDE EDGE	CENTERLINE	OUTSIDE EDGE	INSIDE EDGE	CENTERLINE	OUTSIDE EDGE	LONGITUDINAL JOINT REPAIR	HOT-MIX ASPHALT SURFACE REMOVAL - LONGITUDINAL JOINT
IL 29	FOOT	FOOT	FOOT	FOOT	FOOT	FOOT	TON	SQ YD
South end of project to north end of project	12936	12936			13366*	850**	1122.5	8908.4
<b>TOTAL</b>							<b>1122</b>	<b>8908</b>

NOTE:

\*REPRESENTS 2' CENTERLINE JOINT REPAIR FOR LENGTH OF PROJECT, AND 4' CENTERLINE JOINT REPAIR FROM S OF ST. JUDE ST. TO CROSSFIT 309 ENTRANCE, AND FROM TERRACE VIEW LN. TO ST. JUDE ST.

\*\*REPRESENTS 2' OUTSIDE EDGE JOINT REPAIR FROM SOUTH END OF THE PROJECT TO NORTH END OF TURNAROUND WITH OVERHEAD SIGN.

MODEL: Quantities  
FILE NAME: \\hwsa\g01\DOT\DOT\Sharepoint\GEN\W\W\06\05\03\IL\_29\_patching\_68H07\Drawings\68H07\_Sheets.dgn

USER NAME = wrightmm	DESIGNED -	REVISED -
	DRAWN -	REVISED -
PLOT SCALE = 100.0000' / in.	CHECKED -	REVISED -
PLOT DATE = 4/28/2022	DATE -	REVISED -

**STATE OF ILLINOIS  
DEPARTMENT OF TRANSPORTATION**

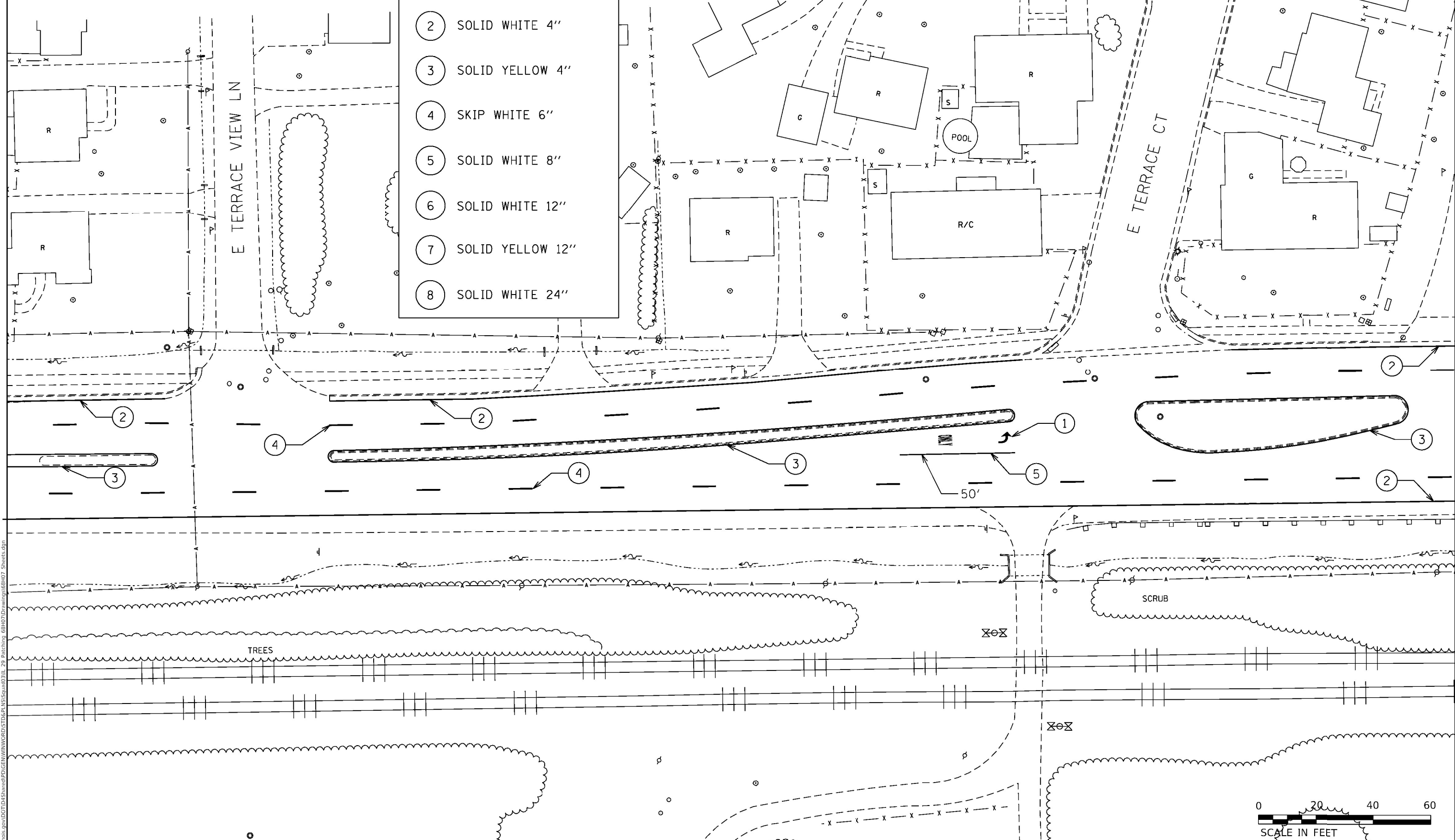
**SCHEDULES OF QUANTITIES**

SCALE: SHEET 1 OF 1 SHEETS STA. TO STA.

F.A.P. RTE.	SECTION	COUNTY	TOTAL SHEETS	SHEET NO.
64	(12)PP;R5-8	PEORIA	14	9
CONTRACT NO. 68H07				
ILLINOIS FED. AID PROJECT				



LEGEND	
①	LETTERS AND SYMBOLS
②	SOLID WHITE 4"
③	SOLID YELLOW 4"
④	SKIP WHITE 6"
⑤	SOLID WHITE 8"
⑥	SOLID WHITE 12"
⑦	SOLID YELLOW 12"
⑧	SOLID WHITE 24"



MODEL: Pavement Marking Detail  
 FILE NAME: \\illinois.gov\DOT\GIS\SharePoint\GIS\Projects\68H07\Drawings\68H07\_Sheets.dwg

USER NAME = wrightmm	DESIGNED -	REVISED -
PLOT SCALE = 40.0000' / in.	DRAWN -	REVISED -
PLOT DATE = 3/23/2022	CHECKED -	REVISED -
	DATE -	REVISED -

**STATE OF ILLINOIS**  
**DEPARTMENT OF TRANSPORTATION**

**PAVEMENT MARKING DETAIL**

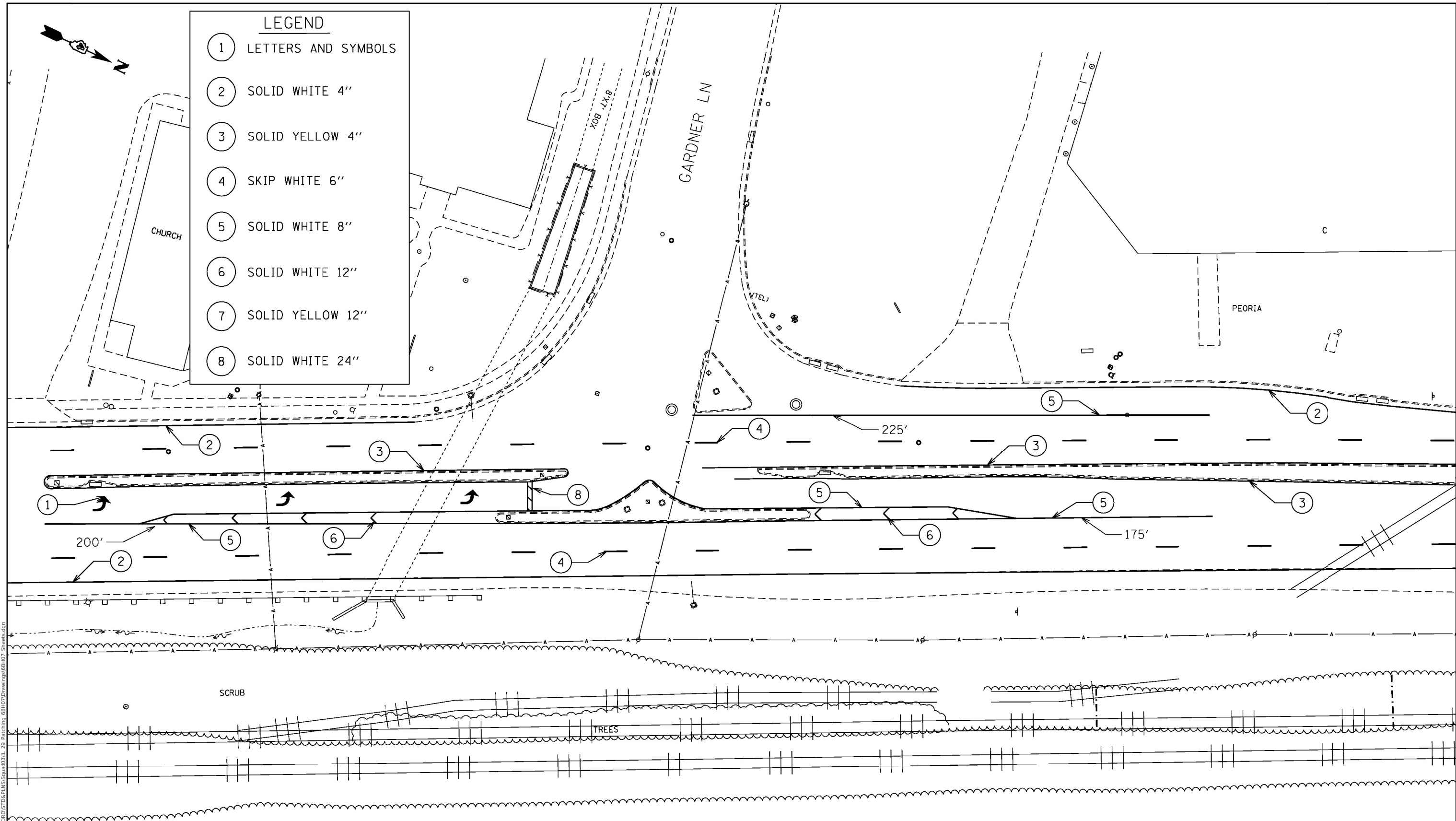
SCALE: 1" = 20'    SHEET 1 OF 3 SHEETS    STA.    TO STA.



F.A.P. RTE.	SECTION	COUNTY	TOTAL SHEETS	SHEET NO.
64	(12)PP;R5-8	PEORIA	14	10
CONTRACT NO. 68H07				
ILLINOIS FED. AID PROJECT				



LEGEND	
①	LETTERS AND SYMBOLS
②	SOLID WHITE 4"
③	SOLID YELLOW 4"
④	SKIP WHITE 6"
⑤	SOLID WHITE 8"
⑥	SOLID WHITE 12"
⑦	SOLID YELLOW 12"
⑧	SOLID WHITE 24"



NOTE:  
CHEVRONS SPACED AT 30' (CENTER TO CENTER)



MODEL: Pavement Marking Detail  
FILE NAME: \\illinois.gov\DOT\GIS\SharePoint\GIS\Projects\68H07\Drawings\68H07\_Sheets.dgn

USER NAME = wrightmm	DESIGNED -	REVISED -
PLOT SCALE = 40.0000' / in.	DRAWN -	REVISED -
PLOT DATE = 3/23/2022	CHECKED -	REVISED -
	DATE -	REVISED -

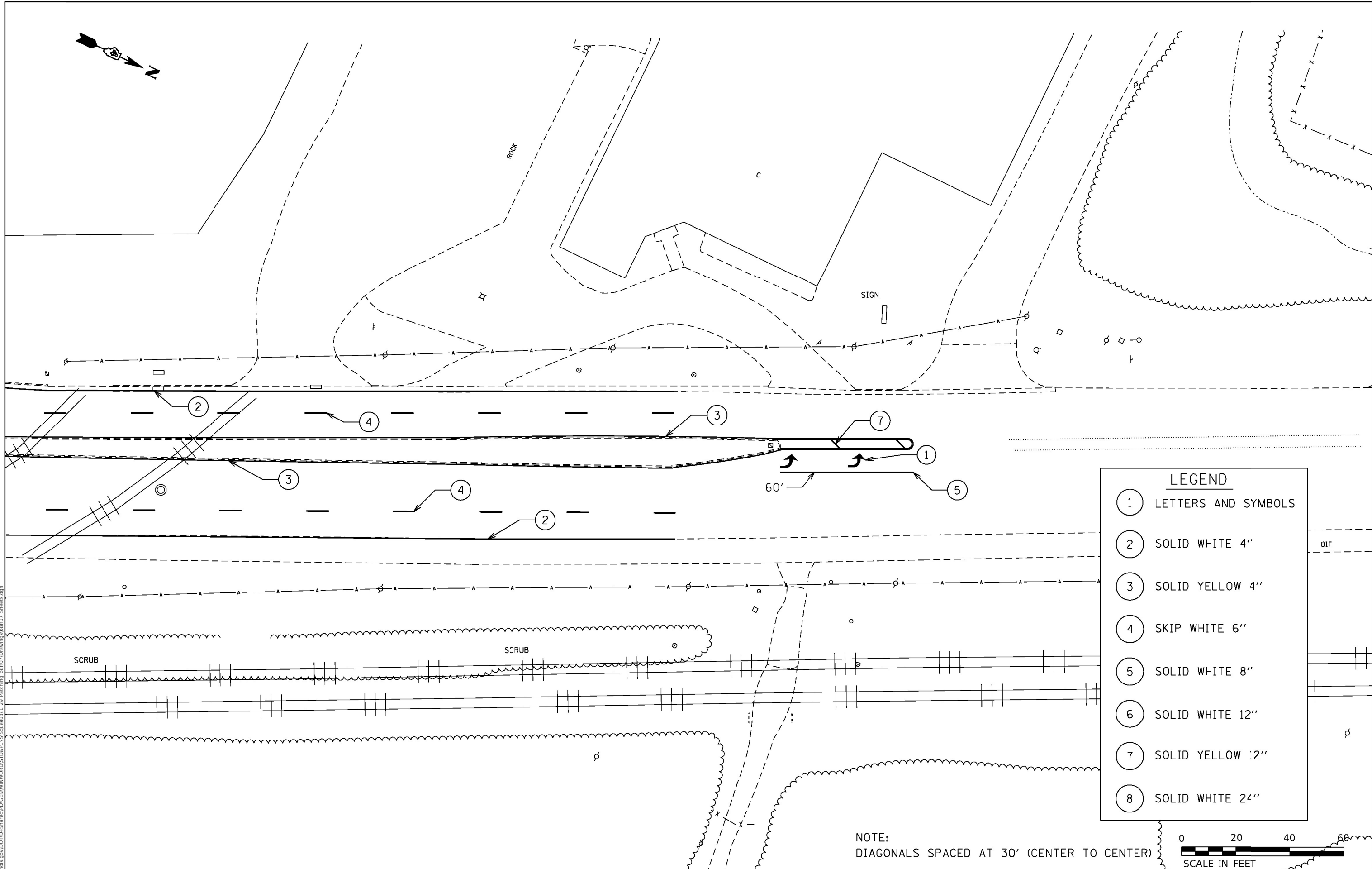
**STATE OF ILLINOIS  
DEPARTMENT OF TRANSPORTATION**

**PAVEMENT MARKING DETAIL**

SCALE: 1" = 20' SHEET 2 OF 3 SHEETS STA. TO STA.

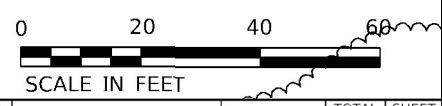
F.A.P. RTE.	SECTION	COUNTY	TOTAL SHEETS	SHEET NO.
64	(12)PP;R5-8	PEORIA	14	11
CONTRACT NO. 68H07				

ILLINOIS FED. AID PROJECT



LEGEND	
1	LETTERS AND SYMBOLS
2	SOLID WHITE 4"
3	SOLID YELLOW 4"
4	SKIP WHITE 6"
5	SOLID WHITE 8"
6	SOLID WHITE 12"
7	SOLID YELLOW 12"
8	SOLID WHITE 24"

NOTE:  
DIAGONALS SPACED AT 30' (CENTER TO CENTER)



MODEL: Pavement Marking Detail  
FILE NAME: \\illinois.gov\DOT\GIS\SharePoint\GEN\WIN\ORD\STDAF\NS\Scrub031L 29 Patching\_68H07\Drawings\68H07\_Sheets.dgn

USER NAME = wrightmm	DESIGNED -	REVISED -
PLOT SCALE = 40.0000' / in.	DRAWN -	REVISED -
PLOT DATE = 3/23/2022	CHECKED -	REVISED -
	DATE -	REVISED -

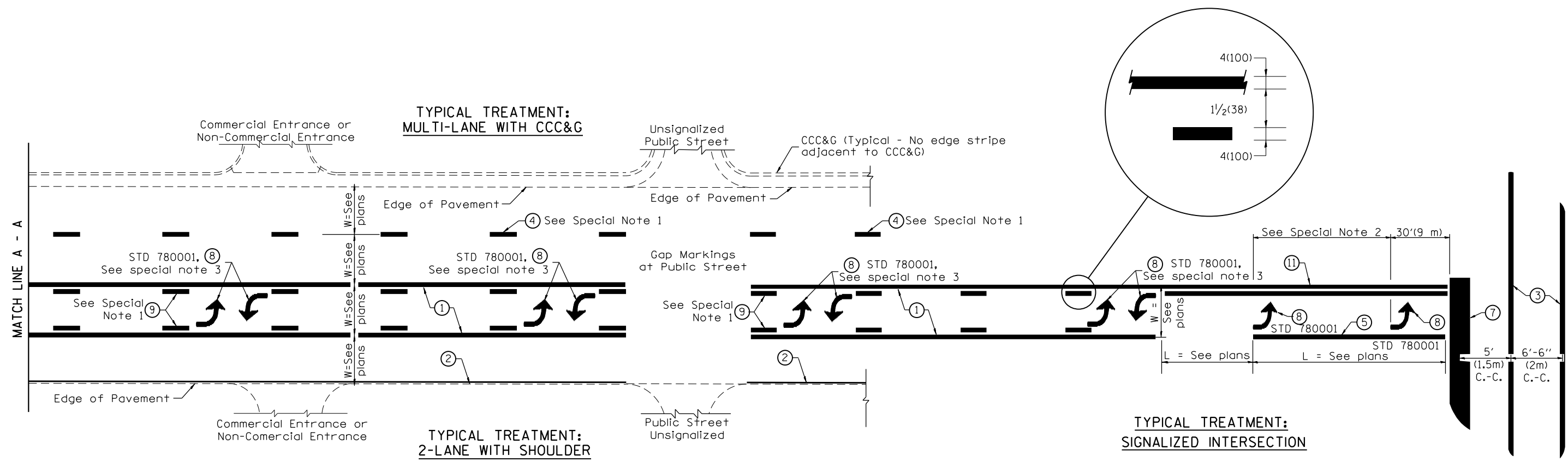
**STATE OF ILLINOIS  
DEPARTMENT OF TRANSPORTATION**

**PAVEMENT MARKING DETAIL**

SCALE: 1" = 20' SHEET 3 OF 3 SHEETS STA. TO STA.

F.A.P. RTE.	SECTION	COUNTY	TOTAL SHEETS	SHEET NO.
64	(12)PP;R5-8	PEORIA	14	12

CONTRACT NO. 68H07  
ILLINOIS FED. AID PROJECT



**FLUSH PAVED MEDIAN: TWO-WAY LEFT TURN LANE WITH ONE-WAY LEFT TURN LANE AT SIGNALIZED INTERSECTION**

**TYPICAL PAVEMENT MARKING LEGEND**

(Note: This is a District Standard Legend. Some elements may not apply to specific project.)

- ① 4(100) Solid (Yellow)
- ② 4(100) Solid (White)
- ③ 2-6(150) Crosswalk @ 6'-6" (2m)min C.-C. (White)  
2-8(200) Crosswalk @ 6'-6" (2m)min C.-C. (White) (When traffic signals are present.)
- ④ 6(150) Skip-Dash (White) (See Special Note 1)
- ⑤ 8(200) Solid (White)
- ⑥ 12(300) Diagonal (White) (Item ⑥ is shown on Std. 780001)
- ⑦ 24(600) Stop Bar (White)
- ⑧ Letters & Arrows (See Std. 780001 and Special Notes 2 & 3)
- ⑨ 4(100) Skip-Dash (Yellow) (See Special Note 1)
- ⑩ 12(300) Diagonal (Yellow) (See Table A) ⑩
- ⑪ 4(100) Double Solid (Yellow) ⑪

**SPECIAL NOTES**

1. Skip-Dash markings will be centered between both ends of city blocks and shall be placed in alignment transversely across the pavement.
2. The following shall apply to arrows located in one-way left turn lanes:
  - A. A minimum of two (2) arrows is required.
  - B. The maximum spacing between arrows is 80' (24 m).
  - C. Arrows shall be evenly spaced if three (3) or more are required.
3. The following shall apply to arrow pairs located in two-way left turn lanes:
  - A. A minimum of two (2) arrow pairs is required.
  - B. The maximum spacing between arrow pairs is 200' (61 m).
  - C. Arrow pairs shall be evenly spaced if three (3) or more are required.
  - D. The spacing between Bi Directional Left Turn Arrows is 33' (10 m).

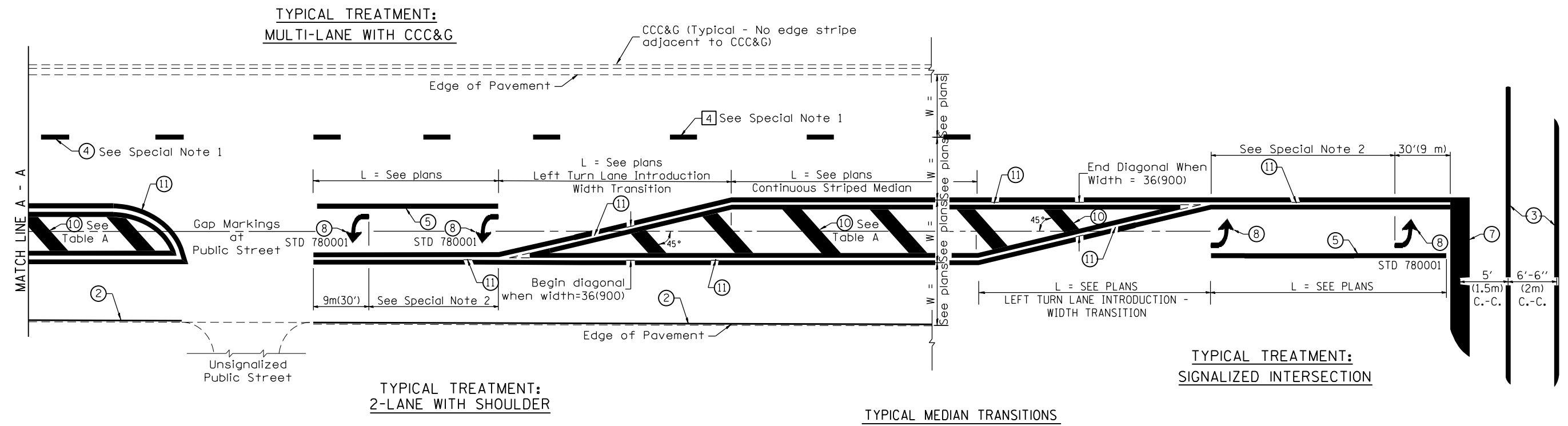
**GENERAL NOTES**

1. Refer to State Standard 780001 for additional Pavement Markings including letters & arrows.
2. See Plans for Pavement Markings adjacent to curbed islands and medians, and through lane reductions.
3. Refer to Article 780.13 for letter, number and symbol areas (sq. ft.)
4. Areas are grooved 1" beyond each edge for the following symbols:  
Through Arrow= 14.8 sq. ft.  
Large Left or Right Arrow= 21.9 sq. ft.  
2 Arrow Combination Left (or Right) and Through= 34.9 sq. ft.  
Wrong Way Arrow= 29.5 sq. ft.  
Railroad Crossing Symbol= 69.8 sq. ft.  
(For further information, refer to BDE Special Provision: Grooving for Recessed Pavement Markings)

01-01-97	RENUM. F-8.03, NEW REVISION BOX	T.P.	10-16-06	REVISED TO 2007 SPEC.		<b>STATE OF ILLINOIS DEPARTMENT OF TRANSPORTATION</b>	<b>TYPICAL PAVEMENT MARKINGS</b>	F.A.P. RTE.	SECTION	COUNTY	TOTAL SHEETS	SHEET NO.	
02-07-97	ADD BI DIRECTIONAL DIMENSION	J.A.	2/29/16	ADDED GROOVING AREAS	R.D.			64	(12)PP;RS-B	PEORIA	14	13	
10-97	CORRECT BI DIRECTIONAL DIMENSION	J.A.	07-16-19	SPELLING CORRECTIONS	R.D.			SHT. 1 OF 2 CADD STD. 780001-D4					
08-02	ADD CROSSWALK DMNS. WITH T.S.	M.A.						CONTRACT NO. 68H07					

NOT TO SCALE

FED. ROAD DIST. NO. ILLINOIS FED. AID PROJECT



TYPICAL TREATMENT:  
MULTI-LANE WITH CCC&G

TYPICAL TREATMENT:  
2-LANE WITH SHOULDER

TYPICAL MEDIAN TRANSITIONS

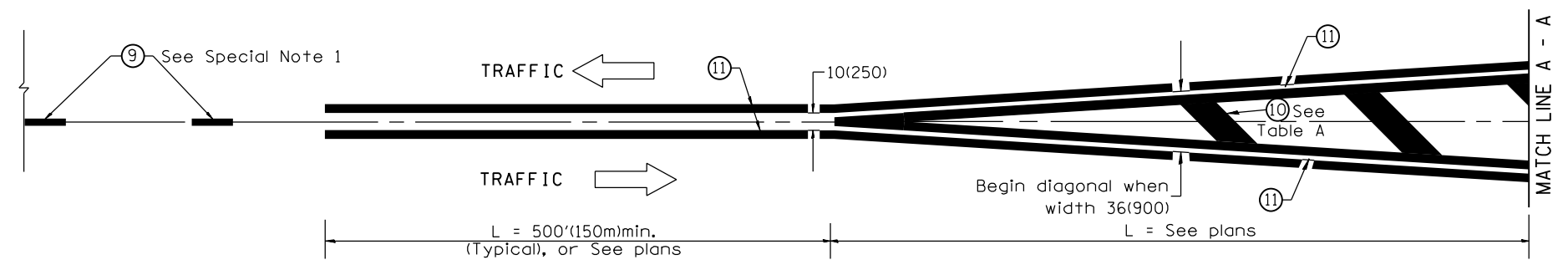
TYPICAL TREATMENT:  
SIGNALIZED INTERSECTION

FLUSH PAVED MEDIAN: RESTRICTED LEFT TURN LANE

TABLE A

RECOMMENDED SPACING BETWEEN DIAGONAL LINES

SPEED LIMIT RANGE	CONTINUOUS	INTERSECTION CHANNELIZATION (Includes Width Transitions for Median and Left Turn Lane Introductions)
Less Than 30 mph (50 km/h)	50' (15m)	15' (5m)
30 - 45 mph (50 - 70 km/h)	75' (23m)	20' (6m)
Over 45 mph (70 km/h)	150' (46m)	30' (9m)



MEDIAN INTRODUCTION - WIDTH TRANSITIONS

All dimensions are in inches (millimeters) unless otherwise noted.