

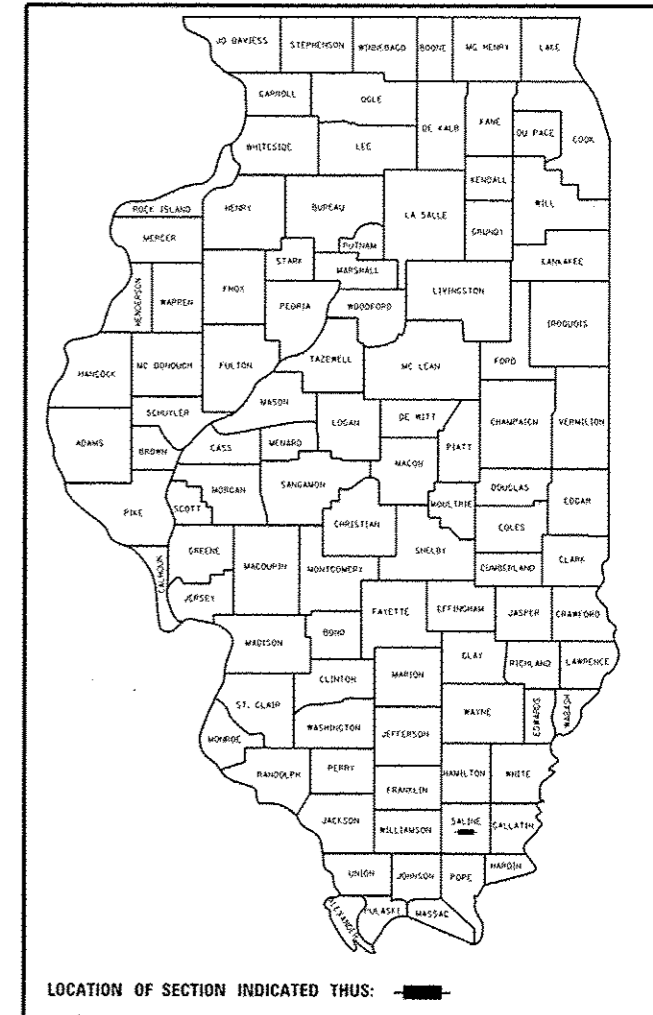
STATE OF ILLINOIS  
DEPARTMENT OF TRANSPORTATION  
DIVISION OF HIGHWAYS

**PROPOSED  
HIGHWAY PLANS**

FAP ROUTE 332 /FAP ROUTE 132  
IL 34 /US 45  
D9 CM PAVEMENT REPAIR 2017-1  
PAVEMENT REPAIR  
SALINE COUNTY

F.A.P. RTE.	SECTION	COUNTY	TOTAL SHEETS	SHEET NO.
132/332	D9 CM PAVEMENT REPAIR 2017-1	SALINE	7	1
		ILLINOIS	CONTRACT NO. 78529	

D-99-031-16



FOR INDEX OF SHEETS, SEE SHEET NO. 3  
FOR SUMMARY OF QUANTITIES, SEE SHEET NO. 4

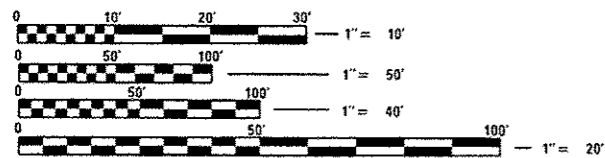
**TRAFFIC DATA**

US 45 /IL 34 (NORTH LEG)	2015 ADT = 13800 WITH 15.2% TRUCKS
US 45 /IL 34 (SOUTH LEG)	2015 ADT = 16700 WITH 14.1% TRUCKS
E. POPLAR (WEST LEG)	2015 ADT = 6400 WITH 5.9% TRUCKS
E. POPLAR (EAST LEG)	2015 ADT = 1950 WITH 11.8% TRUCKS

**POSTED SPEED LIMIT**

US 45 /IL 34 (NORTH LEG)	30 MPH
US 45 /IL 34 (SOUTH LEG)	30 MPH
E. POPLAR (WEST LEG)	30 MPH
E. POPLAR (EAST LEG)	30 MPH

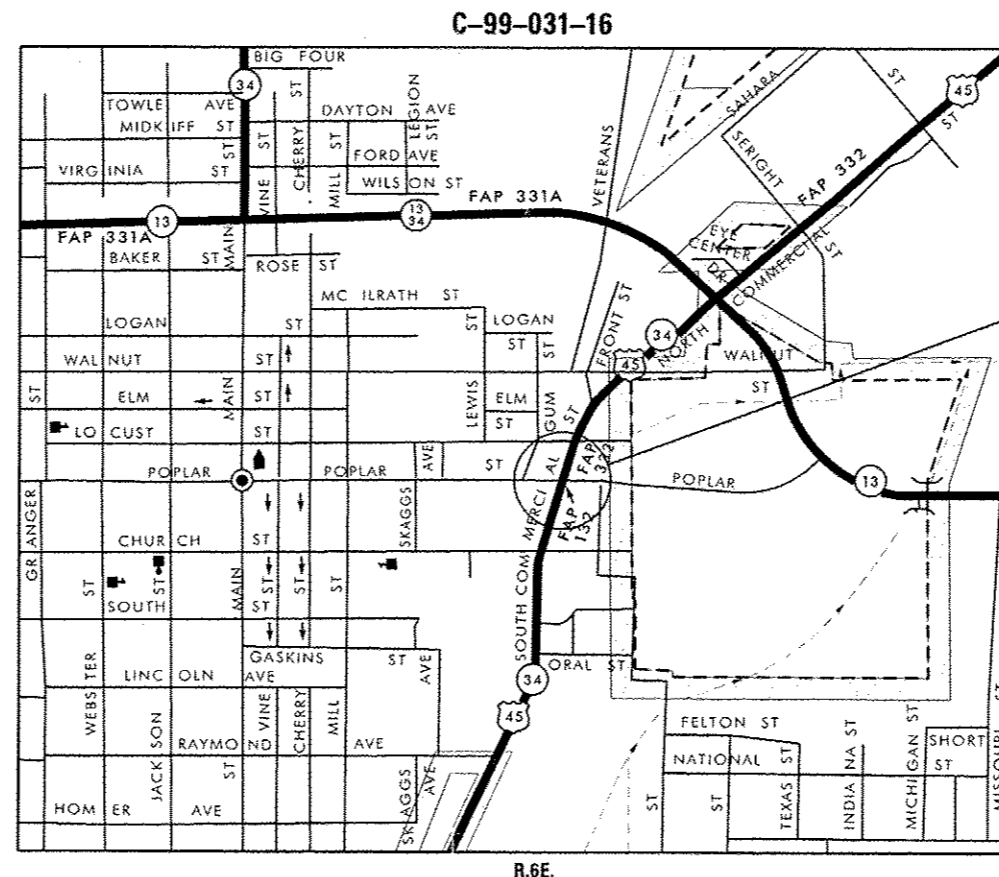
TOWNSHIP: HARRISBURG



FULL SIZE PLANS HAVE BEEN PREPARED USING STANDARD ENGINEERING SCALES. REDUCED SIZED PLANS WILL NOT CONFORM TO STANDARD SCALES. IN MAKING MEASUREMENTS ON REDUCED PLANS, THE ABOVE SCALES MAY BE USED.

J.U.L.I.E.  
JOINT UTILITY LOCATION INFORMATION FOR EXCAVATION  
1-800-892-0123  
OR 811

PROJECT ENGINEER: JARED HARP  
PROJECT MANAGER: SUSAN POE



PROJECT LOCATION (IL 34 / US 45)

STATE OF ILLINOIS  
DEPARTMENT OF TRANSPORTATION  
DIVISION OF HIGHWAYS

SUBMITTED May 17 2016

Jeffrey L. Keim  
REGION FIVE ENGINEER

July 1 2016  
Maulden M. Addis, P.E.  
ENGINEER OF DESIGN AND ENVIRONMENT

July 1 2016  
Michelle A. [Signature]  
DIRECTOR OF PROGRAM DEVELOPMENT

**PRINTED BY THE AUTHORITY  
OF THE STATE OF ILLINOIS**

GROSS LENGTH = 528 FT. = 0.100 MILE  
NET LENGTH = 528 FT. = 0.100 MILE

CONTRACT NO. 78529

Prepared By: [Signature]  
DISTRICT STUDIES & PLANS ENGINEER

Examined By: [Signature]  
DISTRICT LAND ACQUISITION ENGINEER

Examined By: [Signature]  
DISTRICT PROGRAM DEVELOPMENT ENGINEER

Examined By: [Signature]  
DISTRICT OPERATIONS ENGINEER

Examined By: [Signature]  
DISTRICT PROJECT IMPLEMENTATION ENGINEER

Examined By: [Signature]  
DISTRICT CONSTRUCTION ENGINEER

Examined By: [Signature]  
DISTRICT MATERIALS ENGINEER

STATE OF ILLINOIS  
DEPARTMENT OF TRANSPORTATION

SIGNATURE SHEET

FILE NAME =	USER NAME = hardja	DESIGNED -	REVISED -
p:\11\084EB\INTEG.illinois.gov\PW\DOT\Documents\DOT Offices\District 9\Projects\785		DRAWN (a\CAD\shenja\shj)te\topping.dgn	REVISED -
	PLOT SCALE = 100.0000 / in.	CHECKED -	REVISED -
	PLOT DATE = 5/16/2016	DATE -	REVISED -

SCALE: _____	SHEET NO. _____ OF _____ SHEETS	STA. _____ TO STA. _____
--------------	---------------------------------	--------------------------

F.A.P. RTE.	SECTION	COUNTY	TOTAL SHEETS	SHEET NO.
132/332/09 CM PAVEMENT REPAIR 2017-I	SALINE		7	2
ILLINOIS FED. AID PROJECT			CONTRACT NO. 78529	

**GENERAL NOTES**

ANY PAVEMENT MARKING THAT IS REMOVED OR DAMAGED DUE TO PATCHING OR WHITETOPPING REPAIR OPERATIONS WILL NOT BE REPLACED AS PART OF THIS CONTRACT.

QUANTITIES SHOWN IN THE PLANS FOR PATCHING ARE ESTIMATES. THE ACTUAL AMOUNT OF PATCHING REQUIRED WILL BE DETERMINED BY THE ENGINEER.

THE FURNISHING AND INSTALLATION OF THE 3.18 cm (1 IN.) CONDUIT WITH ITS TRENCHING AND BACKFILL FROM THE LOOP SAWCUT TO THE SPLICE POINT SHALL BE INCLUDED IN THE LOOP INSTALLATION UNLESS SHOWN OTHERWISE ON THE PLANS.

THE INDUCTION LOOP WIRE AND LEAD-IN WIRE SHALL BE INSTALLED IN ACCORDANCE WITH THE MANUFACTURER'S RECOMMENDATION.

SHIELDED CABLE TO LOOP LEADS SHALL BE GROUNDED AT THE CONTROLLER TERMINAL ONLY.

ALL DETECTOR LOOP CORNERS SHALL BE CORE DRILLED 5.08 cm (2 IN.) MINIMUM DIAMETER EXCEPT THOSE PLACED UNDER RESURFACING. THE DETECTOR LOOP CORNERS PLACED UNDER RESURFACING SHALL BE DIAGONALLY SAWCUT.

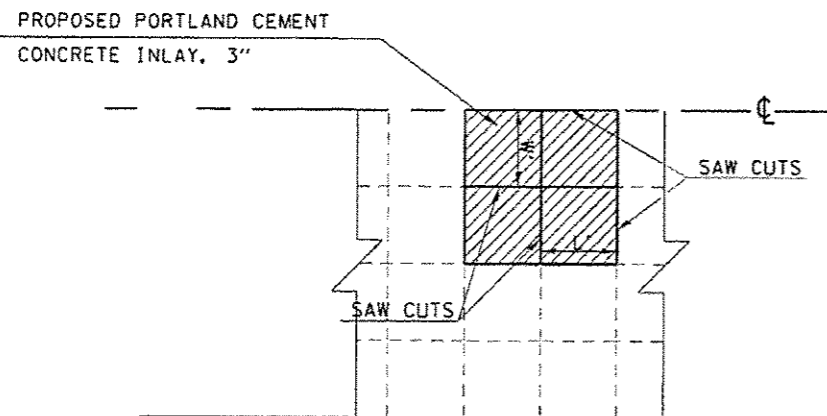
EXISTING SURFACE DISTURBED DURING EXCAVATION FOR FOUNDATIONS AND PUSH PITS SHALL BE RESTORED TO THE LIMITS AND CONDITION SPECIFIED BY THE ENGINEER OR AS SHOWN ON THE PLANS. UNLESS NOTED OTHERWISE ON THE PLANS THE REMOVAL AND RESTORATION SHALL BE INCLUDED IN THE CONTRACT.

SAWED SLOTS FOR TWISTED PAIR ELECTRIC CABLES SHALL BE LARGER THAN SINGLE CONDUCTOR LOOP SLOTS.

THE LOCATION OF THE DETECTOR LOOPS AND TRAFFIC SIGNAL FOUNDATIONS, AS SHOWN ON THE PLANS, MAY BE ADJUSTED TO FIT FIELD CONDITIONS AS DIRECTED BY THE ENGINEER OF TRAFFIC OPERATIONS.

THE CONTRACTOR SHALL NOTIFY THE ENGINEER OF TRAFFIC OPERATIONS 72 HOURS PRIOR TO THE SHUT-DOWN OR CUTTING OF EXISTING DETECTOR LOOPS.

**SAW CUTS FOR WHITETOPPING REPAIR**



SAW CUTS SHALL BE MADE AT ALL EXISTING JOINTS FOR PAVEMENT REMOVAL (SPECIAL) AND FOR PORTLAND CEMENT CONCRETE INLAY, 3"

**INDEX OF SHEETS**

- 1 COVER SHEET
- 2 SIGNATURE SHEET
- 3 GENERAL NOTES / INDEX OF SHEETS / LIST OF STANDARDS
- 4 SUMMARY OF QUANTITIES
- 5 TYPICAL SECTIONS
- 6 PAVEMENT REPAIR AND PATCHING SCHEDULE
- 7 PLAN SHEETS

**STANDARDS**

- 000001-06 STANDARD SYMBOLS, ABBREVIATIONS, AND PATTERNS
- 001001-02 AREAS OF REINFORCEMENT BARS
- 001006 DECIMAL OF AN INCH AND OF A FOOT
- 420701-03 PAVEMENT WELDED WIRE REINFORCEMENT
- 442101-07 CLASS B PATCHES
- 701502-06 URBAN LANE CLOSURE, 2L, 2W, WITH BIDIRECTIONAL LEFT TURN LANE
- 701602-07 URBAN LANE CLOSURE, MULTILANE, 2W WITH BIDIRECTIONAL LEFT TURN LANE
- 701701-10 URBAN LANE CLOSURE, MULTILANE INTERSECTION
- 701901-05 TRAFFIC CONTROL DEVICES
- 886001-01 DETECTOR LOOP INSTALLATIONS
- 886006-01 TYPICAL LAYOUTS FOR DETECTION LOOPS

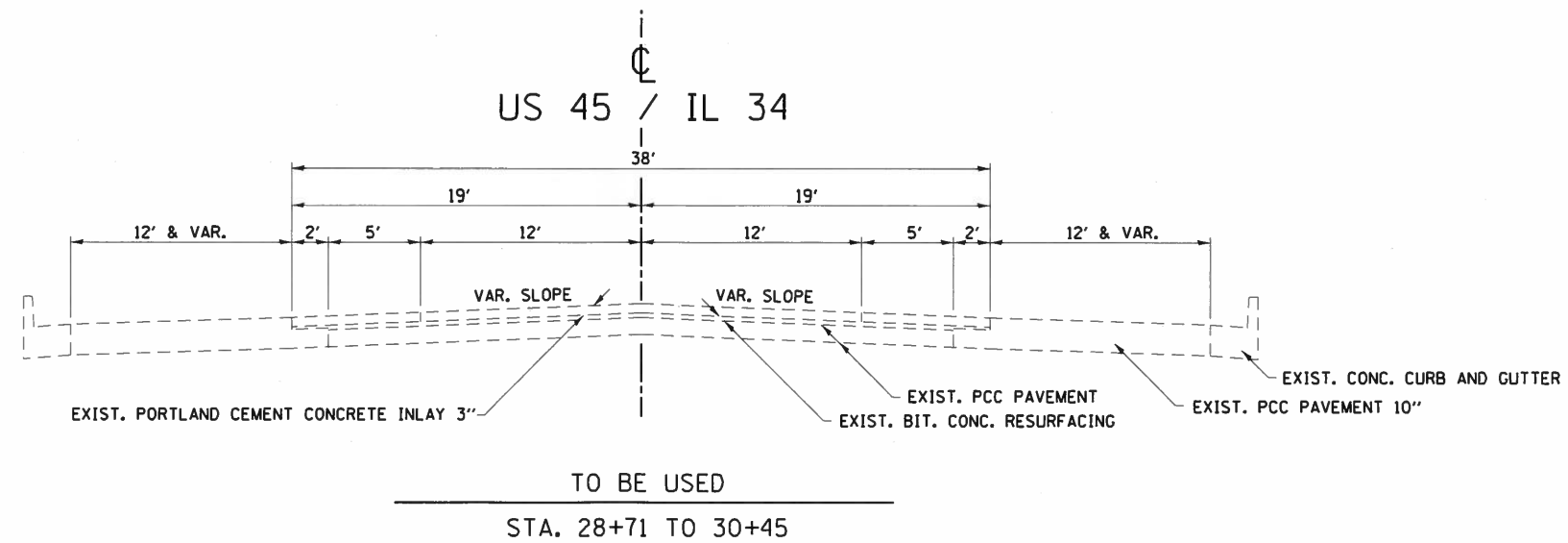
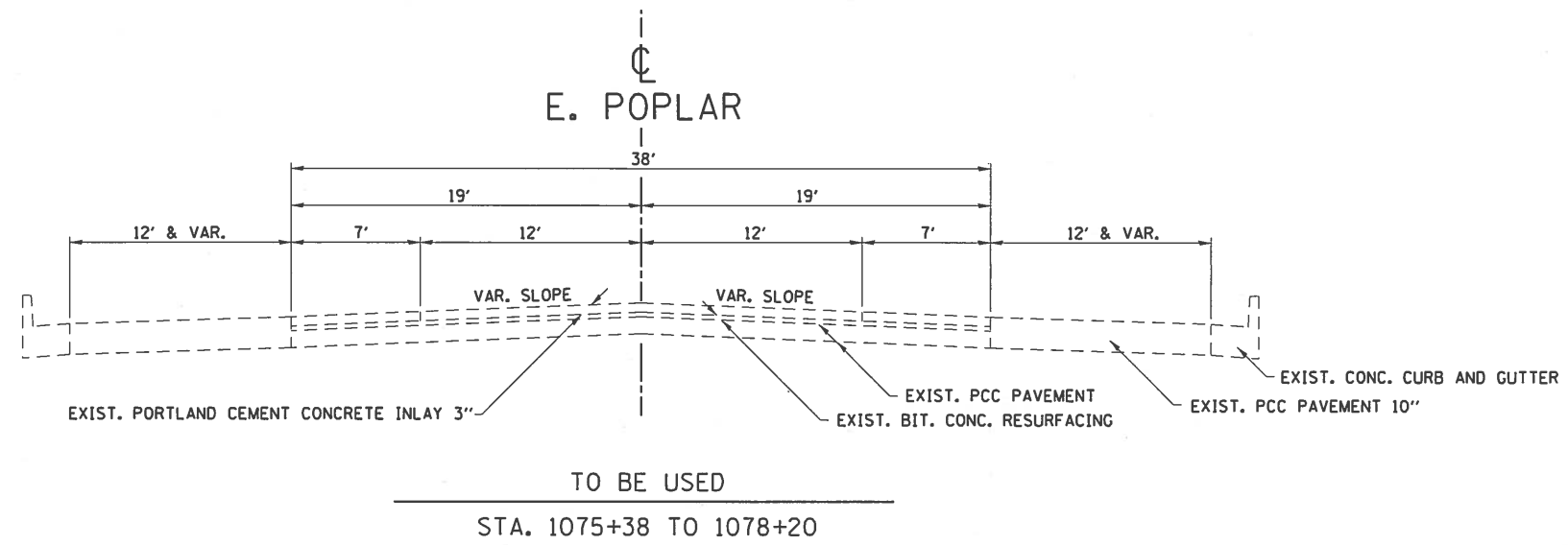
FILE NAME	USER NAME	DESIGNED	REVISED	<b>STATE OF ILLINOIS DEPARTMENT OF TRANSPORTATION</b>	<b>GENERAL NOTES, INDEX OF SHEETS, LIST OF STANDARDS</b>	F.A.P. RTE.	SECTION	COUNTY	TOTAL SHEETS	SHEET NO.
\\JL084610NTEG\illinois.gov\PI001-00	Documents\DOT Offices\District 9\Projects\08	DRAWN	REVISED			132/332 D9 CM PAVEMENT REPAIR 2017-1	SALINE	7	3	
PLOT SCALE	1:100	CHECKED	REVISED			CONTRACT NO. 78529				
PLOT DATE	5/16/2018	DATE	REVISED			ILLINOIS FED. AID PROJECT				

# SUMMARY OF QUANTITIES

COUNTY:	SALINE
ROUTE:	IL 34 / US 45, FAP 332 / FAP 132
FUNDING:	100% STATE
LOCATION:	URBAN
	ROADWAY
	0005

CODE NUMBER	ITEM DESCRIPTION	UNIT	TOTAL QUANTITY		
44200050	WELDED WIRE REINFORCEMENT	SO YD	181		181
44200976	CLASS B PATCHES, TYPE IV, 10 INCH	SO YD	181		181
44201299	DOWEL BARS 1 1/2"	EACH	84		84
44213200	SAW CUTS	FOOT	1,218		1,218
44213204	TIE BARS 3/4"	EACH	126		126
67100100	MOBILIZATION	LSUM	1		1
70102622	TRAFFIC CONTROL AND PROTECTION, STANDARD 701502	LSUM	1		1
70102632	TRAFFIC CONTROL AND PROTECTION, STANDARD 701602	LSUM	1		1
70102635	TRAFFIC CONTROL AND PROTECTION, STANDARD 701701	LSUM	1		1
70106800	CHANGEABLE MESSAGE SIGN	CAL MO	4		4
88600100	DETECTOR LOOP, TYPE I	FOOT	500		500
X4200830	PORTLAND CEMENT CONCRETE INLAY, 3"	SO YD	42		42
X4404400	PAVEMENT REMOVAL (SPECIAL)	SO YD	42		42

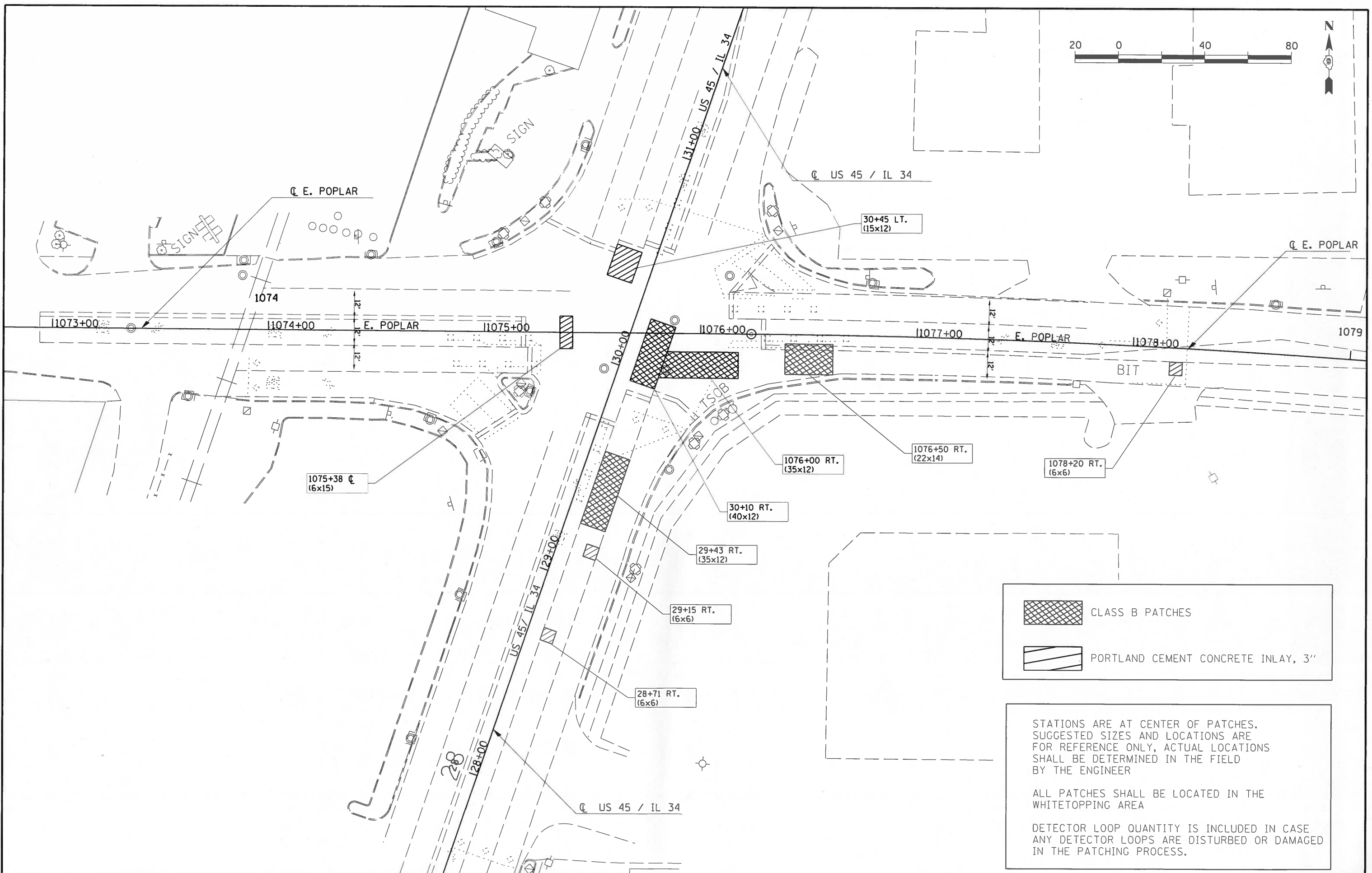
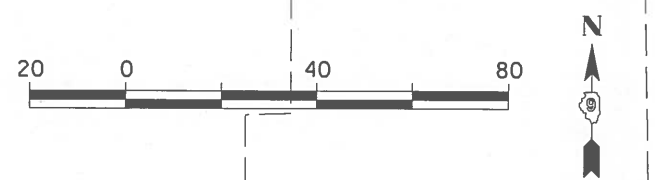
13



FILE NAME =	USER NAME = harpja	DESIGNED -	REVISED -	<b>STATE OF ILLINOIS DEPARTMENT OF TRANSPORTATION</b>	<b>TYPICAL SECTIONS</b>	F.A.P. RTE.	SECTION	COUNTY	TOTAL SHEETS	SHEET NO.
pw\11084EBIDINTEG.illinois.gov\PWIDOT\Documents\DOT Offices\District 9\Projects\78529\Drawings\CR\Sheets\whitetopping.dgn		CHECKED -	REVISED -			132/332/09	CM PAVEMENT REPAIR 2017-1	SALINE	7	5
PLOT SCALE = 10.0000' / 1" =		DATE -	REVISED -		SCALE: _____	SHEET NO. _____ OF _____ SHEETS		STA. _____ TO STA. _____		ILLINOIS FED. AID PROJECT
PLOT DATE = 5/15/2016						<b>CONTRACT NO. 78529</b>				

## PAVEMENT REPAIR AND PATCHING SCHEDULE

STATION (CENTER OF PATCH)	SIZE  (FOOT)	PAVEMENT REMOVAL (SPECIAL)  (SQ YD)	PORTLAND CEMENT CONCRETE INLAY, 3"  (SQ YD)	CLASS B PATCHES TYPE IV 10 INCH  (SQ YD)	SAW CUTS  (FOOT)	DOWEL BARS 1 1/2"  (EACH)	TIE BARS 3/4"  (EACH)	WELDED WIRE REINFORCEMENT  (SQ YD)
US 45 / IL 34								
28+71 RT.	6 X 6	4	4		72			
29+15 RT.	6 X 6	4	4		72			
29+43 RT.	35 X 12			47	141	20	34	47
30+10 RT.	40 X 12			53	156	20	38	53
30+45 LT.	15 X 12	20	20		294			
E. POPLAR								
1075+38 C. L.	6 X 15	10	10		162			
1076+00 RT.	35 X 12			47	141	20	34	47
1076+50 RT.	22 X 14			34	108	24	20	34
1078+20 RT.	6 X 6	4	4		72			
<b>TOTALS</b>		<b>42</b>	<b>42</b>	<b>181</b>	<b>1218</b>	<b>84</b>	<b>126</b>	<b>181</b>



	CLASS B PATCHES
	PORTLAND CEMENT CONCRETE INLAY, 3"

STATIONS ARE AT CENTER OF PATCHES. SUGGESTED SIZES AND LOCATIONS ARE FOR REFERENCE ONLY, ACTUAL LOCATIONS SHALL BE DETERMINED IN THE FIELD BY THE ENGINEER

ALL PATCHES SHALL BE LOCATED IN THE WHITETOPPING AREA

DETECTOR LOOP QUANTITY IS INCLUDED IN CASE ANY DETECTOR LOOPS ARE DISTURBED OR DAMAGED IN THE PATCHING PROCESS.

FILE NAME =	USER NAME = harpja	DESIGNED -	REVISED -	<b>STATE OF ILLINOIS DEPARTMENT OF TRANSPORTATION</b>	<b>CLASS B PATCHING AND WHITETOPPING REPAIR LOCATION SHEET</b>		F.A.P. RTE.	SECTION	COUNTY	TOTAL SHEETS	SHEET NO.
pk:\IL084EBIDINTEG\Illinois.gov\PI\DOT\Documents\DOT Offices\District 9\Projects\78529\Drawings\CAB\sheet\whitertopping.dgn		DRAWN -	REVISED -		132/332	09 CM PAVEMENT REPAIR 2017-1	SALINE	7	7		
PLT SCALE = 40.0000' / 1"		CHECKED -	REVISED -		SCALE: _____ SHEET NO. _____ OF _____ SHEETS STA. _____ TO STA. _____		CONTRACT NO. 78529		ILLINOIS FED. AID PROJECT		
PLT DATE = 5/16/2016		DATE -	REVISED -								