

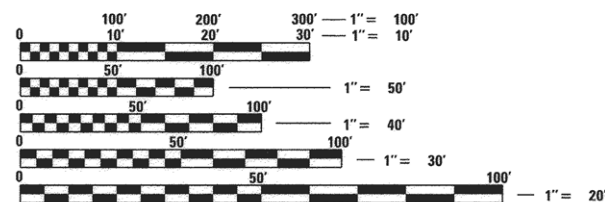
1. COVER SHEET
2. GENERAL NOTES AND LEGEND
3. SUMMARY OF QUANTITIES
4. TYPICAL SECTIONS
5. SCHEDULE OF QUANTITIES
6. ALIGNMENT, BENCHMARKS, AND TIES SHEET
- 7.-11. PLAN AND PROFILE SHEETS
- 12.-13. EROSION AND SEDIMENT CONTROL PLANS
14. PARKING LOT LAYOUT DETAIL
15. MISCELLANEOUS DETAILS
- 16.-18. CROSS SECTIONS

LIST OF STANDARDS

- | | |
|-----------|--|
| 000001-06 | STANDARD SYMBOLS, ABBREVIATIONS AND PATTERNS |
| 280001-07 | TEMPORARY EROSION CONTROL SYSTEMS |
| 701001-02 | OFF-RD OPERATIONS, 2L, 2W MORE THAN 15' AWAY |
| 701006-05 | OFF-RD OPERATIONS, 2L, 2W, 15' TO 24" FROM PAVEMENT EDGE |
| 701201-04 | LANE CLOSURE, 2L, 2W, DAY ONLY, FOR SPEEDS > 45 MPH |
| 701326-04 | LANE CLOSURE, 2L, 2W, PAVEMENT WIDENING, FOR SPEEDS ≥ 45 MPH |
| 701901-05 | TRAFFIC CONTROL DEVICES |
| 720001-01 | SIGN PANEL MOUNTING DETAILS |
| 720006-04 | SIGN PANEL ERECTION DETAILS |
| 728001-01 | TELESCOPING STEEL SIGN SUPPORT |
| 780001-05 | TYPICAL PAVEMENT MARKINGS |

UTILITY NOTE

THE LOCATIONS OF THOSE BURIED AND ABOVEGROUND UTILITIES SHOWN ARE APPROXIMATE, ARE SHOWN FOR CONTRACTOR INFORMATIONAL USE ONLY, AND ARE NOT TO BE REFERENCED FOR CONSTRUCTION PURPOSES. THE IMPLIED PRESENCE OR ABSENCE OF UTILITIES IS NOT TO BE CONSTRUED BY THE OWNER, ENGINEER, CONTRACTOR, OR SUBCONTRACTORS TO BE AN ACCURATE AND COMPLETE REPRESENTATION OF UTILITIES THAT MAY OR MAY NOT EXIST ON THE CONSTRUCTION SITE. BURIED AND ABOVEGROUND UTILITY LOCATION, IDENTIFICATION, AND MARKING ARE THE SOLE RESPONSIBILITY OF THE CONTRACTOR. REROUTING, DISCONNECTION, PROTECTION, ETC. OF ANY UTILITIES MUST BE COORDINATED BETWEEN THE CONTRACTOR, UTILITY COMPANY, AND OWNER. SITE SAFETY, INCLUDING THE AVOIDANCE OF HAZARDS ASSOCIATED WITH BURIED AND ABOVEGROUND UTILITIES, REMAIN THE SOLE RESPONSIBILITY OF THE CONTRACTOR.



FULL SIZE PLANS HAVE BEEN PREPARED USING STANDARD ENGINEERING SCALES. REDUCED SIZED PLANS WILL NOT CONFORM TO STANDARD SCALES. IN MAKING MEASUREMENTS ON REDUCED PLANS, THE ABOVE SCALES MAY BE USED.

J.U.L.I.E.
JOINT UTILITY LOCATION INFORMATION FOR EXCAVATION
1-800-892-0123
OR 811

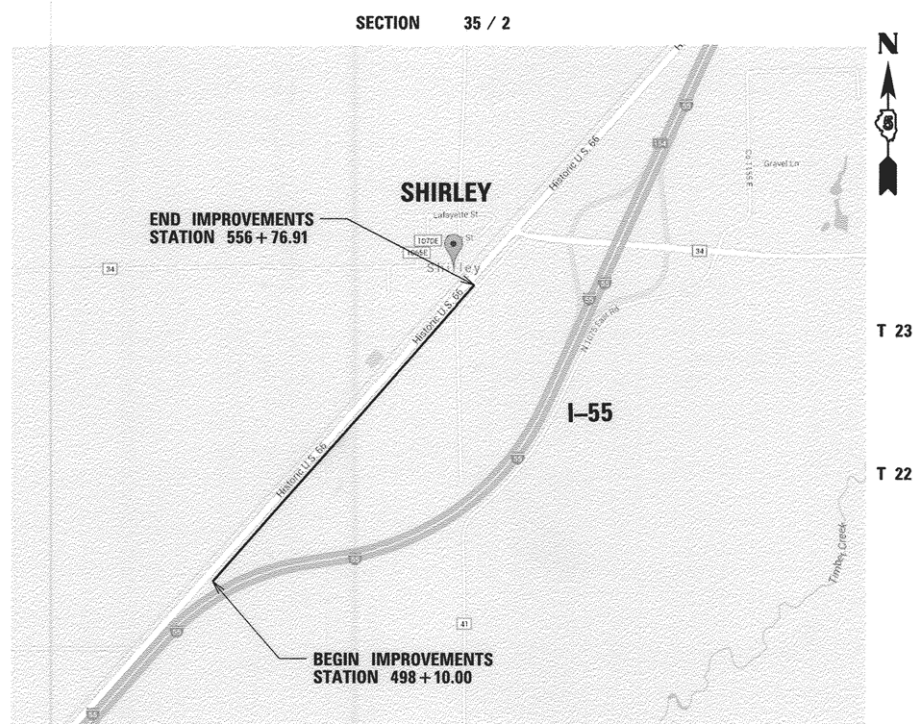
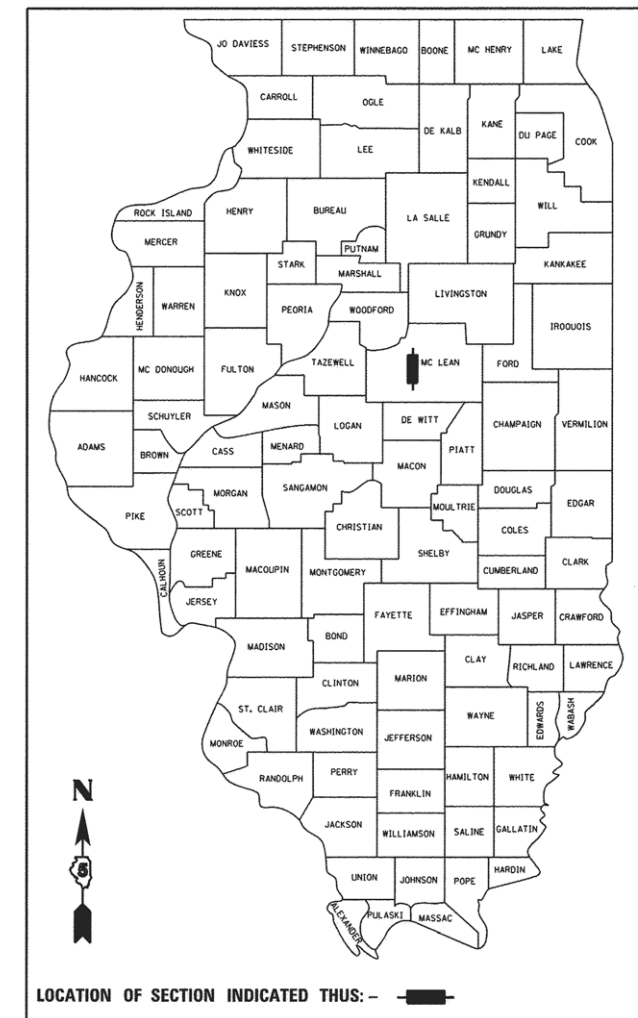


PROJECT ENGINEER – BRYCE BECKSTROM (309)691-0902
PROJECT MANAGER – CINDY LOOS (309)691-0902

CONTRACT NO. 91518

STATE OF ILLINOIS
DEPARTMENT OF TRANSPORTATION
DIVISION OF HIGHWAYS
PROPOSED PLANS
ILLINOIS TRANSPORTATION ENHANCEMENT PROGRAM
PROJECT TE-00D5(112)
SECTION 14-00001-04-BT
TYPE OF IMPROVEMENT – BIKEWAY
McLEAN COUNTY
JOB NUMBER C-95-339-14

F.A. RTE.	SECTION	COUNTY	TOTAL SHEETS	SHEET NO.
C-95-339-14	14-00001-04-BT	McLEAN	18	1
		ILLINOIS	CONTRACT NO.	91518



AREA LOCATION PLAN

NOT TO SCALE

SIGNATURE: *Bryce Beckstrom*
 DATE SIGNED: 2/17/16
 LIC. EXP. DATE: 11/20/17

DATE: 2/8/16

Hanson Professional Services Inc.
 7625 N. University St., Suite 200
 Peoria, Illinois 61614
 Offices Nationwide

**PRINTED BY THE AUTHORITY
OF THE STATE OF ILLINOIS**

STATE OF ILLINOIS
DEPARTMENT OF TRANSPORTATION

APPROVED FEBRUARY 12, 2016
Jump Stiles (ACTIVE)
McLEAN COUNTY, COUNTY ENGINEER

PASSED MARCH 2, 2016
[Signature]
DISTRICT 5 ENGINEER OF LOCAL ROADS AND STREETS

RELEASING FOR BID
BASED ON LIMITED
REVIEW
March 2, 2016
[Signature]
DEPUTY DIRECTOR OF HIGHWAYS, REGION 3 ENGINEER

FUNCTIONAL CLASSIFICATION = BICYCLE PATH
DESIGN DESIGNATION ADT = (<100)
DESIGN SPEED = 20 mph
GROSS LENGTH OF PROJECT = 1.11 mi. (5,866.91 FT)
NET LENGTH OF PROJECT = 1.11 mi. (5,866.91 FT)

GENERAL NOTES:

1. ALL AREAS UNNECESSARILY DISTURBED BY THE CONTRACTOR, AS DETERMINED BY THE ENGINEER, OUTSIDE THE PROPOSED CONSTRUCTION LIMITS WILL BE SEEDED AT THE CONTRACTOR'S EXPENSE. TEMPORARY EROSION CONTROL SEEDING SHALL BE DONE ACCORDING TO THE PLANS AND SPECIFICATIONS.
2. TEMPORARY EROSION CONTROL SEEDING IS INCLUDED IN THIS CONTRACT TO SEED DISTURBED EARTH DURING TIME PERIODS WHEN PERMANENT SEEDING IS NOT ALLOWED. SOME OR ALL OF THE TEMPORARY EROSION CONTROL SEEDING WILL BE DELETED IF PERMANENT SEEDING IS ALLOWED TO BE PLACED AT THE COMPLETION OF THE PLACEMENT OF TOPSOIL.
3. IN ADDITION TO FIELD SURVEYS AND AERIAL SURVEYS, PLAN DIMENSIONS AND DETAILS RELATIVE TO EXISTING FACILITIES HAVE BEEN TAKEN FROM EXISTING PLANS AND ARE SUBJECT TO CONSTRUCTION VARIATIONS. IT SHALL BE THE CONTRACTOR'S RESPONSIBILITY TO VERIFY SUCH DIMENSIONS AND DETAILS IN THE FIELD. SUCH VARIATIONS SHALL NOT BE CONSIDERED DIFFERING SITE CONDITIONS.
4. FOR STABILIZATION, ALL TYPE III BARRICADES SHALL REQUIRE A MINIMUM OF EIGHT SAND BAGS PER BARRICADE.
5. DRAWINGS AND DETAILS ARE ASSUMED NOT TO SCALE UNLESS OTHERWISE NOTED.
6. ACCESS TO ENTRANCES SHALL BE MAINTAINED AT ALL TIMES.
7. EXCAVATION IN GRAVEL OR OIL AND CHIP ROADWAYS IS TO BE PAID AS EARTH EXCAVATION.
8. THE ENGINEER SHALL BE THE SOLE JUDGE CONCERNING CURING TIME FOR BITUMINOUS SURFACE BEFORE TRAFFIC IS ALLOWED ON THE PAVEMENT.
9. SAW CUTS WILL NOT BE PAID FOR SEPARATELY, BUT SHALL BE INCLUDED IN THE COST FOR THE ITEM BEING REMOVED, IF NECESSARY, IN ORDER TO CREATE A CLEAN JOINT FOR CONSTRUCTION OF THE PROPOSED ITEMS.
10. HMA SURFACE COURSE SHALL BE PLACED IN ONE CONTINUOUS LIFT WITH NO CONSTRUCTION JOINTS ALLOWED.

DRAINAGE NOTES:

1. BEFORE ORDERING PIPE CULVERTS OR END SECTIONS, THE CONTRACTOR SHALL VERIFY SIZE, LENGTHS, AND QUANTITIES REQUIRED.

UTILITY NOTES:

1. THE LOCATIONS OF THOSE BURIED AND ABOVEGROUND UTILITIES SHOWN ARE APPROXIMATE, ARE SHOWN FOR CONTRACTOR INFORMATIONAL USE ONLY, AND ARE NOT TO BE REFERENCED FOR CONSTRUCTION PURPOSES. THE IMPLIED PRESENCE OR ABSENCE OF UTILITIES IS NOT TO BE CONSTRUED BY THE OWNER, ENGINEER, CONTRACTOR, OR SUBCONTRACTORS TO BE AN ACCURATE AND COMPLETE REPRESENTATION OF UTILITIES THAT MAY OR MAY NOT EXIST ON THE CONSTRUCTION SITE. BURIED AND ABOVEGROUND UTILITY LOCATION, IDENTIFICATION, AND MARKING ARE THE SOLE RESPONSIBILITY OF THE CONTRACTOR. REROUTING, DISCONNECTION, PROTECTION, ETC. OF ANY UTILITIES MUST BE COORDINATED BETWEEN THE CONTRACTOR, UTILITY COMPANY, AND OWNER. SITE SAFETY, INCLUDING THE AVOIDANCE OF HAZARDS ASSOCIATED WITH BURIED AND ABOVEGROUND UTILITIES, REMAIN THE SOLE RESPONSIBILITY OF THE CONTRACTOR.
2. THE LOCATIONS OF EXISTING UTILITIES SHOWN ON THE PLANS ARE BASED ON FIELD INVESTIGATION AND THE BEST INFORMATION AVAILABLE. THE CONTRACTOR SHALL OBTAIN EXACT UTILITY LOCATIONS FROM THE UTILITY COMPANIES AND BY FIELD INSPECTION. THE FOLLOWING STANDARD UTILITY DEPTHS WERE USED IF INFORMATION WAS UNAVAILABLE:
TELEPHONE/FIBER OPTIC - 2.5 FT
GAS - 3 FT
CABLE TV - 2.5 FT
ELECTRIC - 3 FT
SANITARY SEWER - 2.5 FT
WATER - 4 FT
3. ALL ELECTRIC LINES WILL REMAIN ENERGIZED DURING CONSTRUCTION UNLESS OTHERWISE COORDINATED WITH THE UTILITY COMPANY.

QUANTITY NOTES:

1. FACTORS USED FOR ESTIMATING PLAN QUANTITIES ARE AS FOLLOWS AND SHALL NOT BE USED FOR THE BASIS OF FINAL QUANTITIES:
HOT-MIX ASPHALT - 112 LBS/SQ YD-IN
SUBBASE GRANULAR MATERIAL - 2.05 TONS/CU YD
EARTHWORK SHRINKAGE - 25%
STONE RIPRAP 1.5 TON/CU YD

COMMITMENTS

COMMITMENTS AS OF JANUARY 16, 2015

1. SINCE THE GENERAL PROJECT AREA HAS BEEN RECORDED AS SUPPORTING POPULATIONS OF THE STATE LISTED KIRTLANDS'S SNAKE, WORKERS ON THE PROJECT SHOULD BE INSTRUCTED THAT ANY SNAKES ENCOUNTERED ARE NOT TO BE KILLED.

UTILITY CONTACTS

CORN BELT ENERGY CORPORATION
(ENGINEERING DEPT.)
JASON COTNER
1 ENERGY WAY
BLOOMINGTON, IL 61705
PHONE: 309-664-9246

LEVEL 3 COMMUNICATIONS
BRYAN HANKINS
1025 ELDORADO BLVD.
BROOMFIELD, CO 80021
PHONE: 720-480-3364

AMEREN IP (NORTH)
MARTIN FULLER
501 EAST LAFAYETTE STREET
BLOOMINGTON, IL 61701
PHONE: 618-236-6281

FRONTIER COMMUNICATIONS
ADAM GANGLOFF
109 E. MARKET ST.
BLOOMINGTON, IL 61701
PHONE: 309-557-1378

NICOR GAS
BRUCE KOPPANG
1844 FERRY ROAD
NAPERVILLE, IL 60563
PHONE: 630-388-3046

SPRINT
JAMES BURTON
5600 N. RIVER RD.
ROSEMONT, IL 60018
PHONE: 708-955-6659

LEGEND

	CONTROL POINT		PIPE CULVERT
	EXISTING TELEPHONE PEDESTAL		FENCE
	EXISTING SIGN		CROP LINE
	DECIDUOUS TREE		EXISTING R.O.W.
			PROPERTY LINE
			SECTION LINE
			DITCH LINE
			FIBER OPTIC
			UNDERGROUND TELEPHONE
			EXISTING R.O.W. AND ACCESS CONTROL
			TREE LINE

© Copyright Hanson Professional Services Inc. 2016
HANSON
 Hanson Professional Services Inc.

BAB	2/5/16
RLA	2/5/16
CAL	2/5/16
REVIEWED	

I:\15\Jobs\15L0009\CAD\Road\Sheet\c-002gen.dgn
 Default

FILE NAME =	I:\15\Jobs\15L0009\CAD\Road\Sheet\c-002gen.dgn	USER NAME = becks@1673	DESIGNED - BAB	REVISED -
			DRAWN - RLA	REVISED -
			CHECKED - CAL	REVISED -
			DATE - 2/8/16	REVISED -

**STATE OF ILLINOIS
DEPARTMENT OF TRANSPORTATION**

**US ROUTE 66 BIKE TRAIL
GENERAL NOTES AND LEGEND**

SCALE: N/A SHEET OF SHEETS STA. TO STA.

F.A. RTE.	SECTION	COUNTY	TOTAL SHEETS	SHEET NO.
	14-00001-04-BT	McLEAN	18	2
CONTRACT NO. 91518				
ILLINOIS FED. AID PROJECT TE-00D5(112)				

CODE NO.	ITEM DESCRIPTION	UNIT	BICYCLE
			ROUTE 66 BIKEWAY ITEP LOCAL 14-00001-04-BT
20200100	EARTH EXCAVATION	CU YD	999
21101615	TOPSOIL FURNISH AND PLACE, 4"	SQ YD	7562
25000310	SEEDING, CLASS 4	ACRE	1.75
25000400	NITROGEN FERTILIZER NUTRIENT	POUND	158
25000500	PHOSPHORUS FERTILIZER NUTRIENT	POUND	158
25000600	POTASSIUM FERTILIZER NUTRIENT	POUND	158
25100115	MULCH, METHOD 2	ACRE	1.75
28000250	TEMPORARY EROSION CONTROL SEEDING	POUND	175
28000305	TEMPORARY DITCH CHECKS	FOOT	15
28000400	PERIMETER EROSION BARRIER	FOOT	69
28000500	INLET AND PIPE PROTECTION	EACH	1
28100207	STONE RIPRAP, CLASS A4	TON	66
28200200	FILTER FABRIC	SQ YD	44
31100100	SUBBASE GRANULAR MATERIAL, TYPE A	TON	250
31101600	SUBBASE GRANULAR MATERIAL, TYPE B 8"	SQ YD	7669
40600290	BITUMINOUS MATERIALS (TACK COAT)	POUND	18890
40600625	LEVELING BINDER (MACHINE METHOD), N50	TON	609
40603310	HOT-MIX ASPHALT SURFACE COURSE, MIX "C", N50	TON	609
44200099	PAVEMENT PATCHING, TYPE III, 8 INCH	SQ YD	21
54215559	METAL END SECTIONS 24"	EACH	2
542C0229	PIPE CULVERTS, CLASS C, TYPE 1 24"	FOOT	58
67100100	MOBILIZATION	LSUM	1
* 72000100	SIGN PANEL - TYPE 1	SQ FT	31.5
* 72800100	TELESCOPING STEEL SIGN SUPPORT	FOOT	142.5
* 78000100	THERMOPLASTIC PAVEMENT MARKING - LETTERS AND SYMBOLS	SQ FT	5
* 78000200	THERMOPLASTIC PAVEMENT MARKING - LINE 4"	FOOT	317
* 78000400	THERMOPLASTIC PAVEMENT MARKING - LINE 6"	FOOT	108
* 78000600	THERMOPLASTIC PAVEMENT MARKING - LINE 12"	FOOT	170
X7010216	TRAFFIC CONTROL AND PROTECTION, (SPECIAL)	LSUM	1
* X7200105	SIGN PANEL - TYPE 1 (SPECIAL)	SQ FT	2
Z0004002	BOLLARDS	EACH	4
* Z0013798	CONSTRUCTION LAYOUT	LSUM	1

* SPECIALTY ITEMS

LAYOUT	BAB	2/5/16
DRAWN	RLA	2/5/16
REVIEWED	CAL	2/7/16

FILE NAME = I:\15\Jobs\15L0009\CAD\Road\Sheet\c-601sum.dgn

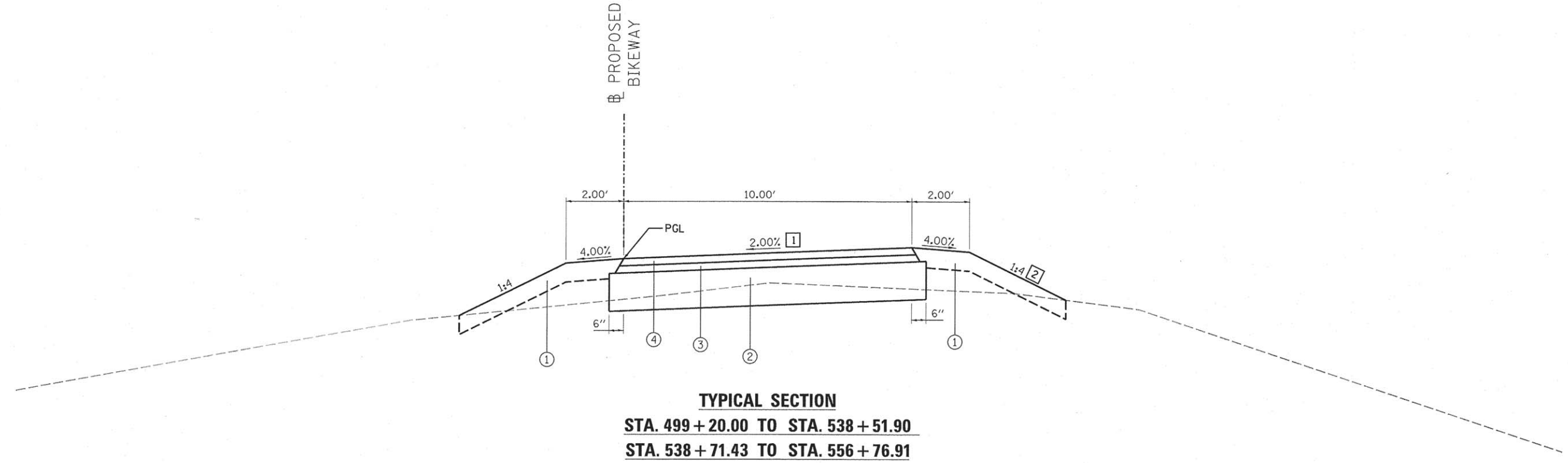
USER NAME = becks01673	DESIGNED - BAB	REVISED -
PLOT SCALE = 10.0000' / 1"	DRAWN - RLA	REVISED -
PLOT DATE = 2/19/2016	CHECKED - CAL	REVISED -
	DATE - 2/8/16	REVISED -

**STATE OF ILLINOIS
DEPARTMENT OF TRANSPORTATION**

**US ROUTE 66 BIKE TRAIL
SUMMARY OF QUANTITIES**

SCALE: N/A SHEET OF SHEETS STA. TO STA.

F.A. RTE.	SECTION	COUNTY	TOTAL SHEETS	SHEET NO.
	14-00001-04-BT	MCLEAN	18	3
			CONTRACT NO.91518	
ILLINOIS FED. AID PROJECT TE-00D5(112)				



TYPICAL SECTION
STA. 499 + 20.00 TO STA. 538 + 51.90
STA. 538 + 71.43 TO STA. 556 + 76.91

TYPICAL SECTION LEGEND

- ① TOPSOIL FURNISH AND PLACE, 4"
SEEDING CLASS 4 & MULCH METHOD 2
- ② SUBBASE GRANULAR MATERIAL, TYPE B 8"
- ③ LEVELING BINDER (MACHINE METHOD), N50 1.5"
- ④ HOT-MIX ASPHALT SURFACE COURSE, MIX "C", N50 1.5"

- ① BIKE PATH CROSS SLOPE - RIGHT
 STA. 499+20.00 TO STA. 499+65.00 = TRANSITIONS FROM -1.50 % TO 2.00%
 STA. 499+65.00 TO STA. 538+25.00 = 2.00%
 STA. 538+25.00 TO STA. 538+51.90 = TRANSITIONS FROM 2.00% TO MATCH EXISTING
 STA. 538+71.43 TO STA. 539+00.00 = TRANSITIONS FROM MATCH EXISTING TO 2.00%
 STA. 539+00.00 TO STA. 556+50.00 = 2.00%
 STA. 556+50.00 TO STA. 556+76.91 = TRANSITIONS FROM 2.00% TO MATCH EXISTING
- ② SLOPE - RIGHT
 STA. 499+20.00 TO STA. 540+00.00 = 1:4
 STA. 540+00.00 TO STA. 541+00.00 = TRANSITIONS FROM 1:4 TO 1:3
 STA. 541+00.00 TO STA. 544+00.00 = 1:3
 STA. 544+00.00 TO STA. 545+00.00 = TRANSITIONS FROM 1:3 TO 1:4
 STA. 545+00.00 TO STA. 556+76.91 = 1:4

BITUMINOUS MIXTURE REQUIREMENTS		
MIXTURE REQUIREMENTS APPLICABLE FOR THIS PROJECT:		
LOCATIONS	U.S. ROUTE 66 BIKEWAY	
MIXTURE USE(S):	SURFACE COURSE	LEVELING BINDER
PG:	PG 64-22	PG 64-22
DESIGN AIR VOIDS:	4.0% @ N-50	4.0% @ N-50
MIXTURE COMPOSITION: (GRADATION MIXTURE)	IL 9.5	IL 9.5
FRICTION AGGREGATE:	MIXTURE C	MIXTURE C
MIXTURE WEIGHT:	112 LB/SO YD/IN	112 LB/SO YD/IN
QUALITY MANAGEMENT PROGRAM:	QC/OA	QC/OA
SUBLOT SIZE:	N/A	N/A

LAYOUT	BAB	2/5/16
DRAWN	RLA	2/5/16
REVIEWED	CAL	2/5/16

FILE NAME =	USER NAME = becks01673	DESIGNED - BAB	REVISED -
I:\15\Jobs\15L0009\CAD\Road\Sheet\c-501.txd		DRAWN - RLA	REVISED -
Default		CHECKED - CAL	REVISED -
		DATE - 2/8/16	REVISED -

STATE OF ILLINOIS
DEPARTMENT OF TRANSPORTATION

US ROUTE 66 BIKE TRAIL
TYPICAL SECTIONS

F.A. RTE.	SECTION	COUNTY	TOTAL SHEETS	SHEET NO.
	14-00001-04-BT	McLEAN	18	4
CONTRACT NO. 91518				
ILLINOIS FED. AID PROJECT TE-00D5(112)				

SCALE: N/A SHEET OF SHEETS STA. TO STA.

EARTHWORK SCHEDULE					
LOCATION		202C0100	EXCAVATION TO BE USED IN EMBANKMENT ADJUSTED FOR 25% SHRINKAGE	EMBANKMENT	EARTHWORK BALANCE EXCESS (+) OR SHORTAGE (-)
BEGIN STATION	END STATION	CU YD	CU YD	CU YD	CU YD
498+10.00	507+00.00	205	154	301	-147
507+00.00	522+00.00	168	126	148	-22
522+00.00	537+00.00	134	101	162	-61
537+00.00	551+00.00	330	248	74	174
551+00.00	556+76.91	162	122	12	110
TOTAL		999	751	697	54

TOPSOIL, SEEDING, FERTILIZER AND EROSION CONTROL SCHEDULE									
LOCATION		21101615	25000310	25000400	25000500	25000600	25100115	28000250	28000400
BEGIN STATION	END STATION	TOPSOIL FURNISH AND PLACE, 4"	SEEDING, CLASS 4	NITROGEN FERTILIZER NUTRIENT	PHOSPHORUS FERTILIZER NUTRIENT	POTASSIUM FERTILIZER NUTRIENT	MULCH, METHOD 2	TEMPORARY EROSION CONTROL SEEDING	PERIMETER EROSION BARRIER
		SQ YD	ACRE	POUND	POUND	POUND	ACRE	POUND	FOOT
497+50.00	512+50.00	2,091	0.52	47	47	47	0.52	52	69
512+50.00	527+50.00	2,036	0.52	47	47	47	0.52	52	
527+50.00	542+50.00	1,929	0.40	36	36	36	0.40	40	
542+50.00	556+76.91	1,506	0.31	28	28	28	0.31	31	
TOTAL		7,562	1.75	158	158	158	1.75	175	69

PAVEMENT SCHEDULE							
LOCATION		31100100	31101600	40600290	40600625	40603310	44200099
BEGIN STATION	END STATION	SUBBASE GRANULAR MATERIAL, TYPE A	SUBBASE GRANULAR MATERIAL, TYPE B 8"	BITUMINOUS MATERIALS (TACK COAT)	LEVELING BINDER (MACHINE METHOD), N50	HOT-MIX ASPHALT SURFACE COURSE, MIX "C", N50	PAVEMENT PATCHING, TYPE III, 8 INCH
		TON	SQ YD	POUND	TON	TON	SQ YD
497+50.00	507+00.00		1,610	3,960	144	144	
507+00.00	522+00.00		1,833	4,500	140	140	
522+00.00	537+00.00		1,833	4,500	140	140	
537+00.00	552+00.00		1,810	4,500	140	140	21
552+00.00	556+76.91		583	1,430	45	45	
CONTINGENCY		250					
TOTAL		250	7,669	18,890	609	609	21

PIPE CULVERT SCHEDULE					
LOCATION			28000500	54215559	542C0229
BEGIN STATION	END STATION	LT/RT	INLET AND PIPE PROTECTION	METAL END SECTIONS 24"	PIPE CULVERTS, CLASS C, TYPE 1 24"
			EACH	EACH	FOOT
497+98.00	498+60.00	LT	1	2	58
TOTAL			1	2	58

DITCH CHECK SCHEDULE			
LOCATION			28000305
STATION	OFFSET	RT	TEMPORARY DITCH CHECKS
			FOOT
498+15.00	44.0'	RT	15
TOTAL			15

PAVEMENT MARKING SCHEDULE					
LOCATION		78000100	78000200	78000400	78000600
BEGIN STATION	END STATION	THERMOPLASTIC PAVEMENT MARKING - LETTERS AND SYMBOLS	THERMOPLASTIC PAVEMENT MARKING - LINE 4"	THERMOPLASTIC PAVEMENT MARKING - LINE 6"	THERMOPLASTIC PAVEMENT MARKING - LINE 12"
		SQ FT	FOOT	FOOT	FOOT
PARKING LOT					
498+10.00	499+20.00	5.0	317		
DRIVEWAY					
538+51.90	538+71.43			38	60
QUINN STREET					
556+76.91	557+11.91			70	110
TOTAL		5.0	317	108	170

RIPRAP SCHEDULE			
LOCATION		28100207	28200200
STATION	OFFSET	STONE RIPRAP, CLASS A4	FILTER FABRIC
		TON	SQ YD
497+81.00	31.9'	66	44
TOTAL		66	44

SIGNAGE AND BOLLARD SCHEDULE													
LOCATION			SIGN TYPE	SIGN WIDTH (IN)	SIGN HEIGHT (IN)	SIGN AREA (SQ FT)	MUTCD CODE	HEIGHT CLEARANCE SIGN PANEL TO GROUND (FT)	72000100	X7200105	72800100	Z0004002	NOTE
SIGN ID	STATION	OFFSET							SIGN PANEL - TYPE 1	SIGN PANEL - TYPE 1 (SPECIAL)	TELESCOPING STEEL SIGN SUPPORT	BOLLARDS	
									SQ FT	SQ FT	FOOT	EACH	
HC1	499+02.00	30.0'	RT	HANDICAPPED PARKING	18	12	1.50	R7-8	1.50		14.5		
				\$250 FINE	12	6	0.50	R7-101	0.50				
BOLLARD	499+30.00	5.0'	RT									1	
NMV1	499+30.00	15.0'	RT	NO MOTOR VEHICLES	24	24	4.00	R5-3	4.00		14		
SPEC 1	500+00.00	15.0'	RT	ROUTE 66 TRAIL	7	10	0.49	N/A		0.50	12.5		
SPEC 2	500+00.00	15.0'	RT	ROUTE 66 TRAIL	7	10	0.49	N/A		0.50			
BOLLARD	538+42.01	5.0'	RT									1	
BOLLARD	538+80.92	5.0'	RT									1	
SPEC 3	555+90.00	5.0'	LT	ROUTE 66 TRAIL	7	10	0.49	N/A		0.50	12.5		
SPEC 4	555+90.00	5.0'	LT	ROUTE 66 TRAIL	7	10	0.49	N/A		0.50			
BW1	556+36.09	24.0'	LT	BICYCLE WARNING	24	24	4.00	W11-1	4.00		19.5		FLUORESCENT YELLOW-GREEN
				RIGHT ARROW	24	18	3.00	W16-5P (R)	3.00				
BR1	556+64.10	11.0'	LT	BIKE ROUTE	24	18	3.00	D11-1	3.00		18		
				DOUBLE ARROW	12	9	0.75	M6-4	0.75				
BOLLARD	556+66.00	5.0'	RT									1	
NMV2	556+66.00	5.0'	LT	NO MOTOR VEHICLES	24	24	4.00	R5-3	4.00		14		
BW2	TBD BY ENGINEER BASED UPON FIELD CONDITIONS			BICYCLE WARNING	24	24	4.00	W11-1	4.00		19.5		FLUORESCENT YELLOW-GREEN
				LEFT ARROW	24	18	3.00	W16-5P (L)	3.00				
BR2	557+24.26	20.7'	RT	BIKE ROUTE	24	18	3.00	D11-1	3.00		18		
				DOUBLE ARROW	12	9	0.75	M6-4	0.75				
TOTAL									31.50	2.00	142.5	4	

© Copyright Hanson Professional Services Inc. 2016
HANSON
 Hanson Professional Services Inc.

LAYOUT 2/5/16
 DRAWN RLA 2/5/16
 REVIEWED CAL 2/5/16
 FILE: I:\Jobs\15L0009\CAD\Road\Sheet\c-601sch.dgn

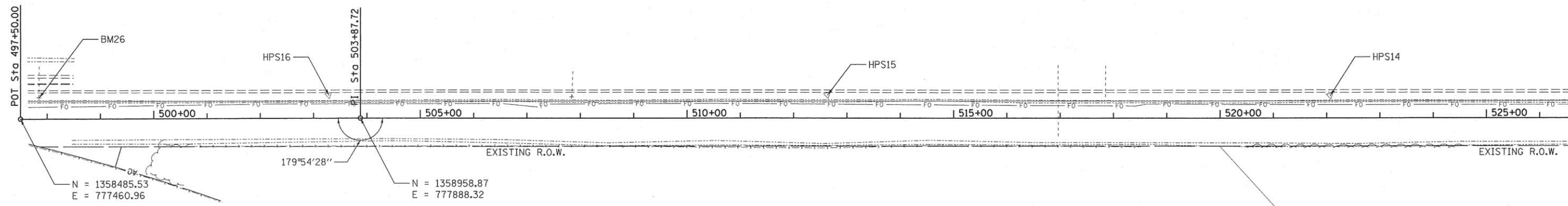
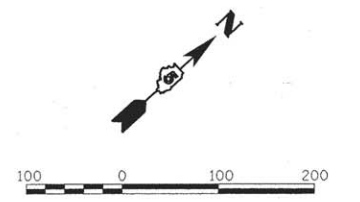
FILE NAME =	USER NAME = becks01673	DESIGNED - BAB	REVISED -
H:\15Jobs\15L0009\CAD\Road\Sheet\c-601sch.dgn		DRAWN - RLA	REVISED -
PLOT SCALE = 1/8"=1'-0"		CHECKED - CAL	REVISED -
PLOT DATE = 2/19/2016		DATE - 2/8/16	REVISED -

STATE OF ILLINOIS
DEPARTMENT OF TRANSPORTATION

US ROUTE 66 BIKE TRAIL
SCHEDULE OF QUANTITIES

SCALE: N/A SHEET OF SHEETS STA. TO STA.

F.A. RTE.	SECTION	COUNTY	TOTAL SHEETS	SHEET NO.
	14-00001-04-BT	McLEAN	18	5
CONTRACT NO. 91518				
ILLINOIS FED. AID PROJECT TE-00D5(112)				

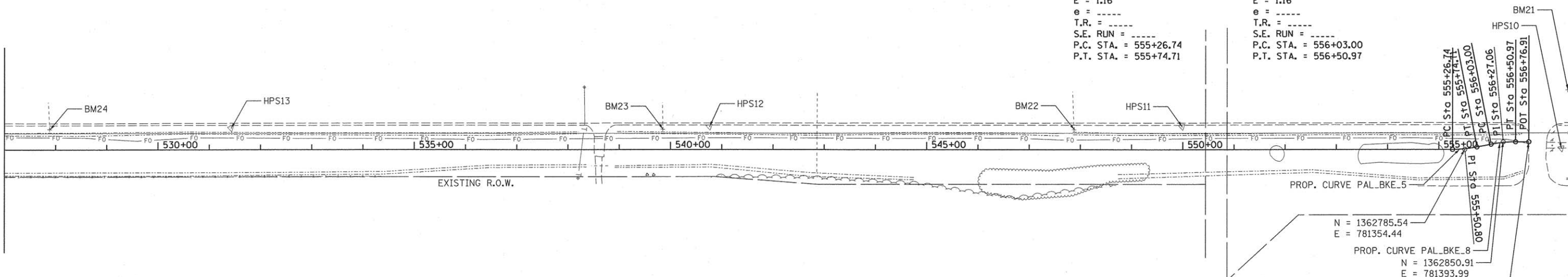


MATCHLINE STA. 527 + 00.00

HPS14 N = 1360335.34 E = 779078.47 STATION = 522+06.89 OFFSET = 41.98' LT. 5/8" PIN	HPS15 N = 1359637.25 E = 778444.39 STATION = 512+63.81 OFFSET = 43.28' LT. 5/8" PIN	HPS16 N = 1358943.84 E = 777816.80 STATION = 503+28.63 OFFSET = 43.01' LT. 5/8" PIN	BM26 N = 1358538.10 E = 777454.91 ELEVATION = 723.04 STATION = 497+84.96 OFFSET = 39.72' LT. CHISELED SQUARE ON CONCRETE HEADWALL
--	--	--	--

PROP. CURVE PAL_BKE_5 PI STA. = 555+50.80 $\Delta = 10^\circ 59' 40''$ (LT) $D = 22^\circ 55' 06''$ $R = 250.00'$ $T = 24.06'$ $L = 47.97'$ $E = 1.16'$ $e = \text{-----}$ $T.R. = \text{-----}$ S.E. RUN = ----- P.C. STA. = 555+26.74 P.T. STA. = 555+74.71	PROP. CURVE PAL_BKE_8 PI STA. = 556+27.06 $\Delta = 10^\circ 59' 40''$ (RT) $D = 22^\circ 55' 06''$ $R = 250.00'$ $T = 24.06'$ $L = 47.97'$ $E = 1.16'$ $e = \text{-----}$ $T.R. = \text{-----}$ S.E. RUN = ----- P.C. STA. = 556+03.00 P.T. STA. = 556+50.97
--	--

MATCHLINE STA. 527 + 00.00



HPS10 N = 1362926.38 E = 781479.65 5/8" PIN	HPS11 N = 1362406.63 E = 780950.80 STATION = 549+99.00 OFFSET = 44.79' LT. 5/8" PIN	HPS12 N = 1361722.69 E = 780331.27 STATION = 540+76.17 OFFSET = 44.81' LT. 5/8" PIN	HPS13 N = 1361029.02 E = 779706.69 STATION = 531+42.75 OFFSET = 42.05' LT. 5/8" PIN	BM21 N = 1363012.67 E = 781403.32 ELEVATION = 770.02 CHISELED "X" ON NORTH CONCRETE RAIL OF BRIDGE ON WESTBOUND CH34	BM22 N = 1362246.63 E = 780813.64 ELEVATION = 756.49 STATION = 547+88.32 OFFSET = 39.04' LT CHISELED SQUARE ON CONCRETE HEADWALL	BM23 N = 1361652.17 E = 780274.04 ELEVATION = 748.42 STATION = 539+85.49 OFFSET = 539+85.49' LT CHISELED SQUARE ON CONCRETE HEADWALL	BM24 N = 1360765.40 E = 779470.82 ELEVATION = 737.19 STATION = 527+89.02 OFFSET = 39.88' LT CHISELED SQUARE ON CONCRETE HEADWALL
--	--	--	--	---	---	---	---

N = 1362785.54 E = 781354.44	PROP. CURVE PAL_BKE_8 N = 1362850.91 E = 781393.99	N = 1362887.97 E = 781427.56
---------------------------------	---	---------------------------------

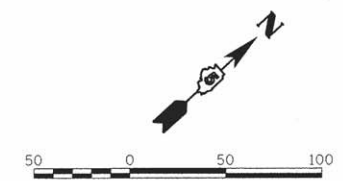
LAYOUT	BAB	2/5/16
DRAWN	RLA	2/5/16
REVIEWED	CAL	2/5/16

FILE NAME = I:\15Jobs\15L0009\CAD\Road\Sheet\c-101.tss.dgn	USER NAME = becks01673	DESIGNED - BAB	REVISED -
PLOT SCALE = 200.0000' / in.	CHECKED - CAL	REVISOR -	REVISED -
PLOT DATE = 2/12/2016	DATE - 2/8/16	REVISOR -	REVISED -

**STATE OF ILLINOIS
DEPARTMENT OF TRANSPORTATION**

US ROUTE 66 BIKE TRAIL ALIGNMENT, BENCHMARKS, AND TIES SHEET			
SCALE: 1"=100'	SHEET	OF	SHEETS
STA.	TO	STA.	

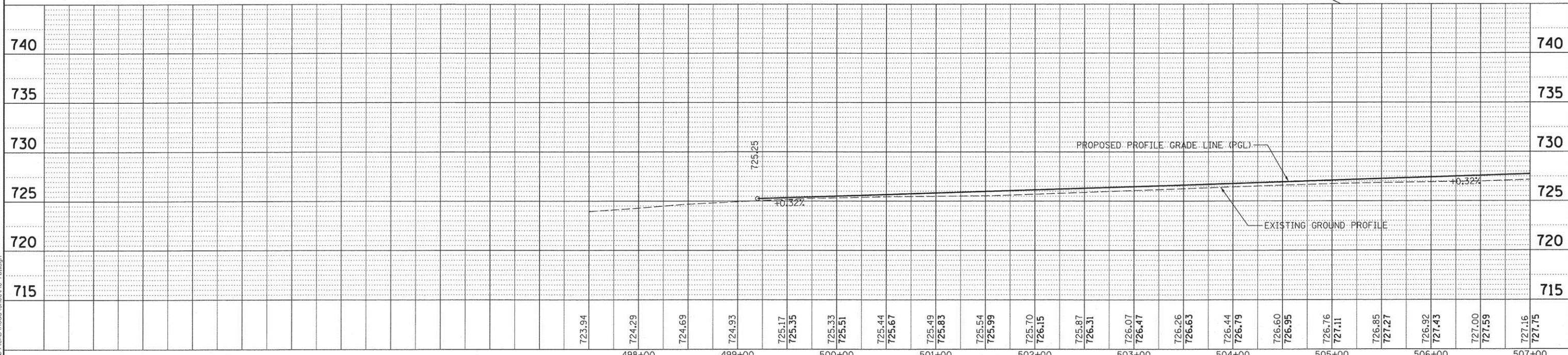
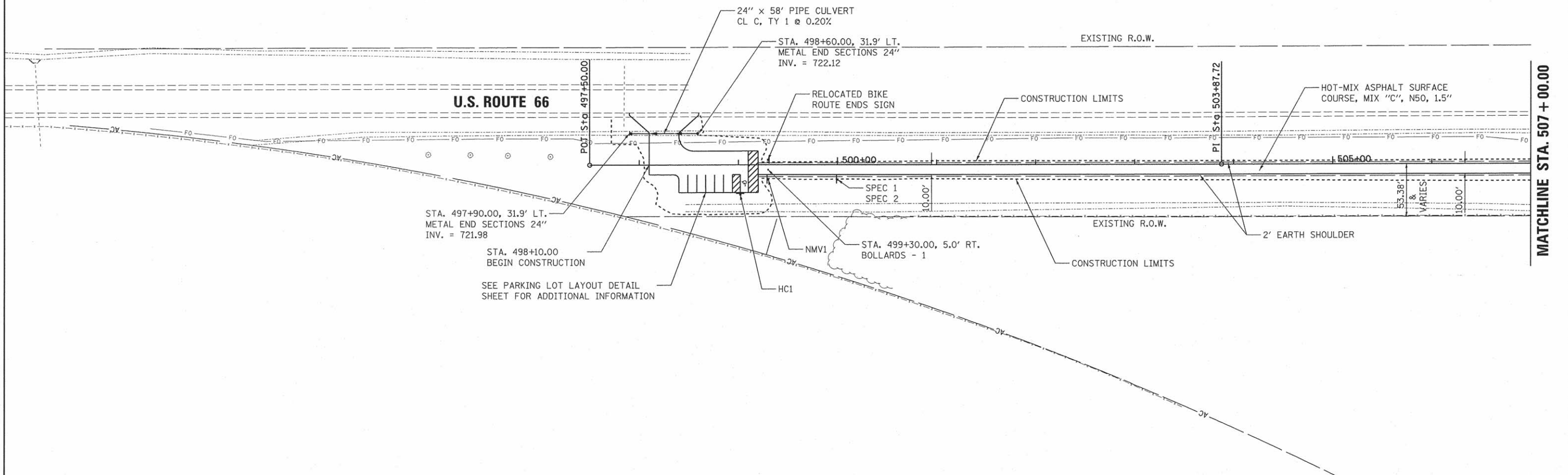
F.A. RTE.	SECTION	COUNTY	TOTAL SHEETS	SHEET NO.
	14-00001-04-BT	McLEAN	18	6
CONTRACT NO.91518				
ILLINOIS FED. AID PROJECT TE-005(112)				



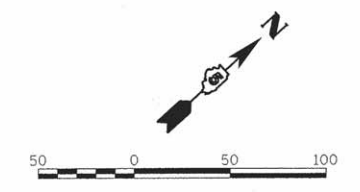
PLAN	SURVEYED	DATE
	ALIGNED	
	CHECKED	
	BY	
	NO.	
	DATE	

PROFILE	SURVEYED	DATE
	GRADES	
	NOTED	
	BY	
	NO.	
	DATE	

LAYOUT	BAB	2/5/16
DRAWN	RLA	2/5/16
REVIEWED	CAL	2/5/16

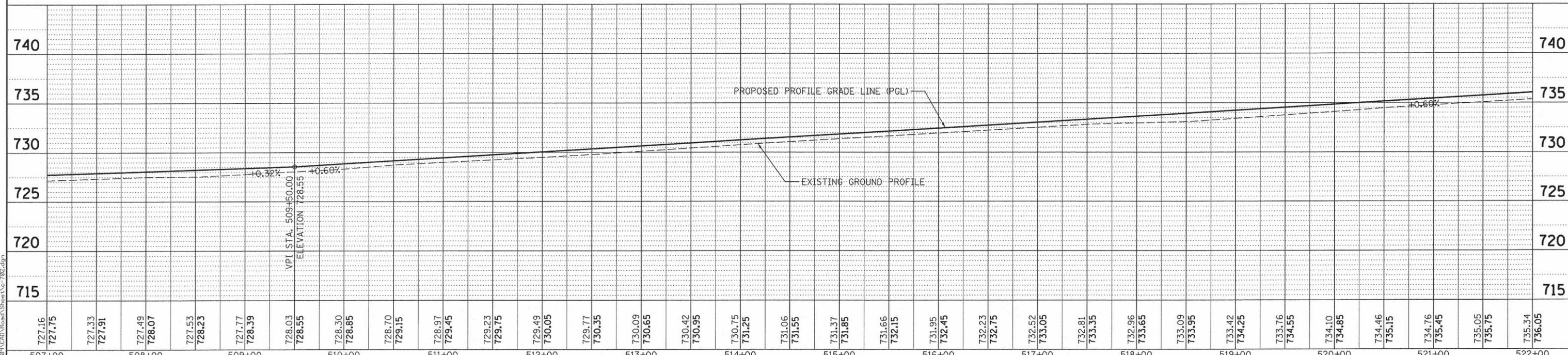
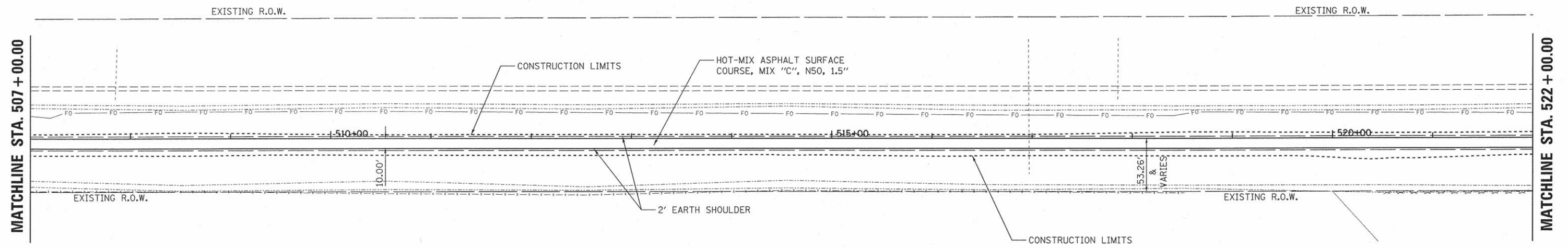


FILE NAME =	USER NAME = becks01673	DESIGNED - BAB	REVISED -	STATE OF ILLINOIS DEPARTMENT OF TRANSPORTATION	US ROUTE 66 BIKE TRAIL PLAN AND PROFILE	F.A. RTE.	SECTION	COUNTY	TOTAL SHEETS	SHEET NO.
I:\15\Jobs\15L0009\CAD\Road\Sheet\c-701.dgn		DRAWN - RLA	REVISED -			14-00001-04-BT	McLEAN	18	7	
		CHECKED - CAL	REVISED -			CONTRACT NO. 91518				
Default		DATE - 2/8/16	REVISED -			[ILLINOIS] FED. ROAD DISTRICT TE-0005(112)				



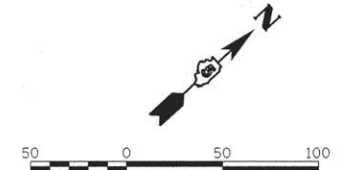
PLAN	SURVEYED	DATE
	PLOTTED	
	CHECKED	
	BY	
	NO. OF WAY CHECKED	
	CADD FILE NAME	
	NO.	

PROFILE	SURVEYED	DATE
	PLOTTED	
	CHECKED	
	BY	
	NO. OF WAY CHECKED	
	STRUCTURE NOTATIONS CHK'D	
	NO.	



LAYOUT	BAB	2/5/16
DRAWN	RLA	2/5/16
REVIEWED	CAL	2/5/16

FILE NAME = I:\15\Jobs\15L0009\CAD\Road\Sheet\c-702.dgn	USER NAME = becks01673	DESIGNED - BAB	REVISED -	STATE OF ILLINOIS DEPARTMENT OF TRANSPORTATION	US ROUTE 66 BIKE TRAIL PLAN AND PROFILE				F.A. RTE.	SECTION	COUNTY	TOTAL SHEETS	SHEET NO.
PLOT SCALE = 100.0000' / 1"		DRAWN - RLA	REVISED -		14-00001-04-BT	McLEAN	18	8					
PLOT DATE = 2/12/2016		CHECKED - CAL	REVISED -		CONTRACT NO.91518								
		DATE - 2/8/16	REVISED -		ILLINOIS FED. PROJECT TE-00D5(12)								
SCALE: 1"=50'		SHEET OF SHEETS		STA. 507+00 TO STA. 522+00									

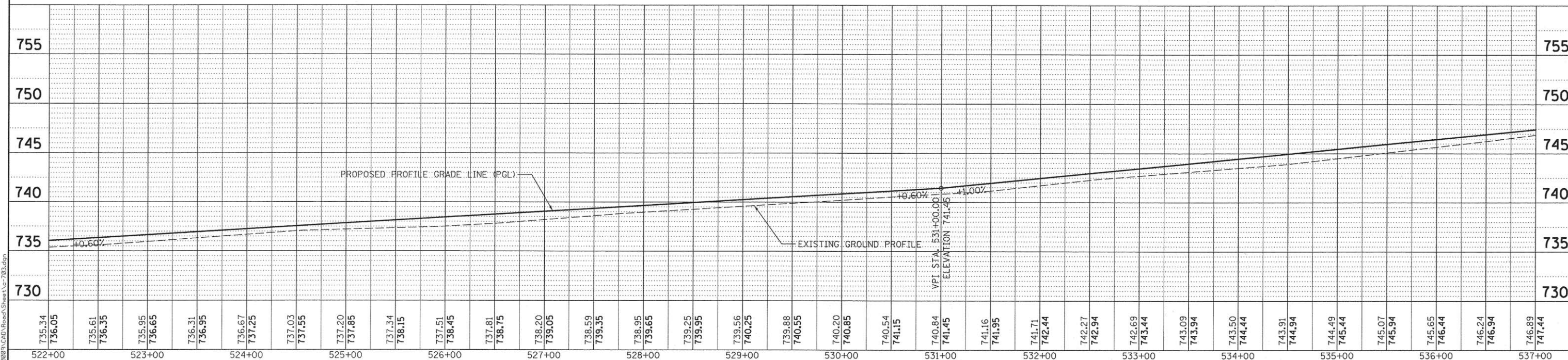
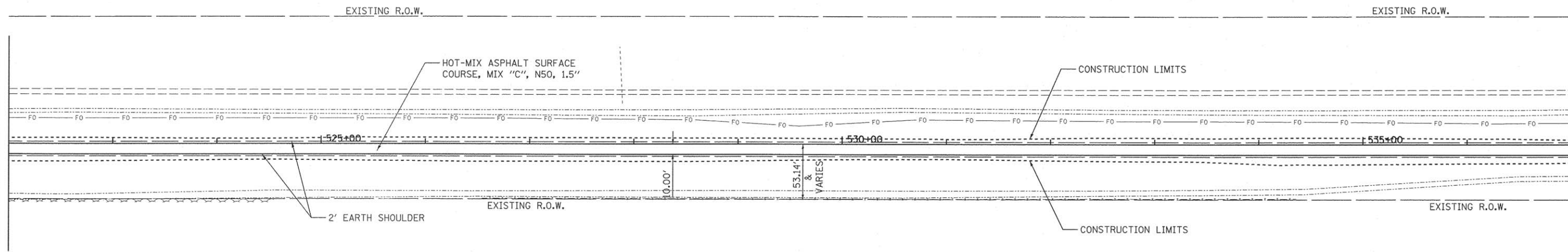


PLAN	DESIGNED	DATE
NOTE BOOK NO.	PLOTTED	BY
CADD FILE NAME	ALIGNMENT CHECKED	
	STRUCTURE NOTATION CHECKED	

PROFILE	SURVEYED	DATE
NOTE BOOK NO.	PLOTTED	BT
CADD FILE NAME	GRADES CHECKED	
	STRUCTURE NOTATION CHECKED	

MATCHLINE STA. 522 + 00.00

MATCHLINE STA. 537 + 00.00



LAYOUT	BAB	2/5/16
DRAWN	RLA	2/5/16
REVIEWED	CAL	2/5/16

FILE NAME = I:\15\Jobs\15L0009\CAD\Road\Sheet\c-703.dgn

USER NAME = becks01673
 PLOT SCALE = 100.0000' / 1" / in.
 PLOT DATE = 2/12/2016

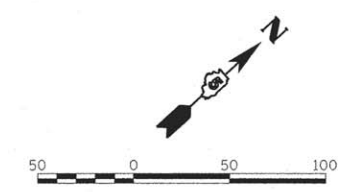
DESIGNED - BAB	REVISED -
DRAWN - RLA	REVISED -
CHECKED - CAL	REVISED -
DATE - 2/8/16	REVISED -

**STATE OF ILLINOIS
DEPARTMENT OF TRANSPORTATION**

**US ROUTE 66 BIKE TRAIL
PLAN AND PROFILE**

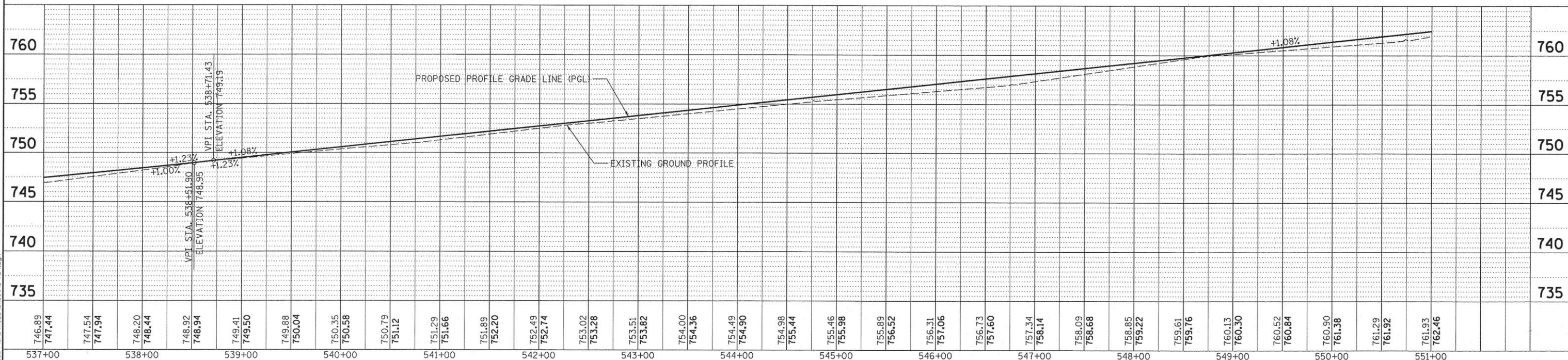
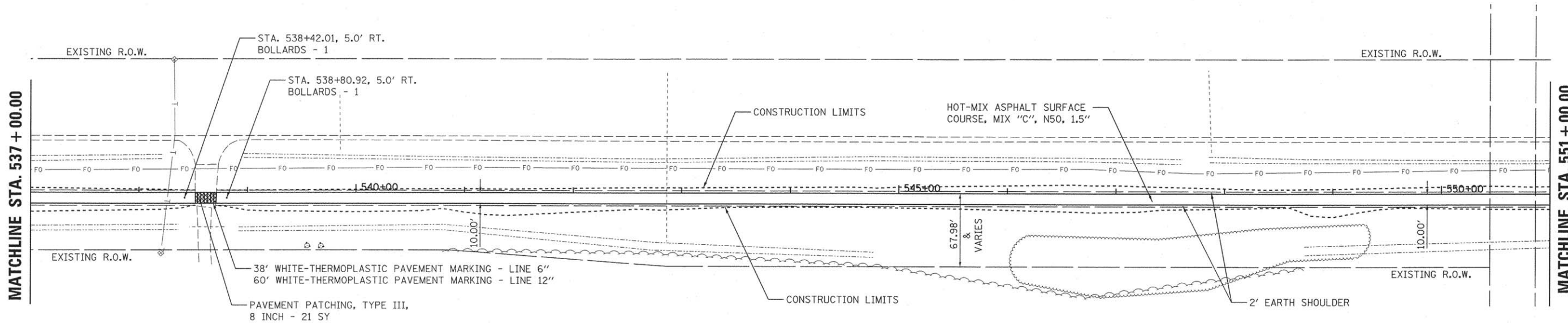
SCALE: 1"=50' SHEET OF SHEETS STA. 522+00 TO STA. 537+00

F.A. RTE.	SECTION	COUNTY	TOTAL SHEETS	SHEET NO.
	14-00001-04-BT	McLEAN	18	9
CONTRACT NO. 91518			ILLINOIS FED. ROAD DISTRICT TE-005(112)	



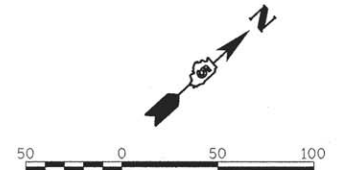
PLAN	SURVEYED	BY	DATE
NOTE BOOK	ALIGNED		
NO.	RT. OF WAY CHECKED		
	CADD FILE NAME		

PROFILE	PROPOSED	BY	DATE
NOTE BOOK	GRADES CHECKED		
NO.	B.M. NOTED		
	STRUCTURE NOTATIONS CHD		



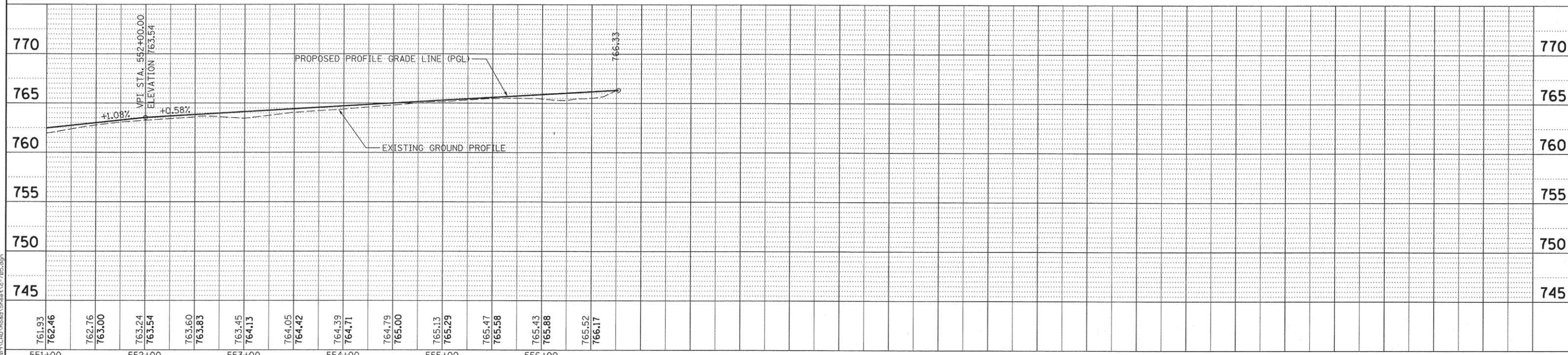
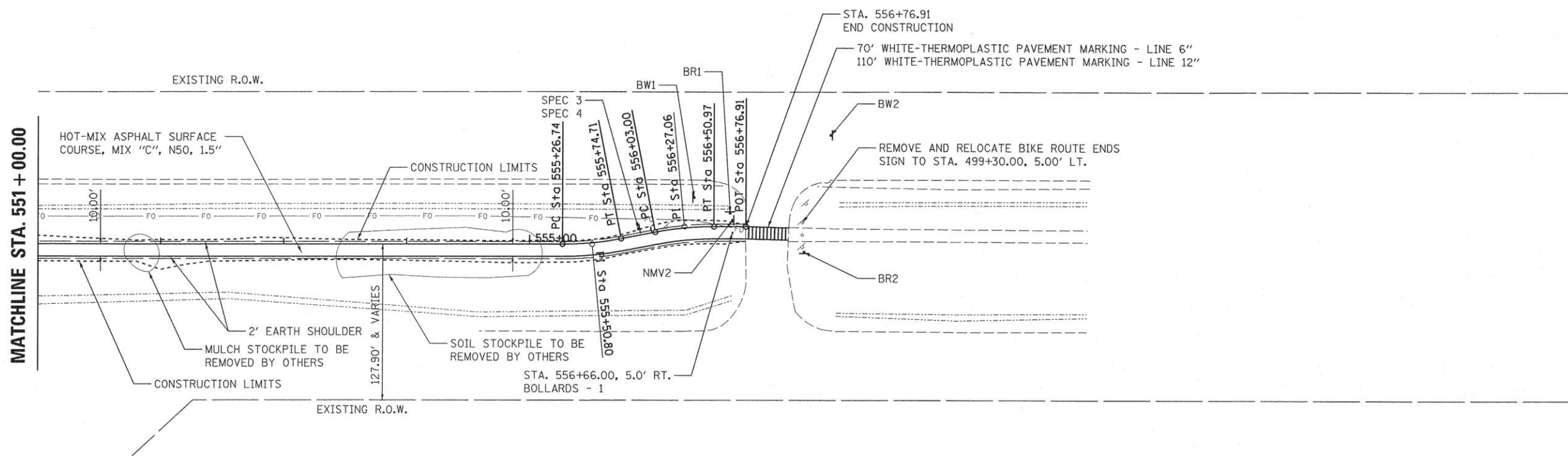
FILE NAME =	USER NAME = becks@1673	DESIGNED - BAB	REVISED -	STATE OF ILLINOIS DEPARTMENT OF TRANSPORTATION	US ROUTE 66 BIKE TRAIL PLAN AND PROFILE	F.A. RT.	SECTION	COUNTY	TOTAL SHEETS	SHEET NO.	
I:\15\Jobs\15L\0009\CAD\Road\Sheet\c-704.dgn		DRAWN - RLA	REVISED -			14-00001-04-BT	McLEAN	18	10		
PLOT SCALE = 100.0000' / in.		CHECKED - CAL	REVISED -			CONTRACT NO. 91518					
PLOT DATE = 2/12/2016		DATE - 2/8/16	REVISED -			ILLINOIS FED. ROAD DISTRICT TE-005(112)					

LAYOUT	BAB	2/5/16
DRAWN	RLA	2/5/16
REVIEWED	CAL	2/5/16



PLAN	SURVEYED	BY	DATE
	PLOTTED		
	CHECKED		
	RT. OF WAY CHECKED		
	CADD FILE NAME		

PROFILE	SURVEYED	BY	DATE
	PLOTTED		
	CHECKED		
	B.M. NOTED		
	STRUCTURE NOTATIONS C/D/R		



LAYOUT	BAB	2/5/16
DRAWN	RLA	2/5/16
REVIEWED	CAL	2/5/16

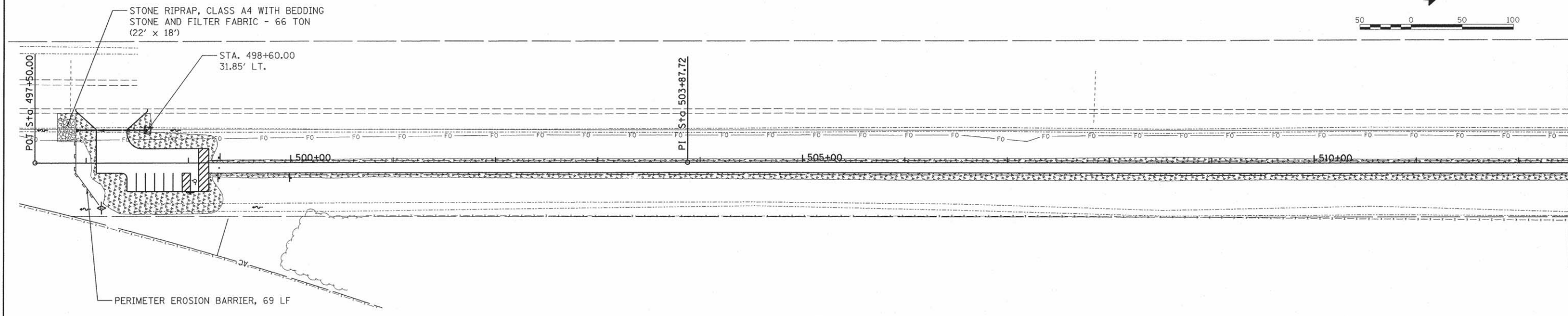
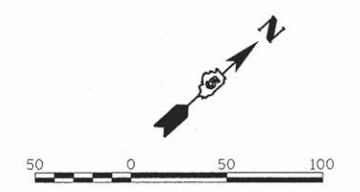
FILE NAME =	USER NAME = becks@1673	DESIGNED - BAB	REVISED -
I:\15Jobs\15L0009\CAD\Road\Sheet\c-705.dgn		DRAWN - RLA	REVISED -
Default		CHECKED - CAL	REVISED -
		DATE - 2/8/16	REVISED -

**STATE OF ILLINOIS
DEPARTMENT OF TRANSPORTATION**

**US ROUTE 66 BIKE TRAIL
PLAN AND PROFILE**





SCALE: 1"=50' SHEET OF SHEETS STA. 552+00 TO STA. 556+76.91

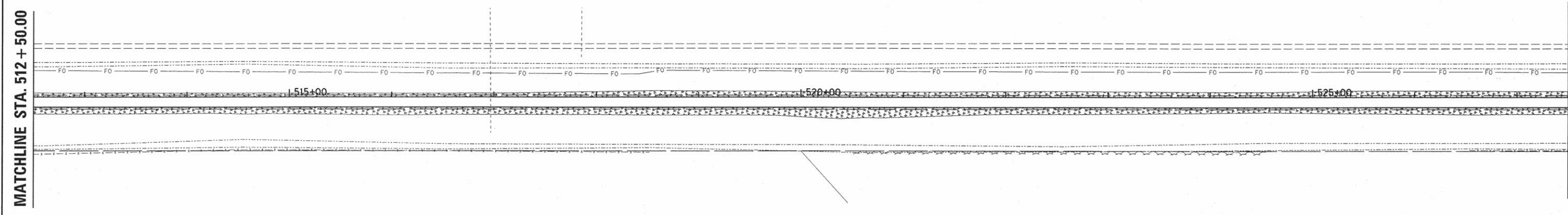
F.A. RTE.	SECTION	COUNTY	TOTAL SHEETS	SHEET NO.
	14-00001-04-BT	McLEAN	18	11
CONTRACT NO. 91518				
ILLINOIS FED. AID PROJECT TE-005(112)				



MATCHLINE STA. 512 + 50.00

LEGEND

-  PERIMETER EROSION BARRIER
-  TEMPORARY DITCH CHECKS
-  INLET AND PIPE PROTECTION
-  SEEDING, CLASS 4
MULCH, METHOD 2



MATCHLINE STA. 512 + 50.00

MATCHLINE STA. 527 + 50.00

© Copyright Hanson Professional Services Inc. 2016
HANSON
 Hanson Professional Services Inc.

LAYOUT	BAB	2/5/16
DRAWN	RLA	2/5/16
REVIEWED	CAL	2/5/16

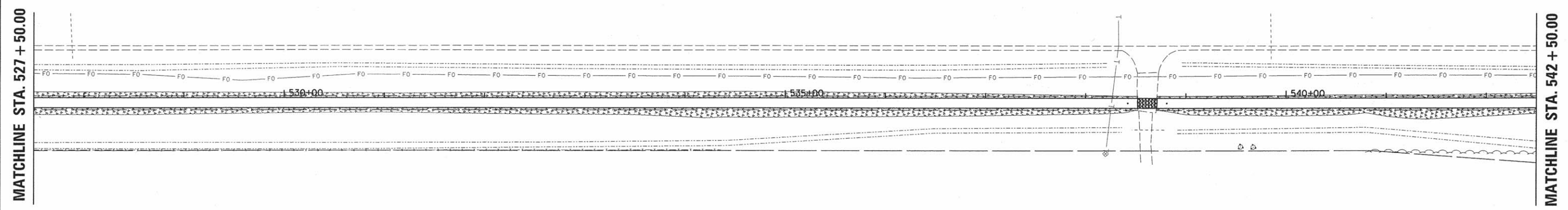
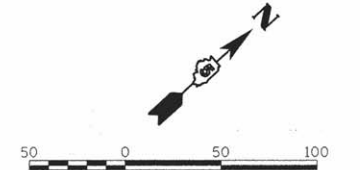
FILE NAME =	USER NAME = becks01673	DESIGNED - BAB	REVISED -
J:\15Jobs\15L0009\CAD\Road\Sheet\c-101eros.dgn		DRAWN - RLA	REVISED -
		CHECKED - CAL	REVISED -
		DATE - 2/8/16	REVISED -

**STATE OF ILLINOIS
DEPARTMENT OF TRANSPORTATION**

**US ROUTE 66 BIKE TRAIL
EROSION AND SEDIMENT CONTROL PLANS**

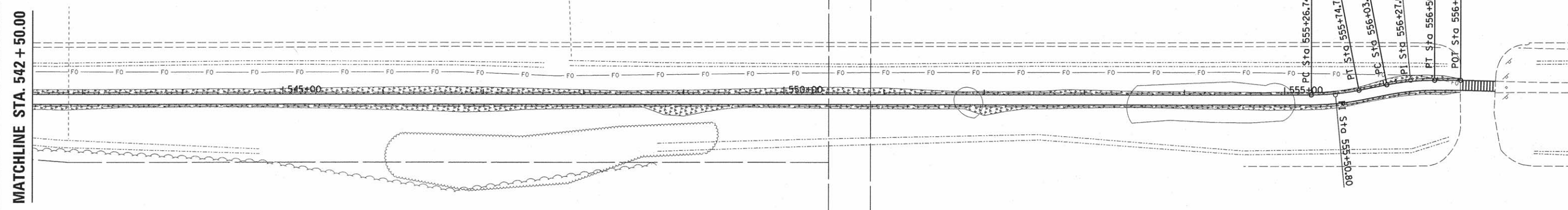
SCALE: 1"=50' SHEET OF SHEETS STA. 497+50 TO STA. 527+50

F.A. RTE.	SECTION	COUNTY	TOTAL SHEETS	SHEET NO.
	14-00001-04-BT	McLEAN	18	12
CONTRACT NO.91518			ILLINOIS FED. AID PROJECT TE-0005(112)	



LEGEND

- PERIMETER EROSION BARRIER
- TEMPORARY DITCH CHECKS
- INLET AND PIPE PROTECTION
- SEEDING, CLASS 4
MULCH, METHOD 2



© Copyright Hanson Professional Services Inc. 2016
HANSON
 Hanson Professional Services Inc.

LAYOUT	BAB	2/5/16
DRAWN	RLA	2/5/16
REVIEWED	CAL	2/5/16
I:\15\Jobs\15L0009\CAD\Road\Sheet\c-102\erod.dgn		

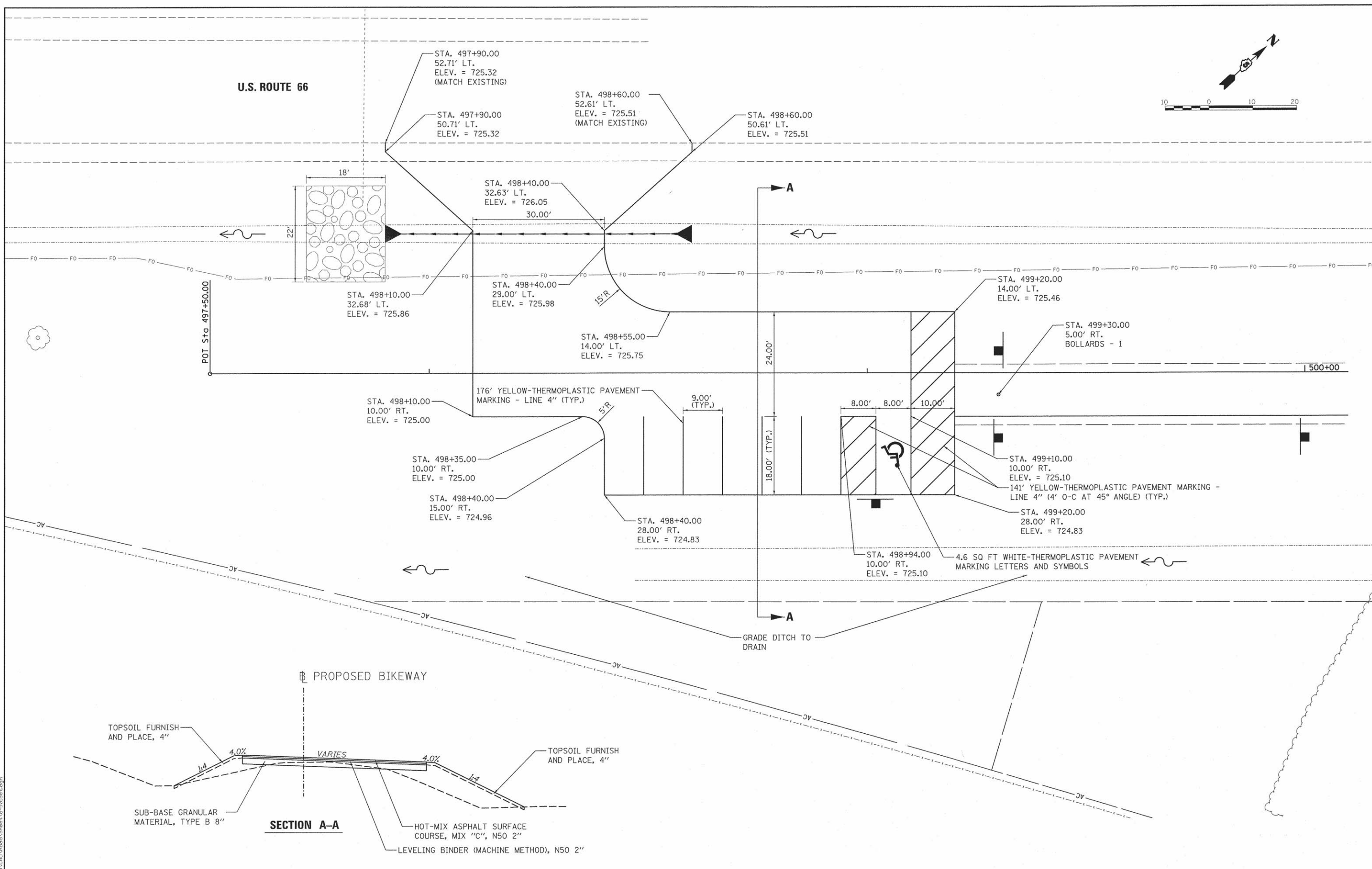
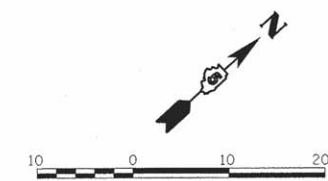
FILE NAME =	I:\15\Jobs\15L0009\CAD\Road\Sheet\c-102\erod.dgn	USER NAME =	becke01673	DESIGNED -	BAB	REVISED -	
Default		PLOT SCALE =	100.0000' / 1" =	DRAWN -	RLA	REVISED -	
		PLOT DATE =	2/12/2016	CHECKED -	CAL	REVISED -	
				DATE -	2/8/16	REVISED -	

STATE OF ILLINOIS
DEPARTMENT OF TRANSPORTATION

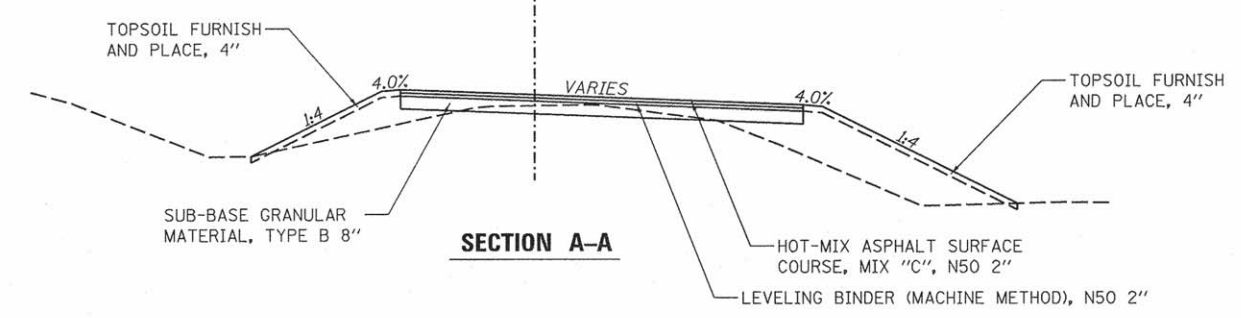
US ROUTE 66 BIKE TRAIL
EROSION AND SEDIMENT CONTROL PLANS
 SCALE: 1"=50' SHEET OF SHEETS STA. 527+50 TO STA. 556+76.91

F.A. RTE.	SECTION	COUNTY	TOTAL SHEETS	SHEET NO.
	14-00001-04-BT	MCLEAN	18	13
CONTRACT NO. 91518				
ILLINOIS FED. AID PROJECT TE-005(112)				

U.S. ROUTE 66



PROPOSED BIKEWAY



© Copyright Hanson Professional Services Inc. 2016
HANSON
 Hanson Professional Services Inc.

LAYOUT	BAB	2/5/16
DRAWN	RLA	2/5/16
REVIEWED	CAL	2/5/16

FILE NAME = I:\15\Jobs\15L0009\CAD\Road\Sheet\c-501.dgn
 USER NAME = beckab01673
 PLOT SCALE = 20,0000 "/>

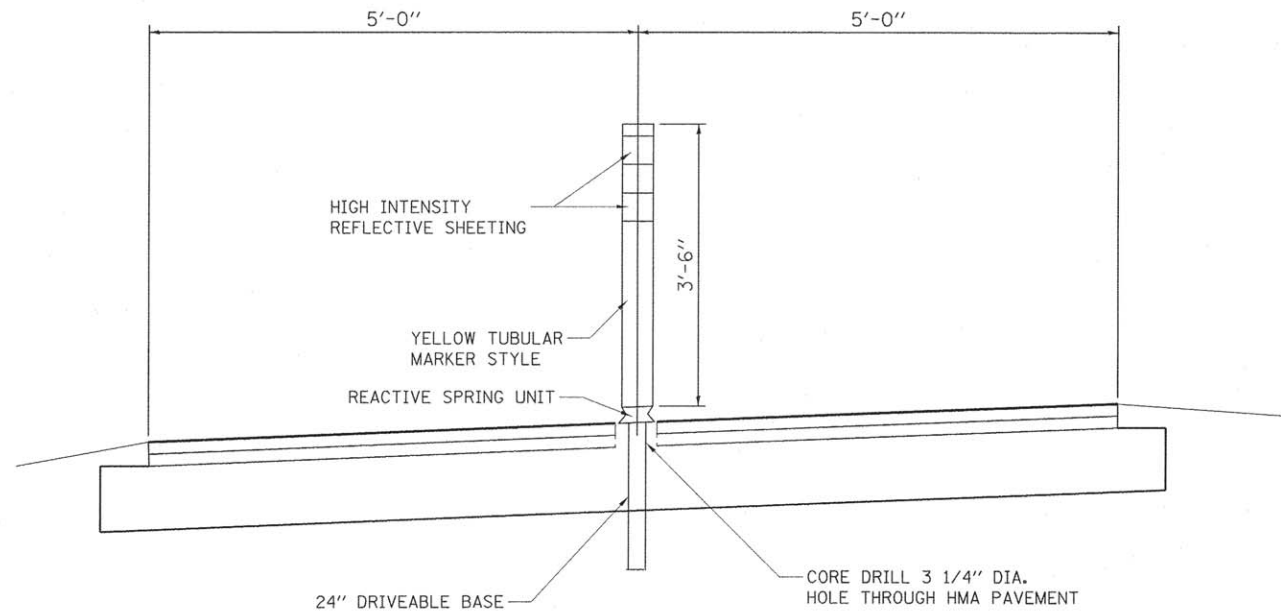
DESIGNED - BAB	REVIS
DRAWN - RLA	REVIS
CHECKED - CAL	REVIS
DATE - 2/8/16	REVIS

STATE OF ILLINOIS
DEPARTMENT OF TRANSPORTATION

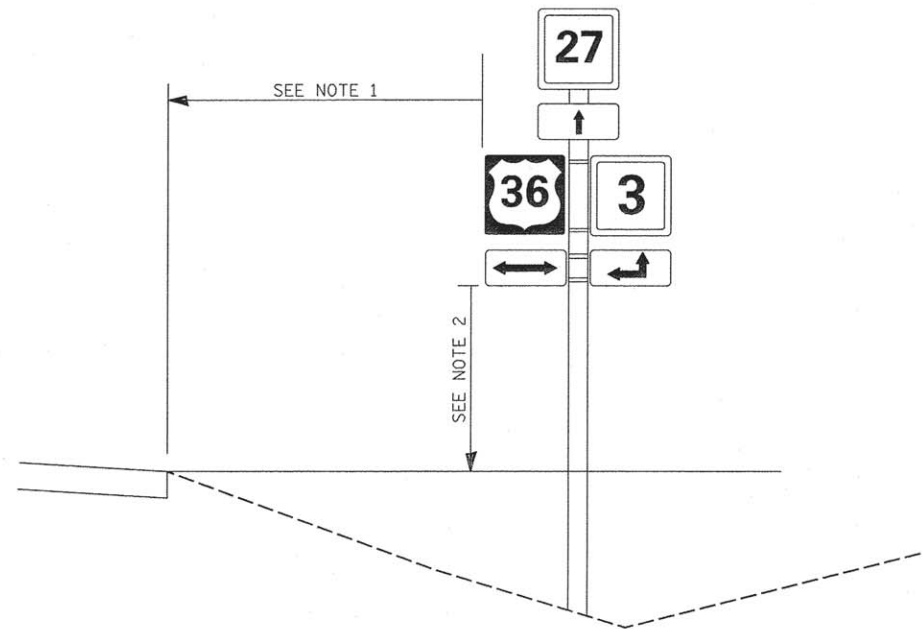
US ROUTE 66 BIKE TRAIL
PARKING LOT LAYOUT DETAIL

SCALE: 1"=10' SHEET OF SHEETS STA. TO STA.

F.A. RTE.	SECTION	COUNTY	TOTAL SHEETS	SHEET NO.
	14-00001-04-BT	MGLEAN	18	14
CONTRACT NO.91518				
ILLINOIS FED. AID PROJECT TE-00D5(112)				



BOLLARD ASSEMBLY DETAIL



NOTE 1 - 12' MIN. FROM EDGE OF PAVEMENT OF ROADWAY
 3' MIN. - 6' MAX. FROM EDGE OF PAVEMENT OF BIKEWAY
 NOTE 2 - 4' MIN. - 5' MAX. FOR BIKEWAY SIGNS
 7' FOR ROADWAY SIGNS

SIGN PLACEMENT DETAIL

PLAN LABEL CODE: NMV
 LOCATION: BIKEWAY ONLY

 MUTCD CODE: R5-3
 24" X 24"

PLAN LABEL CODE: SPEC
 LOCATION: BIKEWAY ONLY

 MUTCD CODE: N/A
 10" X 7"

PLAN LABEL CODE: BR
 LOCATION: ROADWAY ONLY

 MUTCD CODE: D11-1
 24" X 18"

 MUTCD CODE: M6-4
 12" X 9"

PLAN LABEL CODE: BW
 LOCATION: ROADWAY ONLY

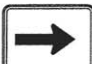
 MUTCD CODE: W11-1
 24" X 24"
 FLUORESCENT YELLOW-GREEN

PLAN LABEL CODE: HC
 LOCATION: PARKING LOT ONLY

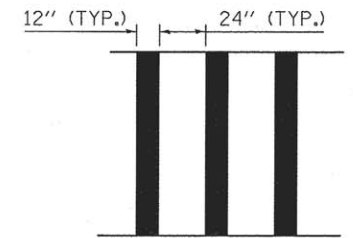
 MUTCD CODE: R7-8
 12" X 18"


 MUTCD CODE: R7-1101
 6" X 12"

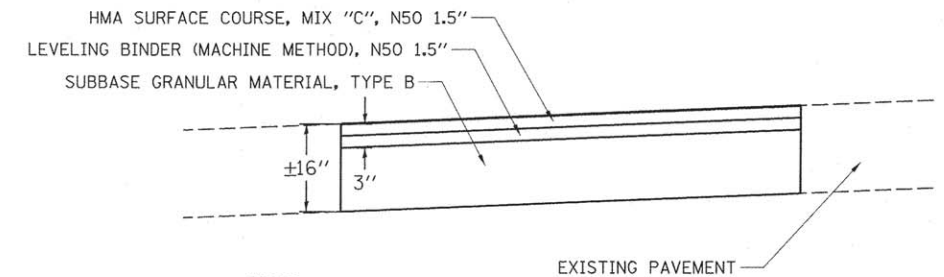

 MUTCD CODE: W16-5P (L)
 24" X 12"
 FLUORESCENT YELLOW-GREEN


 MUTCD CODE: W16-5P (R)
 24" X 12"
 FLUORESCENT YELLOW-GREEN

SIGNING LEGEND



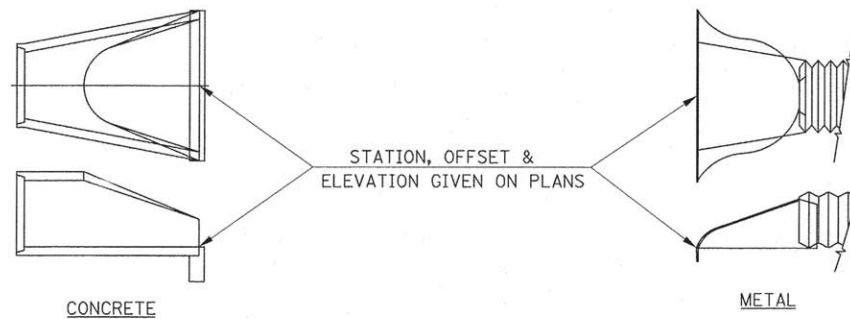
ROADWAY CROSSWALK PAVEMENT MARKING LAYOUT



NOTES:

- LEVELING BINDER (MACHINE METHOD), N50 1.5" & HMA SURFACE COURSE, MIX "C", N50 1.5" SHALL BE PAID FOR SEPARATELY.

PAVEMENT PATCHING DETAIL



END SECTION OFFSETS

LAYOUT	BAB	2/5/16
DRAWN	RLA	2/5/16
REVIEWED	CAL	2/5/16

FILE NAME =	USER NAME = becks01673	DESIGNED - BAB	REVISED -
i:\15\Jobs\15L\0009\CAD\Road\Sheet\c-502.dgn		DRAWN - RLA	REVISED -
	PLOT SCALE = 10.0000' / in.	CHECKED - CAL	REVISED -
Default	PLOT DATE = 2/12/2016	DATE - 2/8/16	REVISED -

STATE OF ILLINOIS
 DEPARTMENT OF TRANSPORTATION

US ROUTE 66 BIKE TRAIL
 MISCELLANEOUS DETAILS

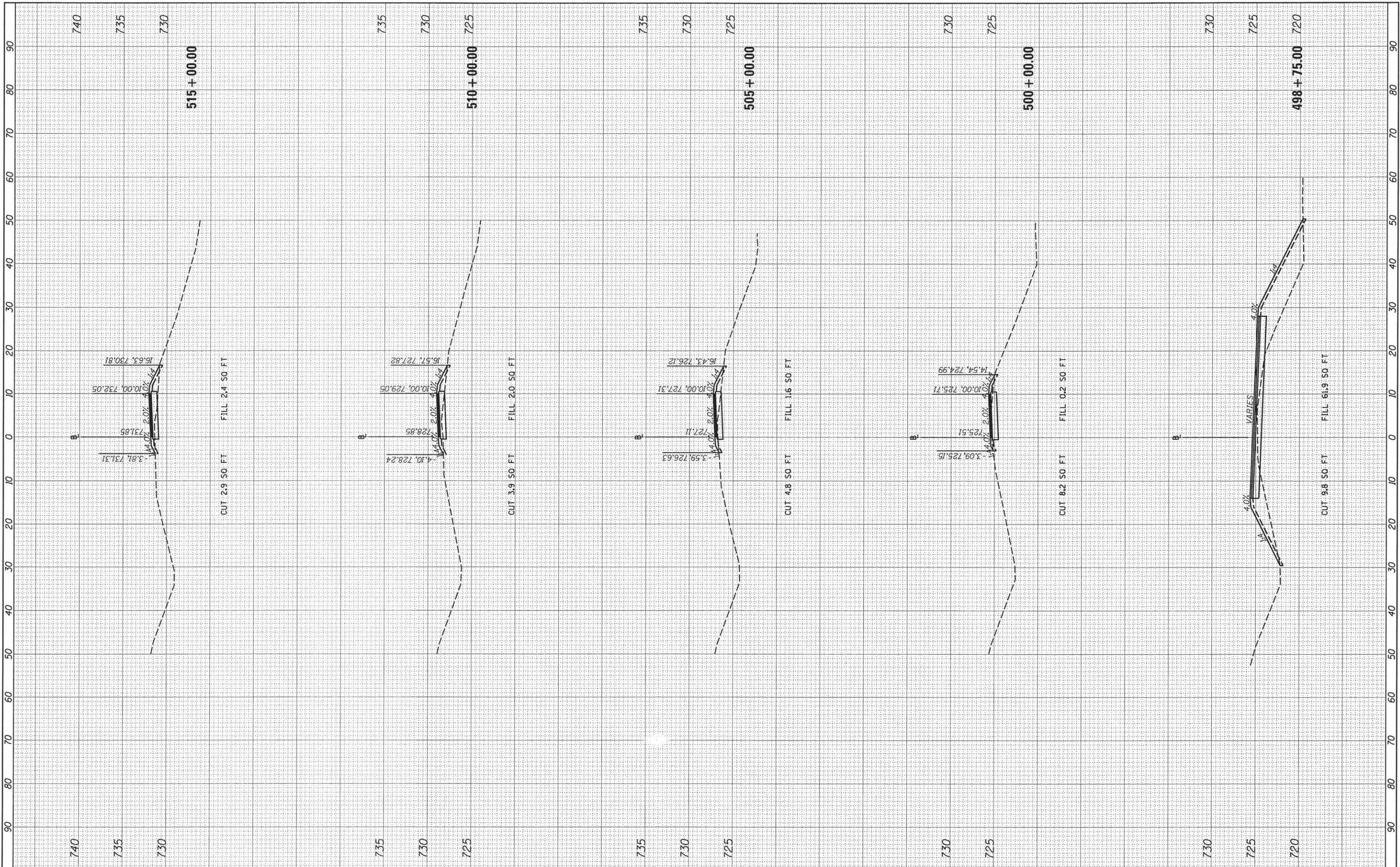
SCALE: N/A SHEET OF SHEETS STA. TO STA.

F.A. RTE.	SECTION	COUNTY	TOTAL SHEETS	SHEET NO.
	14-00001-04-BT	McLEAN	18	15
			CONTRACT NO. 91518	
ILLINOIS FED. AID PROJECT TE-00D5(112)				

FINAL SURVEY	SURVEYED	BY	DATE
NOTE BOOK	PLOTTED		
NO.	TEMPLATE		
	AREAS		
	CHECKED		

© Copyright Hanson Professional Services Inc. 2016
HANSON
 Hanson Professional Services Inc.

ORIGINAL SURVEY	SURVEYED	BY	DATE
NOTE BOOK	PLOTTED		
NO.	TEMPLATE		
	AREAS		
	CHECKED		



FILE NAME = I:\15Jobs\15L0009\CAD\Road\Sheet\c-301.dgn
 USER NAME = becks01673
 PLOT SCALE = 20.0000' / in.
 PLOT DATE = 2/8/2016

DESIGNED - BAB
 DRAWN - RLA
 CHECKED - CAL
 DATE - 2/8/16

REVISED -
 REVISED -
 REVISED -
 REVISED -

**STATE OF ILLINOIS
 DEPARTMENT OF TRANSPORTATION**

SCALE: 1"=10'
 SHEET OF SHEETS STA. 498+75.00 TO STA. 515+00.00

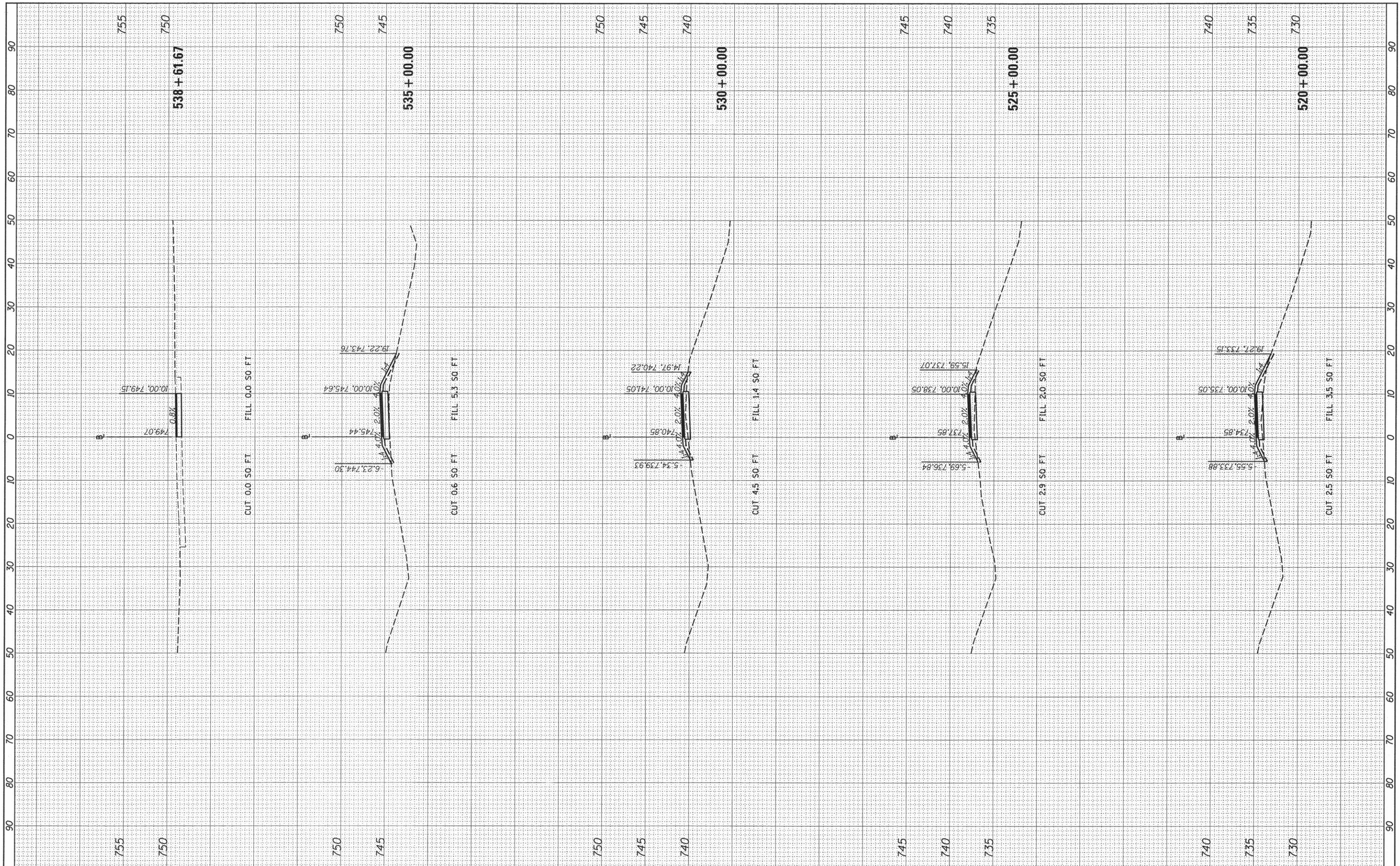
**US ROUTE 66 BIKE TRAIL
 CROSS SECTIONS**

F.A.U. RTE.	SECTION	COUNTY	TOTAL SHEETS	SHEET NO.
6595	14-00001-04-BT	McLEAN	18	16
CONTRACT NO. 91518			ILLINOIS FED. AID PROJECT TE-00D5(112)	

FINAL SURVEY	SURVEYED	BY	DATE
NOTE BOOK	PLOTTED		
NO.	TEMPLATE		
	AREAS		
	CHECKED		



ORIGINAL SURVEY	SURVEYED	BY	DATE
NOTE BOOK	PLOTTED		
NO.	TEMPLATE		
	AREAS		
	CHECKED		



FILE NAME = I:\153\jobs\15L0009\CAD\Road\Sheet\c-301.dgn
 Default

USER NAME = becks01673
 DESIGNED - BAB
 DRAWN - RLA
 CHECKED - CAL
 DATE - 2/8/16

REVISED -
 REVISED -
 REVISED -
 REVISED -

**STATE OF ILLINOIS
 DEPARTMENT OF TRANSPORTATION**

SCALE: 1"=10'
 SHEET OF SHEETS STA. 520+00.00 TO STA.

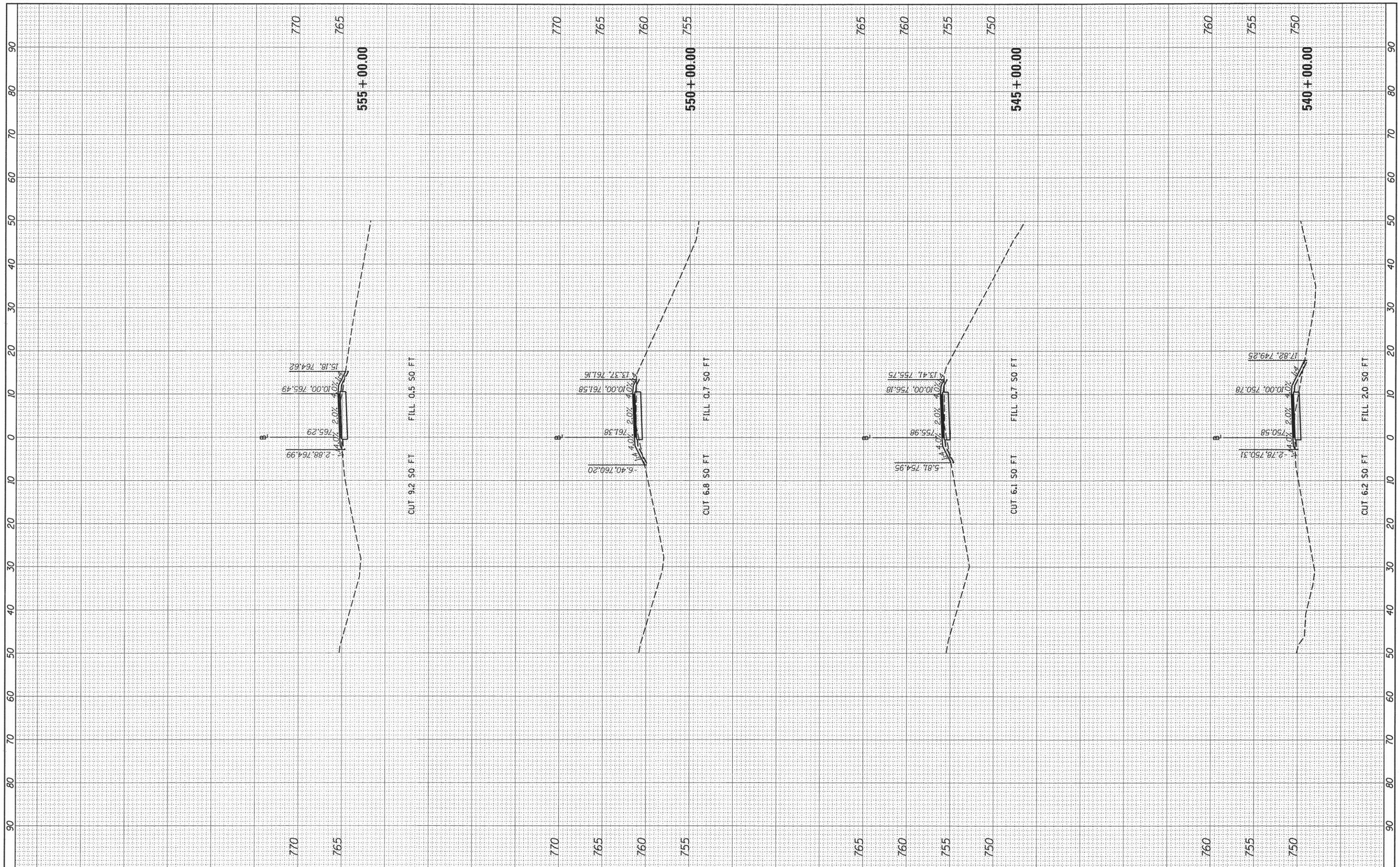
**US ROUTE 66 BIKE TRAIL
 CROSS SECTIONS**

F.A.U. RTE.	SECTION	COUNTY	TOTAL SHEETS	SHEET NO.
6595	14-00001-04-BT	McLEAN	18	17
CONTRACT NO.91518			ILLINOIS FED. AID PROJECT TE-00D5(112)	

FINAL SURVEY NO.	
SURVEYED	
PLOTTED	
TEMPLATE	
AREAS	
CHECKED	
BY	
DATE	



ORIGINAL SURVEY NO.	
SURVEYED	
PLOTTED	
TEMPLATE	
AREAS	
CHECKED	
BY	
DATE	



FILE NAME = I:\15\Jobs\15L0009\CAD\Road\Sheet\c-301.dgn
 USER NAME = beck@1673
 PLOT SCALE = 20.0000' / in.
 PLOT DATE = 2/8/2016

DESIGNED -	BAB	REVISED -	
DRAWN -	RLA	REVISED -	
CHECKED -	CAL	REVISED -	
DATE -	2/8/16	REVISED -	

**STATE OF ILLINOIS
DEPARTMENT OF TRANSPORTATION**

**US ROUTE 66 BIKE TRAIL
CROSS SECTIONS**

SCALE: 1"=10' SHEET OF SHEETS STA. 540+00.00 TO STA.

F.A.U. RTE.	SECTION	COUNTY	TOTAL SHEETS	SHEET NO.
6595	14-00001-04-BT	MCLEAN	18	18
CONTRACT NO. 91518			ILLINOIS FED. AID PROJECT TE-00D5(112)	