

|                       |            |                    |              |           |
|-----------------------|------------|--------------------|--------------|-----------|
| F.A.P. RTE.           | SECTION    | COUNTY             | TOTAL SHEETS | SHEET NO. |
| VARIOUS               | 2009-108 I | COOK/KANE          | 23           | 1         |
| FED. ROAD DIST. NO. 1 | ILLINOIS   | CONTRACT NO. 60J08 |              |           |

\* 23-1 = 22

FOR INDEX OF SHEETS, SEE SHEET NO. 2

STATE OF ILLINOIS  
DEPARTMENT OF TRANSPORTATION  
DIVISION OF HIGHWAYS

**PROPOSED  
HIGHWAY PLANS**

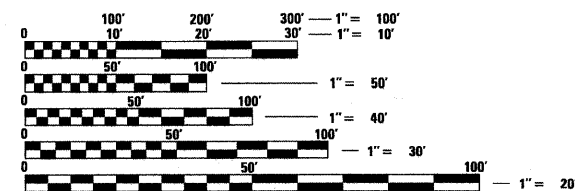
VARIOUS ROUTES  
SECTION 2009-108 I  
VARIOUS LOCATIONS  
SCOUR COUNTERMEASURES  
COOK AND KANE COUNTIES  
C-91-179-10

IMPROVEMENT LOCATED IN THE  
VILLAGE OF GLENCOE  
VILLAGE OF WHEELING  
CITY OF PARK RIDGE  
VILLAGE OF SUGAR GROVE



LOCATION OF SECTION INDICATED THIS: - [Symbol]

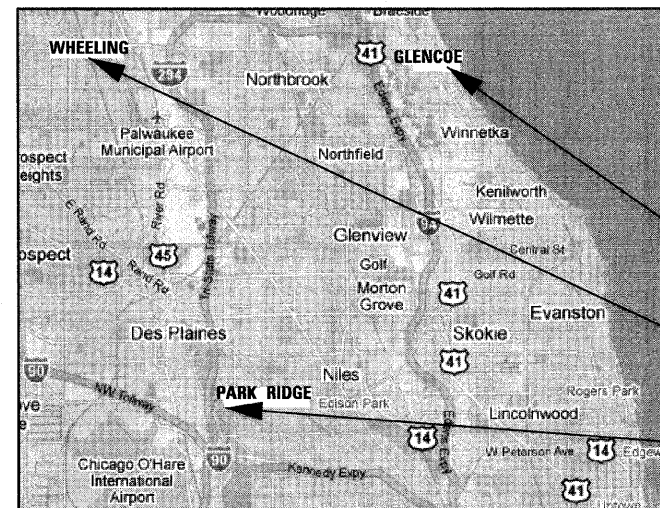
DISTRICT ONE - PLAN PREP ENGINEER: KEN ENG (847) 705-4247



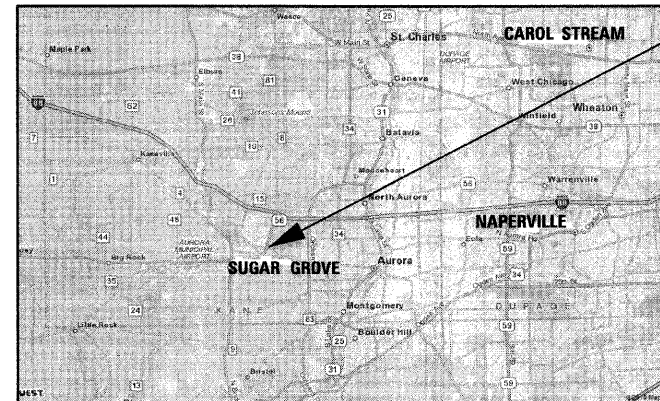
FULL SIZE PLANS HAVE BEEN PREPARED USING STANDARD ENGINEERING SCALES. REDUCED SIZED PLANS WILL NOT CONFORM TO STANDARD SCALES. IN MAKING MEASUREMENTS ON REDUCED PLANS, THE ABOVE SCALES MAY BE USED.

J.U.L.I.E.  
JOINT UTILITY LOCATING INFORMATION FOR EXCAVATORS  
1-800-892-0123  
OR 811

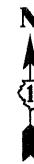
CONTRACT NO. 60J08



- LOCATION 2: S.N. 016-0618, SHERIDAN ROAD OVER RAVINE NO. 2
- LOCATION 1: S.N. 016-0556, MCHENRY ROAD OVER WHEELING DRAINAGE DITCH
- LOCATION 3: S.N. 016-0829, TOUHY AVENUE OVER DES PLAINES RIVER



- LOCATION 4: S.N. 045-0026 (E.B.); 045-0027 (W.B.) IL 56 OVER BLACKBERRY CREEK



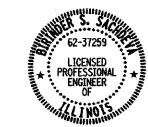
STATE OF ILLINOIS  
DEPARTMENT OF TRANSPORTATION  
DIVISION OF HIGHWAYS

SUBMITTED MAY 11, 2010

*Diane M. O'Keefe*  
DEPUTY DIRECTOR OF HIGHWAYS, REGION ONE ENGINEER

June 05 2010  
*Scott E. Stitt, P.E.*  
acting ENGINEER OF DESIGN AND ENVIRONMENT

June 05 2010  
*Christine M. Reed*  
DIRECTOR OF HIGHWAYS, CHIEF ENGINEER



*Birinder S. Sachdeva* 5-10-10  
BIRINDER S. SACHDEVA, P.E. DATE  
EXPIRES: 11-30-2011  
DRAWING NO. 1-10, 12-16 & 19-23

**CR & A**  
CHRISTIAN-ROGE & ASSOCIATES, INC.  
ENGINEERS - PLANNERS - SURVEYORS  
211 W. WACKER DRIVE CHICAGO, IL. 0 0  
TELEPHONE 312-3 2-2023

**PRINTED BY THE AUTHORITY  
OF THE STATE OF ILLINOIS**