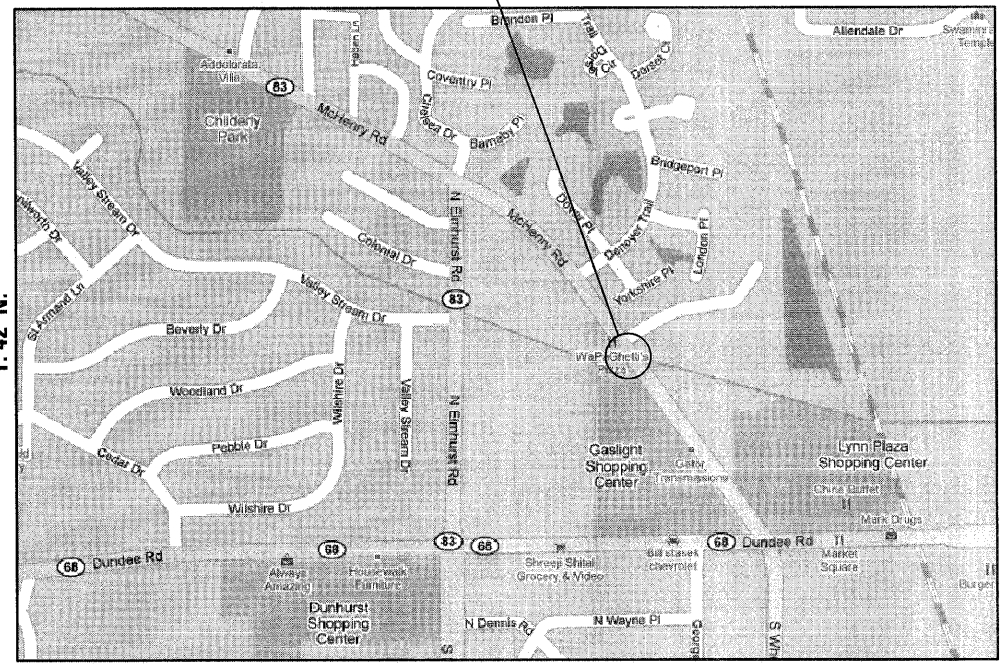


TRAFFIC DATA
SPEED LIMIT = 40 MPH
2007 ADT = 13,400

LOCATION 1 - COOK COUNTY
STRUCTURE NUMBER: 016-0556
MCHENRY ROAD OVER WHEELING DRAINAGE DITCH
LOCATED IN WHEELING TOWNSHIP, VILLAGE OF WHEELING

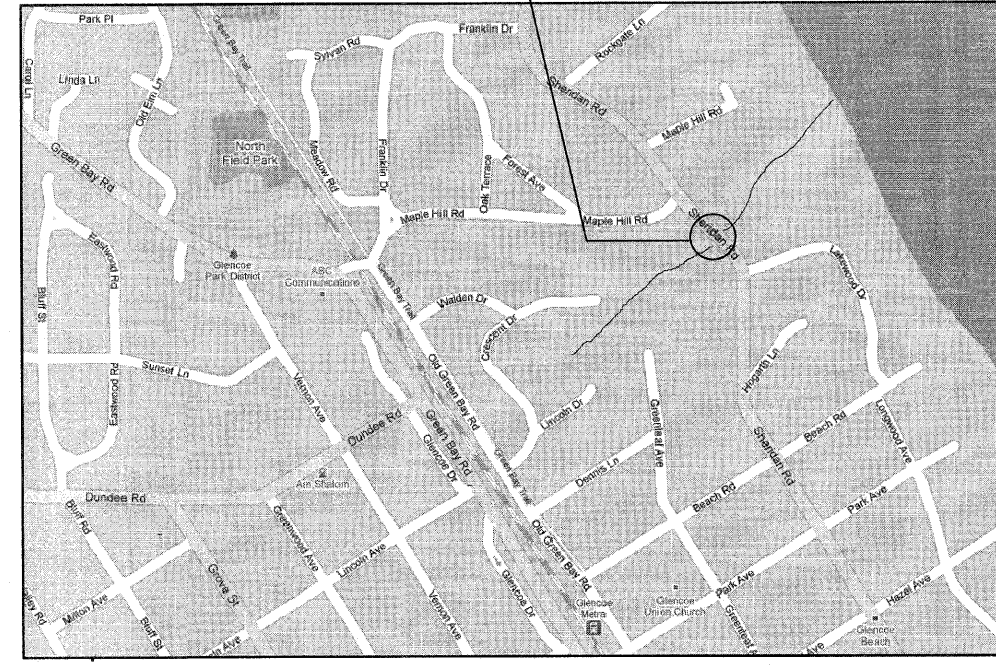


R. 11 E.
R. 12 E.

T. 42 N.

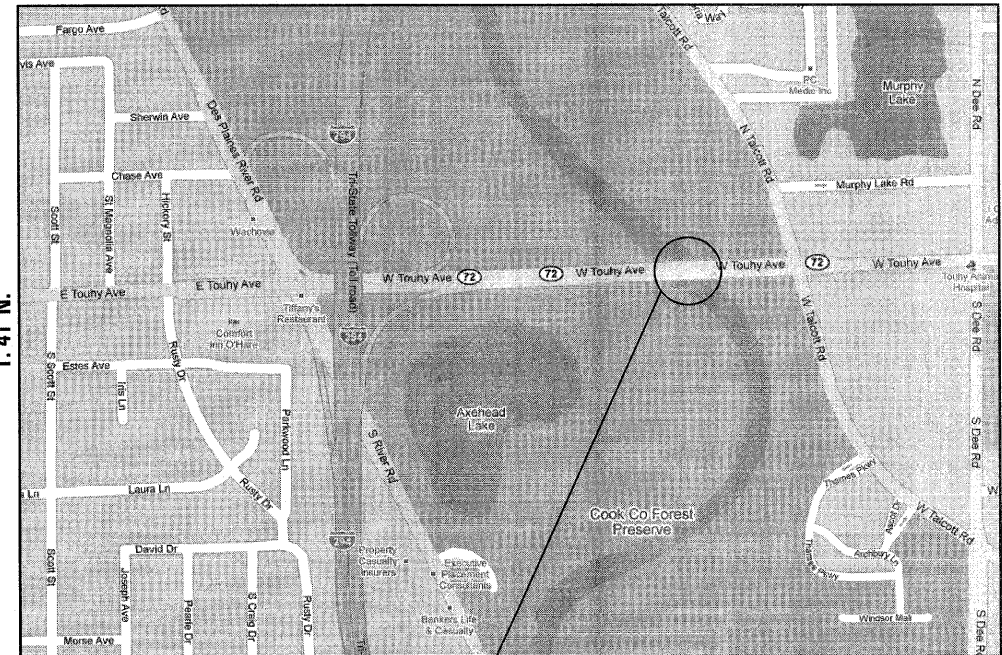
TRAFFIC DATA
SPEED LIMIT = 30 MPH
2007 ADT = 3,500

LOCATION 2 - COOK COUNTY
STRUCTURE NUMBER: 016-0618
SHERIDAN ROAD OVER RAVINE NO. 2
LOCATED IN NEW TRIER TOWNSHIP,
VILLAGE OF GLENCOE



R. 13 E.
R. 7 E.

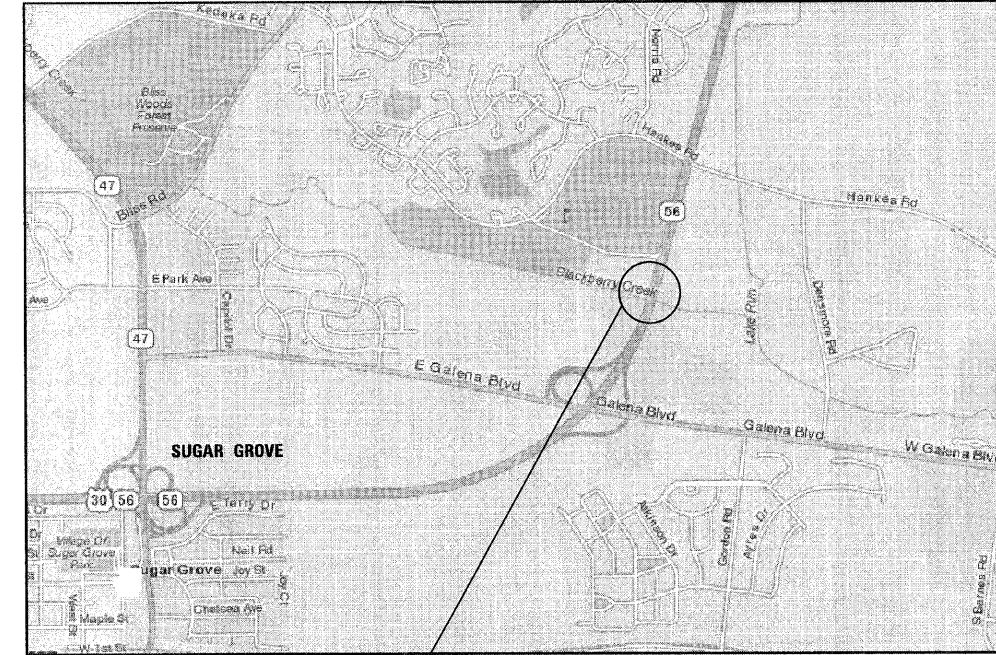
T. 42 N.



LOCATION 3 - COOK COUNTY
STRUCTURE NUMBER: 016-0829
TOUHY AVENUE OVER DES PLAINES RIVER
LOCATED IN MAINE TOWNSHIP,
CITY OF PARK RIDGE

TRAFFIC DATA
SPEED LIMIT = 40 MPH
2007 ADT = 26,600

T. 41 N.



TRAFFIC DATA
SPEED LIMIT = 55 MPH
2007 ADT = 19,800

LOCATION 4 - KANE COUNTY
STRUCTURE NUMBER: 045-0026 (E.B.) ; 045-0027 (W.B.)
IL 56 OVER BLACKBERRY CREEK
LOCATED IN SUGAR GROVE TOWNSHIP,
VILLAGE OF SUGAR GROVE

T. 38 N.



FILE NAME = 0160J08-sht-loc01a.dwg
PLOT DATE = 5/6/2010

CHRISTIAN-ROGE & ASSOCIATES, INC.
ENGINEERS-PLANNERS-SURVEYORS
211 WEST WACKER DRIVE
CHICAGO, ILLINOIS 60606
PHONE: (312)372-2023 FAX: (312)372-5274

DESIGNED - G.F.L.	REVISED -
DRAWN - J.V./K.R.K.	REVISED -
CHECKED - E.J.M.	REVISED -
DATE - APRIL 28, 2010	REVISED -

STATE OF ILLINOIS
DEPARTMENT OF TRANSPORTATION

LOCATION MAPS
SCOUR COUNTERMEASURES - VARIOUS LOCATIONS

SCALE: NONE SHEET NO. 1 OF 1 SHEETS STA. TO STA.

F.A.P. RTE.	SECTION	COUNTY	TOTAL SHEETS	SHEET NO.
VAR.	2009-108 I	COOK/KANE	23	4
CONTRACT NO. 60J08				
FED. ROAD DIST. NO. 1 ILLINOIS FED. AID PROJECT				