

STATE OF ILLINOIS
DEPARTMENT OF TRANSPORTATION
DIVISION OF HIGHWAYS

**PROPOSED
HIGHWAY PLANS**

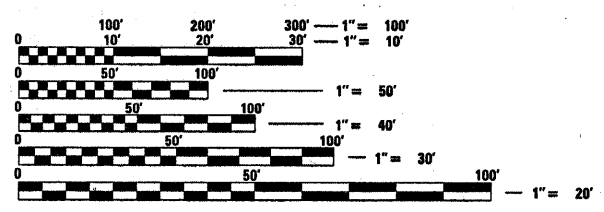
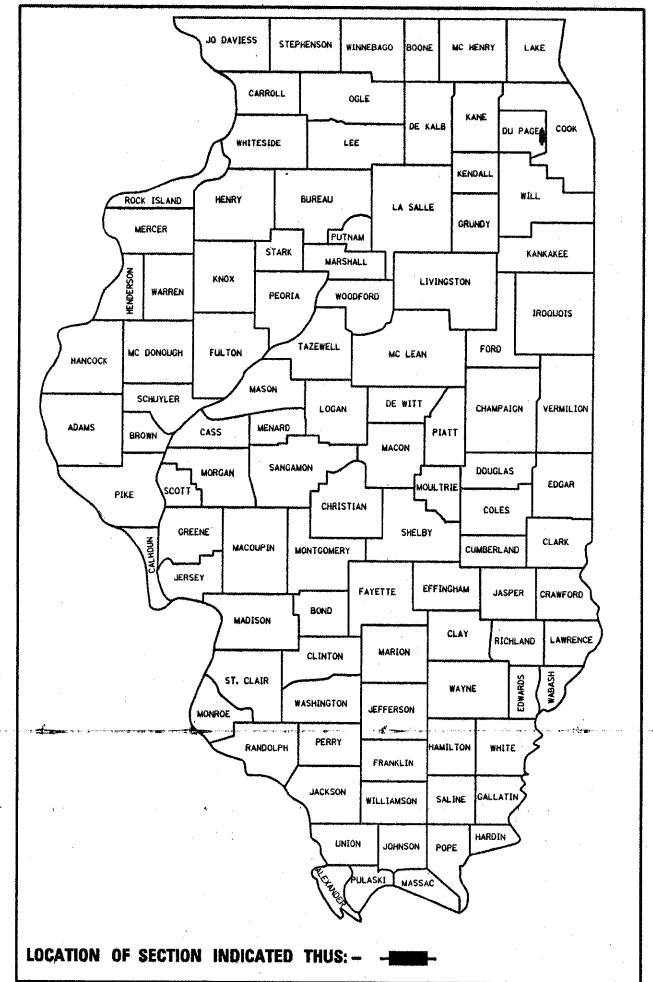
VARIOUS
AT VARIOUS DUPAGE COUNTY LOCATIONS
SECTION: 2010-032-PCC-PP
RESURFACING
DUPAGE COUNTY
C-91-600-10

F.A. RTE.	SECTION	COUNTY	TOTAL SHEETS	SHEET NO.
VAR.	2010-032-PCC-PP	DUPAGE	28	1
FED. ROAD DIST. NO. 1	ILLINOIS	CONTRACT NO. 60K79		

FOR INDEX OF SHEETS, SEE SHEET NO. 2

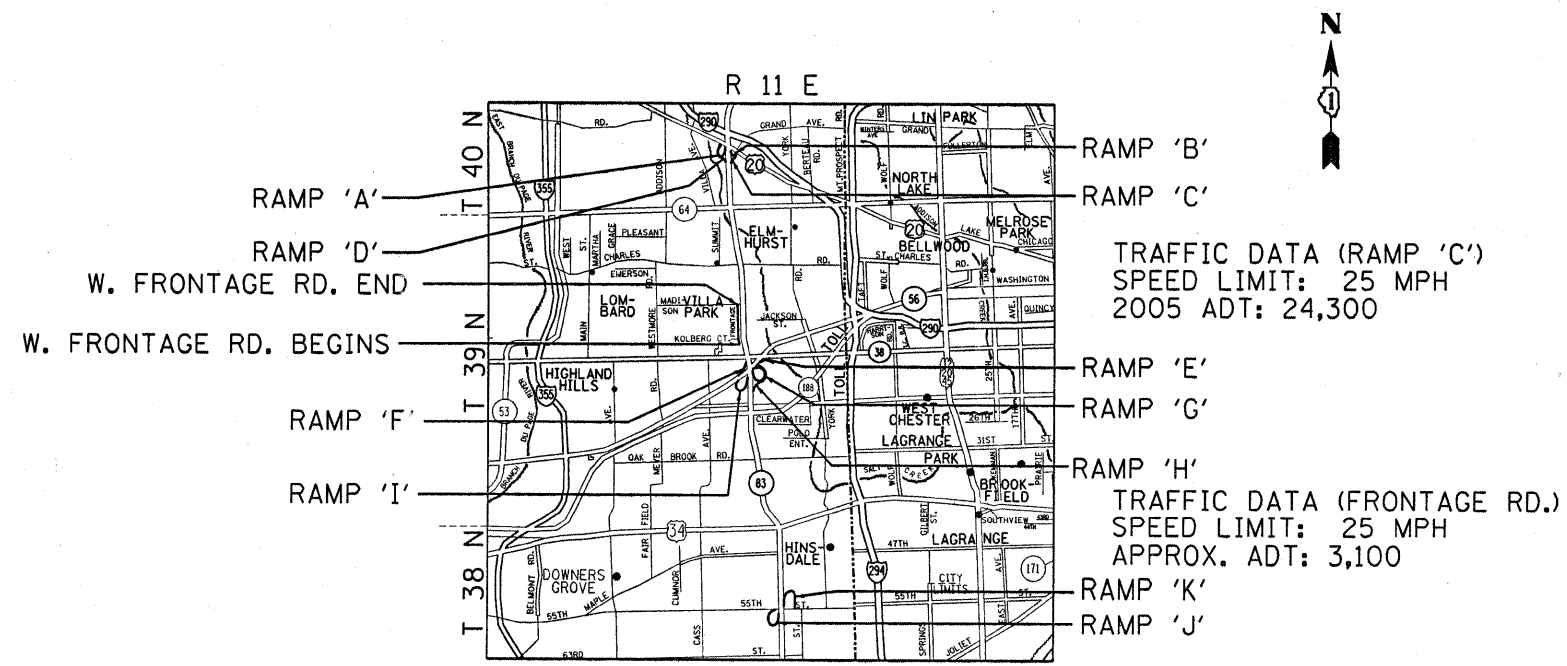
IMPROVEMENT IS LOCATED IN THE CITIES OF ELMHURST AND OAKBROOK TERRACE. ALSO IN THE VILLAGES OF VILLA PARK, HINDSDALE, AND CLARENDON HILLS.

D-91-600-10



FULL SIZE PLANS HAVE BEEN PREPARED USING STANDARD ENGINEERING SCALES. REDUCED SIZED PLANS WILL NOT CONFORM TO STANDARD SCALES. IN MAKING MEASUREMENTS ON REDUCED PLANS, THE ABOVE SCALES MAY BE USED.

J.U.I.E.
JOINT UTILITY LOCATION INFORMATION FOR EXCAVATION
1-800-892-0123
OR 811



ADDISON, YORK & DOWNERS GROVE TOWNSHIPS

GROSS LENGTH OF IMPROVEMENT= NET LENGTH IMPROVEMENT = 12,529 FEET (2.4 MILES)

PROJECT ENGINEER: DAN WILGREEN (847) 705-4240
PROJECT MANAGER: KEN ENG

CONTRACT NO. 60K79

STATE OF ILLINOIS
DEPARTMENT OF TRANSPORTATION
DIVISION OF HIGHWAYS

SUBMITTED MAY 19, 2010

Diane M. O'Keefe acting DEPUTY DIRECTOR OF HIGHWAYS, REGION ENGINEER
JUNE 25 2010
Scott E. Stitt P.E. acting ENGINEER OF DESIGN AND ENVIRONMENT
JUNE 25 2010
Christine M. Reed DIRECTOR OF HIGHWAYS, CHIEF ENGINEER

**PRINTED BY THE AUTHORITY
OF THE STATE OF ILLINOIS**