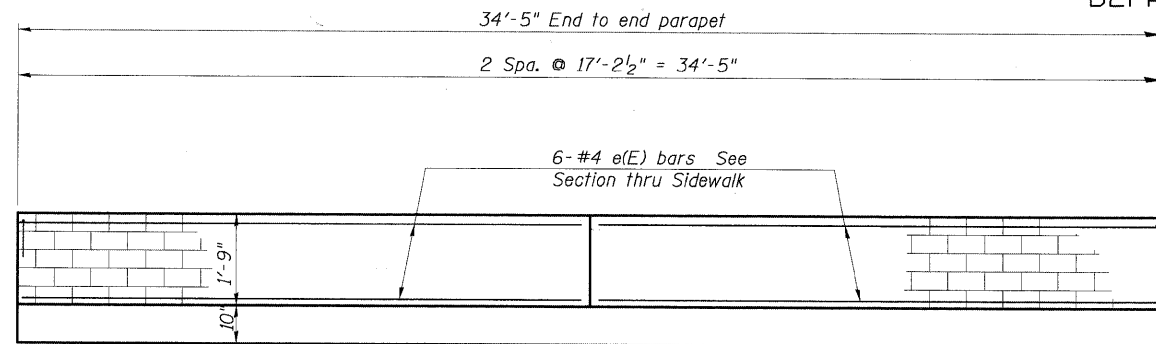
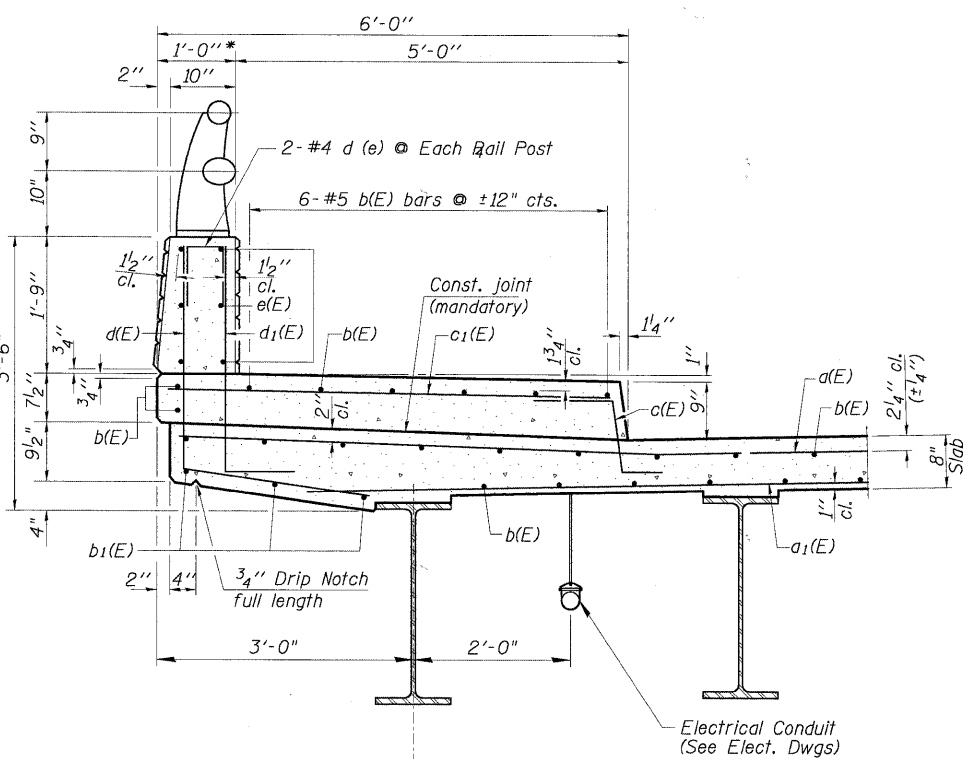


STATE OF ILLINOIS
DEPARTMENT OF TRANSPORTATION

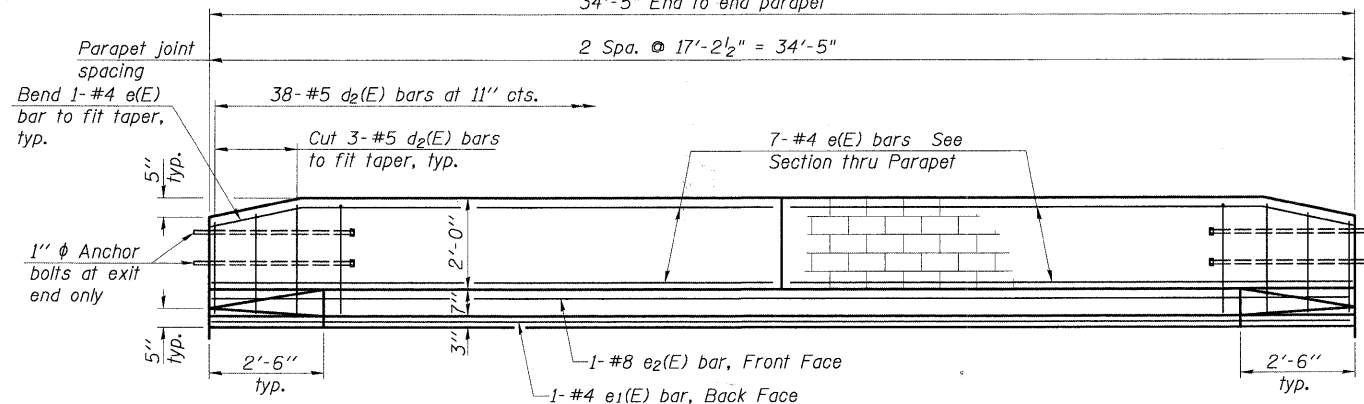


INSIDE ELEVATION OF SIDEWALK
(See Sheet S-9 For Aluminum Railing Post Spacing)

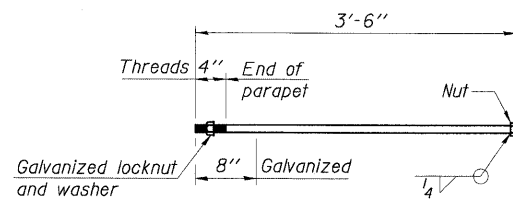


SECTION THRU SIDEWALK

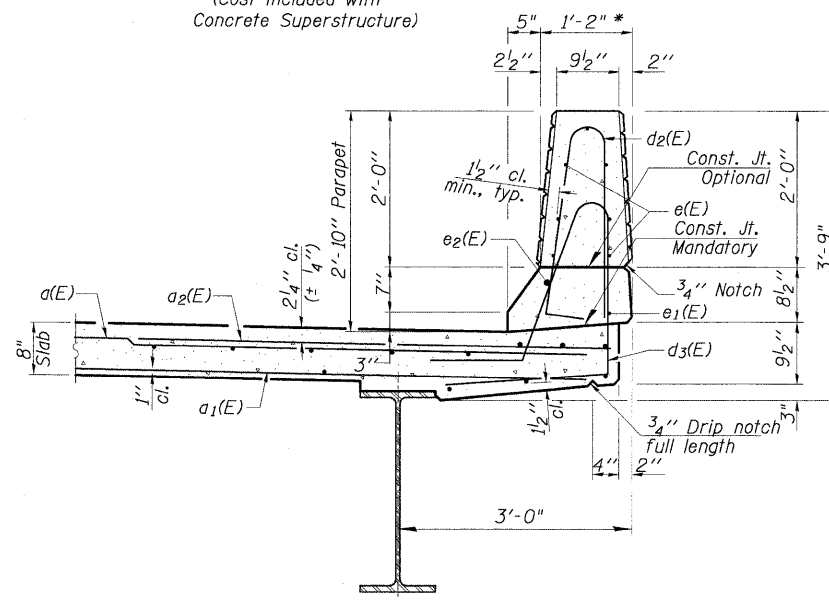
* Dimensions Are of Barrier Only. Add 5/8" For Formliner Relief To Each Side of Barrier.



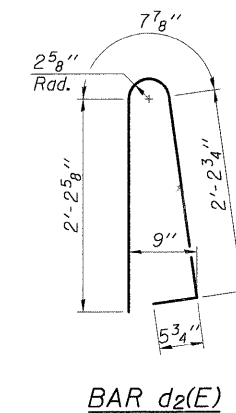
INSIDE ELEVATION OF PARAPET



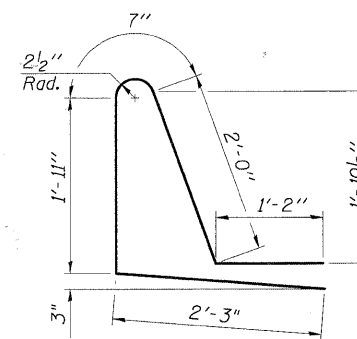
1" ANCHOR BOLT
(Cost included with Concrete Superstructure)



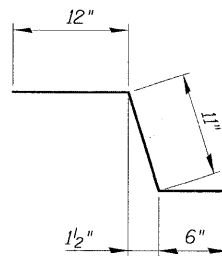
SECTION THRU PARAPET



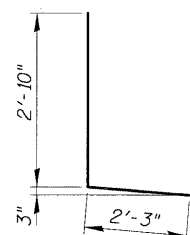
BAR d2(E)



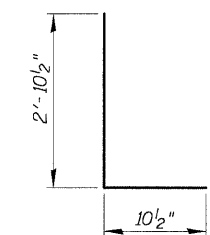
BAR d3(E)



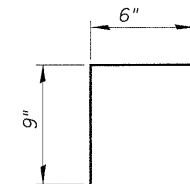
BAR c(E)



BAR d(E)



BAR d1(E)



BAR d4(E)

**SUPERSTRUCTURE
BILL OF MATERIAL**

Bar	No.	Size	Length	Shape
a(E)	56	#5	39'-11"	—
a1(E)	42	#5	39'-3"	—
a2(E)	28	#6	6'-0"	—
b(E)	82	#5	34'-1"	—
c(E)	35	#5	2'-5"	—
c1(E)	35	#5	5'-6"	—
d(E)	35	#4	5'-1"	L
d1(E)	35	#6	3'-9"	L
d2(E)	38	#5	5'-7"	L
d3(E)	38	#5	7'-11"	L
d4(E)	8	#4	2'-0"	L
e(E)	26	#4	16'-11"	—
e1(E)	1	#4	34'-1"	—
e2(E)	1	#8	34'-1"	—
m(E)	4	#6	39'-8"	—
m1(E)	6	#6	40'-1"	—
m2(E)	24	#6	9'-8"	—
m3(E)	10	#6	6'-7"	—
m4(E)	4	#6	2'-8"	—
s(E)	82	#5	5'-1"	—
s1(E)	82	#4	7'-4"	—
v(E)	80	#5	3'-4"	—
Reinforcement Bars, Epoxy Coated		Pound	10,930	
Concrete Superstructure		Cu. Yds.	63.2	
Bar Splicer (E)		Each	80	

Bars indicated thus 1 x 2-#8 etc. indicates 1 line of bars with 2 lengths per line.

SUPERSTRUCTURE DETAILS
WHITEHALL AVENUE OVER
ADDISON CREEK
F.A. RTE. 4025
SECTION 09-00071-00-BR
COOK COUNTY
STATION 30+67.04
STRUCTURE No. 016-7618

DESIGNED	200
CHECKED	EXAMINED
DRAWN	PASSED
CHECKED	ENGINEER OF BRIDGE DESIGN
	ENGINEER OF BRIDGES AND STRUCTURES

SHEET NO. S-7 SHEETS	F.A. RTE.	SECTION	COUNTY	TOTAL SHEETS	SHEET NO.
	4025	09-00071-00-BR	COOK	31	19
CONTRACT NO. 63437			ILLINOIS FED. AID PROJECT		