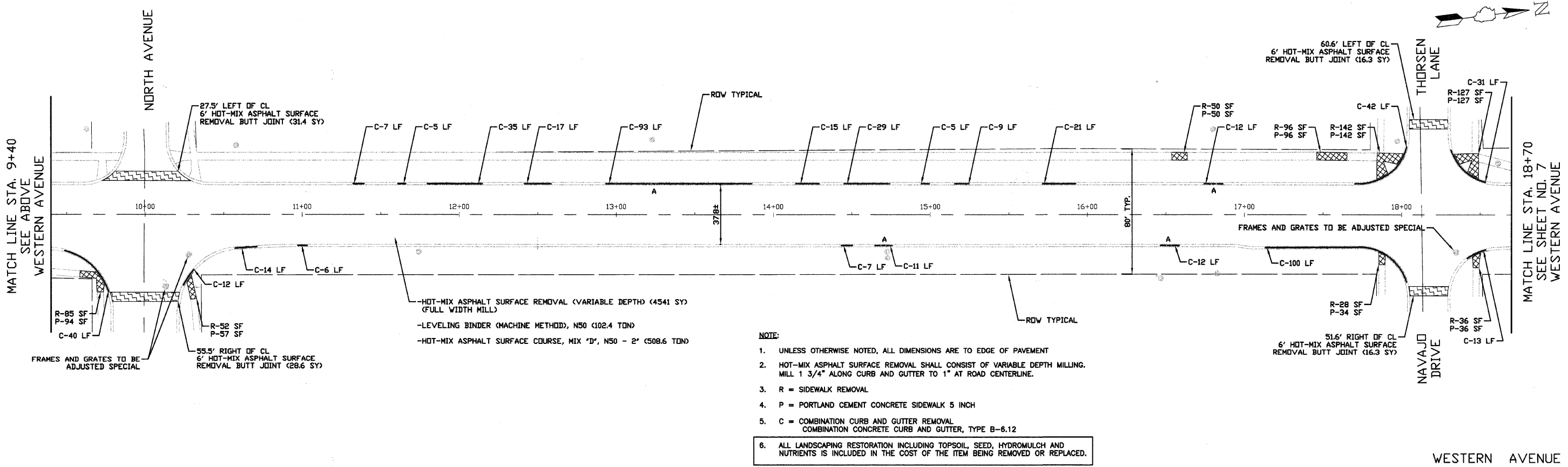


WESTERN AVENUE



WESTERN AVENUE

- NOTE:
- UNLESS OTHERWISE NOTED, ALL DIMENSIONS ARE TO EDGE OF PAVEMENT
 - HOT-MIX ASPHALT SURFACE REMOVAL SHALL CONSIST OF VARIABLE DEPTH MILLING. MILL 1 3/4" ALONG CURB AND GUTTER TO 1" AT ROAD CENTERLINE.
 - R = SIDEWALK REMOVAL
 - P = PORTLAND CEMENT CONCRETE SIDEWALK 5 INCH
 - C = COMBINATION CURB AND GUTTER REMOVAL COMBINATION CONCRETE CURB AND GUTTER, TYPE B-6.12
 - ALL LANDSCAPING RESTORATION INCLUDING TOPSOIL, SEED, HYDROMULCH AND NUTRIENTS IS INCLUDED IN THE COST OF THE ITEM BEING REMOVED OR REPLACED.

FILE NAME =	USER NAME =	DESIGNED — KRY	REVISED — 4/5/2010 PER IDOT	STATE OF ILLINOIS DEPARTMENT OF TRANSPORTATION	WESTERN AVENUE LAPP PLAN SHEETS	F.A.U. RITE	SECTION	COUNTY	TOTAL SHEETS	SHEET NO.	
		DRAWN — KRY	REVISED — 4/17/2010 PER IDOT			2411	10-00076-00-RS	KANE	16	5	
	PLOT SCALE = 1:30	CHECKED — NAB	REVISED —			CONTRACT NO. 63476					
	PLOT DATE = 5/26/2010	DATE — 4/7/2010	REVISED —			ILLINOIS FED. AID PROJECT					
				SCALE: 1:30		SHEET NO. 06 OF 16 SHEETS		STA. 0+58		TO STA. 18+70	