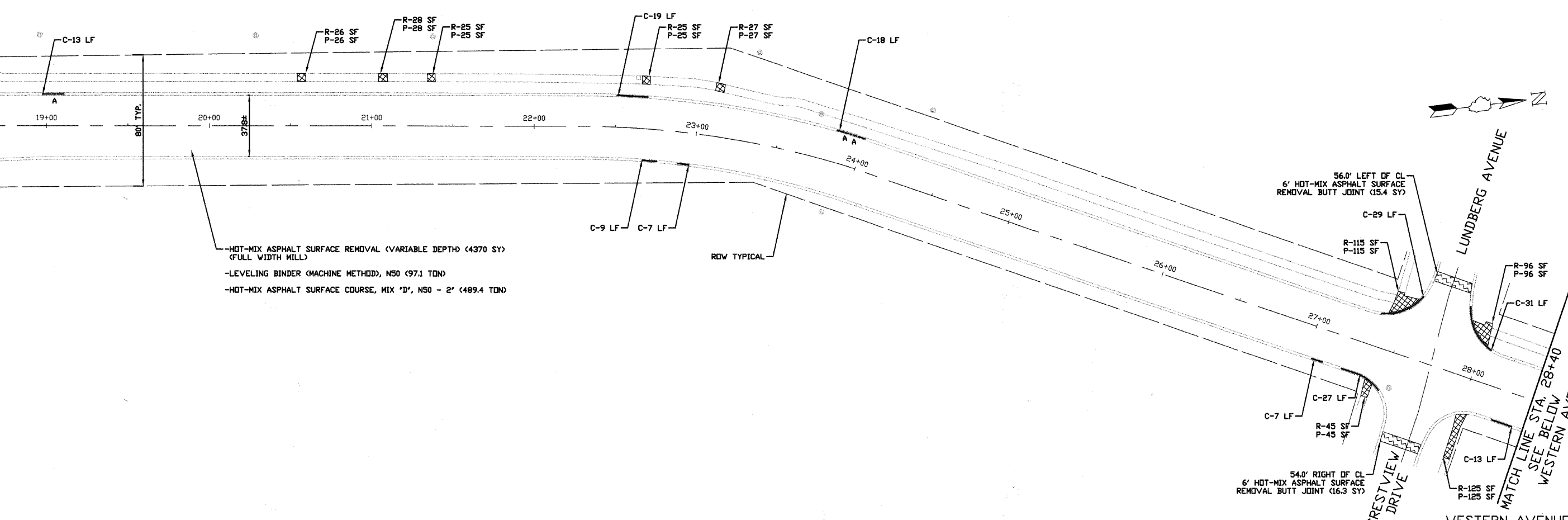
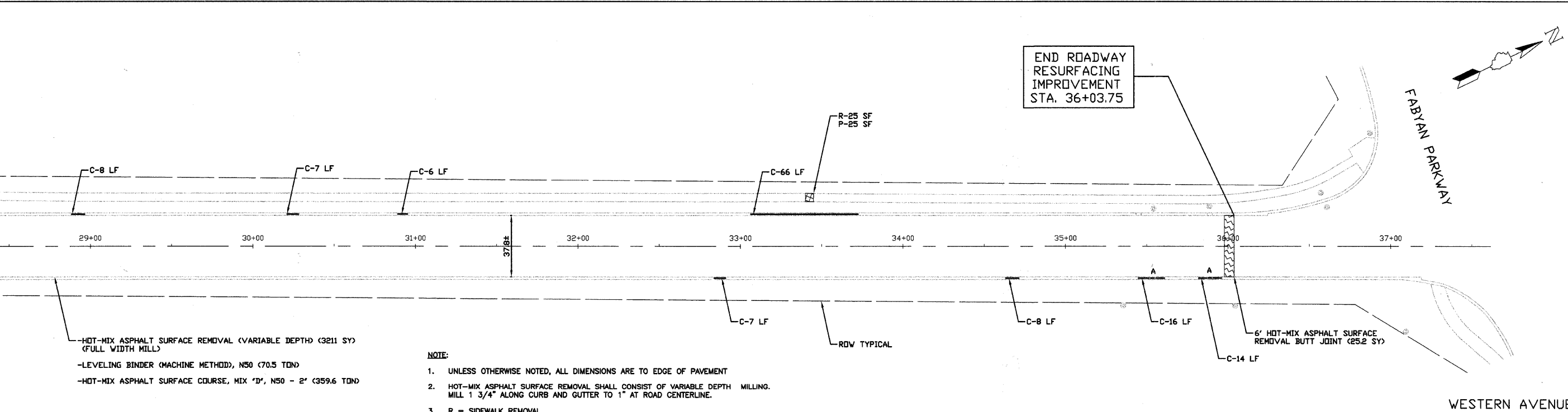


MATCH LINE STA. 18+70
SEE SHEET 6
WESTERN AVENUE



MATCH LINE STA. 28+40
SEE ABOVE
WESTERN AVENUE



- NOTE:**
- UNLESS OTHERWISE NOTED, ALL DIMENSIONS ARE TO EDGE OF PAVEMENT
 - HOT-MIX ASPHALT SURFACE REMOVAL SHALL CONSIST OF VARIABLE DEPTH MILLING. MILL 1 3/4" ALONG CURB AND GUTTER TO 1" AT ROAD CENTERLINE.
 - R = SIDEWALK REMOVAL
 - P = PORTLAND CEMENT CONCRETE SIDEWALK 5 INCH
 - C = COMBINATION CURB AND GUTTER REMOVAL COMBINATION CONCRETE CURB AND GUTTER, TYPE B-6.12
 - ALL LANDSCAPING RESTORATION INCLUDING TOPSOIL, SEED, HYDROMULCH AND NUTRIENTS IS INCLUDED IN THE COST OF THE ITEM BEING REMOVED OR REPLACED.

FILE NAME =	USER NAME =	DESIGNED -- KRY	REVISED -- 4/5/2010 PER IDOT	STATE OF ILLINOIS DEPARTMENT OF TRANSPORTATION	WESTERN AVENUE LAPP PLAN SHEETS		F.A.U. RTE.	SECTION	COUNTY	TOTAL SHEETS	SHEET NO.	
		DRAWN -- KRY	REVISED -- 4/17/2010 PER IDOT		2411	10-00076-00-RS	KANE	16	6			
		CHECKED -- NAB	REVISED --		SCALE: 1:30		SHEET NO. 7 OF 16 SHEETS		STA. 18+70 TO STA. 37+34.60		CONTRACT NO. 63476	
		DATE -- 4/7/2010	REVISED --		ILLINOIS FED. AID PROJECT							