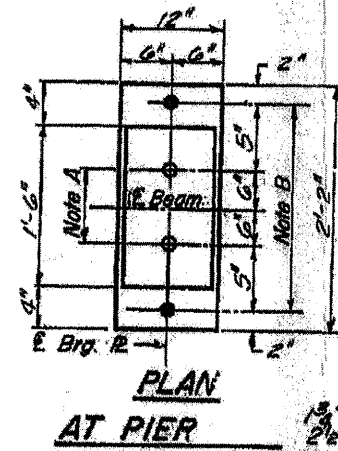
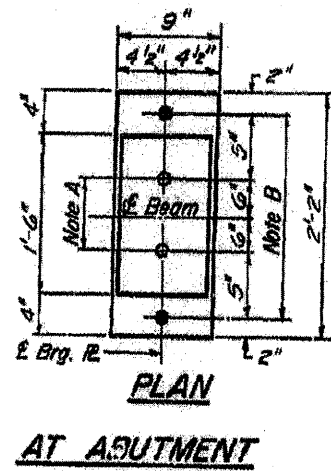
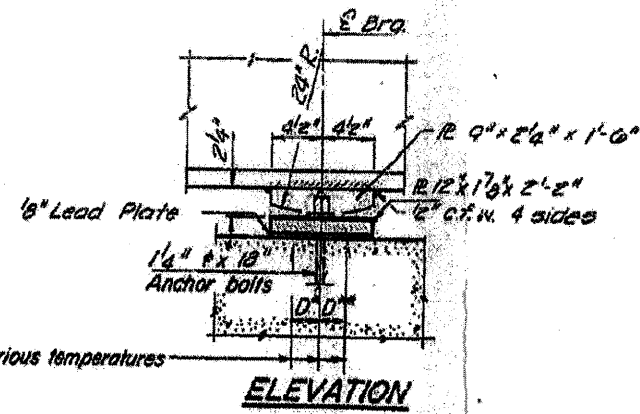
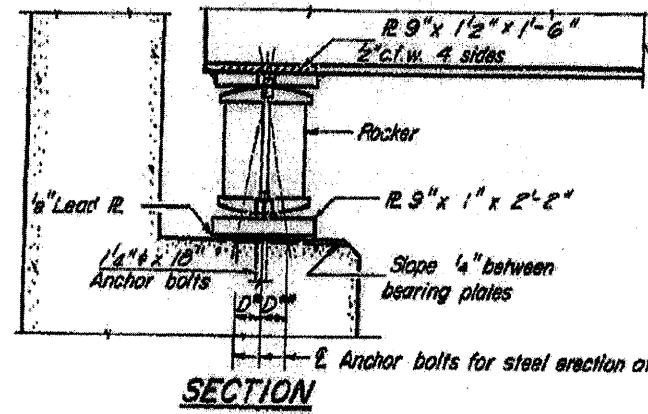
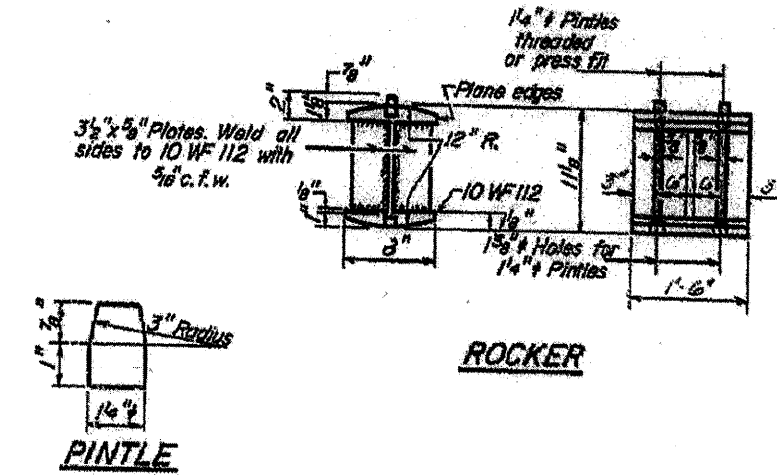


Location 1 S.N. 090-0101 Bearings Information only



NOTE B
 1 1/2" holes for 1 1/4" anchor bolts.
 2 1/2" x 2 1/2" x 5/16" R. Washers under nut.

BEARING ASSEMBLY DETAILS



FILE NAME =	USER NAME = enl1stj	DESIGNED -	REVISED -
Copy of 68390.dgn		DRAWN -	REVISED -
	PLOT SCALE = 105.7264' / IN.	CHECKED -	REVISED -
	PLOT DATE = 4/14/2010	DATE -	REVISED -

**STATE OF ILLINOIS
 DEPARTMENT OF TRANSPORTATION**

SCALE:	SHEET NO. OF SHEETS	STA. TO STA.
--------	---------------------	--------------

F.A. RTE.	SECTION	COUNTY	TOTAL SHEETS	SHEET NO.
1-100-10	(1108-10-1490-10)2,3,4,11-1	Tazewell	15	8
CONTRACT NO. 68991			ILLINOIS FED. AID PROJECT	