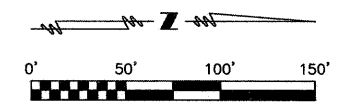
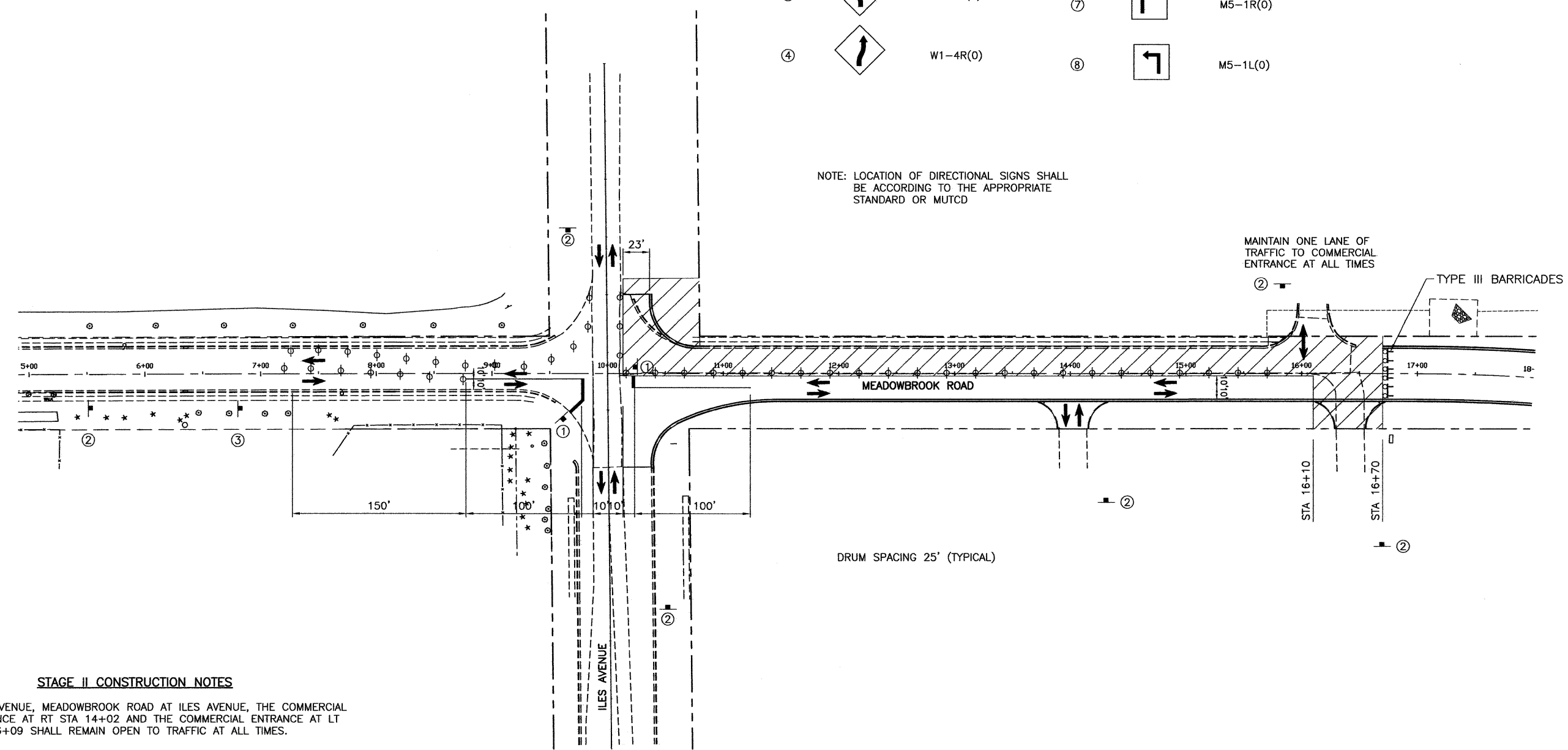


SIGNS

①		R1-1	⑤		W20-3(0)-48
②		W20-1103(0)	⑥		R11-2
③		W1-4L(0)	⑦		M5-1R(0)
④		W1-4R(0)	⑧		M5-1L(0)



NOTE: LOCATION OF DIRECTIONAL SIGNS SHALL BE ACCORDING TO THE APPROPRIATE STANDARD OR MUTCD



STAGE II CONSTRUCTION NOTES

1. ILES AVENUE, MEADOWBROOK ROAD AT ILES AVENUE, THE COMMERCIAL ENTRANCE AT RT STA 14+02 AND THE COMMERCIAL ENTRANCE AT LT STA 16+09 SHALL REMAIN OPEN TO TRAFFIC AT ALL TIMES.
2. COORDINATE WITH UTILITY COMPANIES FOR ANY ADJUSTMENTS OR RELOCATIONS PRIOR TO CONSTRUCTION.
3. CONSTRUCT STORM SEWER, CURB AND GUTTER, COMMERCIAL ENTRANCES AT LT STA 16+09 AND RT STA 16+42, CURB AND GUTTER AND 24 FEET OF PAVEMENT BETWEEN EXISTING WEST CURB AND NEW PAVEMENT CONSTRUCTED IN STAGE I FROM STA 10+14 TO STA 16+70.
4. FROM STA 10+14 TO STA 10+81.14 THE PAVEMENT SHALL BE HOT-MIX ASPHALT PAVEMENT (FULL-DEPTH), 10" ON SUB-BASE GRANULAR MATERIAL, TYPE A, 12". FROM STA 10+81.14 TO STA 16+70 THE PAVEMENT SHALL BE HOT-MIX ASPHALT PAVEMENT (FULL-DEPTH) 8½" ON LIME MODIFIED SOIL MIXTURE 12".
5. ALL IMPROVEMENTS TO MEADOWBROOK ROAD AND ILES AVENUE DURING THIS STAGE SHALL BE COMPLETED USING THE APPROPRIATE TRAFFIC CONTROL AND PROTECTION STANDARDS.

LEGEND

- WORK ZONE
- DRUM OR BARRICADE WITH STEADY BURN LIGHT
- TYPE III BARRICADE WITH 2 FLASHING LIGHTS
- TRAFFIC FLOW
- TRAFFIC CONTROL SIGN (NUMBER INDICATES SIGN TYPE SHOWN ABOVE)

SHEET TITLE		STAGE II CONSTRUCTION AND TRAFFIC CONTROL PLAN	
PROJECT	FAU RTE. 8046(MEADOWBROOK ROAD)	PROJECT NO.	09040
	SECTION 09-00465-00-PV	SCALE	1"=50'
	CITY OF SPRINGFIELD	DATE	4/19/10
	SANGAMON COUNTY	DRAWN BY	
Coombe-Bloxdorf P.C. -CIVIL ENGINEERS- -STRUCTURAL ENGINEERS- -LAND SURVEYORS- Phone: 217/544-8477 Design Firm License No. 184-002703 755 South Grand Ave. W. Springfield, IL 62704		CHECKED BY	
		DRAWING NO.	14
		OF 30_SHTS	