

STATE OF ILLINOIS
DEPARTMENT OF TRANSPORTATION

F.A.P. RTE.	SECTION	COUNTY	TOTAL SHEETS	SHEET NO.
741	(12Z)TS-1	MACON	5	1
		ILLINOIS	CONTRACT NO. 74A15	

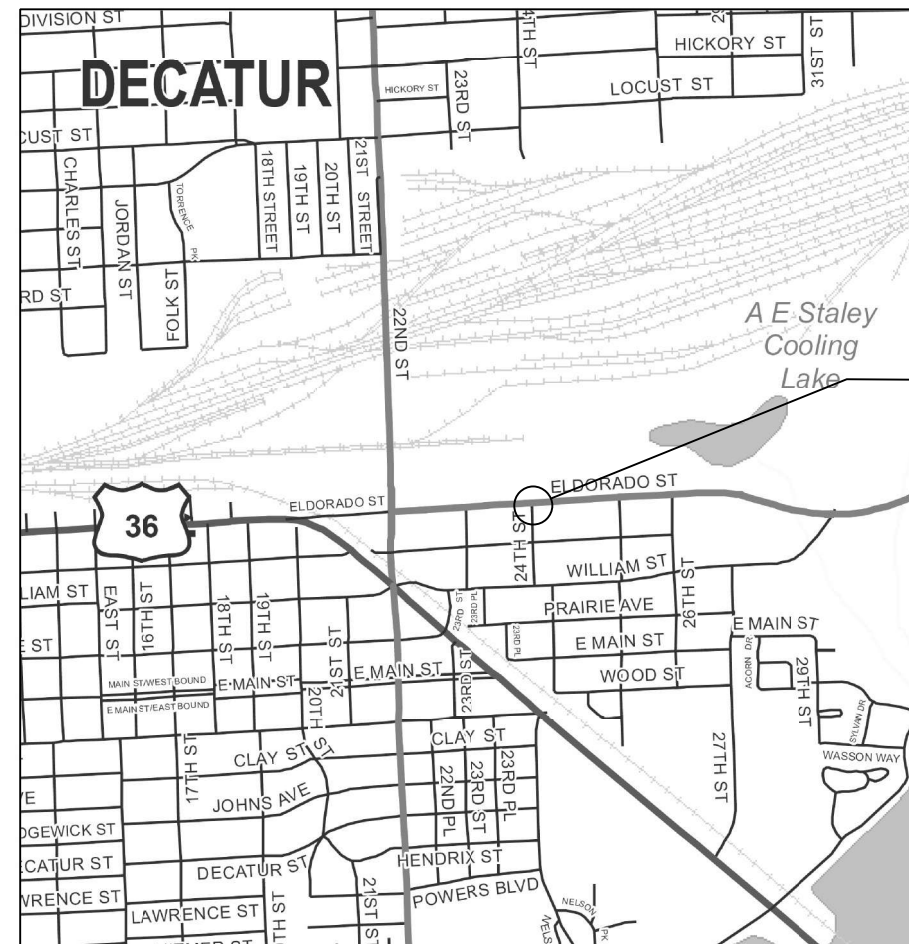
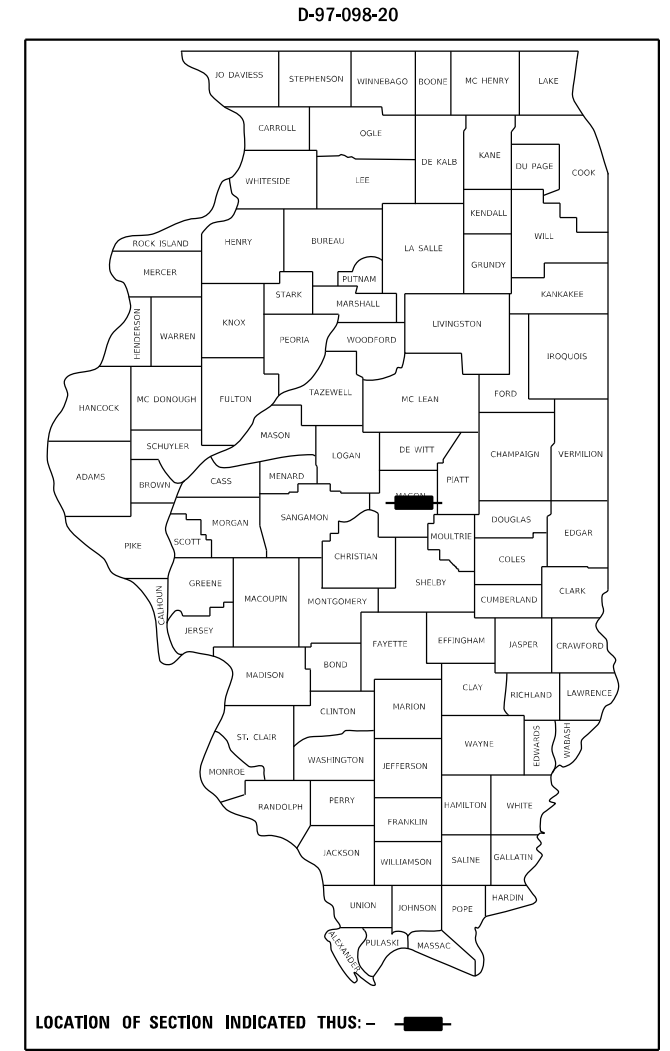
FOR INDEX OF SHEETS, SEE SHEET NO. 2

AADT (2019) = 7900

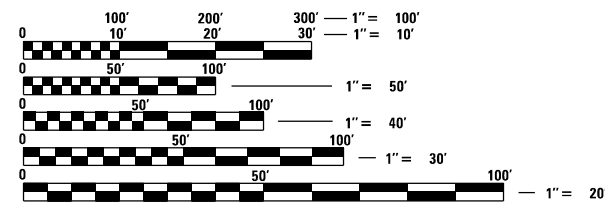
PROPOSED HIGHWAY PLANS

FAP ROUTE 741 (IL 105)
SECTION (12Z)TS-1
PROJECT STP-LTH6(180)
SIGNAL MODERNIZATION
MACON COUNTY

C-97-104-20



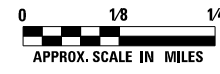
PROPOSED SIGNAL
MODIFICATION



FULL SIZE PLANS HAVE BEEN PREPARED USING STANDARD ENGINEERING SCALES. REDUCED SIZED PLANS WILL NOT CONFORM TO STANDARD SCALES. IN MAKING MEASUREMENTS ON REDUCED PLANS, THE ABOVE SCALES MAY BE USED.

J.U.L.I.E.
JOINT UTILITY LOCATION INFORMATION FOR EXCAVATORS
1-800-892-0123
OR 811

PROJECT ENGINEER: DEBRA G. BARRETT
PROJECT MANAGER: DEBRA G. BARRETT
PHONE: (217) 342-8243
CONTRACT NO. 74A15



STATE OF ILLINOIS
DEPARTMENT OF TRANSPORTATION

SUBMITTED December 9, 2020

Jeff P. Myer
REGIONAL ENGINEER

June 25, 2021
Joe A. Etk
ENGINEER OF DESIGN AND ENVIRONMENT

June 25, 2021
James J. ...
DIRECTOR OF HIGHWAYS PROJECT IMPLEMENTATION

PRINTED BY THE AUTHORITY
OF THE STATE OF ILLINOIS

GENERAL NOTES

THIS PROJECT CONSISTS OF TRAFFIC SIGNAL MODIFICATIONS AT ONE INTERSECTION LOCATED AT IL 105 AND 24TH STREET IN THE CITY OF DECATUR, MACON COUNTY. THE WORK INCLUDED IN THIS SECTION CONSISTS OF INSTALLING VIDEO DETECTION, DETECTION WIRING, AND ALL OTHER WORK NECESSARY TO COMPLETE THIS PROJECT.

THE CONTRACTOR SHALL VERIFY THE EXACT LOCATION OF ALL UNDERGROUND UTILITIES PRIOR TO BEGINNING CONSTRUCTION. CALL J.U.L.I.E. AT 1-800-892-0123.

THE TRAFFIC SIGNAL ENGINEER AT THE ILLINOIS DEPARTMENT OF TRANSPORTATION SHALL BE NOTIFIED AT 217-342-8291 AT LEAST 72 HOURS PRIOR TO TURNING ON ANY FLASHER OR CONTROLLER UNIT.

THE SIZE OF THE CABLE SUPPLIED SHALL BE EQUAL TO OR GREATER THAN THE SIZE OF THE CABLE REQUIRED TO CARRY THE LOAD BETWEEN THE CONTROLLER AND THE SERVICE INSTALLATION.

ALL HARDWARE SHALL BE TIGHTENED AND WELL SECURED. CABLES SHALL BE NEATLY WOUND IN HANDHOLES. CABLES SHALL BE NEATLY TRAINED IN THE CONTROLLER CABINET.

ALL THREADS OF BOLTS USED IN ASSEMBLY OF TRAFFIC SIGNAL COMPONENTS SHALL BE COATED WITH A NON-LEAD BASED ANTI-SEIZE COMPOUND, SIMILAR TO LEAD PLATE, PRIOR TO ASSEMBLY.

NO ADDITIONAL COMPENSATION WILL BE ALLOWED FOR PLACING CONDUIT AT GREATER THAN 2 FOOT MINIMUM DEPTH TO AVOID OBSTACLES SUCH AS UNDERGROUND UTILITIES.

THE CONTRACTOR IS RESPONSIBLE FOR UNCOVERING OR HAND DIGGING AROUND UTILITIES AS NECESSARY. THE COST OF THIS WORK IS TO BE INCLUDED WITH THE ELECTRICAL WORK PAY ITEM.

THE NUMBER OF CONDUCTORS FOR ELECTRIC CABLES AS SHOWN ON THE PLANS SHALL BE THE MINIMUM NUMBER OF CONDUCTORS FURNISHED FOR EACH LOCATION. THE CONTRACTOR MAY SUBSTITUTE AN ELECTRIC CABLE WITH MORE CONDUCTORS THAN SPECIFIED, BUT NO ADDITIONAL COMPENSATION WILL BE MADE FOR THE EXTRA CONDUCTORS.

ALL NEW TRAFFIC SIGNAL WIRING SHALL EXTEND FROM CONTROLLER TO SIGNAL. SPLICES IN HANDHOLES WILL NOT BE ALLOWED.

ALL MAST ARM MOUNTED SIGNAL HEADS ON AN INDIVIDUAL MAST ARM SHALL BE MOUNTED SO THAT THE RED INDICATIONS ARE LEVEL WITH EACH OTHER.

ALL MAST ARM MOUNTED SIGNAL HEADS SHALL BE MOUNTED AS TO ALIGN WITH THE CENTER OF THE LANE.

TRAFFIC SIGNAL HEADS SHALL BE PROPERLY COVERED PRIOR TO INTERSECTION TURN-ON OR AS DIRECTED BY THE ENGINEER. THIS COST SHALL BE INCLUDED WITH THE COST OF THE ASSOCIATED SIGNAL HEAD PAY ITEMS.

INDEX OF SHEETS

SHEET NO.	ITEM
1	COVER SHEET
2	GENERAL NOTES, INDEX OF SHEETS & LIST OF STANDARDS
3	SUMMARY OF QUANTITIES
4	SIGNAL DETAILS
5	SIGNAL LAYOUT

THE FOLLOWING STANDARDS ARE A PART OF THESE PLANS AND ARE INCLUDED FOLLOWING THE LAST NUMBERED SHEET OF THE PLANS.

000001-08	STANDARD SYMBOLS, ABBREVIATIONS AND PATTERNS
001006	DECIMAL OF AN INCH AND OF A FOOT
701101-05	OFF-ROAD OPERATIONS, MULTILANE, 15' (4.5 m) TO 24" (600 mm) FROM PAVEMENT EDGE
701106-02	OFF-ROAD OPERATIONS, MULTILANE, MORE THAN 15' (4.5 m) AWAY
701427-05	LANE CLOSURE, MULTILANE, INTERMITTENT OR MOVING OPERATIONS. FOR SPEEDS <= 40 MPH
701701-10	URBAN LANE CLOSURE, MULTILANE INTERSECTION
701801-06	SIDEWALK, CORNER OR CROSSWALK CLOSURE
701901-08	TRAFFIC CONTROL DEVICES
720001-01	SIGN PANEL MOUNTING DETAILS
873001-02	TRAFFIC SIGNAL GROUNDING & BONDING
880006-01	TRAFFIC SIGNAL MOUNTING DETAILS

MODEL NUMBER: MAMES
FILE NAME: 811215

USER NAME = SUSERS	DESIGNED -	REVISED -	STATE OF ILLINOIS DEPARTMENT OF TRANSPORTATION	GENERAL NOTES, INDEX OF SHEETS & LIST OF STANDARDS		F.A.P. RTE.	SECTION	COUNTY	TOTAL SHEETS	SHEET NO.
PLOT SCALE = SCALES	DRAWN -	REVISED -				741	(122)TS-1	MACON	5	2
PLOT DATE = SDATES	CHECKED -	REVISED -		SCALE: SHEET 1 OF 1 SHEETS STA. TO STA.		CONTRACT NO. 74A15				
	DATE -	REVISED -		ILLINOIS FED. AID PROJECT						

80% FED
20% STATE
URBAN

80% FED
20% STATE
URBAN

SUMMARY OF QUANTITIES			TOTAL QUANTITIES	CONSTRUCTION TYPE CODE		
CODE NO	ITEM	UNIT		0021		
67100100	MOBILIZATION	L SUM	1	1		
70102635	TRAFFIC CONTROL AND PROTECTION, STANDARD 701701	L SUM	1	1		
70102640	TRAFFIC CONTROL AND PROTECTION, STANDARD 701801	L SUM	1	1		
70107025	CHANGEABLE MESSAGE SIGN	CAL DA	28	28		
* 72000100	SIGN PANEL - TYPE 1	SO FT	7.5	7.5		
87301255	ELECTRIC CABLE IN CONDUIT, SIGNAL NO. 14	70 FOOT	353	353		
87301305	ELECTRIC CABLE IN CONDUIT, LEAD-IN, NO. 14 1 PAIR	FOOT	123	123		
88040150	SIGNAL HEAD, POLYCARBONATE, LED, 1-FACE, 5-SECTION, BRACKET MOUNTED	EACH	1	1		
88040160	SIGNAL HEAD, POLYCARBONATE, LED, 1-FACE, 5-SECTION, MAST ARM MOUNTED	EACH	1	1		
88200410	TRAFFIC SIGNAL BACKPLATE, LOUVERED, FORMED PLASTIC	EACH	2	2		

SUMMARY OF QUANTITIES			TOTAL QUANTITIES	CONSTRUCTION TYPE CODE		
CODE NO	ITEM	UNIT		0021		
Z0033072	VIDEO VEHICLE DETECTION SYSTEM	EACH	1	1		

* SPECIALTY ITEM

REV. - MS

MODEL: Default
 FILE: MacE: p:\gibsonroom.dwg
 PROJECT: 74A15\CAD\Drawings\DOT Office\District 7\Project\74A15\CAD\Drawings\DOT Office\District 7\Project\74A15-sh-500.dwg

USER NAME = steffemk	DESIGNED -	REVISED -
	DRAWN -	REVISED -
PLOT SCALE = 100.0000' / in.	CHECKED -	REVISED -
PLOT DATE = 12/9/2020	DATE -	REVISED -

STATE OF ILLINOIS
DEPARTMENT OF TRANSPORTATION

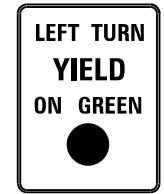
SUMMARY OF QUANTITIES

SCALE: SHEET 1 OF 1 SHEETS STA. TO STA.

F.A.P. RTE.	SECTION	COUNTY	TOTAL SHEETS	SHEET NO.
741	(122)TS-1	MACON	5	3
			CONTRACT NO. 74A15	
ILLINOIS FED. AID PROJECT				

LEGEND

	Existing	Proposed
SIGNAL POST		
MAST ARM		
SIGNAL HEAD W/ BACKPLATE		
PEDESTRIAN HEAD		
CONTROLLER		
HANDHOLE		
GULFBOX JUNCTION		
DOUBLE HANDHOLE		
DETECTOR LOOP		
TRAFFIC SIGNAL HEAD		
VIDEO DETECTION CAMERA		



30"x36"

Black on White
MUTCD SIGN DESIGNATION R10-12

TO INSTALLED ON EB MA (STA 63+86, 27' RT)

MODEL NAME: MAMES
FILE NAME: 811115

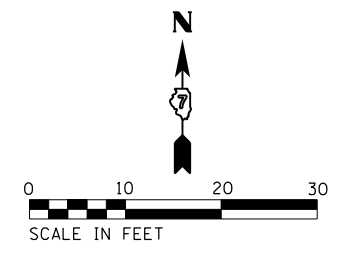
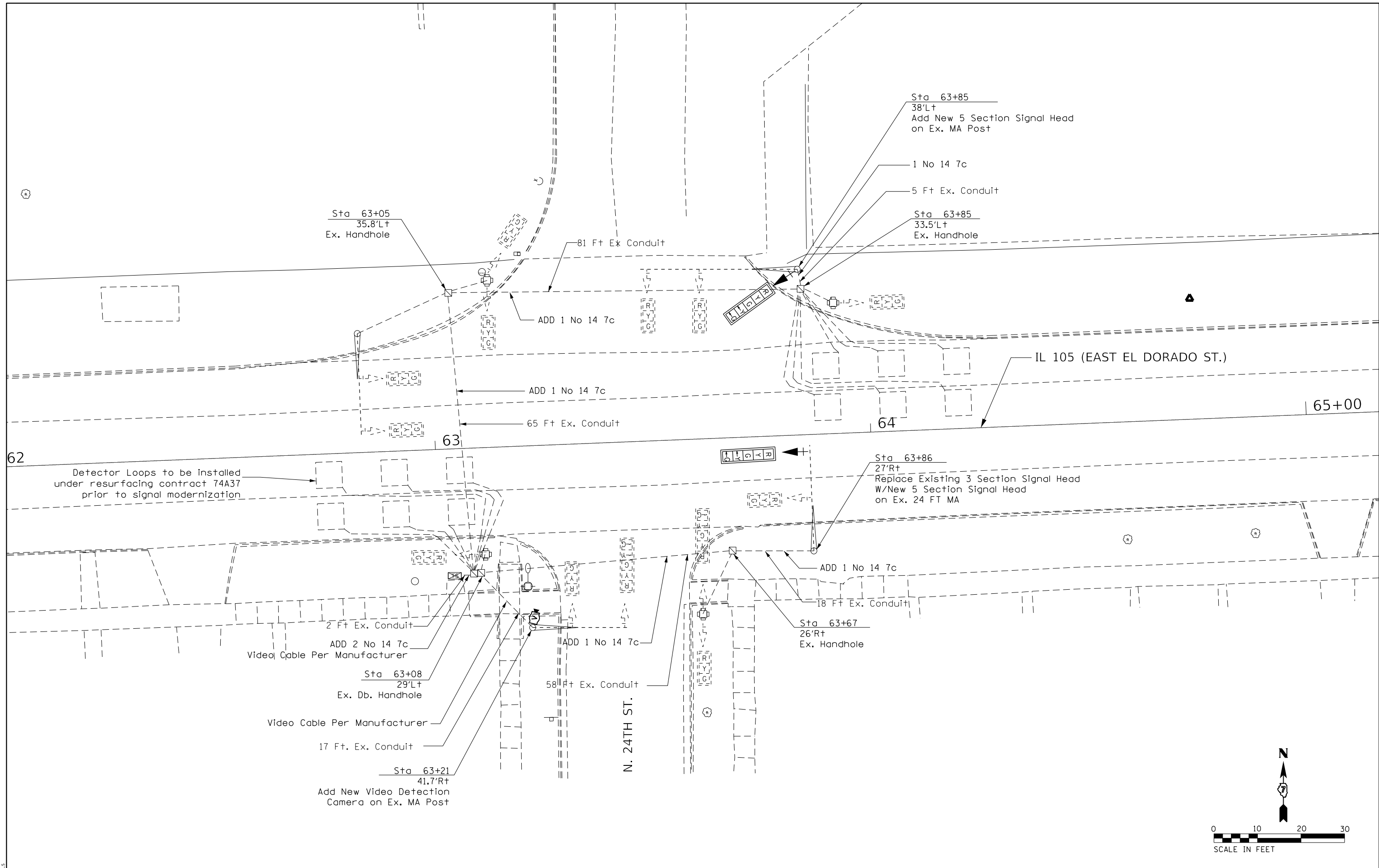
USER NAME = SUSERS	DESIGNED -	REVISED -
	DRAWN -	REVISED -
PLOT SCALE = 5SCALES	CHECKED -	REVISED -
PLOT DATE = SDATES	DATE -	REVISED -

**STATE OF ILLINOIS
DEPARTMENT OF TRANSPORTATION**

SIGNAL DETAILS

SCALE: SHEET 1 OF 1 SHEETS STA. TO STA.

F.A.P. RTE.	SECTION	COUNTY	TOTAL SHEETS	SHEET NO.
741	(122)TS-1	MACON	5	4
CONTRACT NO. 74A15			ILLINOIS FED. AID PROJECT	



MODEL NUMBER: MAMES
FILE NAME: 811E15

USER NAME = SUSERS	DESIGNED -	REVISED -
PLOT SCALE = 5SCALES	DRAWN -	REVISED -
PLOT DATE = SDATES	CHECKED -	REVISED -
	DATE -	REVISED -

**STATE OF ILLINOIS
DEPARTMENT OF TRANSPORTATION**

SIGNAL LAYOUT IL 105 & 24TH STREET			
SCALE:	SHEET 1	OF 1	SHEETS
	STA.		TO STA.

F.A.P. RTE.	SECTION	COUNTY	TOTAL SHEETS	SHEET NO.
741	(122)TS-1	MACON	5	5
CONTRACT NO. 74A15				
ILLINOIS FED. AID PROJECT				