

STATE OF ILLINOIS
DEPARTMENT OF TRANSPORTATION

F.A. RTE.	SECTION	COUNTY	TOTAL SHEETS	SHEET NO.
	DIST 8 GUARDRAIL 2022-1	VARIOUS	12	1
		ILLINOIS	CONTRACT NO. 76P14	

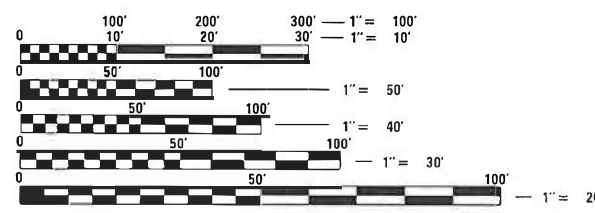
FOR INDEX OF SHEETS, SEE SHEET NO. 2

PROPOSED HIGHWAY PLANS

VARIOUS ROUTES
SECTION DIST 8 GUARDRAIL 2022-1
PROJECT COVD-7LR2(358)
GUARDRAIL & CABLE MEDIAN REPAIR
VARIOUS COUNTIES
C-98-048-21



NOT TO SCALE



FULL SIZE PLANS HAVE BEEN PREPARED USING STANDARD ENGINEERING SCALES. REDUCED SIZED PLANS WILL NOT CONFORM TO STANDARD SCALES. IN MAKING MEASUREMENTS ON REDUCED PLANS, THE ABOVE SCALES MAY BE USED.

J.U.L.I.E.
JOINT UTILITY LOCATION INFORMATION FOR EXCAVATORS
1-800-892-0123
OR 811

PROJECT ENGINEER: CHERYL KEPLAR (618) 346-3123
SQUAD CONTACT: TONI MANN (618) 346-3189

CONTRACT NO. 76P14

STATE OF ILLINOIS
DEPARTMENT OF TRANSPORTATION

SUBMITTED *May 7, 2021*
Keith Robertson
REGIONAL ENGINEER

June 25, 2021
Scott A. Elk
ENGINEER OF DESIGN AND ENVIRONMENT

June 25, 2021
James J. Gu
DIRECTOR OF HIGHWAYS PROJECT IMPLEMENTATION '13

PRINTED BY THE AUTHORITY
OF THE STATE OF ILLINOIS

INDEX OF SHEETS

- 1. COVER SHEET
- 2. INDEX OF SHEETS, HIGHWAY STANDARDS, GENERAL NOTES, AND COMMITMENTS
- 3.-5. SUMMARY OF QUANTITIES
- 6. HIGH TENSION CABLE LOCATION MAP
- 7.-12. GUARDRAIL DETAILS

HIGHWAY STANDARDS

001006	
000001-08	701201-05
630001-12	701301-04
630101-10	701400-10
630106-02	701406-12
630301-09	701421-08
631011-10	701426-09
631026-06	701428-01
631031-17	701456-05
635001-02	701501-06
636001-02	701502-09
643001-02	701601-09
701001-02	701602-10
701006-05	701606-10
701011-04	701701-10
701101-05	701901-08
701106-02	782006-01

GENERAL NOTES

- 1. BEFORE ORDERING THE IMPACT ATTENUATORS, THE CONTRACTOR MUST CONTACT THE OPERATIONS FIELD ENGINEER AT (618) 346-3279 OR (618) 346-3233 TO RECEIVE APPROVAL OF THE PROPOSED INSTALLATION.
- 2. ALL WORK IS TO BE REPLACED IN KIND OR AS INDICATED ON THE CONTRACT PLANS AND PROVISIONS.
- 3. NO MATERIAL SHALL BE LEFT ON OR NEAR THE ROADWAY DURING NON-WORKING HOURS.
- 4. ANY NECESSARY TRAFFIC CONTROL WILL BE PROVIDED BY THE CONTRACTOR; APPROPRIATE STANDARDS ARE LISTED IN THE PLANS AND CONTRACT DOCUMENTS.
- 5. ALL REFLECTORS SHALL BE PLACED AT THE DISCRETION OF THE ENGINEER. COST OF REFLECTORS TO BE INCLUDED IN THE GUARDRAIL PAY ITEMS.
- 6. ILLINOIS STATE LAW REQUIRES A 48-HOUR NOTICE TO BE GIVEN TO UTILITIES BEFORE DIGGING. FIELD MARKING OF FACILITIES MAY BE OBTAINED BY CONTACTING J.U.L.I.E. (PHONE 800-892-0123) OR FOR NON-MEMBERS, THE UTILITY COMPANY DIRECTLY.
- 7. WHEN NO WORK IS BEING PERFORMED, THE FLAGGERS WILL NOT BE REQUIRED. IF THE FLAGGERS ARE NOT PRESENT, THE FLAGGER SIGNS SHALL BE REMOVED OR COVERED.
- 8. PRIOR TO ORDERING ANY MATERIALS, THE CONTRACTOR SHALL CONFIRM THE TYPES AND SPECIFIC MANUFACTURER FOR THE GUARDRAIL AND CABLE REPAIRS REQUIRED.
- 9. 45 AND 55 MPH SIGNS ARE INCLUDED IN ALL INTERSTATE LANE CLOSURES. IF THE LANE CLOSURE DURATION IS LESS THAN 4 HOURS, THE 45 AND 55 MPH SIGNS ARE NOT REQUIRED.
- 10. NO OVERNIGHT LANE CLOSURES WILL BE ALLOWED.
- 11. ARTICLE 701.20 OF THE STANDARD SPECIFICATIONS DISCUSSES AN ADJUSTED UNIT PRICE. NO ADJUSTMENTS SHALL BE MADE TO THE TRAFFIC CONTROL PAY ITEMS FOR THIS CONTRACT.
- 12. THE CONTRACTOR SHALL BE ADVISED THAT THE GUARDRAIL PAY ITEMS INCLUDED IN THE PLANS MAY BE USED TO REPLACE/REPAIR SPBGR AND TRAFFIC BARRIER TERMINALS FOR EITHER THE CURRENT MIDWEST STYLES AS SHOWN IN THE HIGHWAY STANDARDS OR SPBGR AND TRAFFIC BARRIER TERMINALS INSTALLED PRIOR TO JANUARY 1, 2007 AS SHOWN IN THE PLAN DETAILS. NO ADDITIONAL COMPENSATION WILL BE ALLOWED FOR UTILIZING THE CURRENT MIDWEST STANDARDS.
- 13. THE DEPARTMENT STRONGLY ENCOURAGES THE PRIME CONTRACTOR AND THEIR SUB-CONTRACTORS TO HIRE MINORITY, WOMEN AND DISADVANTAGED INDIVIDUALS FROM ITS FEDERALLY FUNDED HIGHWAY CONSTRUCTION CAREERS TRAINING PROGRAM (HCCTP) TO HELP MEET WORKFORCE AND TRAINEE GOALS. THIS PROGRAM IS TRAINING MINORITIES, WOMEN AND DISADVANTAGED INDIVIDUALS IN HIGHWAY CONSTRUCTION-RELATED SKILLS, E.G., MATH FOR THE TRADES, JOB READINESS, TECHNICAL SKILLS COURSEWORK (CARPENTRY, CONCRETE FLATWORK, BLUEPRINT READING, SITE PLANS, SITE WORK, TOOLS USE, ETC.) AND OSHA 10 HOUR CERTIFICATION, TO PREPARE THEM FOR A CAREER IN THE HIGHWAY CONSTRUCTION TRADES. GRADUATES ARE WELL-TRAINED AND READY TO BECOME PRODUCTIVE ENTRY-LEVEL CONSTRUCTION WORKERS. CONTACT THE DISTRICT EEO OFFICE AT 618-346-3360 AND OR THE HCCTP COORDINATOR AT 618-874-6528 TO LEARN MORE ABOUT THE PROGRAM AND FOR ASSISTANCE IN MEETING WORKFORCE AND TRAINEE GOALS.

COMMITMENTS
NONE

REV. - MS

FILE NAME =	USER NAME = lewiska	DESIGNED -	REVISED -	STATE OF ILLINOIS DEPARTMENT OF TRANSPORTATION	INDEX OF SHEETS, HIGHWAY STANDARDS GENERAL NOTES AND COMMITMENTS	F.A. RTE.	SECTION	COUNTY	TOTAL SHEETS	SHEET NO.	
p:\planning\dot.illinois.gov\PIDOT\Documents\DOT Offices\District 8\Projects\0876P\Drawings\CAD\sheets\0876P14-sht-gennote.dgn		CHECKED -	REVISED -			VARIOUS	DIST 8 GUARDRAIL 2022-1		VARIOUS	12	2
Default	PLOT SCALE = 100.0000' / in.	DATE -	REVISED -			SCALE: NONE			SHEET 1 OF 1 SHEETS STA. TO STA.		
	PLOT DATE = 5/4/2021					(ILLINOIS) FED. AID PROJECT					

CODE NO.	ITEM	UNIT	TOTAL QUANTITY	CONSTRUCTION CODE			
				100% STATE	100% STATE	100% STATE	100% FEDERAL
				CONT. MAINT 0021	MCDF 0021	HTMCB 0021	COVID 0021
63000350	LONG-SPAN GUARDRAIL OVER CULVERT, 12 FT 6 IN SPAN	FOOT	237.5	162.5			75
63100045	TRAFFIC BARRIER TERMINAL, TYPE 2	EACH	22	4	2		16
63100070	TRAFFIC BARRIER TERMINAL, TYPE 5	EACH	7	4	1		2
63100085	TRAFFIC BARRIER TERMINAL, TYPE 6	EACH	11	8	1		2
63100167	TRAFFIC BARRIER TERMINAL, TYPE 1 (SPECIAL) TANGENT	EACH	133	65	18		50
63100169	TRAFFIC BARRIER TERMINAL, TYPE 1 (SPECIAL) FLARED	EACH	35	5	20		10
64300260	IMPACT ATTENUATORS (FULLY REDIRECTIVE, NARROW), TEST LEVEL 3	EACH	6	3	2		1
64300370	IMPACT ATTENUATORS (FULLY REDIRECTIVE, WIDE), TEST LEVEL 3	EACH	7	3	2		2
67100100	MOBILIZATION	L SUM	1	0.33	0.34	0.33	
X0325972	CABLE GUARD POST	EACH	515			340	175
X0326466	HIGH TENSION CABLE POST REPAIR	EACH	350			80	270
X0326468	MEDIAN CABLE	FOOT	323			300	23
X6300210	GUARDRAIL BLOCKS	EACH	1300	400	385		515
X6300215	RAIL ELEMENT PLATES	EACH	910	200	310		400

CODE NO.	ITEM	UNIT	TOTAL QUANTITY	CONSTRUCTION CODE			
				100% STATE	100% STATE	100% STATE	100% FEDERAL
				CONT. MAINT 0021	MCDF 0021	HTMCB 0021	COVID 0021
X6300217	RAIL ELEMENT PLATES (RADIUS)	EACH	62	25	25		12
X6300220	EXTRUDER HEAD	EACH	17	10	5		2
X6300225	SINGLE END SECTION	EACH	7	2	1		4
X6300231	STEEL POST, ATTACHED TO STRUCTURES	EACH	9	3	4		2
X6300236	STEEL POSTS 6'	EACH	995	300	325		370
X6300239	STEEL POSTS 9'	EACH	550	100	150		300
X6331110	STEEL POSTS, SPECIAL	EACH	14	10	2		2
X6430210	REMOVE AND REINSTALL IMPACT ATTENUATORS	EACH	85	20	65		
X7011834	TRAFFIC CONTROL AND PROTECTION, CALL OUT WORK	EACH	356	176	120		60
X7011836	TRAFFIC CONTROL AND PROTECTION, FREEWAY/EXPRESSWAY, CALL OUT WORK	EACH	495	175	100	100	120
X8030110	LOCATING UNDERGROUND CABLE, SPECIAL	EACH	7	5	2		
Z0029655	HIGH TENSION CABLE ROAD GUARDPOST	EACH	1325			825	500
Z0029657	HIGH TENSION CABLE SYSTEM MAINTENANCE	EACH	85			35	50
Z0029658	REPAIR TRAFFIC BARRIER TERMINAL TYPE 1 SPECIAL - POST	EACH	87	14	65		8

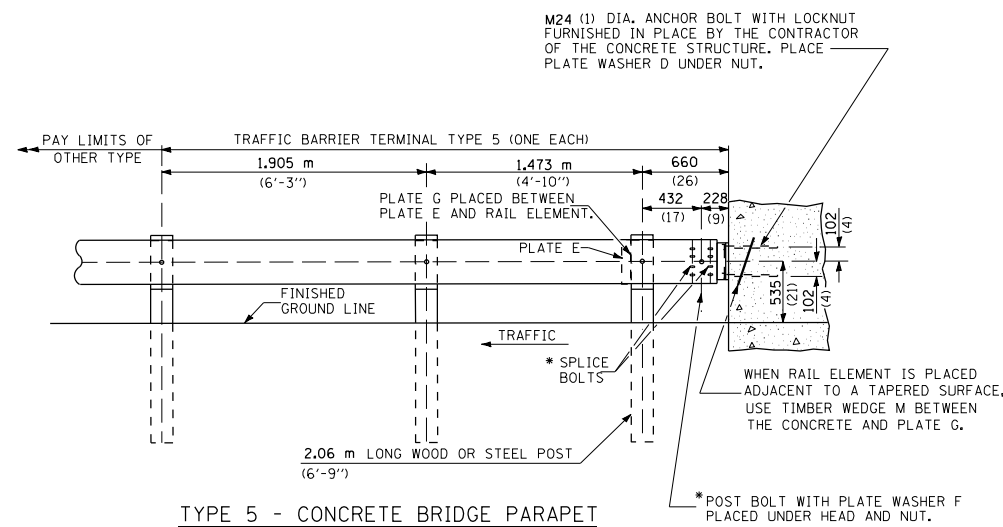
CODE NO.	ITEM	UNIT	TOTAL QUANTITY	CONSTRUCTION CODE			
				100% STATE	100% STATE	100% STATE	100% FEDERAL
				CONT. MAINT 0021	MCDF 0021	HTMCB 0021	COVID 0021
Z0029662	REPLACE HIGH TENSION CABLE GUARDPOST FOUNDATION	EACH	375			75	300
Z0052410	REPAIR TRAFFIC BARRIER TERMINAL, TYPE 1 SPECIAL (TANGENT)	EACH	92	44	40		8
Z0052415	REPAIR TRAFFIC BARRIER TERMINAL, TYPE 1 SPECIAL (FLARED)	EACH	14	10	2		2
Z0052600	REPAIR TRAFFIC BARRIER TERMINAL, TYPE 2	EACH	9	5	4		
Z0052800	REPAIR TRAFFIC BARRIER TERMINAL, TYPE 3A	EACH	9	5	2		2
Z0053000	REPAIR TRAFFIC BARRIER TERMINAL, TYPE 5	EACH	4	2	2		
Z0053200	REPAIR TRAFFIC BARRIER TERMINAL, TYPE 6	EACH	11	5	2		4
Z0059660	REPAIR TRAFFIC BARRIER TERMINAL TYPE 1 SPECIAL - RAIL ELEMENT PLATE	EACH	33	7	20		6



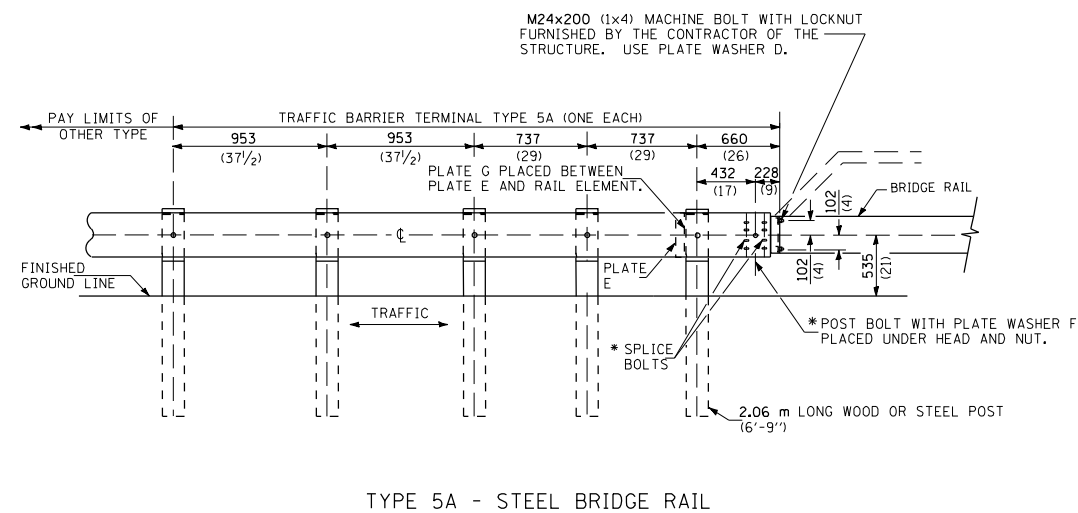
FOR INFORMATION ONLY.
 CONTRACTOR SHALL CONFIRM
 SYSTEM TYPE PRIOR TO
 ORDERING MATERIALS.

FILE NAME =	USER NAME = lewisko	DESIGNED -	REVISED -	STATE OF ILLINOIS DEPARTMENT OF TRANSPORTATION	HIGH TENSION CABLE LOCATION MAP			F.A. RTE.	SECTION	COUNTY	TOTAL SHEETS	SHEET NO.
pw:\plenroom.dot.illinois.gov\PIDOT\Documents\IDOT Offices\District 8\Projects\D876P14\Drawings\CADsheets\D876P14-sht-plen.dgn		CHECKED -	REVISED -		SCALE: NONE	SHEET 1	OF 1 SHEETS	STA.	DIST 8 GUARDRAIL 2022-1	VARIOUS	12	6
Default	PLOT SCALE = 100.0000' / in.	DATE -	REVISED -					TO STA.				
	PLOT DATE = 5/4/2021											

ILLINOIS FED. AID PROJECT



TYPE 5 - CONCRETE BRIDGE PARAPET



TYPE 5A - STEEL BRIDGE RAIL

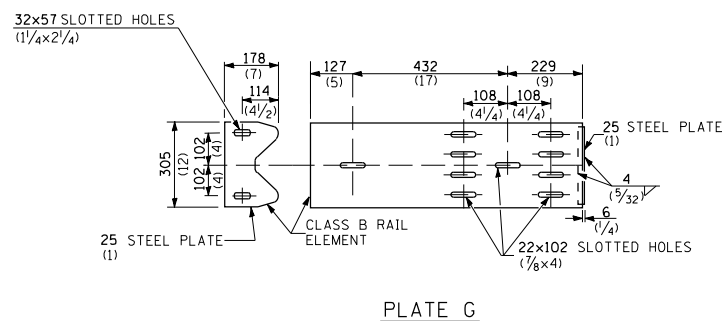


PLATE G

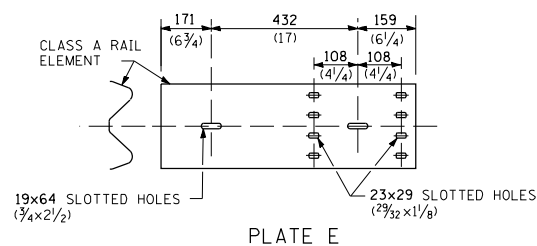
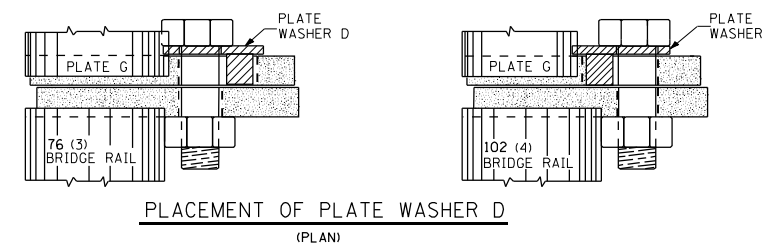


PLATE E



PLACEMENT OF PLATE WASHER D (PLAN)

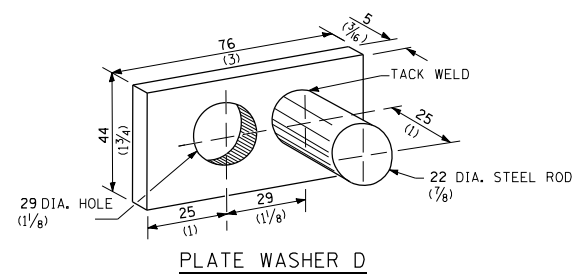
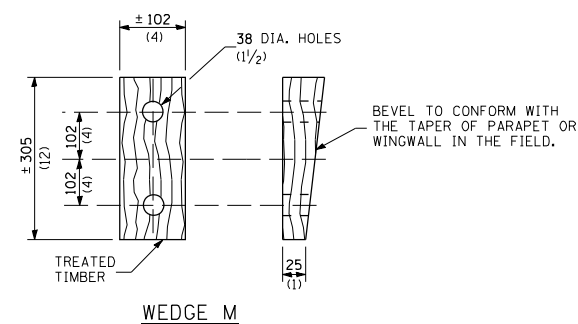


PLATE WASHER D



WEDGE M

GENERAL NOTES

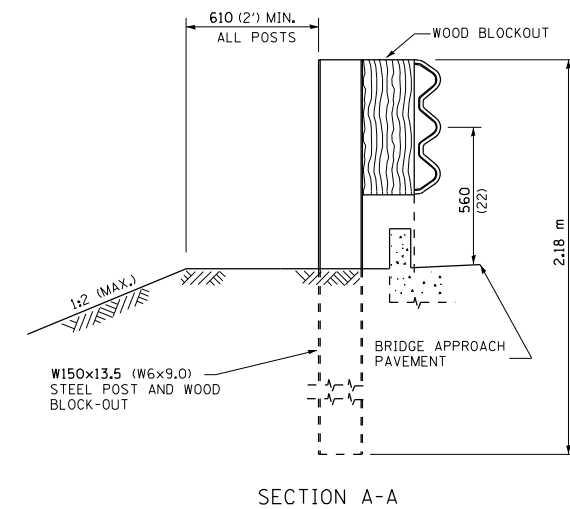
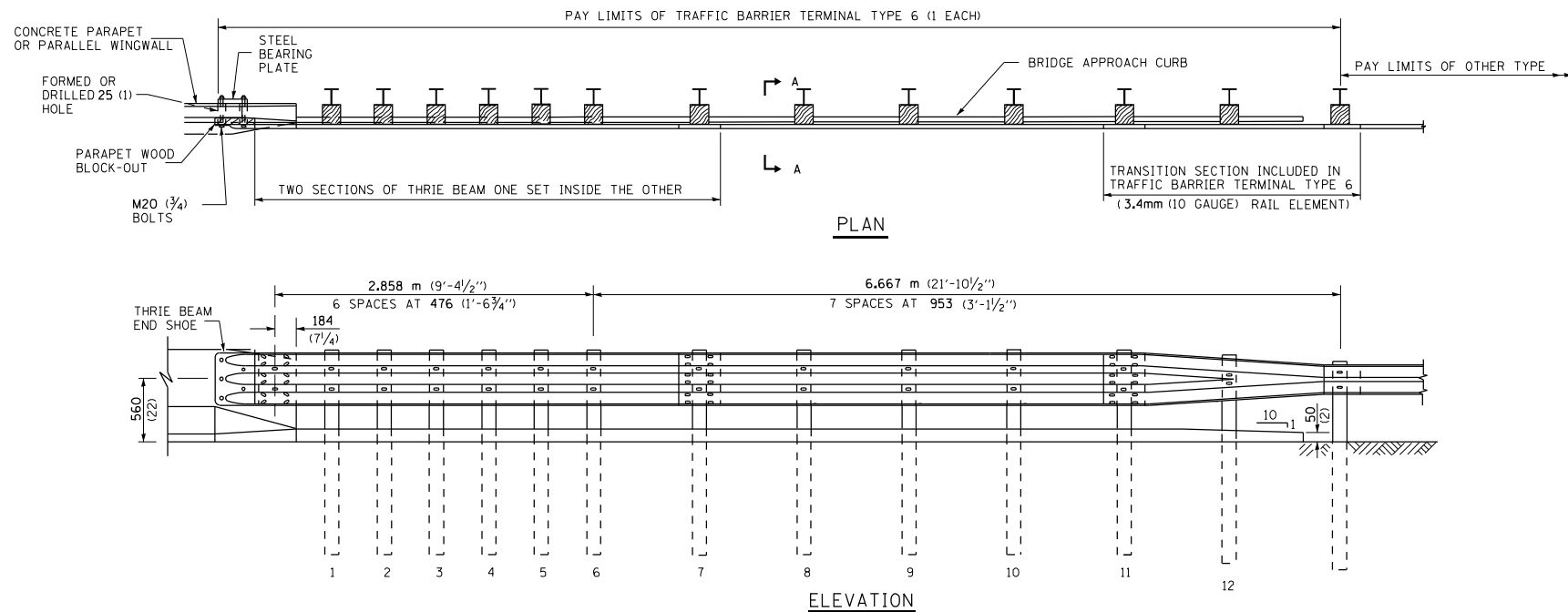
INSTALL PLATE WASHER D SO THAT THE 25 mm (1") PROJECTION FILLS THE REMAINDER OF THE SLOTTED HOLES IN THE 25 mm (1") END PLATE ON PLATE G AFTER THE M24 (1") DIA. BOLTS ARE IN PLACE.

* BOLTS SHALL BE PROVIDED WITH LOCKNUT OR DOUBLE NUT AND SHALL BE TIGHTENED ONLY TO A POINT THAT WILL ALLOW PLATE G TO BE FREE TO MOVE WHEN AN EXPANSION JOINT EXISTS BELOW THE CONNECTOR.

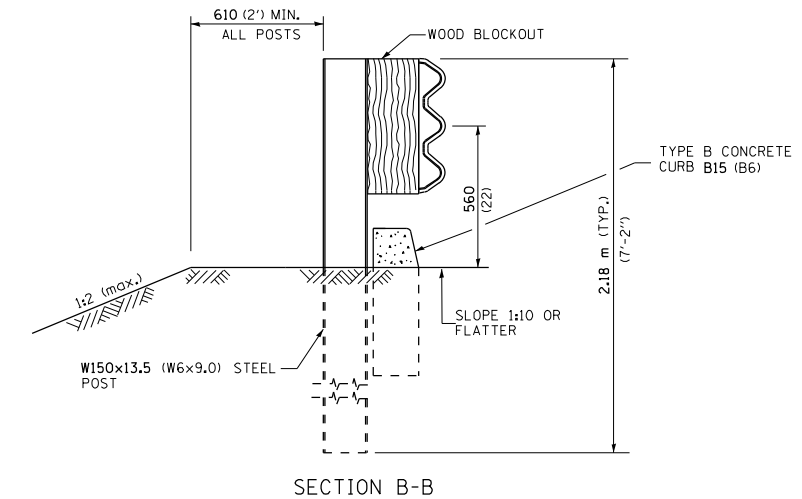
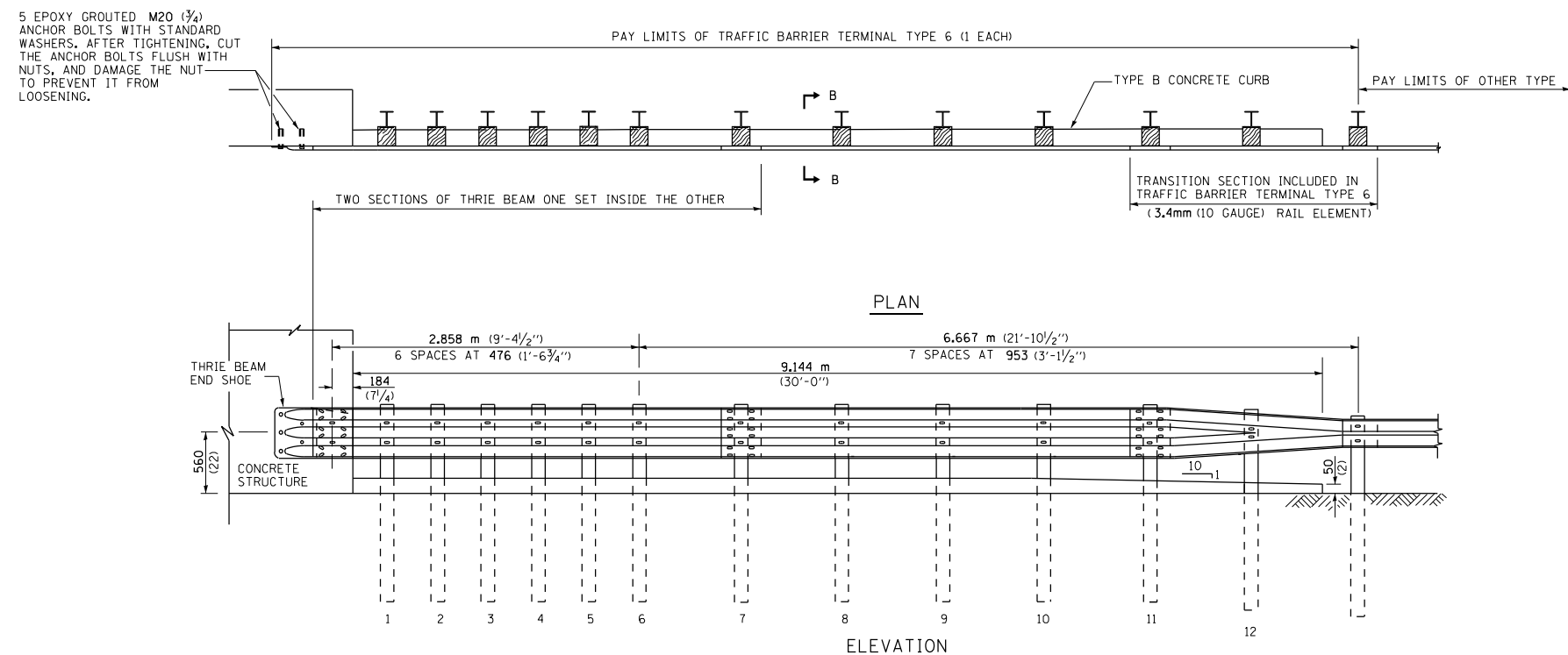
ALL DIMENSIONS ARE IN MILLIMETERS (INCHES) UNLESS OTHERWISE SHOWN.

THIS DETAIL IS APPLICABLE TO THE GUARDRAIL SYSTEM USED PRIOR TO JANUARY 1, 2007. FOR DETAILS ON THE MIDWEST GUARDRAIL SYSTEM, SEE STANDARD 630001.

FILE NAME =	USER NAME = lewiska	DESIGNED -	REVISED -	STATE OF ILLINOIS DEPARTMENT OF TRANSPORTATION	TRAFFIC BARRIER TERMINAL TYPE 5 & 5A			F.A. RTE.	SECTION	COUNTY	TOTAL SHEETS	SHEET NO.
pw\planroom.dot.illinois.gov\PIDOT\Documents\IDOT Offices\District 8\Projects\0876P14\Drawings\CADsheets\0876P14-sht-pln.dgn		CHECKED -	REVISED -					VARIOUS	DIST 8 GUARDRAIL 2022-1	VARIOUS	12	7
PLOT SCALE = 100.0000' / 1"		DATE -	REVISED -					CONTRACT NO. 76P14				
Default								ILLINOIS FED. AID PROJECT				



OTHER CONCRETE STRUCTURE

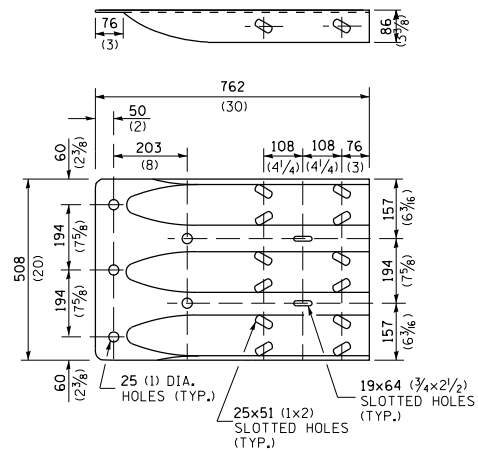


GENERAL NOTES

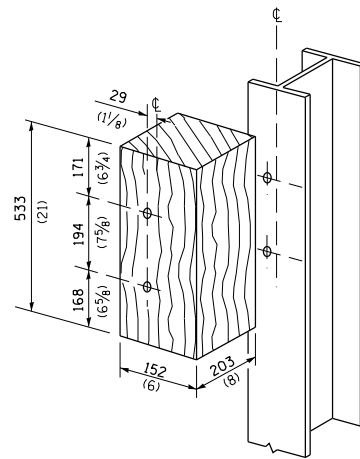
- THRIE BEAM RAIL SHALL BE BOLTED TO BLOCK-OUT AT ALL POSTS.
- ALL SLOPE RATIOS ARE EXPRESSED AS UNITS OF VERTICAL DISPLACEMENT TO UNITS OF HORIZONTAL DISPLACEMENT (V:H).
- ALL DIMENSIONS ARE IN MILLIMETERS (INCHES) UNLESS OTHERWISE SHOWN.

THIS DETAIL IS APPLICABLE TO THE GUARDRAIL SYSTEM USED PRIOR TO JANUARY 1, 2007. FOR DETAILS ON THE MIDWEST GUARDRAIL SYSTEM, SEE STANDARD 630001.

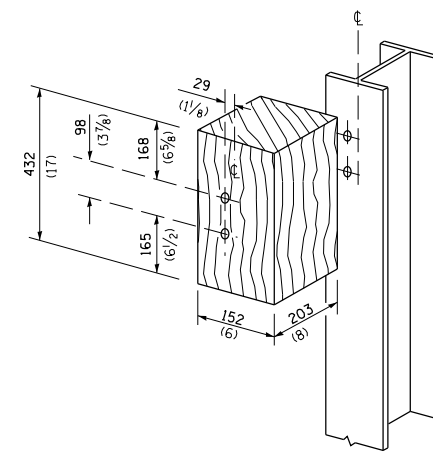
FILE NAME =	USER NAME = lewiska	DESIGNED -	REVISED -	STATE OF ILLINOIS DEPARTMENT OF TRANSPORTATION	TRAFFIC BARRIER TERMINAL, TYPE 6	F.A. RTE.	SECTION	COUNTY	TOTAL SHEETS	SHEET NO.
pw:\planroom.dot.illinois.gov\PIDOT\Documents\IDOT Offices\District 8\Projects\D876P4\Drawings\CADsheets\D876P14-sht-plen.dgn	DESIGNED -	REVISED -	VARIOUS			DIST 8 GUARDRAIL 2022-1	VARIOUS	12	8	
PLOT SCALE = 100.0000' / 1in.	CHECKED -	REVISED -	CONTRACT NO. 76P14							
Default	PLOT DATE = 5/4/2021	DATE -	SCALE: NONE			SHEET 1 OF 2 SHEETS	STA. TO STA.	ILLINOIS FED. AID PROJECT		



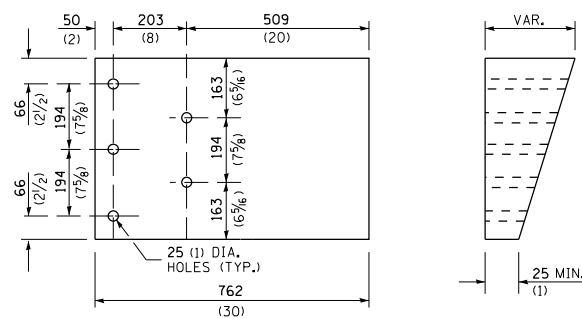
THRIE BEAM END SHOE DETAIL



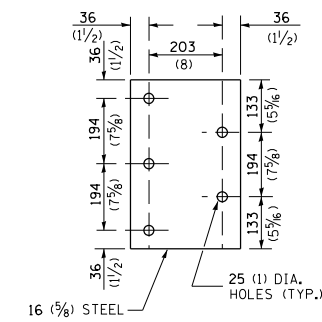
POSTS 1-11 WOOD BLOCKOUT DETAIL



POST 12 WOOD BLOCKOUT DETAIL



PARAPET WOOD BLOCK-OUT DETAIL

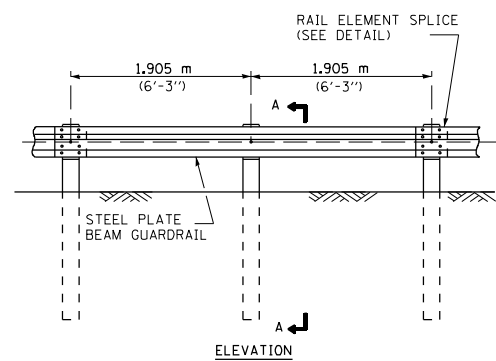


PARAPET STEEL BEARING PLATE DETAIL

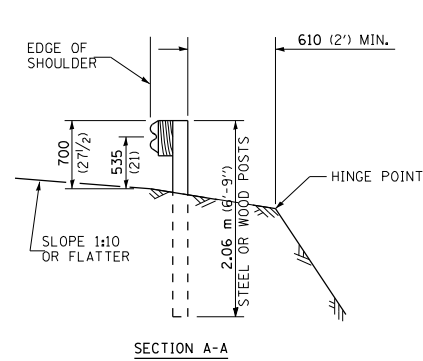
(5 EACH INDIVIDUAL 125x125x16 (5x5x5/8) STEEL PLATES WITH CENTERED 25 (1) HOLES MAY BE SUBSTITUTED FOR THE PLATE SHOWN.)

THIS DETAIL IS APPLICABLE TO THE GUARDRAIL SYSTEM USED PRIOR TO JANUARY 1, 2007. FOR DETAILS ON THE MIDWEST GUARDRAIL SYSTEM, SEE STANDARD 630001.

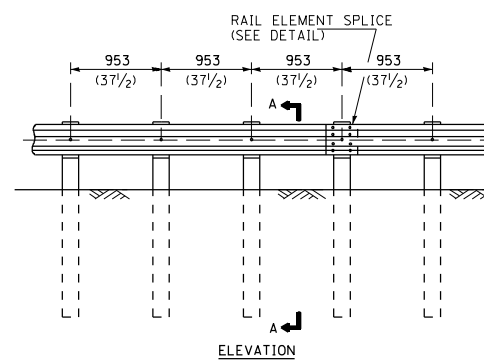
FILE NAME =	USER NAME = lewisko	DESIGNED -	REVISED -	STATE OF ILLINOIS DEPARTMENT OF TRANSPORTATION	TRAFFIC BARRIER TERMINAL, TYPE 6			F.A. RTE.	SECTION	COUNTY	TOTAL SHEETS	SHEET NO.	
pw:\planroom.dot.illinois.gov\PIDOT\Documents\IDOT Offices\District 8\Projects\D876P14\Drawings\CADsheets\D876P14-sht-plen.dgn		CHECKED -	REVISED -					VARIOUS	DIST 8 GUARDRAIL 2022-1	VARIOUS	12	9	
Default	PLOT SCALE = 100.0000' / in.	DATE -	REVISED -					SCALE: NONE SHEET 2 OF 2 SHEETS STA. TO STA.			CONTRACT NO. 76P14		
	PLOT DATE = 5/4/2021							ILLINOIS FED. AID PROJECT					



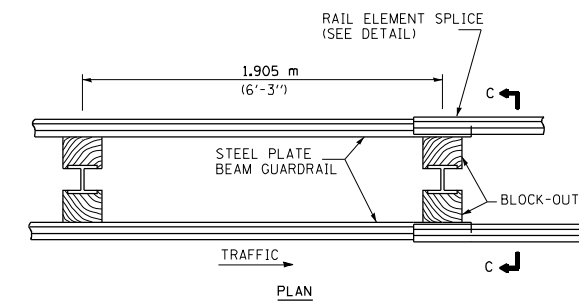
TYPE A
1.905 m (6'-3") TYPICAL POST SPACING



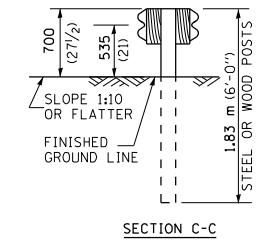
SECTION A-A



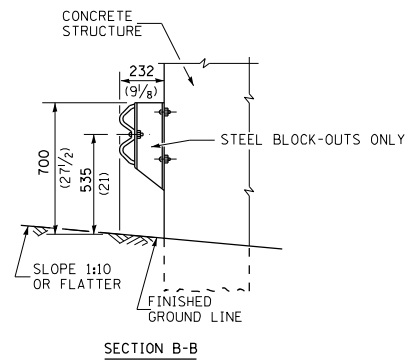
TYPE B
953 (37 1/2) CLOSED POST SPACING



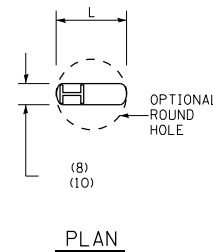
TYPE D
DOUBLE STEEL PLATE BEAM GUARDRAIL
1.905 m (6'-3") TYPICAL POST SPACING



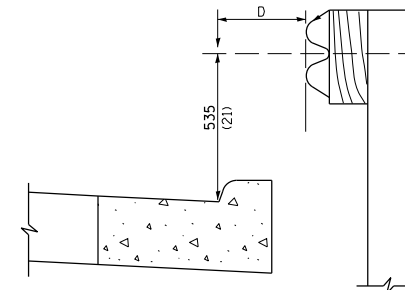
SECTION C-C



SECTION B-B

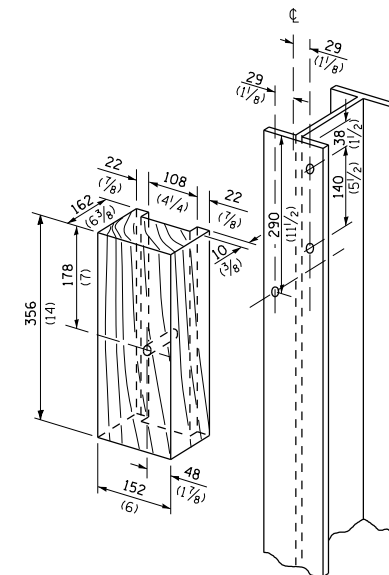


PLAN

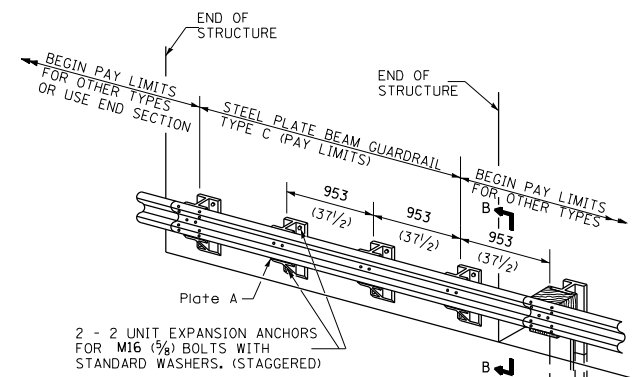


Note:
IF IT IS NECESSARY FOR D TO BE MORE THAN 300 (12) AND LESS THAN 3.0 m (10'-0") TYPE M-5 (M-2) CURB AND GUTTER (STD. 606001) SHALL BE USED IN FRONT OF AND IN ADVANCE OF THE GUARDRAIL.

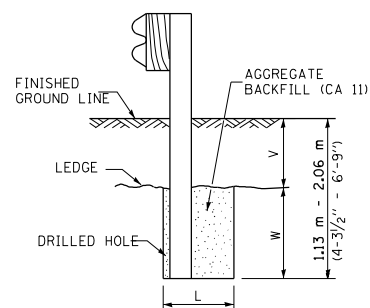
GUARDRAIL PLACED BEHIND CURB
(D = 0 DESIRABLE TO 300 (12) MAXIMUM)



WOOD BLOCK-OUT AND STEEL POST DETAILS



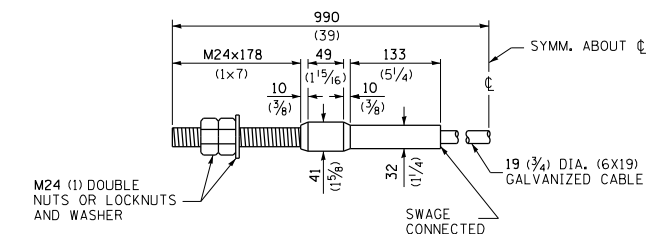
TYPE C
953 (37 1/2) BLOCK-OUT SPACING



NOTE:
LEDGE LINE IS TOP OF ROCK LEDGE OR HARD SLAG FILL.

ELEVATION

FOOTING FOR POST WHEN IMPERVIOUS MATERIAL IS ENCOUNTERED



M24 (1) DOUBLE NUTS OR LOCKNUTS AND WASHER

CABLE ASSEMBLY

(18,100 kg (40,000 LBS.) MIN. BREAKING STRENGTH) TIGHTEN TO TAUT TENSION.

V	W	L	
		Steel Post	Wood Post
0 - 460 (0 - 18)	610 (24)	530 (21)	580 (23)
>460 - 825 (>18 - 41.5)	305 (12)	203 (8)	250 (10)
>825 - 1.13 m (>41.5 - 53.5)	305 - 0 (12 - 0)	203 (8)	250 (10)

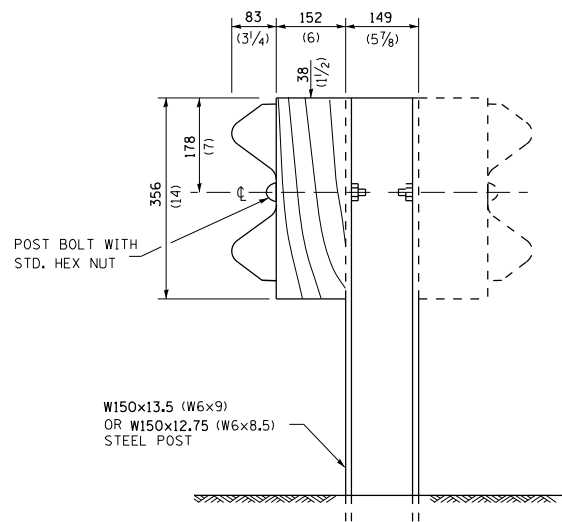
GENERAL NOTES

ALL SLOPE RATIOS ARE EXPRESSED AS UNITS OF VERTICAL DISPLACEMENT TO UNITS OF HORIZONTAL DISPLACEMENT (V:H).

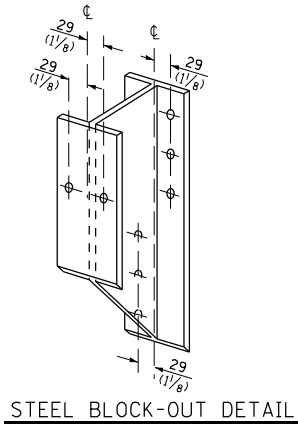
ALL DIMENSIONS ARE IN MILLIMETERS (INCHES) UNLESS OTHERWISE SHOWN.

THE EXISTING STEEL POSTS MAY BE DRILLED TO MATCH THE BOLT PATTERN SHOWN HEREIN FOR THE WOOD BLOCK-OUT, OR A NEW STEEL POST SHALL BE PROVIDED.

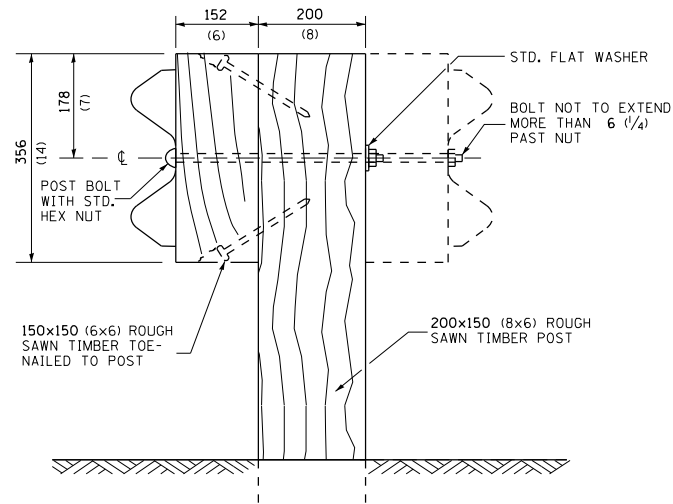
THIS DETAIL IS APPLICABLE TO THE GUARDRAIL SYSTEM USED PRIOR TO JANUARY 1, 2007. FOR DETAILS ON THE MIDWEST GUARDRAIL SYSTEM, SEE STANDARD 630001.



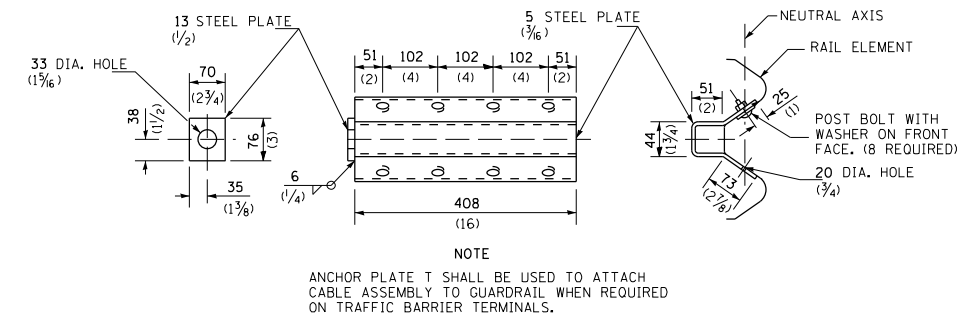
STEEL POST CONSTRUCTION



STEEL BLOCK-OUT DETAIL

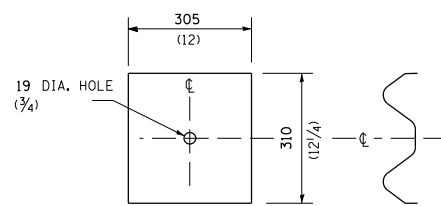


WOOD POST CONSTRUCTION



NOTE
ANCHOR PLATE T SHALL BE USED TO ATTACH CABLE ASSEMBLY TO GUARDRAIL WHEN REQUIRED ON TRAFFIC BARRIER TERMINALS.

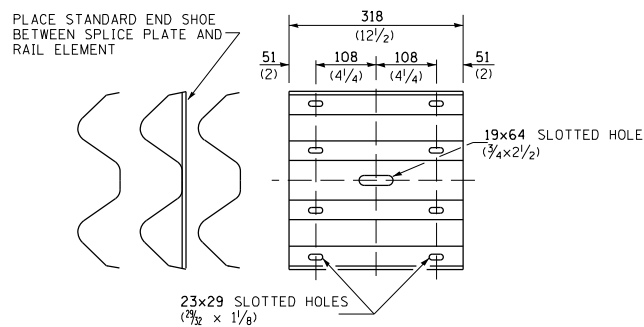
ANCHOR PLATE T DETAILS



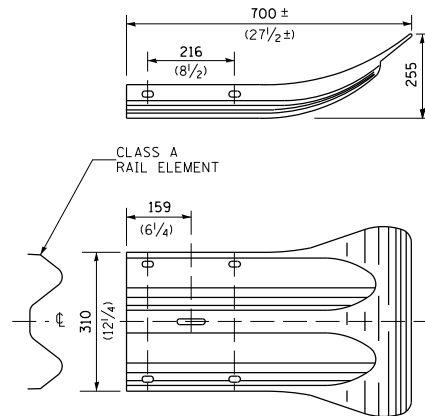
NOTE

PLATE A SHALL BE PLACED BETWEEN RAIL ELEMENT AND BLOCK-OUT AT NON-SPLICE MOUNTING POINTS ONLY WHEN STEEL BLOCK-OUTS ARE USED.

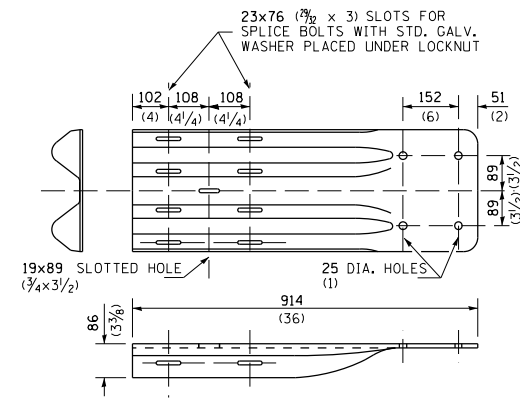
PLATE A



SPLICE PLATE



END SECTION



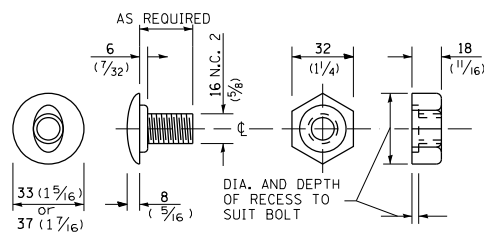
NOTE

WHEN END SHOE IS ATTACHED TO A BRIDGE PARAPET WHICH HAS AN EXPANSION JOINT, THE BOLTS SHALL BE PROVIDED WITH A LOCKNUT OR DOUBLE NUT AND SHALL BE TIGHTENED ONLY TO A POINT THAT WILL ALLOW GUARDRAIL MOVEMENT.

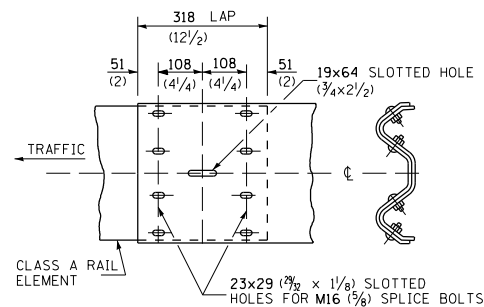
THE STANDARD END SHOE SHALL BE ATTACHED TO THE CONCRETE WITH PRE-DRILLED OR SELF-DRILLING ANCHOR BOLTS. THE ANCHOR CONE SHALL BE SET FLUSH WITH THE SURFACE OF THE CONCRETE.

EXTERNALLY THREADED STUDS PROTRUDING FROM THE SURFACE OF THE CONCRETE WILL NOT BE PERMITTED.

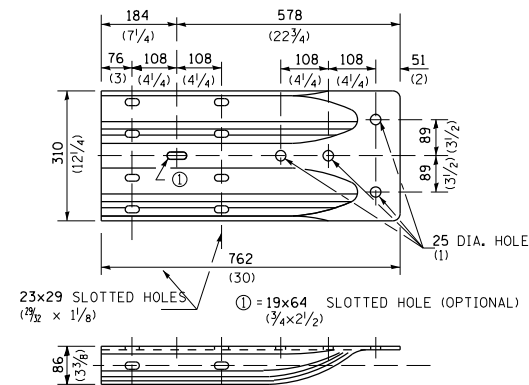
END SHOE



POST OR SPLICE BOLT & NUT



RAIL ELEMENT SPLICE



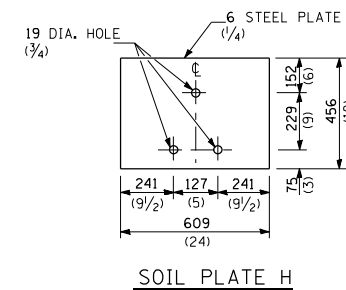
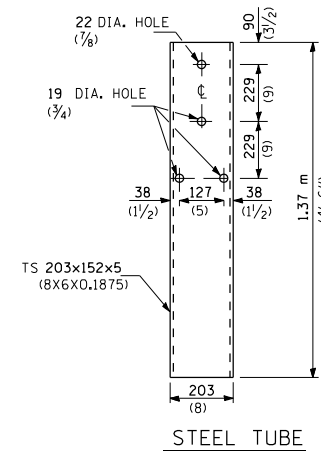
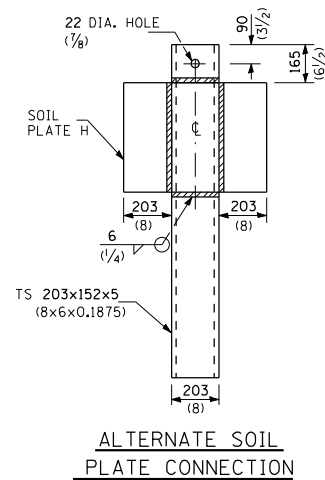
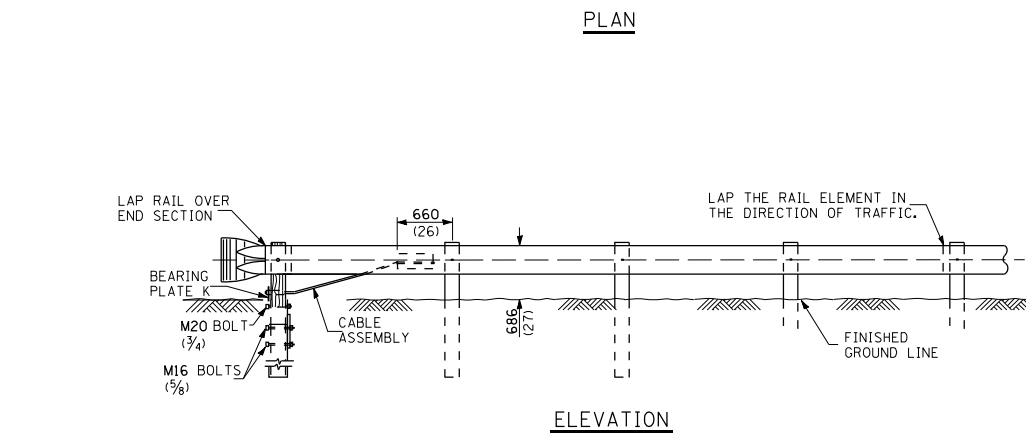
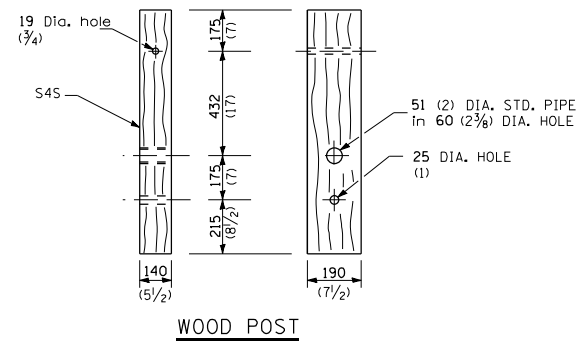
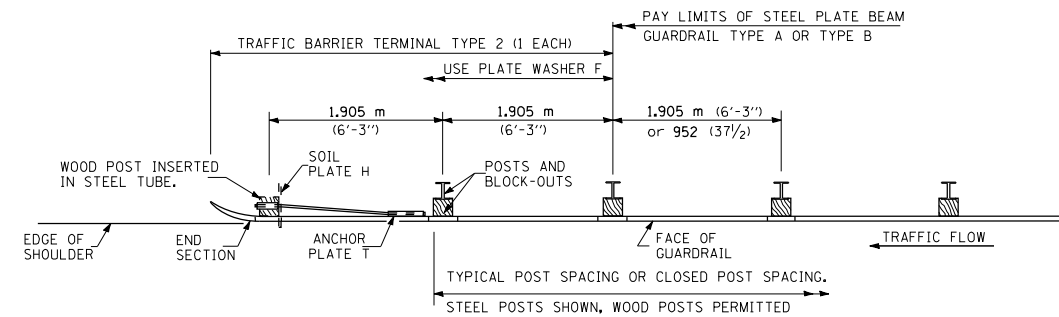
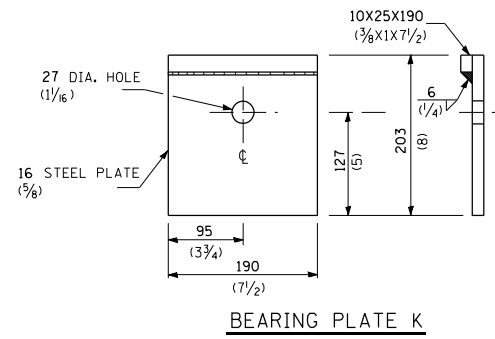
ALTERNATE END SHOE

THIS DETAIL IS APPLICABLE TO THE GUARDRAIL SYSTEM USED PRIOR TO JANUARY 1, 2007. FOR DETAILS ON THE MIDWEST GUARDRAIL SYSTEM, SEE STANDARD 630001.

FILE NAME =	USER NAME = lewisko	DESIGNED -	REVISED -	F.A. RTE.	SECTION	COUNTY	TOTAL SHEETS	SHEET NO.
p:\planroom.dot.illinois.gov\PIWIDOT\Documents\IDOT Offices\District 8\Projects\D876P4\DRAWING\CADsheets\D876P14-sht-pln.dgn				VARIOUS	DIST 8 GUARDRAIL 2022-1	VARIOUS	12	11
Default	PLOT SCALE = 100.0000' / in.	CHECKED -	REVISED -	SCALE: NONE SHEET 2 OF 2 SHEETS STA. TO STA.				CONTRACT NO. 76P14
	PLOT DATE = 5/4/2021	DATE -	REVISED -					ILLINOIS FED. AID PROJECT

STATE OF ILLINOIS
DEPARTMENT OF TRANSPORTATION

STEEL PLATE BEAM GUARDRAIL



GENERAL NOTES

USE PLATE WASHER F AT ALL POSTS.

THE BEARING PLATE K SHALL BE HELD IN POSITION BY (2) TWO EIGHT PENNY NAILS DRIVEN INTO THE POST AND BENT OVER THE TOP OF THE PLATE.

ALL DIMENSIONS ARE IN MILLIMETERS (INCHES) UNLESS OTHERWISE SHOWN.

THIS DETAIL IS APPLICABLE TO THE GUARDRAIL SYSTEM USED PRIOR TO JANUARY 1, 2007. FOR DETAILS ON THE MIDWEST GUARDRAIL SYSTEM, SEE STANDARD 630001.

FILE NAME =	USER NAME = lewisko	DESIGNED -	REVISED -	STATE OF ILLINOIS DEPARTMENT OF TRANSPORTATION	TRAFFIC BARRIER TERMINAL TYPE 2			F.A. RTE.	SECTION	COUNTY	TOTAL SHEETS	SHEET NO.			
pw:\planroom.dot.illinois.gov\PIDOT\Documents\IDOT Offices\District 8\Projects\D876P4\Drawings\CABsheets\D876P14-sht-plan.dgn		CHECKED -	REVISED -					VARIOUS	DIST 8 GUARDRAIL 2022-1	VARIOUS	12	12			
Default	PLOT SCALE = 100.0000' / in.	DATE -	REVISED -					SCALE: NONE			SHEET 1 OF 1 SHEETS STA. TO STA.			CONTRACT NO. 76P14	
	PLOT DATE = 5/4/2021							ILLINOIS FED. AID PROJECT							