

INDEX OF SHEETS

- SHEET 1. COVER SHEET
- SHEET 2. TYPICAL CROSS SECTION, SUMMARY OF QUANTITIES, STRUCTURAL DESIGN, BITUMINOUS MIXTURE TABLE
- SHEET 3. TYPICAL ENTRANCE DETAIL, MAILBOX DETAILS, SIDE ROAD RETURN, GENERAL NOTES

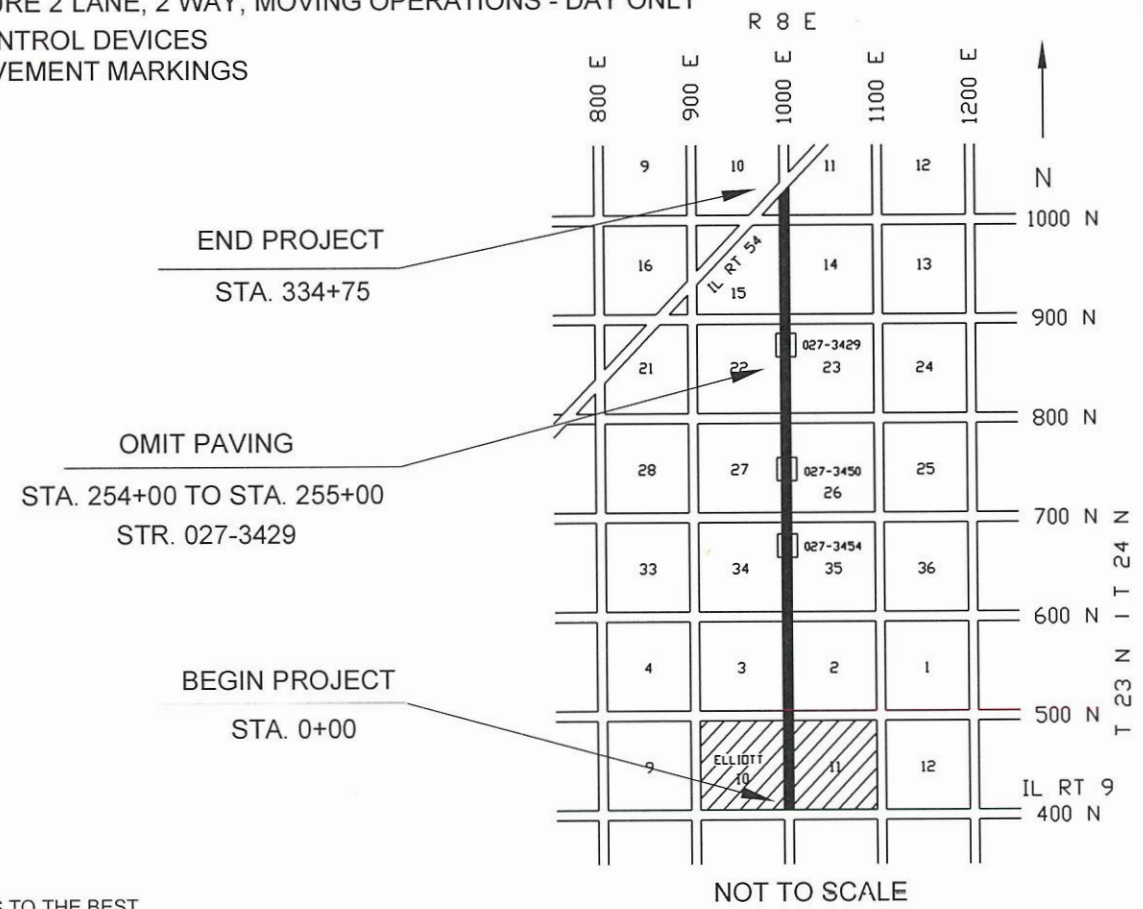
STANDARDS

- 000001-08 STANDARD SYMBOLS, ABBREVIATIONS AND PATTERNS
- 701301-04 LANE CLOSURE 2 LANE, 2 WAY, SHORT TIME OPERATIONS
- 701306-04 LANE CLOSURE 2 LANE, 2 WAY, SLOW MOVING OPERATIONS - DAY ONLY FOR SPEEDS > 45 MPH
- 701311-03 LANE CLOSURE 2 LANE, 2 WAY, MOVING OPERATIONS - DAY ONLY
- 701901-08 TRAFFIC CONTROL DEVICES
- 780001-05 TYPICAL PAVEMENT MARKINGS

FAS NO.	SECTION	COUNTY	TOTAL SHEETS	SHEET NO.
339	20-00141-00-RS	FORD	3	1
PROJECT Z154(691)				
CONTRACT # 87780				

STATE OF ILLINOIS
DEPARTMENT OF TRANSPORTATION
DIVISION OF HIGHWAYS
**PLANS FOR PROPOSED RESURFACING
SURFACE TRANSPORTATION RURAL PROGRAM**

C.H. 4 (ELLIOTT ROAD)
F.A.S. ROUTE 339 SECTION 20-00141-00-RS FORD COUNTY
PROJECT Z154(691)
JOB NO. C-93-015-22



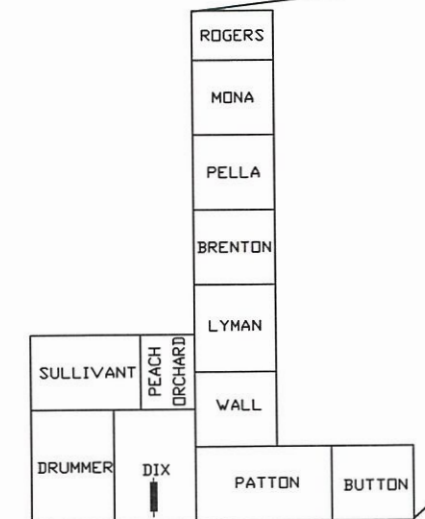
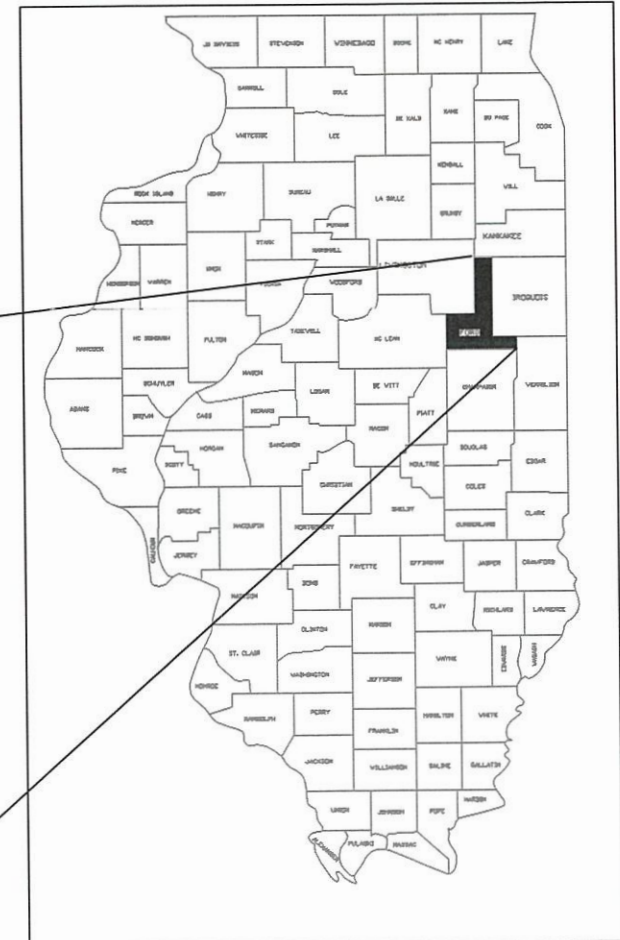
GROSS LENGTH = 33,475' = 6.334 MI.
NET LENGTH = 33,375' = 6.321 MI.
PREVIOUS CONSTRUCTION BY SECTION NUMBERS
95-00079-00-RS, 96-00085-00-RS, 96-00086-00-RS, 09-00000-08-GM & 20-00141-00-RS

FUNCTIONAL CLASSIFICATION: MAJOR COLLECTOR

Gregory L. Perkinson
ILLINOIS PROFESSIONAL NO. 062-035801

EXPIRES 11-30-2021

CURRENT (2021) ADT = 375 - 88% PC
7% SU
5% MU
DESIGN ADT (2031) = 400
DESIGN SPEED = 50 MPH



LOCATION OF SECTION

THE ACCEPTANCE OF THIS PROJECT IS BASED ON THE MINIMUM DESIGN CRITERIA UNDER 3R GUIDELINES.

APPROVED	<i>May 5, 2021</i> <i>[Signature]</i> FORD COUNTY, COUNTY ENGINEER
PASSED	<i>May 27, 2021</i> <i>[Signature]</i> DISTRICT 3 ENGINEER OF LOCAL ROADS & STREETS
Releasing for Bid Based on Limited Review	<i>May 27, 2021</i> <i>[Signature]</i> REGION 2 ENGINEER

STATE OF ILLINOIS DEPARTMENT OF TRANSPORTATION

PRINTED BY THE AUTHORITY OF THE STATE OF ILLINOIS

UTILITIES

UTILITIES ON THIS SECTION AT VARIOUS LOCATIONS INCLUDES TO THE BEST OF OUR KNOWLEDGE:

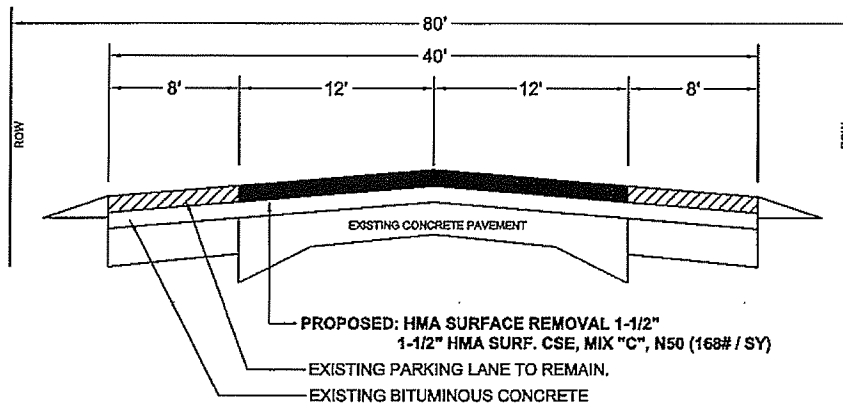
FRONTIER TELEPHONE COMPANY (UNDERGROUND)
OVERHEAD POWER - EASTERN ILLINI

CONTRACTORS OR SUBCONTRACTORS SHALL CONTACT J.U.L.I.E. (1-800-892-0123) AT LEAST 72 HOURS PRIOR TO ANY EXCAVATION FOR UTILITIES LOCATION

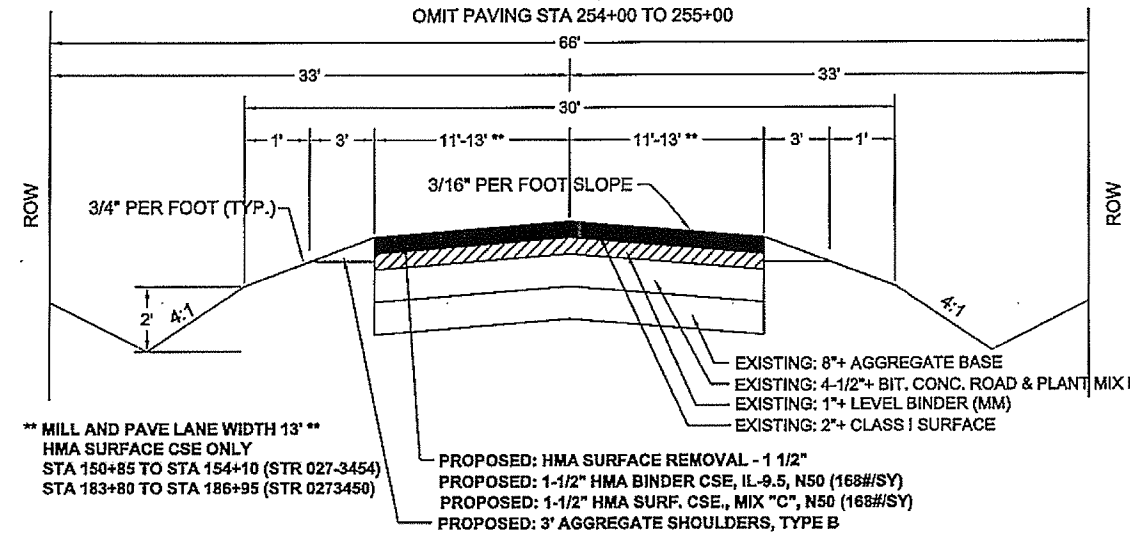
JOB NO. C-93-015-22
CONTRACT NO. 87780

FAS NO.	SECTION	COUNTY	TOTAL SHEETS	SHEET NO.
339	20-00141-00-RS		3	2
PROJECT Z154(691)				
CONTRACT # 87780				

TYPICAL CROSS SECTION
SECTION 20-00141-00-RS (ELLIOTT ROAD)
STATION 0+00 TO 26+00



TYPICAL CROSS SECTION
SECTION 20-00141-00-RS (ELLIOTT ROAD)
STATION 26+00 TO 334+75
OMIT PAVING STA 254+00 TO 255+00



STRUCTURAL DESIGN
STA. 26+00 TO STA. 334+75
SEC. 20-00141-00-RS

STRUCTURAL DESIGN TRAFFIC YEAR	2031
CURRENT A.D.T.	375
A.D.T. 2031	400
P.V.	352
S.U.	28
M.U.	20
CLASS	III
MINIMUM SOIL SUPPORT IBV	3
TRAFFIC FACTOR	0.108
DI REQUIRED	2.90
EXISTING BASE:	
8"+ AGGREGATE BASE	8" X 0.08 = 0.640
2"+ BIT CONC ROAD MIX B	2.0" X 0.11 = 0.220
2.5"+ BIT CONC PLANT MIX B	2.5" X 0.17 = 0.425
1"+ BIT. CONC LEVEL BINDER	1.0" X 0.30 = 0.300
2" BIT. CONC CL I (POST 1955)	2.0" X 0.30 = 0.600
SUBTOTAL EXISTING	2.185
PROPOSED:	
COLD MILL 1.50" EXISTING SURFACE	1.50" X - 0.30 = - 0.450
1.5" HMA BINDER CSE, IL 9.5, N50	1.50" X 0.40 = 0.600
1.5" HMA SURF. CSE., IL 9.5, MIX "C", N50	1.50" X 0.40 = 0.600
DI TOTAL	2.935

SUMMARY OF QUANTITIES

CONSTRUCTION TYPE CODE 0005

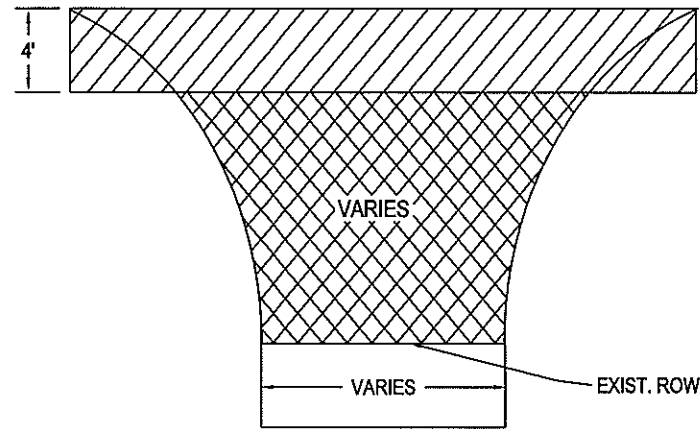
CODE NO.	ITEM	UNIT	QUANTITY
* 40600290	BITUMINOUS MATERIALS (TACK COAT)	POUND	53,480
40600990	TEMPORARY RAMP	SQ YD	100
* 40602978	HOT-MIX ASPHALT BINDER COURSE, IL-9.5, N50	TON	5,625
* 40604050	HOT- MIX ASPHALT SURFACE COURSE, IL-9.5, MIX "C", N50	TON	6,950
40800050	INCIDENTAL HOT-MIX ASPHALT SURFACING	TON	165
44000155	HOT-MIX ASPHALT SURFACE REMOVAL, 1-1/2"	SQ YD	84,450
* 48101200	AGGREGATE SHOULDERS, TYPE B	TON	3,500
* 67100100	MOBILIZATION	L SUM	1
70100460	TRAFFIC CONTROL AND PROTECTION, STANDARD 701306	L SUM	1
70300100	SHORT TERM PAVEMENT MARKING	FOOT	9,500
70300150	SHORT TERM PAVEMENT MARKING REMOVAL	SQ FT	1,105
# 78001110	PAINT PAVEMENT MARKING - LINE 4"	FOOT	14,800

* INDICATES SEE SPECIAL PROVISIONS
INDICATES SPECIALTY ITEM

BITUMINOUS MIXTURE TABLE

LOCATION (S):	MAINLINE	MAINLINE	INTERSECTIONS
MIXTURE USE (S) :	HMA BINDER	HMA SURFACE	INCIDENTAL HMA
PG GRADE	PG 64-22	PG 64-22	PG 64-22
DESIGN AIR VOIDS	4.0 % @ N50	4.0 % @ N50	4.0 % @ N50
MIX COMPOSITION	IL 9.5	IL 9.5	IL 9.5
FRICTION AGGREGATE	N/A	MIXTURE "C"	MIXTURE "C"
MIXTURE WEIGHT :	112.0 LB/SQ YD/INCH	112.0 LB/SQ YD/INCH	112.0 LB/SQ YD/INCH
QUALITY MANAGEMENT PROGRAM :	QC/QA	QC/QA	QC/QA
SUBLOT SIZE :	N/A	N/A	N/A
DENSITY TEST METHOD :	% of GROWTH CURVE	% of GROWTH CURVE	SATISFACTION OF ENG.

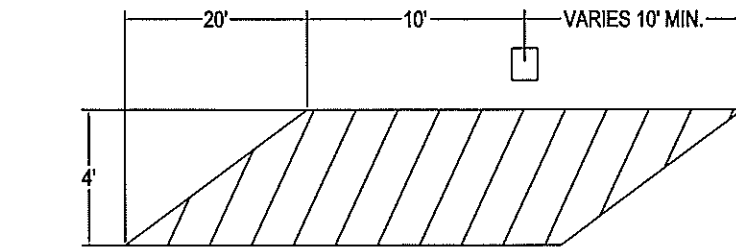
FAS NO.	SECTION	COUNTY	TOTAL SHEETS	SHEET NO.
339	20-00141-00-RS		3	3
PROJECT Z154(691)				
CONTRACT # 87780				



TYPICAL SIDE ROAD RETURN

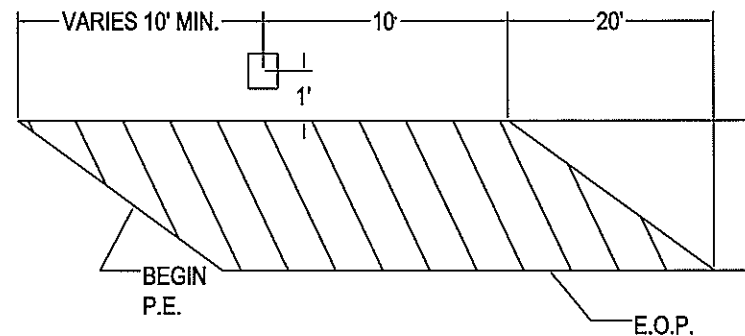
16 EACH

- | | |
|-----------------------|------------------------|
| 8+67 LT (YATES) | 30+94 RT (ELM) |
| 12+62 LT (FORMAN) | 35+05 RT (MIDWAY) |
| 15+94 LT (THORSON) | 36+85 RT (NOLAND) |
| 19+51 LT & RT (SOUTH) | 39+18 RT (PARK) |
| 26+75 RT (RAILROAD) | 44+21 RT (NORTH) |
| 52+75 LT & RT (500N) | 211+50 LT & RT (800N) |
| 105+65 LT & RT (600N) | 264+55 LT & RT (900N) |
| 158+50 LT & RT (700N) | 317+75 LT & RT (1000N) |



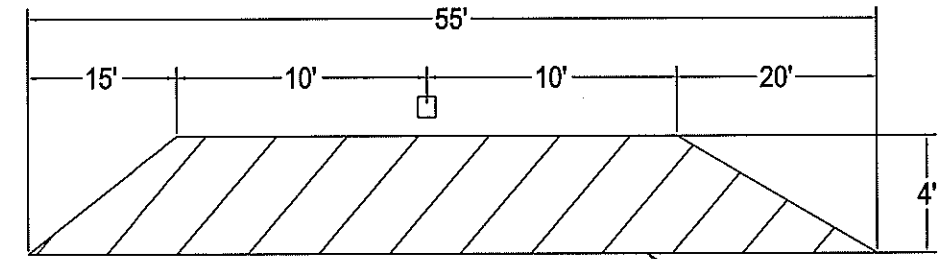
TYPICAL MAILBOX FOLLOWING

1 EACH
90+00 RT



TYPICAL MAILBOX LEAD IN

1 EACH
187+84 LT



TYPICAL MAILBOX TURN OUT

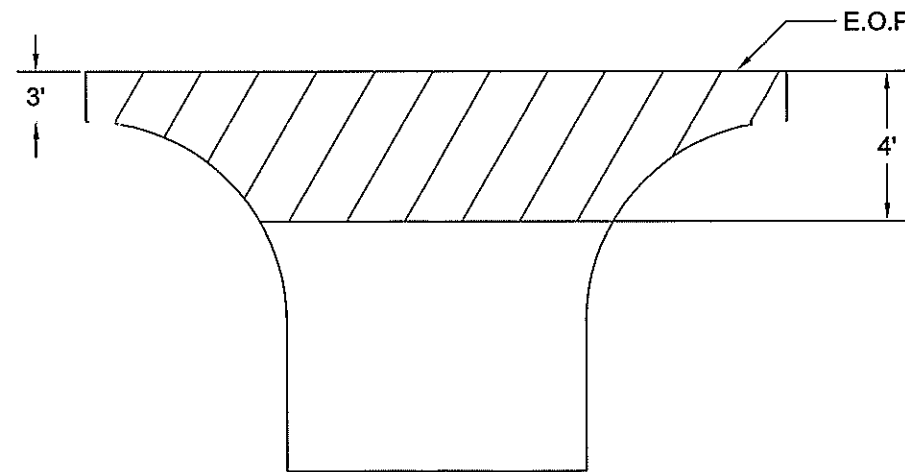
0 EACH



AREA TO BE PAID AS
INCIDENTAL BITUMINOUS SURFACING



AREA TO BE CONSTRUCTED
DURING MAINLINE PAVING OPERATIONS
SLOPE = 3/4" PER FOOT



TYPICAL PRIVATE ENTRANCE

10 EACH

LT. STA.	RT. STA.
90+00	87+80 92+75
132+25	89+30 146+30
187+70	91+60 147+85
326+60	

NOTES

1. USE SAME MAINLINE MATERIAL FOR SIDE ROAD RETURNS, PRIVATE ENTRANCES AND MAILBOXES.
2. AGGREGATE SHOULDERS TO BE PLACED BEHIND SIDE ROAD RETURNS, PRIVATE ENTRANCES AND MAILBOXES AS DIRECTED BY THE ENGINEER.
3. SHORT TERM PAVEMENT MARKINGS TO BE REMOVED BY THE CONTRACTOR.
4. THE FOLLOWING APPLICATION RATES HAVE BEEN ASSUMED IN CALCULATING QUANTITIES:

AGGREGATE SHOULDERS	2.00 TON / CU YD
BIT MATL (PR CT)	0.05 LBS / SQ FT
HOT MIX ASPHALT	112 # / SQ YD / INCH
SHORT TERM PVMT MKING	4 FT / 40 FT OF APPL.