

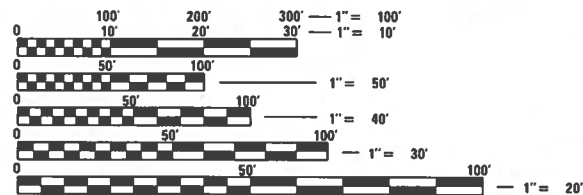
07-30-2021 LETTING ITEM 061

INDEX OF SHEETS

- 1 COVER SHEET
- 2 GENERAL NOTES
- 3 SUMMARY OF QUANTITIES
- 4 PLAN SHEET
- 5 SERVICE INSTALLATION AND LIGHTING CONTROLLER DETAIL

IDOT STANDARDS

- 000001-08
- 701001-02
- 701006-05
- 701201-05
- 701901-08
- 821101-02
- 830006-05
- 836001-04
- 838001-01



FULL SIZE PLANS HAVE BEEN PREPARED USING STANDARD ENGINEERING SCALES. REDUCED SIZED PLANS WILL NOT CONFORM TO STANDARD SCALES. IN MAKING MEASUREMENTS ON REDUCED PLANS, THE ABOVE SCALES MAY BE USED.

J.U.L.I.E.
JOINT UTILITY LOCATION INFORMATION FOR EXCAVATORS
1-800-892-0123
OR 811

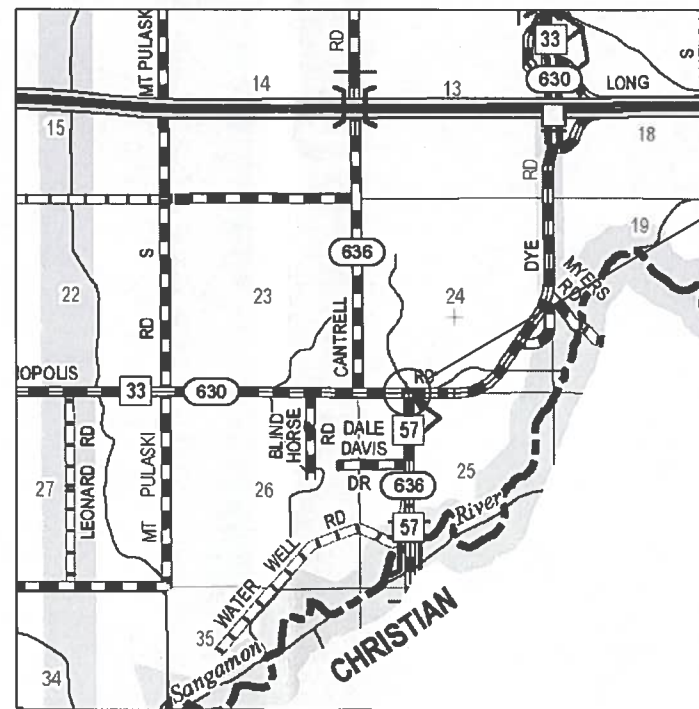
CONTRACT NO. 93771

STATE OF ILLINOIS
SANGAMON COUNTY HIGHWAY DEPARTMENT

**PROPOSED
HIGHWAY PLANS**

FAS ROUTE 630 (CH33 /CH57)
SECTION NO: 18-00073-03-SP
PROJECT NO: 7317(240)
HSIP NO: 201809114
SAFETY LIGHTING
SANGAMON COUNTY

C-96-007-20



LOCATION MAP

PROJECT LOCATION



SEAL
SIGNATURE: *Matthew J Overbey*
DATE SIGNED: *April 13, 2021*
LICENSE EXPIRATION DATE: 11/30/2021



F.A.S. RTE.	SECTION	COUNTY	TOTAL SHEETS	SHEET NO.
630	18-00073-03-SP	SANGAMON	5	1
		ILLINOIS	CONTRACT NO. 93771	



LOCATION OF SECTION INDICATED THUS: - [shaded area] -

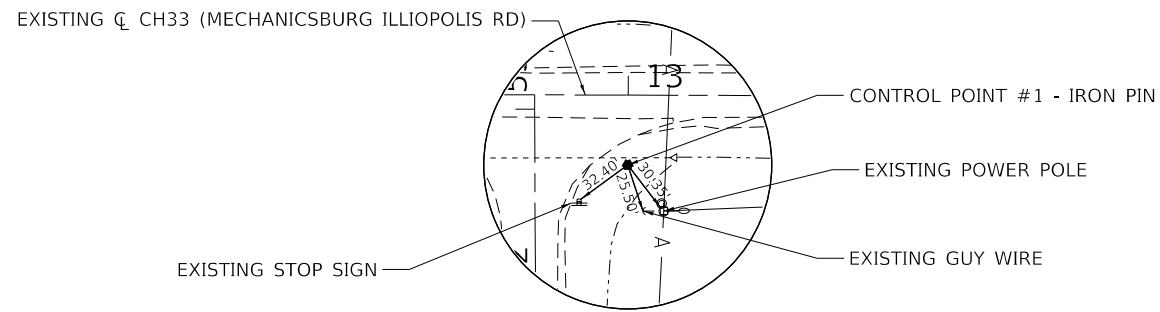
APPROVED *April 16 20 21*
B. Davis
SANGAMON COUNTY ENGINEER

PASSED *05-11 20 21*
Brian Wignata
DISTRICT SIX ENGINEER OF
LOCAL ROADS & STREETS

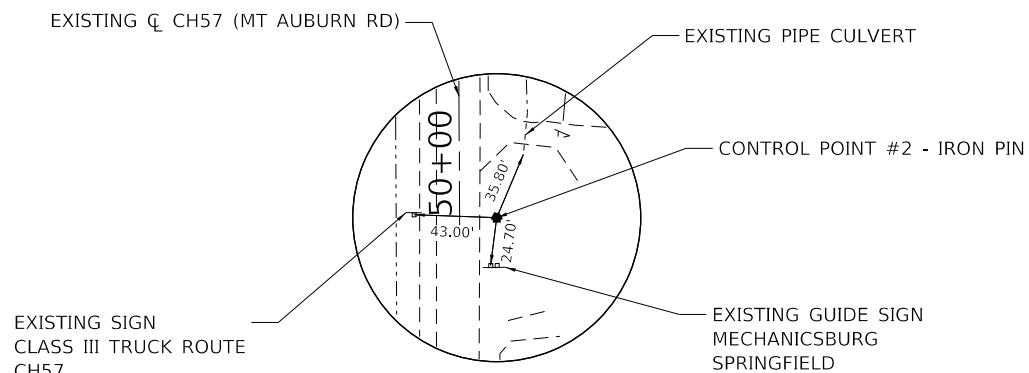
Releasing For Bid Based on Limited Review *05-11 20 21*
Jeffrey Myer
REGION FOUR ENGINEER

STATE OF ILLINOIS
DEPARTMENT OF TRANSPORTATION

PRINTED BY THE AUTHORITY
OF THE STATE OF ILLINOIS



CONTROL POINT #1
 STA. 12+99.86, 36.37' LT.
 (CH 33 - MECHANICSBURG ILLIOPOLIS RD)
 N: 1147910.7890
 E: 2548723.2710



CONTROL POINT #2
 STA. 50+07.77, 19.37' LT.
 (CH 57 - MT. AUBURN RD)
 N: 1147647.7380
 E: 2548695.4080

GENERAL NOTES

1. THE CONTRACTOR SHALL BE RESPONSIBLE FOR PROTECTING UTILITY PROPERTY FROM CONSTRUCTION OPERATIONS AS OUTLINED IN ARTICLE 107.39 OF THE STANDARD SPECIFICATIONS, THE J.U.L.I.E. NUMBER IS 1-800-892-0123.
2. THE CONTRACTOR SHALL TAKE REASONABLE PRECAUTIONS TO PROTECT PUBLIC AND PRIVATE PROPERTY. IF AT ANY TIME, HE/SHE DAMAGES OR DESTROYS PUBLIC OR PRIVATE PROPERTY, THE CONTRACTOR SHALL, AT HIS OWN EXPENSE, RESTORE SUCH PROPERTY TO A CONDITION EQUAL TO THAT EXISTING BEFORE SUCH DAMAGE.
3. IT IS THE CONTRACTOR'S RESPONSIBILITY TO ASCERTAIN EXISTING FIELD CONDITIONS PRIOR TO BIDDING ON THE PROJECT.
4. ALL LOCATIONS AND DIMENSION ARE APPROXIMATE. CONTRACTOR SHALL FIELD VERIFY ALL ELECTRICAL EQUIPMENT LOCATIONS AND DIMENSIONS.
5. FERTILIZERS, SEED, AND MUCHL SHALL BE APPLIED ON ALL AREAS THAT ARE DISTURBED BY CONSTRUCTION OPERATIONS AS DIRECTED BY THE ENGINEER.

ROADWAY INFORMATION

CH 33 (MECHANISBURG ILLIOPOLIS RD): MAJOR COLLECTOR
 ADT = 775 (EAST LEG)
 ADT = 325 (WEST LEG)

CH 57 (MT AUBURN RD) = MAJOR COLLECTOR
 ADT = 625

DESIGN SPEED = 50 MPH

CLEARZONE = 16 FT

MODEL: Default
 FILE NAME: C:\Sungam\c03002390_000\DrawRoadway\CADD_Sheets1...

USER NAME = Matt Overbey	DESIGNED - MJO	REVISED -
	DRAWN - MJO	REVISED -
PLOT SCALE = 200.0000' / in.	CHECKED - JRV	REVISED -
PLOT DATE = 4/13/2021 (10:52:43 AM)	DATE - APRIL 2021	REVISED -

**STATE OF ILLINOIS
 DEPARTMENT OF TRANSPORTATION**

GENERAL NOTES	
SCALE: N/A	SHEET OF SHEETS STA. TO STA.

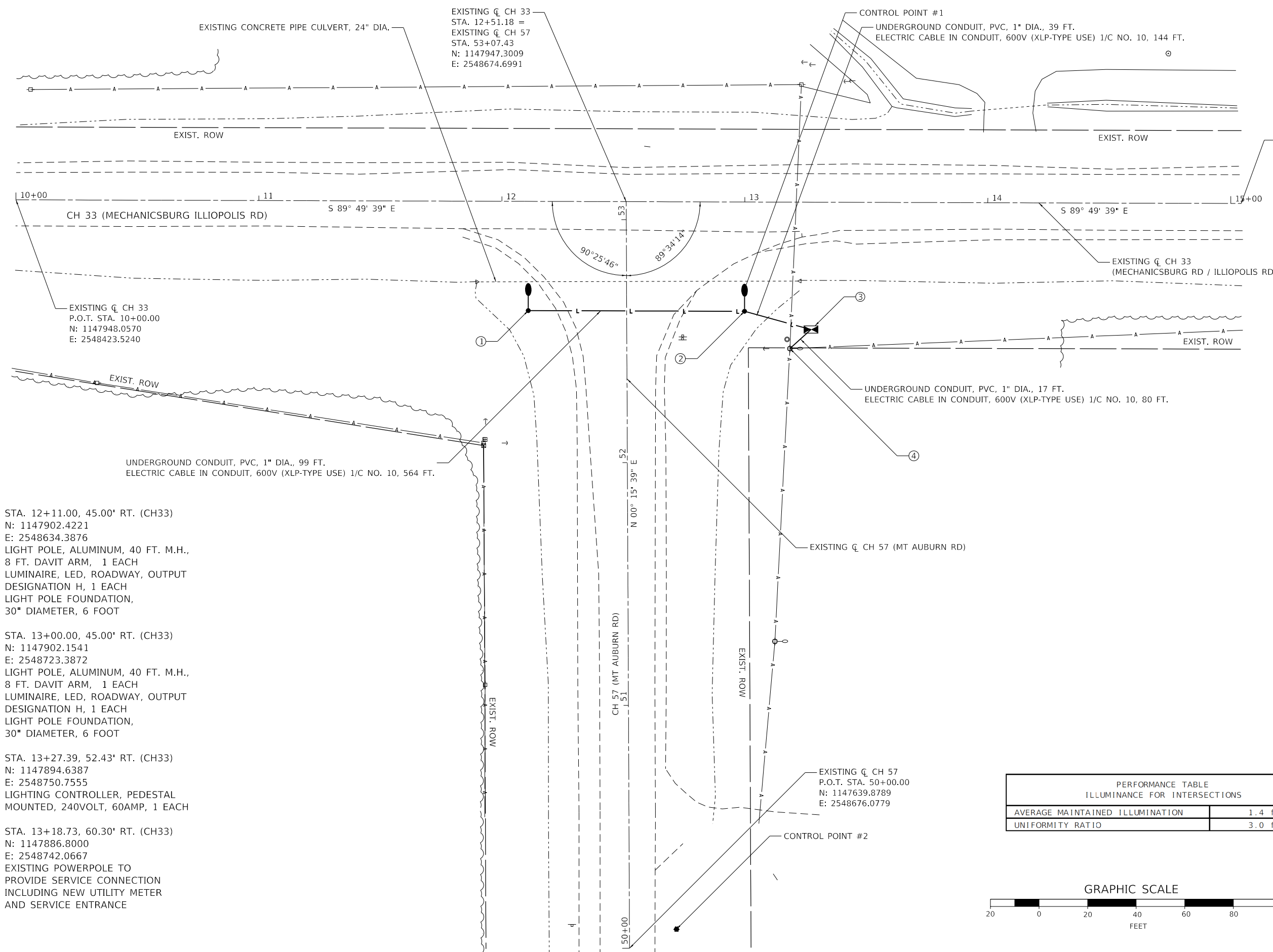
F.A.S. RTE.	SECTION	COUNTY	TOTAL SHEETS	SHEET NO.
630	18-00073-03-5P	SANGAMON	5	2
CONTRACT NO. 93771				
ILLINOIS FED. AID PROJECT				

CODE NO.	ITEM	UNIT	TOTAL QUANTITY	CONSTR. CODE	
				CH33 / CH 57	HIGHWAY LIGHTING
				0021	
				RURAL	
20101400	NITROGEN FERTILIZER NUTRIENT	POUND	23	23	
20101500	PHOSPHORUS FERTILIZER NUTRIENT	POUND	23	23	
20101600	POTASSIUM FERTILIZER NUTRIENT	POUND	23	23	
* 25000200	SEEDING, CLASS 2	ACRE	0.25	0.25	
25100115	MULCH, METHOD 2	ACRE	0.25	0.25	
* 67100100	MOBILIZATION	L SUM	1	1	
* 70100450	TRAFFIC CONTROL AND PROTECTION, STANDARD 701201	L SUM	1	1	
* 80400100	ELECTRIC SERVICE INSTALLATION	EACH	1	1	
* 81028320	UNDERGROUND CONDUIT, PVC, 1" DIA.	FOOT	155	155	
81702110	ELECTRIC CABLE IN CONDUIT, 600V (XLP-TYPE USE) 1/C NO. 10	FOOT	788	788	
* 82110008	LUMINAIRE, LED, ROADWAY, OUTPUT DESIGNATION H	EACH	2	2	
82500330	LIGHTING CONTROLLER, PEDESTAL MOUNTED, 240VOLT, 60AMP	EACH	1	1	
83002300	LIGHT POLE, ALUMINUM, 40 FT. M.H., 8 FT. DAVIT ARM	EACH	2	2	
83600300	LIGHT POLE FOUNDATION, 30" DIAMETER	FOOT	12	12	
83800650	BREAKAWAY DEVICE, COUPLING WITH STAINLESS STEEL SCREEN	EACH	8	8	

* SEE SPECIAL PROVISIONS

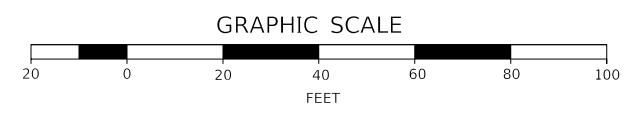
MODEL: MODELNAMES
FILE NAME: FILES

USER NAME = \$USERS	DESIGNED - MJO	REVISED -	STATE OF ILLINOIS DEPARTMENT OF TRANSPORTATION	SUMMARY OF QUANTITIES				F.A.S. RTE.	SECTION	COUNTY	TOTAL SHEETS	SHEET NO.		
DRAWN - MJO	CHECKED - JRV	REVISED -		SCALE: N/A	SHEET	OF	SHEETS	STA.	TO STA.	630	18-00073-03-SP	SANGAMON	5	3
PLOT SCALE = \$SCALES	DATE - APRIL 2021	REVISED -		CONTRACT NO. 93771										
PLOT DATE = \$DATES	ILLINOIS FED. AID PROJECT													



- ① STA. 12+11.00, 45.00' RT. (CH33)
N: 1147902.4221
E: 2548634.3876
LIGHT POLE, ALUMINUM, 40 FT. M.H.,
8 FT. DAVIT ARM, 1 EACH
LUMINAIRE, LED, ROADWAY, OUTPUT
DESIGNATION H, 1 EACH
LIGHT POLE FOUNDATION,
30" DIAMETER, 6 FOOT
- ② STA. 13+00.00, 45.00' RT. (CH33)
N: 1147902.1541
E: 2548723.3872
LIGHT POLE, ALUMINUM, 40 FT. M.H.,
8 FT. DAVIT ARM, 1 EACH
LUMINAIRE, LED, ROADWAY, OUTPUT
DESIGNATION H, 1 EACH
LIGHT POLE FOUNDATION,
30" DIAMETER, 6 FOOT
- ③ STA. 13+27.39, 52.43' RT. (CH33)
N: 1147894.6387
E: 2548750.7555
LIGHTING CONTROLLER, PEDESTAL
MOUNTED, 240VOLT, 60AMP, 1 EACH
- ④ STA. 13+18.73, 60.30' RT. (CH33)
N: 1147886.8000
E: 2548742.0667
EXISTING POWERPOLE TO
PROVIDE SERVICE CONNECTION
INCLUDING NEW UTILITY METER
AND SERVICE ENTRANCE

PERFORMANCE TABLE ILLUMINANCE FOR INTERSECTIONS	
AVERAGE MAINTAINED ILLUMINATION	1.4 fc
UNIFORMITY RATIO	3.0 fc



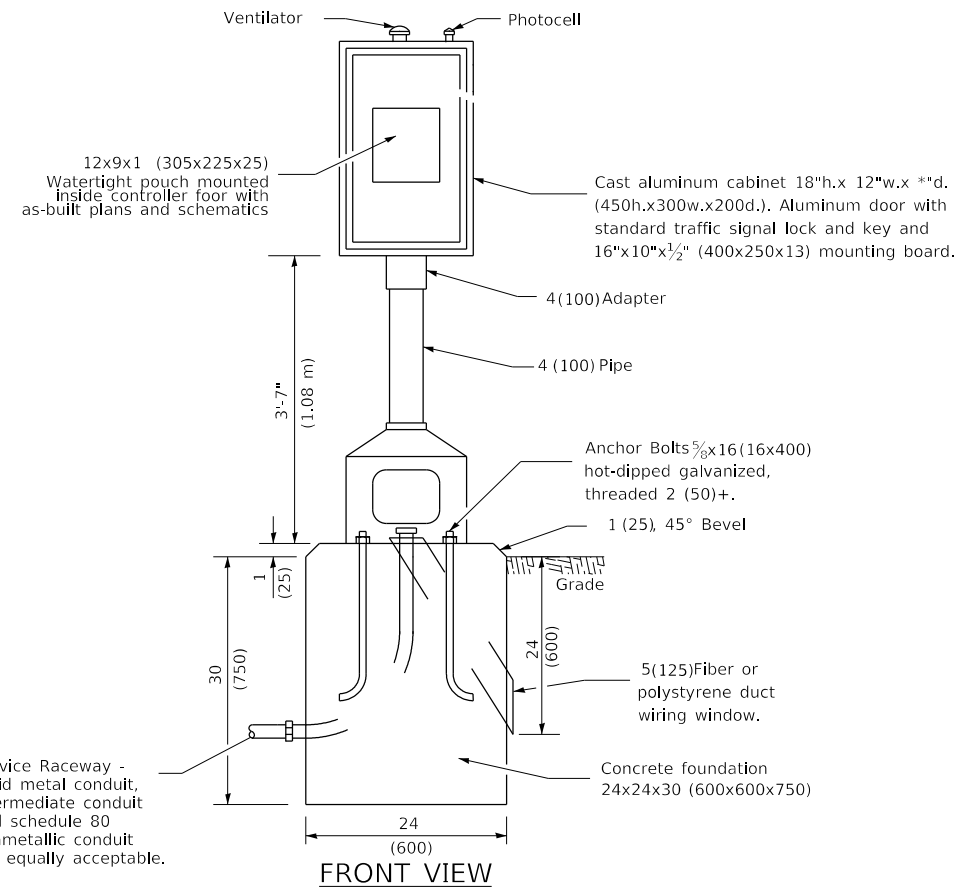
MODEL: Default
FILE NAME: E:\Sungam\c03002390_000\Drawings\Roadway\CADD_Sheets\...

USER NAME = Matt Overbey	DESIGNED - JRV	REVISED -
	DRAWN - MJO	REVISED -
PLOT SCALE = 40.0000' / in.	CHECKED - MJO	REVISED -
PLOT DATE = 4/13/2021 - 10:52:45 AM	DATE - APRIL 2021	REVISED -

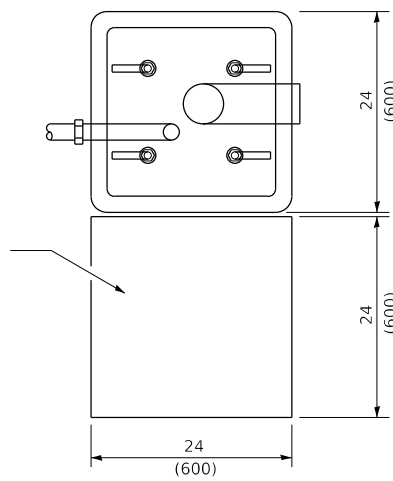
**STATE OF ILLINOIS
DEPARTMENT OF TRANSPORTATION**

LIGHTING PLAN			
SCALE: 1"=20'	SHEET	OF SHEETS	STA. TO STA.

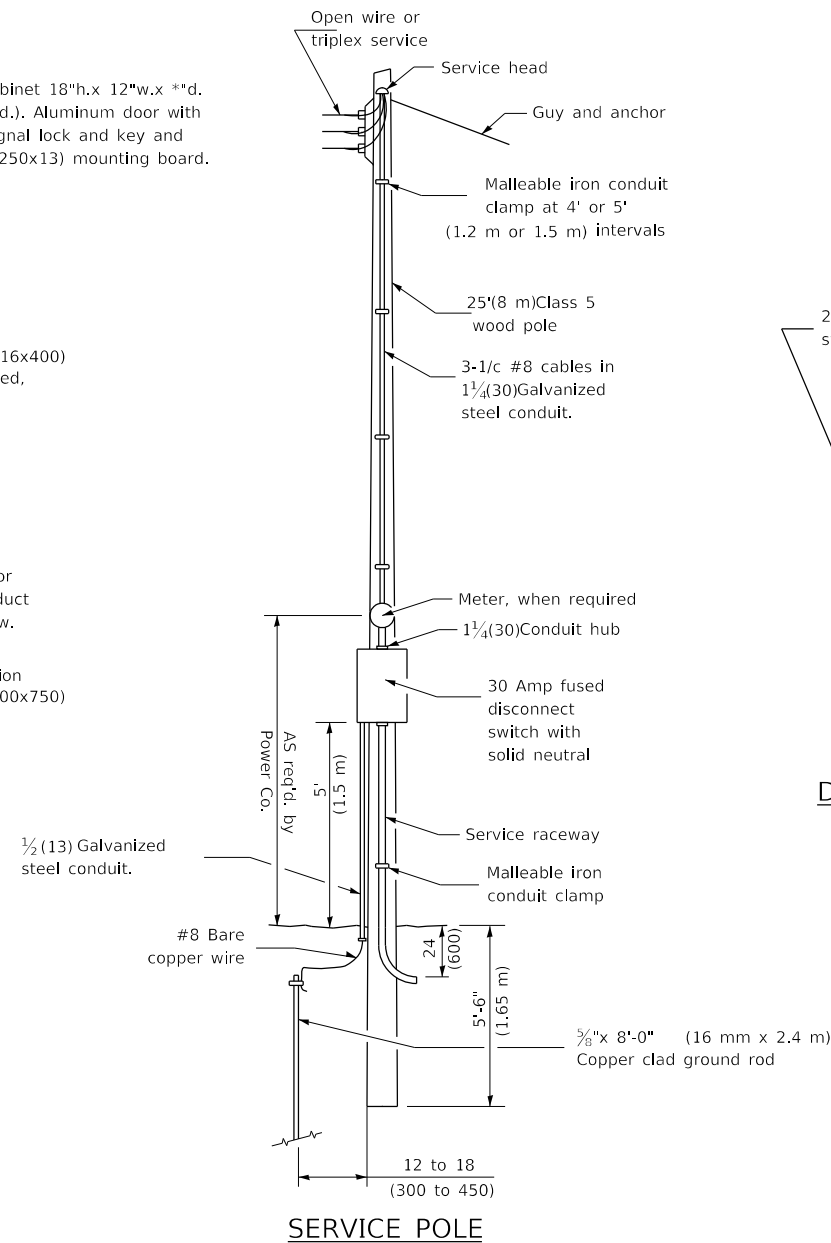
F.A.S. RTE.	SECTION	COUNTY	TOTAL SHEETS	SHEET NO.
630	18-00073-03-5P	SANGAMON	5	4
CONTRACT NO. 93771				
ILLINOIS FED. AID PROJECT				



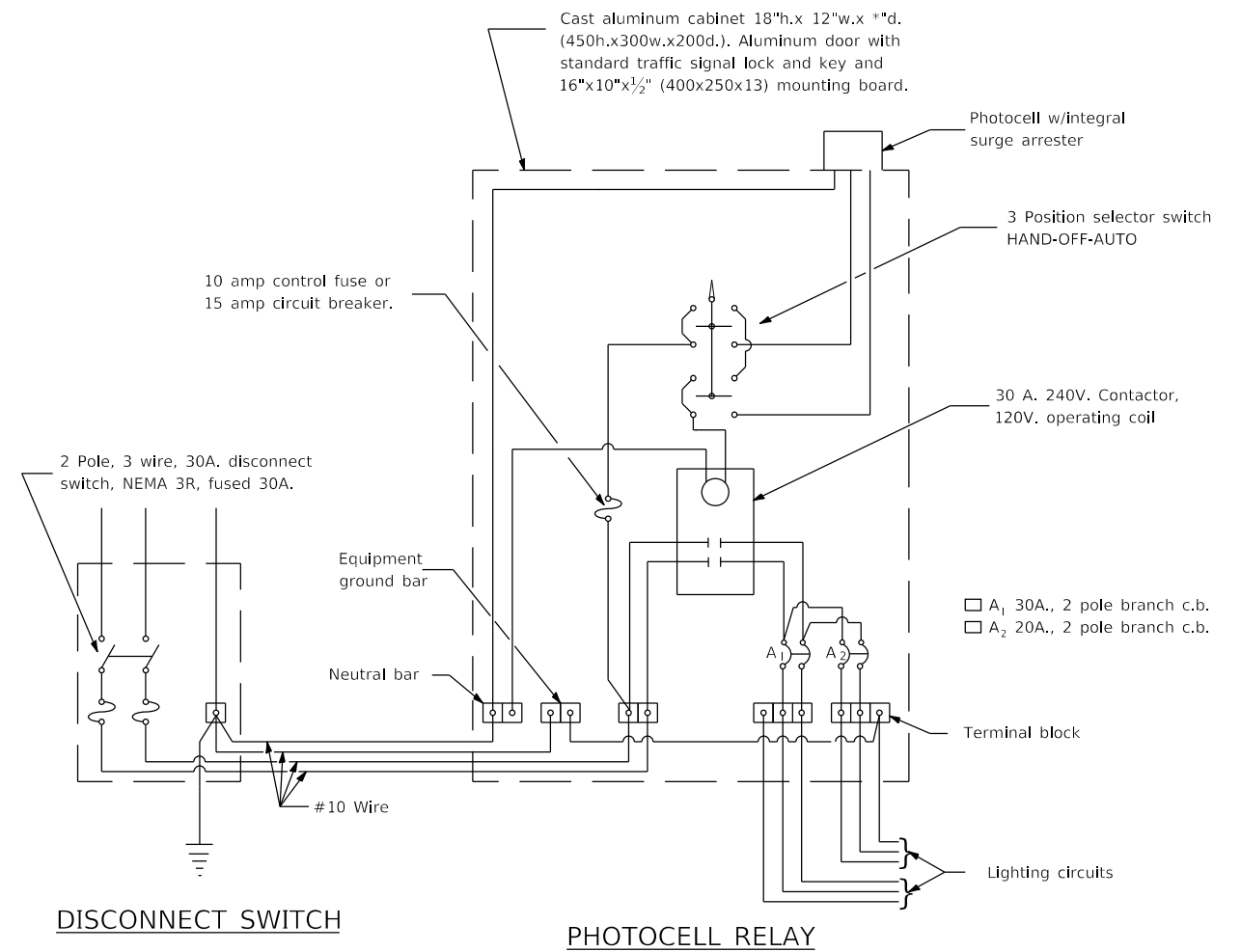
FRONT VIEW



CONTROLLER INSTALLATION



SERVICE POLE



GENERAL NOTES

All equipment shall be U.L. Listed.
All dimensions are in inches (millimeters) unless otherwise shown.

MODEL: Default
FILE NAME: E:\Sungam\c030002300_000\Draw\Roadway\CADD_Sheets...

USER NAME = Matt Overbey	DESIGNED - JRV	REVISED -
	DRAWN - MJO	REVISED -
PLOT SCALE = 20.0000 "/in.	CHECKED - JRV	REVISED -
PLOT DATE = 4/13/2021 - 10:52:46 AM	DATE - APRIL 2021	REVISED -

STATE OF ILLINOIS
DEPARTMENT OF TRANSPORTATION

SERVICE INSTALLATION AND LIGHTING CONTROLLER DETAIL

120/240V., 1 PHASE, 3 WIRE SERVICE

SCALE: N/A SHEET OF SHEETS STA. TO STA.

F.A.S. RTE.	SECTION	COUNTY	TOTAL SHEETS	SHEET NO.
630	18-00073-03-5P	SANGAMON	5	5
CONTRACT NO. 93771				
ILLINOIS FED. AID PROJECT				