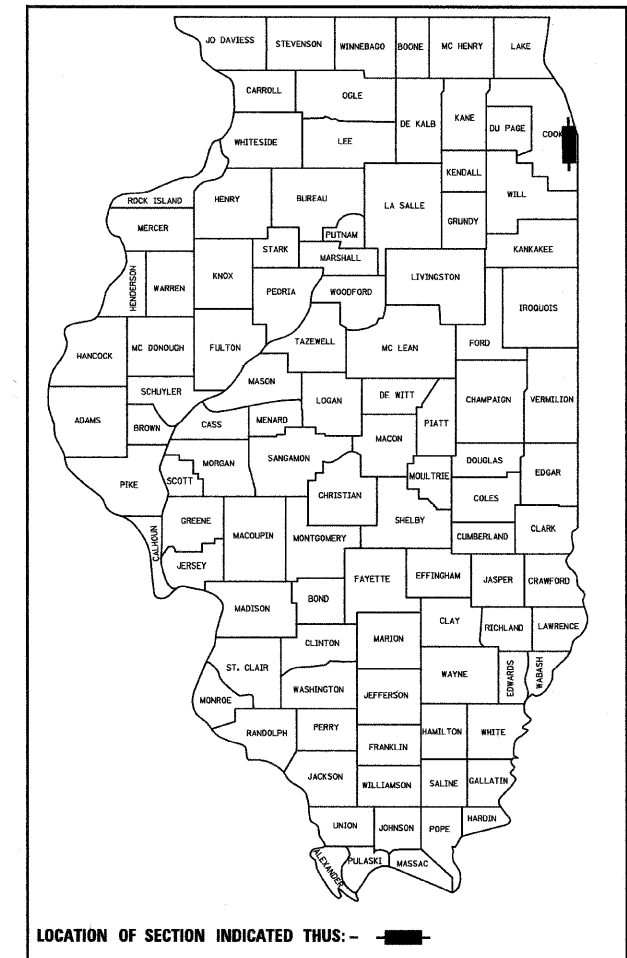


**STATE OF ILLINOIS
DEPARTMENT OF TRANSPORTATION
DIVISION OF HIGHWAYS**

**PLANS FOR PROPOSED
FEDERAL AID HIGHWAY**

**F.A.I. ROUTE 94 (DAN RYAN EXPRESSWAY)
SECTION 2005-032 I
INSTALLATION OF FENCING AND GATING ALONG
WENTWORTH AVENUE AND WELLS STREET FROM
375- FEET SOUTH OF 63rd STREET TO 47th STREET
COOK COUNTY
C-91-261-05**



INDEX OF SHEETS

SHEET DESCRIPTION

- 1 COVER SHEET, INDEX OF SHEETS, LIST OF ILLINOIS DOT HIGHWAY STANDARDS
- 2 GENERAL NOTES AND PROJECT COMMITMENTS
- 3 SUMMARY OF QUANTITIES
- 4-12 ALIGNMENT PLANS, SURVEY TIES AND CONTROL POINTS
- 13-25 EXISTING AND PROPOSED ROADWAY PLANS
- 26-32 STRUCTURAL DETAILS
- 33 ELECTRICAL DETAIL
- 34 TC-10 DISTRICT 1, TRAFFIC CONTROL & PROTECTION FOR SIDE ROADS, INTERSECTIONS AND DRIVEWAYS
- 35 TC-17 DISTRICT 1, TRAFFIC CONTROL FOR SHOULDER CLOSURES AND PARTIAL RAMP CLOSURES
- 36 TC-18 DISTRICT 1, SIGNING FOR FLAGGING OPERATIONS AT WORK ZONE OPENINGS
- 37 TC-22 DISTRICT 1, ARTERIAL ROAD INFORMATION SIGN

DESIGN NUMBER

D-91-261-05

IDOT HIGHWAY STANDARDS

STANDARD DESCRIPTION

- 000001-05 STANDARD SYMBOLS, ABBREVIATIONS, AND PATTERNS
- 001001-02 AREAS OF REINFORCEMENT BARS
- 001006 DECIMAL OF AN INCH AND OF A FOOT
- 664001-02 CHAIN LINK FENCE
- 701601-06 URBAN LANE CLOSURE, MULTILANE, 1W OR 2W WITH NONTRAVERSABLE MEDIAN
- 701701-06 URBAN LANE CLOSURE, MULTILANE INTERSECTION
- 701801-04 LANE CLOSURE MULTILANE 1W OR 2W CROSSWALK OR SIDEWALK CLOSURE
- 701901-01 TRAFFIC CONTROL DEVICES

PROJECT LOCATED IN CITY OF CHICAGO

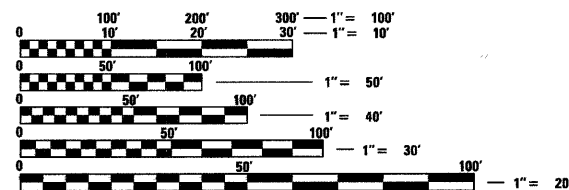
DESIGN DESIGNATION

WENTWORTH AVE: 6259 (20) URBAN COLLECTOR
WELLS ST: 8275 (20) URBAN COLLECTOR

ADT	DESIGN POSTED (2020) SPEED	DESIGN (2020) SPEED
11,000	30	25
15,000	30	25

FRONTAGE ROADS:

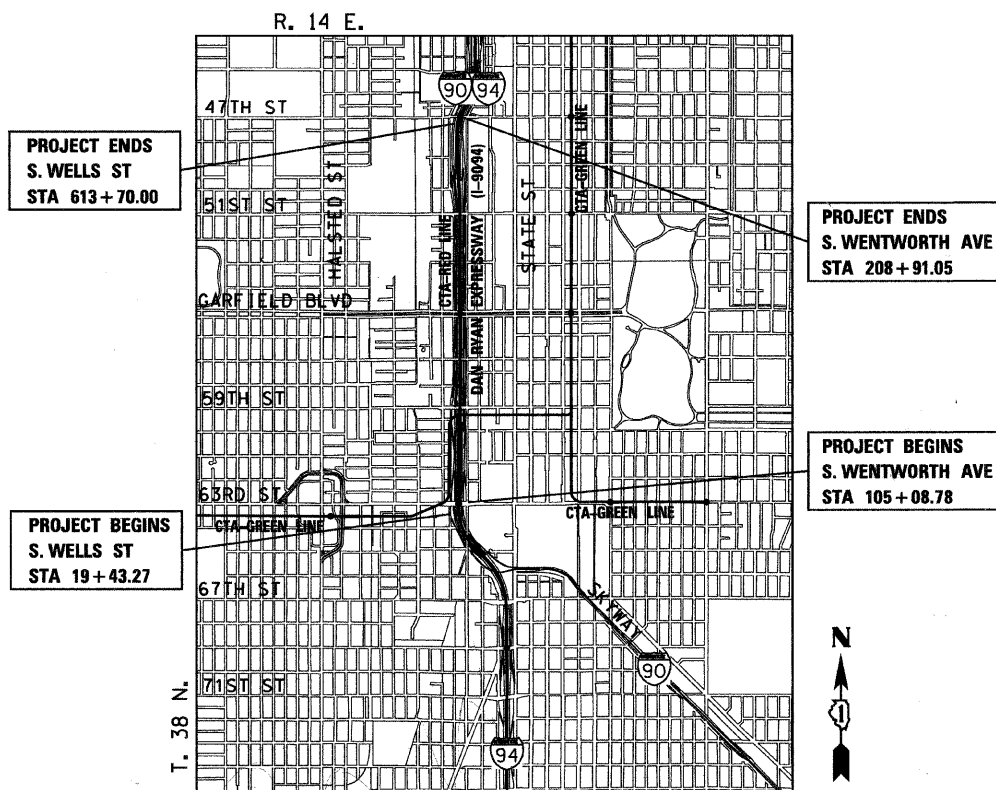
WENTWORTH AVE	11,000	30	25
WELLS ST	15,000	30	25



FULL SIZE PLANS HAVE BEEN PREPARED USING STANDARD ENGINEERING SCALES. REDUCED SIZED PLANS WILL NOT CONFORM TO STANDARD SCALES. IN MAKING MEASUREMENTS ON REDUCED PLANS, THE ABOVE SCALES MAY BE USED.

DIGGER:
CHICAGO UTILITY ALERT NETWORK
(312) 744-7000

CONTRACT NO. 60A03



LOCATION MAP

GROSS LENGTH OF PROJECT = 21,349 FT (4.043 MILES)
NET LENGTH OF PROJECT = 21,349 FT (4.043 MILES)



ROBERT M. GOVEIA
11/30/2009 EXPIRES
01/02/2009 DATE

STATE OF ILLINOIS
DEPARTMENT OF TRANSPORTATION
DIVISION OF HIGHWAYS

SUBMITTED: JANUARY 8, 2009

Diane M. O'Keefe
DEPUTY DIRECTOR OF HIGHWAYS, REGION ENGINEER

June 26, 2009
Charles G. Ingersoll
ENGINEER OF DESIGN AND ENVIRONMENT

June 26, 2009
Christine M. Reed
DIRECTOR OF HIGHWAYS, CHIEF ENGINEER

**PRINTED BY THE AUTHORITY
OF THE STATE OF ILLINOIS**



DISTRICT ONE DESIGNCONSULTANT SERVICES PROJECT MANAGER
RAJENDRA SHAH (847) 705-4555