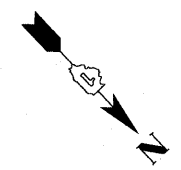


F.A.I. RTE.	SECTION	COUNTY	TOTAL SHEETS	SHEET NO.
90/94	2005-032 I	COOK	37	4
STA.		TO STA.		
FED. ROAD DIST. NO. 1		ILLINOIS FED. AID PROJECT		
60A03				



CURVE EKWELLO1
P.I. STA= 9+04.39
N= 1,861,874.35
E= 1,176,076.45
Δ= 10° 52' 16"
D= 5° 40' 05"
R= 1,010.83'
T= 96.18'
L= 191.79'
E= 4.56'
e= N/A
T.R.= N/A
S.E. RUN= N/A
P.C. STA= 8+08.21
N= 1,861,778.19
E= 1,176,078.94
P.T. STA= 10+00.00
N= 1,861,968.30
E= 1,176,055.87

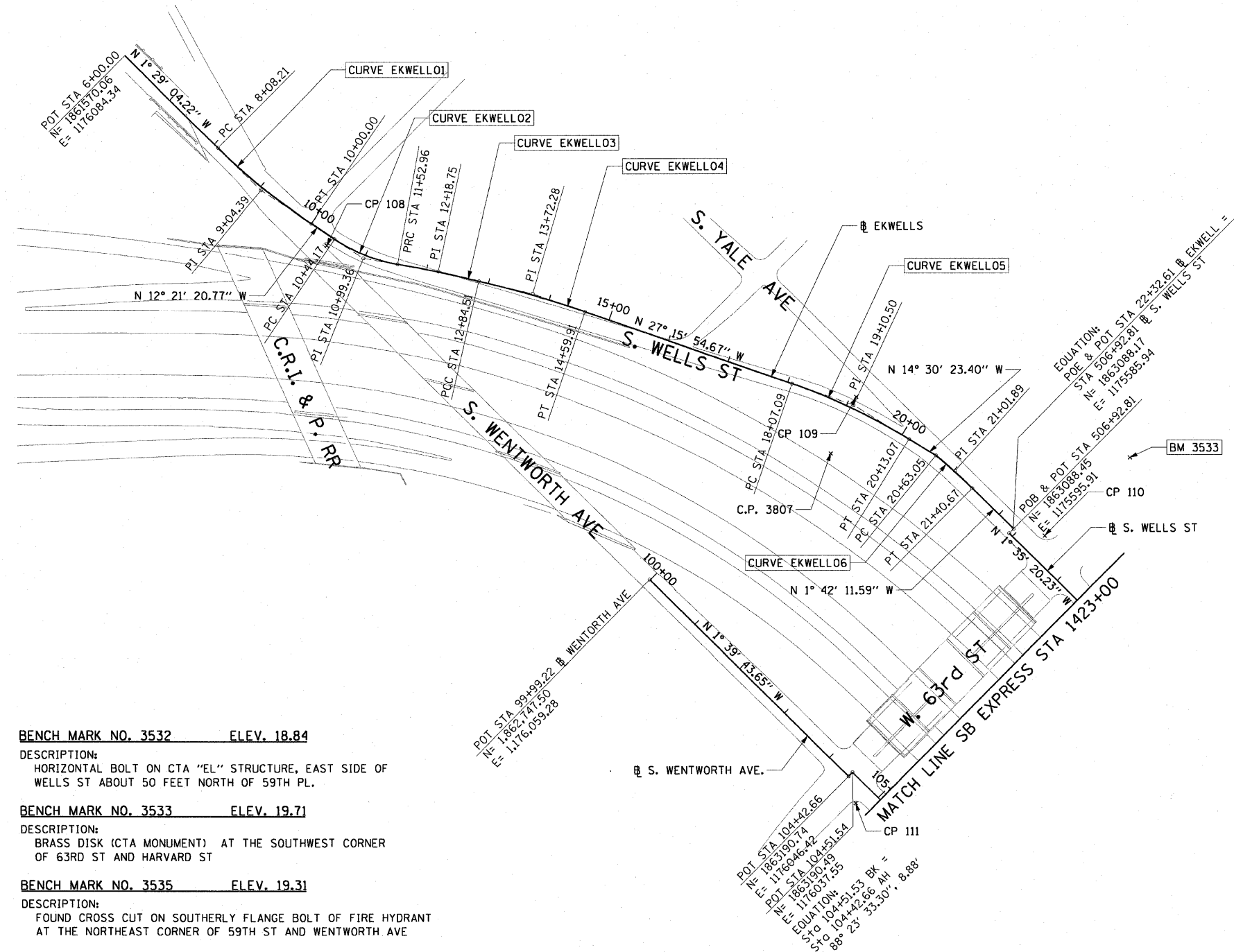
CURVE EKWELLO2
P.I. STA= 10+99.36
N= 1,862,065.35
E= 1,176,034.61
Δ= 23° 41' 58"
D= 21° 47' 07"
R= 263.00'
T= 55.18'
L= 108.78'
E= 4.56'
e= N/A
T.R.= N/A
S.E. RUN= N/A
P.C. STA= 10+44.17
N= 1,862,011.45
E= 1,176,002.13
P.T. STA= 11+52.96
N= 1,862,109.97
E= 1,176,002.13

CURVE EKWELLO3
P.I. STA= 12+18.75
N= 1,862,163.15
E= 1,175,963.41
Δ= 2° 58' 46"
D= 2° 15' 54"
R= 2,529.60'
T= 65.78'
L= 131.54'
E= 0.85'
e= N/A
T.R.= N/A
S.E. RUN= N/A
P.C. STA= 11+52.96
N= 1,862,109.97
E= 1,176,002.13
P.T. STA= 12+84.51
N= 1,862,218.28
E= 1,175,927.50

CURVE EKWELLO4
P.I. STA= 13+72.28
N= 1,862,291.83
E= 1,175,879.60
Δ= 5° 48' 38"
D= 3° 18' 45"
R= 1,729.58'
T= 87.77'
L= 175.40'
E= 2.22'
e= N/A
T.R.= N/A
S.E. RUN= N/A
P.C. STA= 12+84.51
N= 1,862,218.28
E= 1,175,927.50
P.T. STA= 14+59.61
N= 1,862,369.86
E= 1,175,839.39

CURVE EKWELLO5
P.I. STA= 19+10.50
N= 1,862,770.39
E= 1,175,632.97
Δ= 12° 45' 31"
D= 6° 11' 38"
R= 925.00'
T= 103.41'
L= 205.97'
E= 5.76'
e= N/A
T.R.= N/A
S.E. RUN= N/A
P.C. STA= 18+07.09
N= 1,862,678.46
E= 1,175,680.34
P.T. STA= 20+13.07
N= 1,862,870.51
E= 1,175,607.06

CURVE EKWELLO6
P.I. STA= 21+01.89
N= 1,862,957.45
E= 1,175,589.82
Δ= 5° 16' 59"
D= 6° 48' 23"
R= 841.78'
T= 38.83'
L= 77.62'
E= 0.89'
e= N/A
T.R.= N/A
S.E. RUN= N/A
P.C. STA= 20+63.05
N= 1,862,918.90
E= 1,175,594.54
P.T. STA= 21+40.67
N= 1,862,996.27
E= 1,175,588.66



- BENCH MARK NO. 3528** ELEV. 16.20
DESCRIPTION:
CROSS CUT ON NORTHWESTERLY BOLT OF FIRE HYDRANT
AT THE NORTHWEST CORNER OF 45TH ST AND WENTWORTH AVE
- BENCH MARK NO. 3530** ELEV. 18.18
DESCRIPTION:
CROSS CUT ON SOUTHEAST BOLT OF LIGHT POLE BASE
AT THE NORTHWEST CORNER OF 51ST ST AND WELLS ST
- BENCH MARK NO. 3531** ELEV. 17.55
DESCRIPTION:
CROSS CUT ON NORTHEASTERLY FLANGE BOLT OF FIRE HYDRANT
AT THE NORTHEAST CORNER OF GARFIELD BLVD AND WELLS ST

- BENCH MARK NO. 3532** ELEV. 18.84
DESCRIPTION:
HORIZONTAL BOLT ON CTA "EL" STRUCTURE, EAST SIDE OF
WELLS ST ABOUT 50 FEET NORTH OF 59TH PL.
- BENCH MARK NO. 3533** ELEV. 19.71
DESCRIPTION:
BRASS DISK (CTA MONUMENT) AT THE SOUTHWEST CORNER
OF 63RD ST AND HARVARD ST

- BENCH MARK NO. 3535** ELEV. 19.31
DESCRIPTION:
FOUND CROSS CUT ON SOUTHERLY FLANGE BOLT OF FIRE HYDRANT
AT THE NORTHEAST CORNER OF 59TH ST AND WENTWORTH AVE
- BENCH MARK NO. 3536** ELEV. 18.37
DESCRIPTION:
CROSS CUT ON SOUTHEASTERLY FLANGE BOLT OF FIRE HYDRANT
AT THE SOUTHEAST CORNER OF GARFIELD BLVD AND WENTWORTH AVE
- BENCH MARK NO. 3537** ELEV. 17.71
DESCRIPTION:
CROSS CUT ON NORTHEASTERLY FLANGE BOLT OF FIRE HYDRANT
AT THE NORTHEAST CORNER OF 51ST ST AND WENTWORTH AVE

- BENCH MARK NO. 3538** ELEV. 17.31
DESCRIPTION:
CROSS CUT ON EASTERLY FLANGE BOLT OF FIRE HYDRANT
AT THE NORTHEAST CORNER OF 47TH ST AND LASALLE ST

NOTES:
1. AVERAGE GRID TO GROUND CONVERSION FACTOR = 1.000010988654360

REVISIONS	
NAME	DATE

ILLINOIS DEPARTMENT OF TRANSPORTATION
F.A.I. 90/94 (DAN RYAN EXPRESSWAY)
71ST ST TO 47TH ST (NB & SB FENCE AND GATES)

ALIGNMENT PLAN

SCALE: 1"=100'
DATE: JANUARY 14, 2009

DRAWN BY: NJH
CHECKED BY: RMG



12-3406 FH
7/13/2009
U:\scg\p207\p40166\p40465\dwg\128-free-wall_fence.spl\contract_3531\35001.dwg