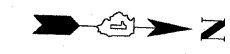


| F.A.I. RTE.           | SECTION    | COUNTY                    | TOTAL SHEETS | SHEET NO. |
|-----------------------|------------|---------------------------|--------------|-----------|
| 90/94                 | 2005-032 I | COOK                      | 37           | 6         |
| STA.                  |            | TO STA.                   |              |           |
| FED. ROAD DIST. NO. 1 |            | ILLINOIS FED. AID PROJECT |              |           |

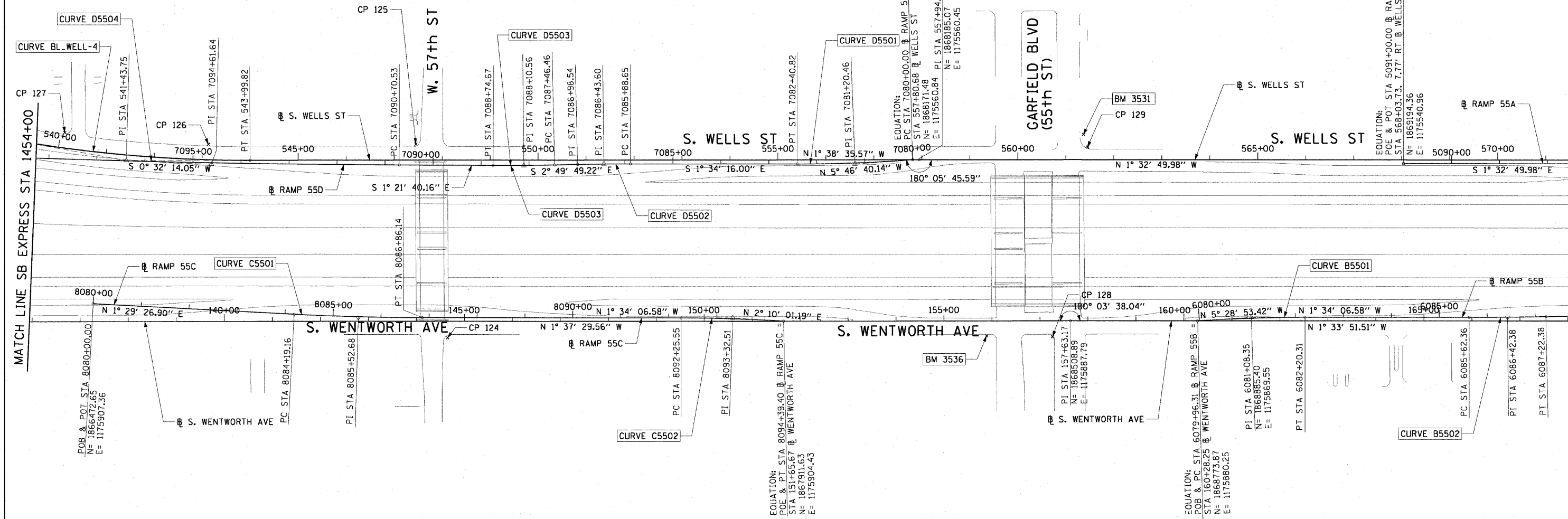
60A03



**CURVE BL\_WELL-4**  
P.I. STA= 541+43.75  
N= 1,866,533.81  
E= 1,175,607.82  
Δ= 10° 22' 57"  
D= 2° 01' 18"  
R= 2834.00'  
T= 257.48'  
L= 513.55'  
E= 11.67'  
e= N/A  
T.R.= N/A  
S.E. RUN= N/A  
P.C. STA= 538+86.27  
N= 1,866,279.32  
E= 1,175,568.70  
P.T. STA= 543+99.82  
N= 1,866,791.18  
E= 1,175,600.44

**CURVE B5501**  
P.I. STA= 6081+08.35  
N= 1,868,885.40  
E= 1,175,869.55  
Δ= 3° 54' 47"  
D= 1° 44' 49"  
R= 3280.00'  
T= 112.05'  
L= 224.01'  
E= 1.91'  
e= N/A  
T.R.= N/A  
S.E. RUN= N/A  
P.C. STA= 6079+96.31  
N= 1,868,773.87  
E= 1,175,880.25  
P.T. STA= 6082+20.31  
N= 1,868,997.41  
E= 1,175,866.48

**CURVE B5502**  
P.I. STA= 6086+42.38  
N= 1,869,419.31  
E= 1,175,854.93  
Δ= 1° 08' 45"  
D= 0° 42' 58"  
R= 8002.00'  
T= 80.01'  
L= 160.02'  
E= 0.40'  
e= N/A  
T.R.= N/A  
S.E. RUN= N/A  
P.C. STA= 6085+62.36  
N= 1,869,339.33  
E= 1,175,857.12  
P.T. STA= 6087+22.38  
N= 1,869,499.24  
E= 1,175,851.14



**CURVE C5501**  
P.I. STA= 8085+52.68  
N= 1,867,025.15  
E= 1,175,921.74  
Δ= 3° 03' 33"  
D= 1° 08' 45"  
R= 5000.00'  
T= 133.52'  
L= 266.97'  
E= 1.78'  
e= N/A  
T.R.= N/A  
S.E. RUN= N/A  
P.C. STA= 8084+19.16  
N= 1,866,891.67  
E= 1,175,918.26  
P.T. STA= 8086+86.14  
N= 1,867,158.61  
E= 1,175,918.08

**CURVE C5502**  
P.I. STA= 8093+32.51  
N= 1,867,804.75  
E= 1,175,900.39  
Δ= 3° 44' 08"  
D= 1° 44' 49"  
R= 3280.00'  
T= 106.96'  
L= 213.84'  
E= 1.74'  
e= N/A  
T.R.= N/A  
S.E. RUN= N/A  
P.C. STA= 8092+25.55  
N= 1,867,697.83  
E= 1,175,903.32  
P.T. STA= 8094+39.40  
N= 1,867,911.63  
E= 1,175,904.43

**CURVE D5501**  
P.I. STA= 7081+20.46  
N= 1,868,051.63  
E= 1,175,572.97  
Δ= 4° 12' 24"  
D= 1° 44' 49"  
R= 3280.00'  
T= 120.46'  
L= 240.82'  
E= 2.21'  
e= N/A  
T.R.= N/A  
S.E. RUN= N/A  
P.C. STA= 7080+00.00  
N= 1,868,171.48  
E= 1,175,560.84  
P.T. STA= 7082+40.82  
N= 1,867,931.21  
E= 1,175,576.27

**CURVE D5502**  
P.I. STA= 7086+43.60  
N= 1,867,528.58  
E= 1,175,587.31  
Δ= 1° 15' 33"  
D= 1° 08' 45"  
R= 5000.00'  
T= 54.95'  
L= 109.89'  
E= 0.30'  
e= N/A  
T.R.= N/A  
S.E. RUN= N/A  
P.C. STA= 7085+88.65  
N= 1,867,583.50  
E= 1,175,585.81  
P.T. STA= 7086+74.67  
N= 1,867,473.70  
E= 1,175,590.03

**CURVE D5503**  
P.I. STA= 7088+10.56  
N= 1,867,361.81  
E= 1,175,595.56  
Δ= 1° 28' 09"  
D= 1° 08' 45"  
R= 5000.00'  
T= 64.11'  
L= 128.21'  
E= 0.41'  
e= N/A  
T.R.= N/A  
S.E. RUN= N/A  
P.C. STA= 7087+46.66  
N= 1,867,425.84  
E= 1,175,592.39  
P.T. STA= 7088+10.56  
N= 1,867,297.72  
E= 1,175,597.08

**CURVE D5504**  
P.I. STA= 7094+61.64  
N= 1,866,710.92  
E= 1,175,611.02  
Δ= 1° 53' 54"  
D= 0° 14' 34"  
R= 23606.00'  
T= 391.11'  
L= 782.14'  
E= 3.24'  
e= N/A  
T.R.= N/A  
S.E. RUN= N/A  
P.C. STA= 7090+70.53  
N= 1,867,101.91  
E= 1,175,601.73  
P.T. STA= 7098+52.67  
N= 1,866,319.83  
E= 1,175,607.36

**NOTES:**  
1. AVERAGE GRID TO GROUND CONVERSION FACTOR = 1.000010988654360  
2. FOR BENCH MARK INFORMATION, SEE SHEET 1 OF ALIGNMENT PLAN SHEETS.

| REVISIONS |      |
|-----------|------|
| NAME      | DATE |
|           |      |
|           |      |
|           |      |
|           |      |
|           |      |

ILLINOIS DEPARTMENT OF TRANSPORTATION  
F.A.I. 90/94 (DAN RYAN EXPRESSWAY)  
71ST ST TO 47TH ST (NB & SB FENCE AND GATES)

**ALIGNMENT PLAN**

SCALE: 1"=100'  
DATE: JANUARY 14, 2009

DRAWN BY: NJH  
CHECKED BY: RMG

AECOM

1/13/2009 12:34:06 PM  
\\uschi01\p207\p40468\p40468\WIN28-knee\_wall\_fences\contract\_35\al353032.dwg