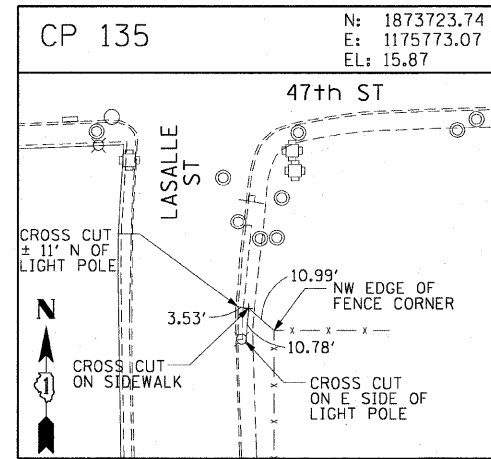
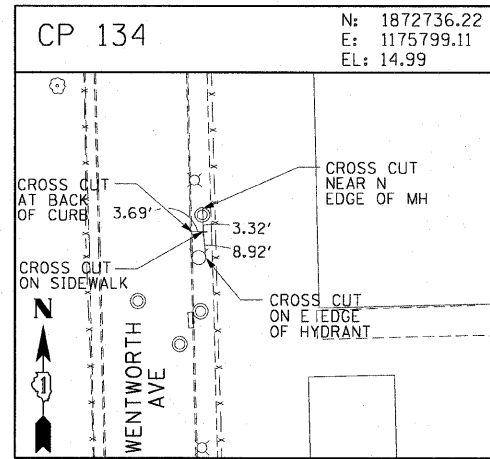
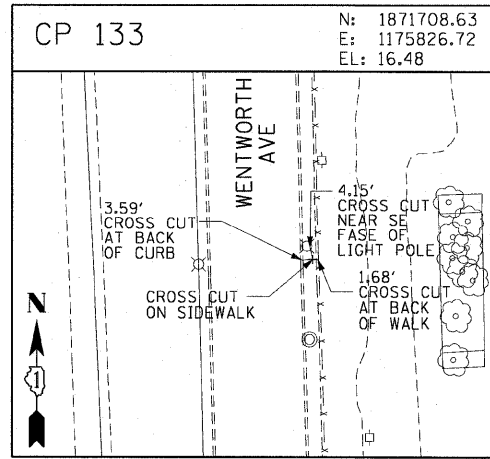
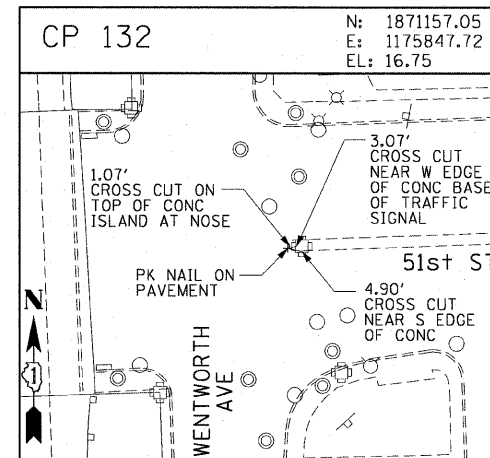
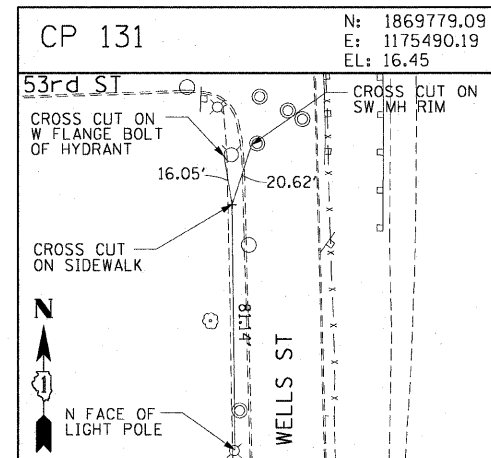
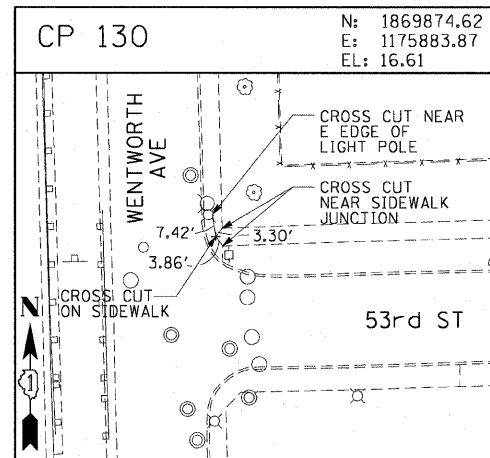
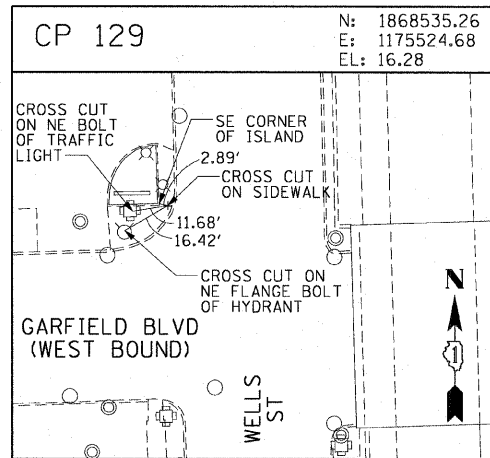
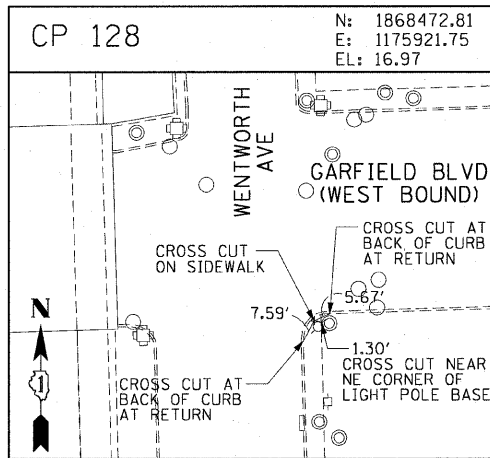
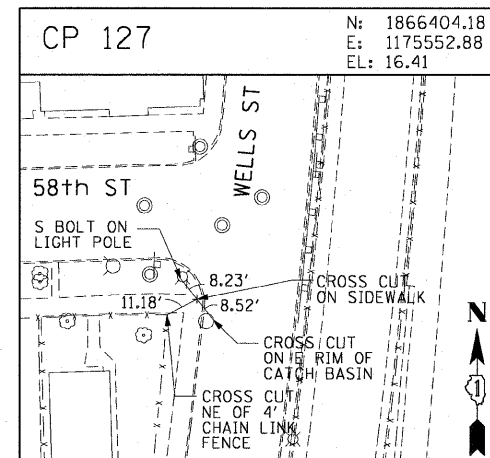
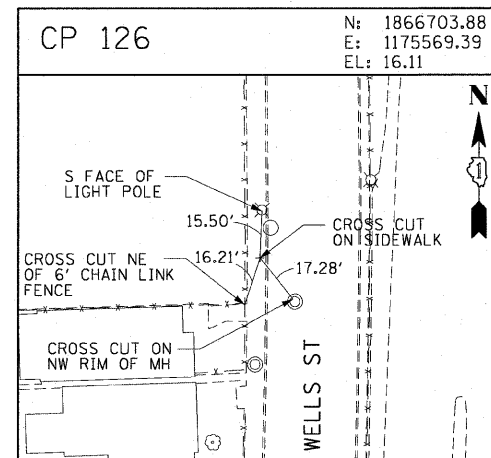
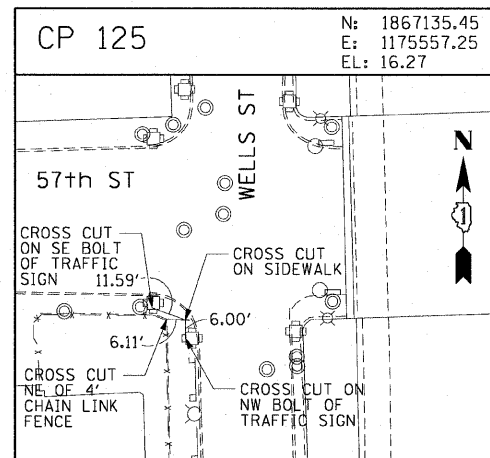
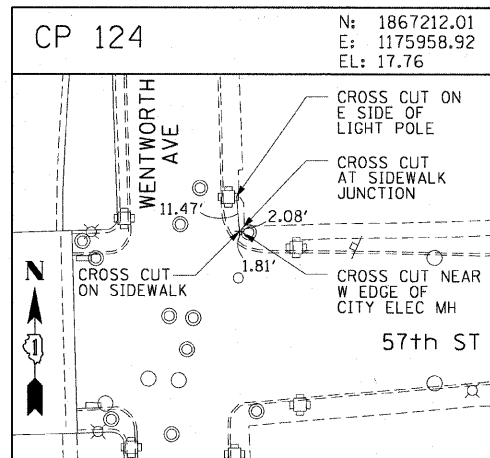
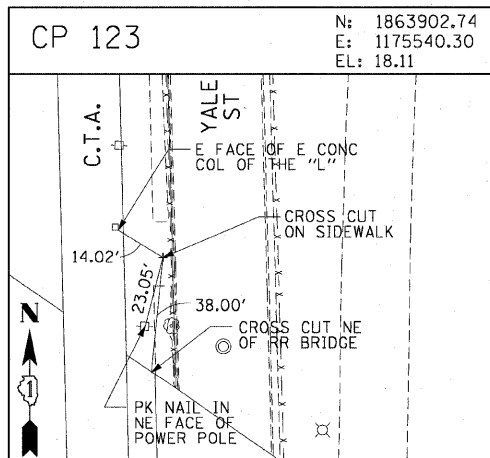
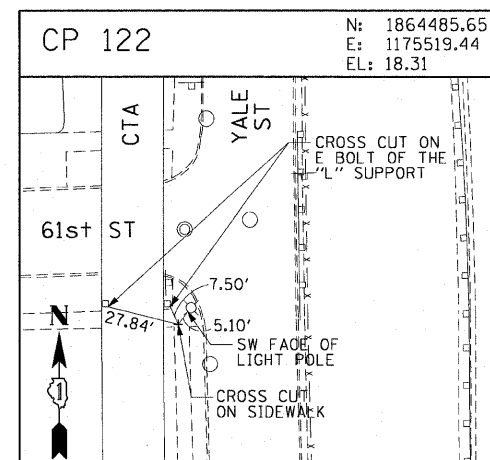
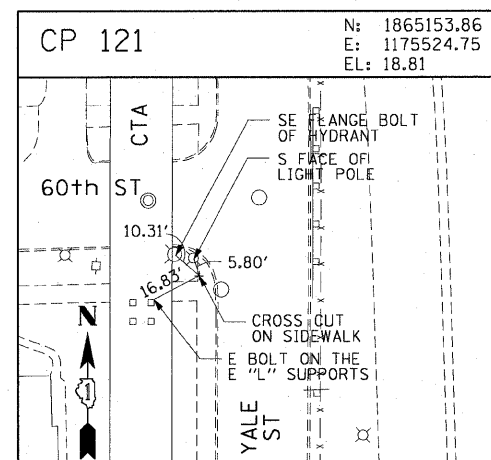
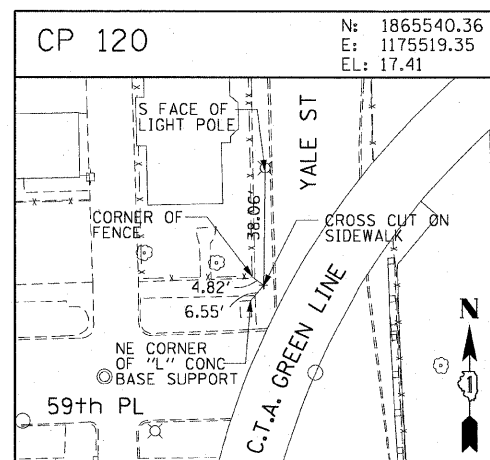
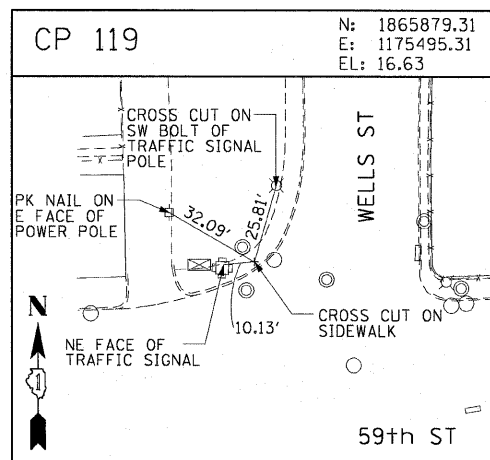
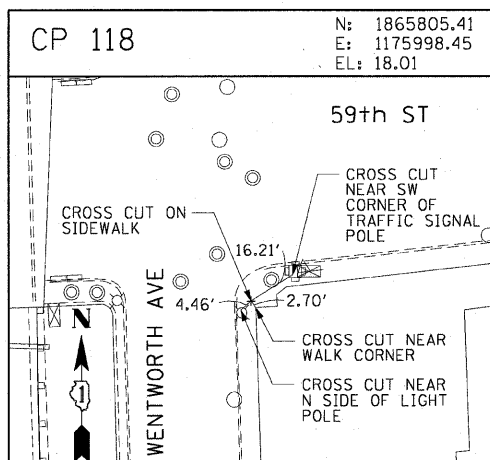


F.A.I. RTE.	SECTION	COUNTY	TOTAL SHEETS	SHEET NO.
90/94	2005-032 I	COOK	37	10
STA.		TO STA.		
FED. ROAD DIST. NO. 1		ILLINOIS FED. AID PROJECT		
60A03				



AECOM

REVISIONS	
NAME	DATE

ILLINOIS DEPARTMENT OF TRANSPORTATION  
F.A.I. 90/94 (DAN RYAN EXPRESSWAY)  
71ST ST TO 47TH ST (NB & SB FENCE AND GATES)

**SURVEY TIES AND CONTROL POINTS**

SCALE: 1"=30'  
DATE: JANUARY 14, 2009

DRAWN BY: MRK  
CHECKED BY: JAL

\\scg\p207\p40466\p40466.dwg\12-28-08\wall.fence\st\contract\_35\135022.st

12-31-11 PM

1/13/2009